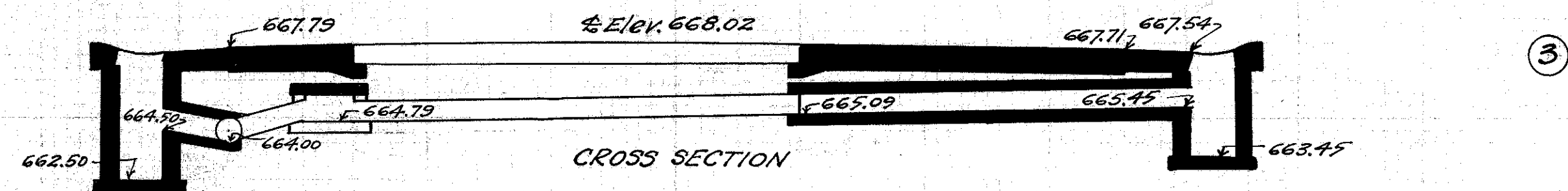
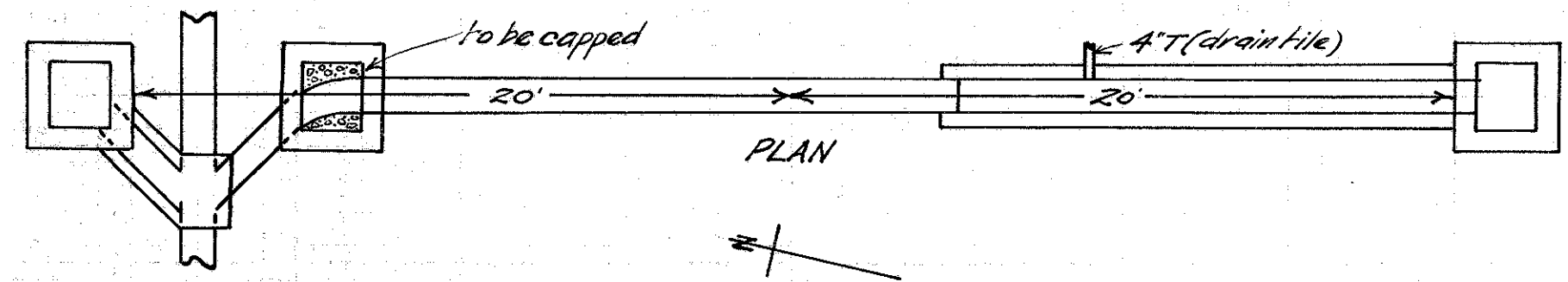


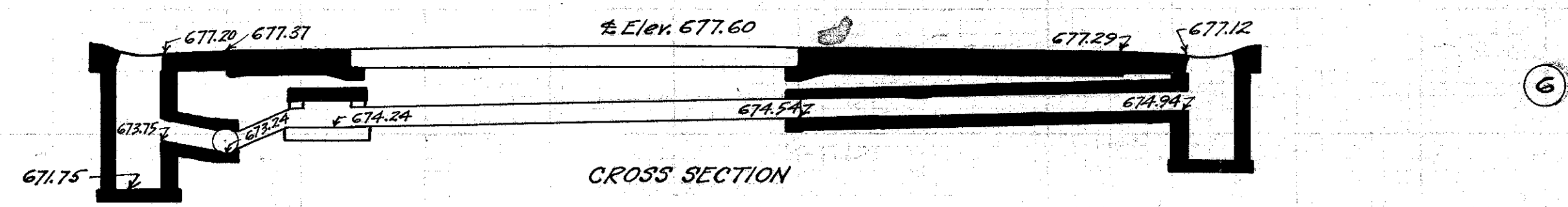
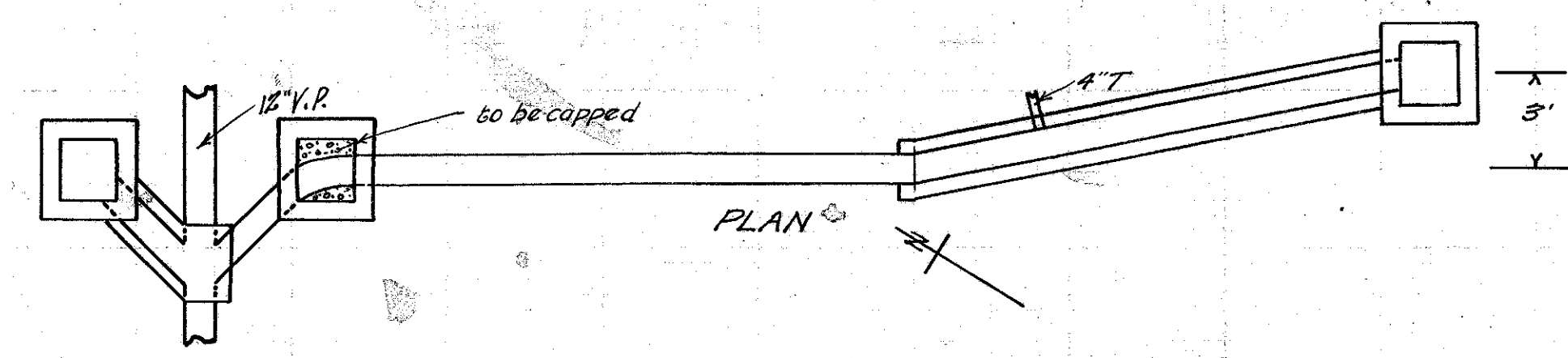
FED. RD. DIST. NO.	STATE	FED. AID PROJECT	FISCAL YEAR	24
10	OHIO	519-B	1928	30

S.H. (I.G.H.) No. 2 Sec. 12 & Mentor LAKE COUNTY.



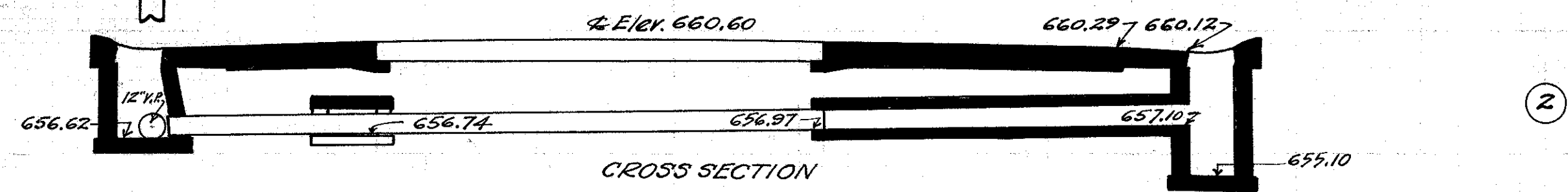
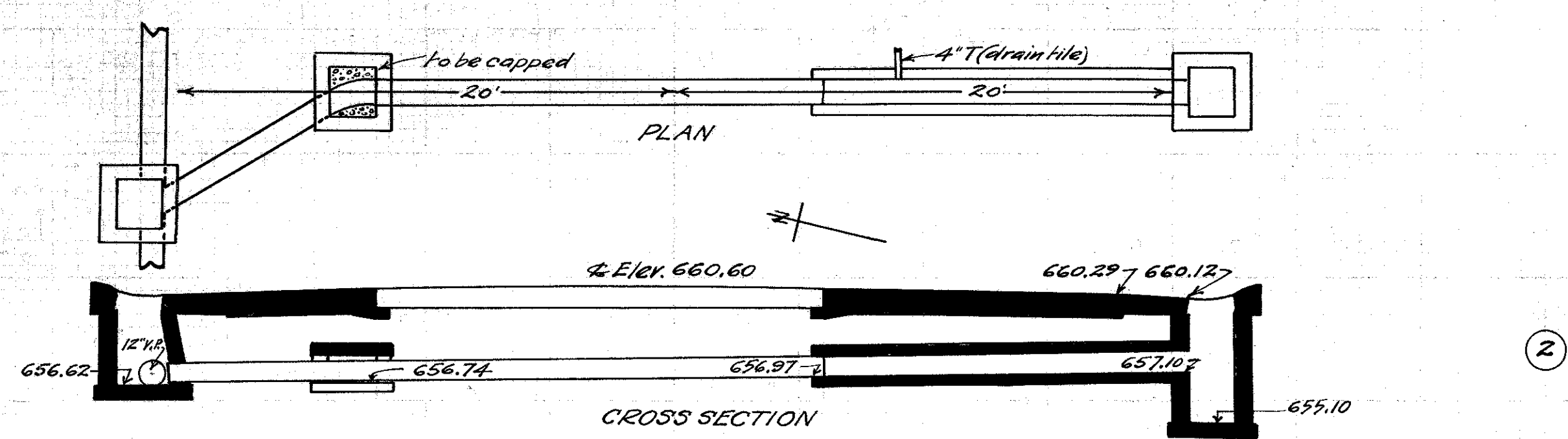
CULVERT DATA
 Type Std. V.S.P. culvert Dr. #300
 Size 10"x20'
 Work Req: Extend present culv. to R. with 10"x16" std. V.P. (enc.) culv. connect 4" drain tile 4" to R of present par. Build C.B. R. & L. on L. connect to present sewer with 10"x5" V.P. enc. Cap old I.B. on L.
 Drawn by Cumings & Plummer Checked by L.A. Bruen Div'n. Engr.
 Date 2/29/28 Date 3-12-28 Sfa. 9+01

EST. QUANTITIES
 Exc. 3.8 cu. yds.
 Conc. 1-8 1.92 cu. yds.
 Conc. 1-5 1/2 (precast cap) 0.2 cu. yds.
 Reinf. steel 22 lbs.
 10" V.P. 18 lin. ft.
 10"x4" T 1
 C.B. old covers reset 2



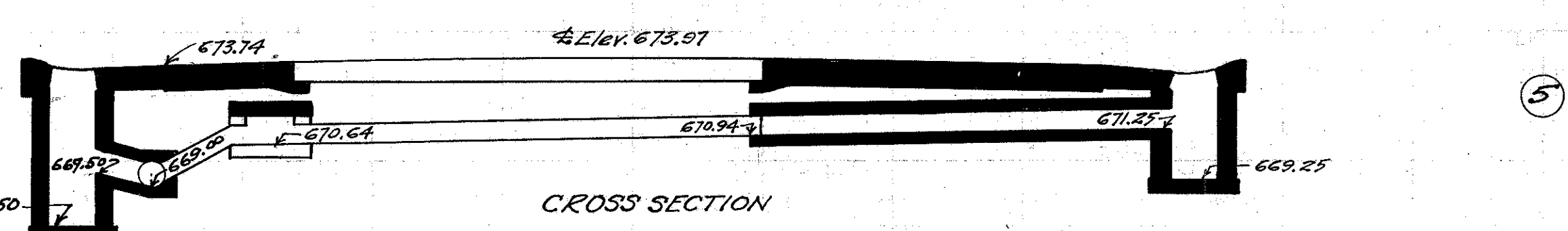
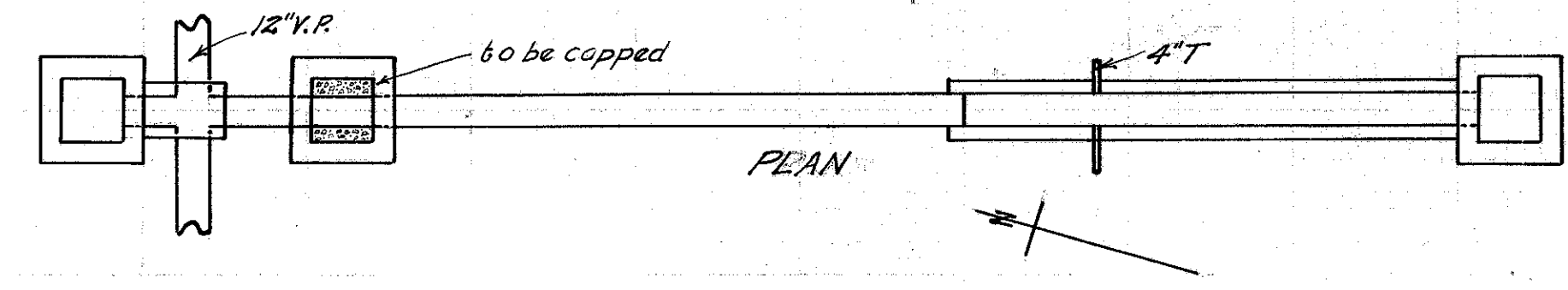
CULVERT DATA
 Type Std. V.S.P. culv. Dr. #300
 Size 10"x20'
 Work Req: Extend present culv. to R with 10"x16" std. V.P. enc. culv. connect 4" tile 4" to R of present par. Build C.B. on R & L. On L connect to present sewer 10"x4" V.P. enc. Cap old I.B. on L.
 Drawn by Cumings & Plummer Checked by L.A. Bruen Div'n. Engr.
 Date 2/29/28 Date 3-12-28 Sfa. 22+97

EST. QUANTITIES
 Exc. 3.8 cu. yds.
 Conc. 1-8 1.78 cu. yds.
 Conc. 1-5 1/2 (precast cap) 0.2 cu. yds.
 Reinf. steel 22 lbs.
 10" V.P. 18 lin. ft.
 10"x4" T 1
 C.B. (old covers reset) 2



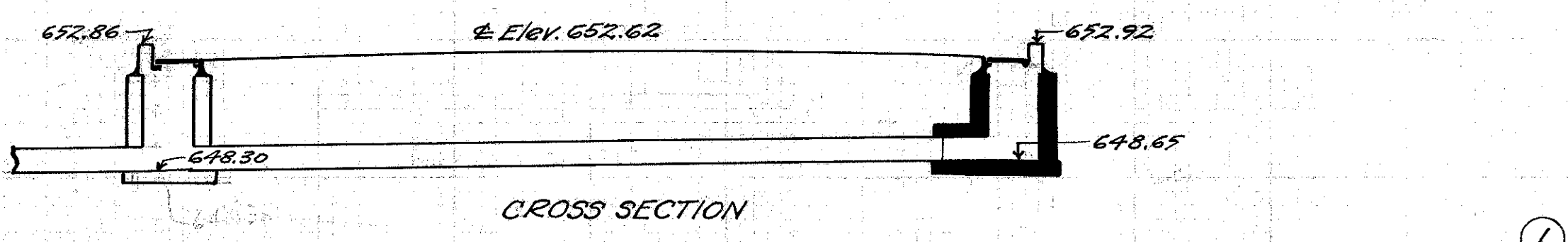
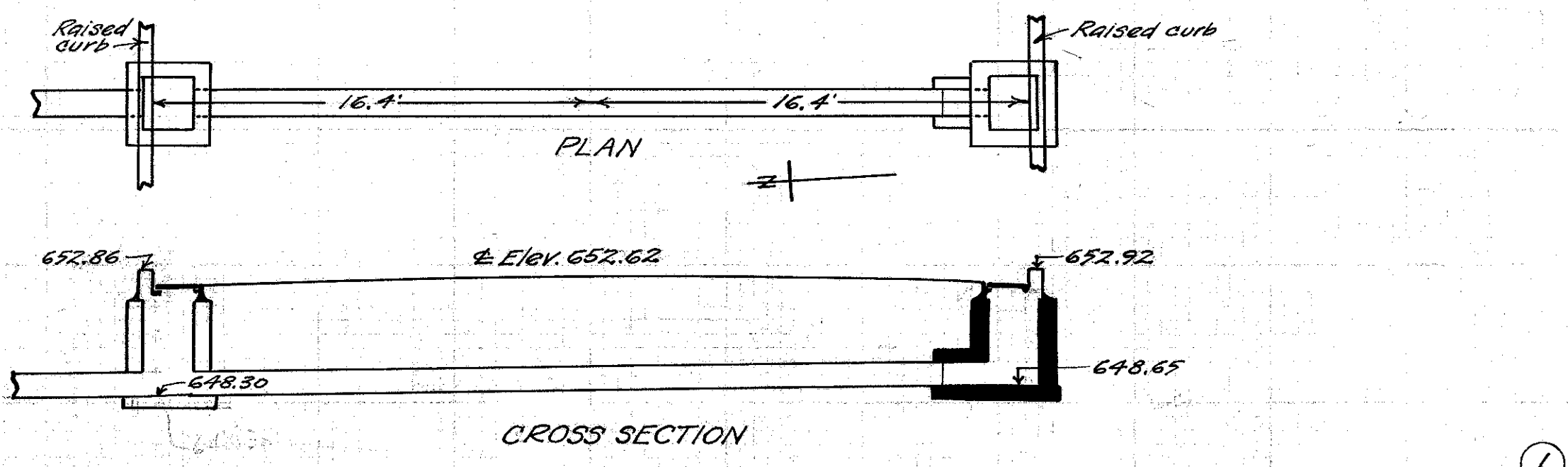
CULVERT DATA
 Type Std. V.S.P. culvert Dr. #300
 Size 10"x16'
 Work Req: Extend present culv. to R. with 10"x16" std. V.P. (enc.) culv. Make drain tile connection 4" to R of present par. I.B. on L. C.B. on R old castings reset cap old I.B. on L.
 Drawn by Cumings & Plummer Checked by L.A. Bruen Div'n. Engr.
 Date 2/29/28 Date 3-12-28 Sfa. 6+05

EST. QUANTITIES
 Exc. 4.9 cu. yds.
 Con. 1-8 1.57 cu. yds.
 Con. 1-5 1/2 (precast cap) 0.2 cu. yds.
 Reinf. steel 22 lbs.
 10" V.P. 14 lin. ft.
 10"x4" T 1
 I.B. 1
 C.B. 1 Sfa. 6+05



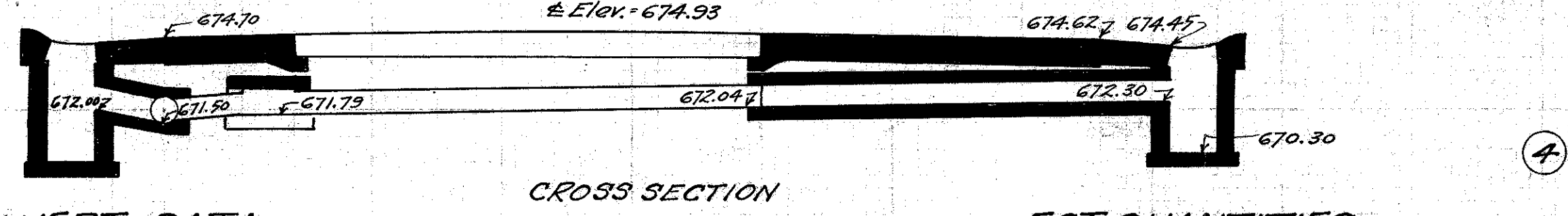
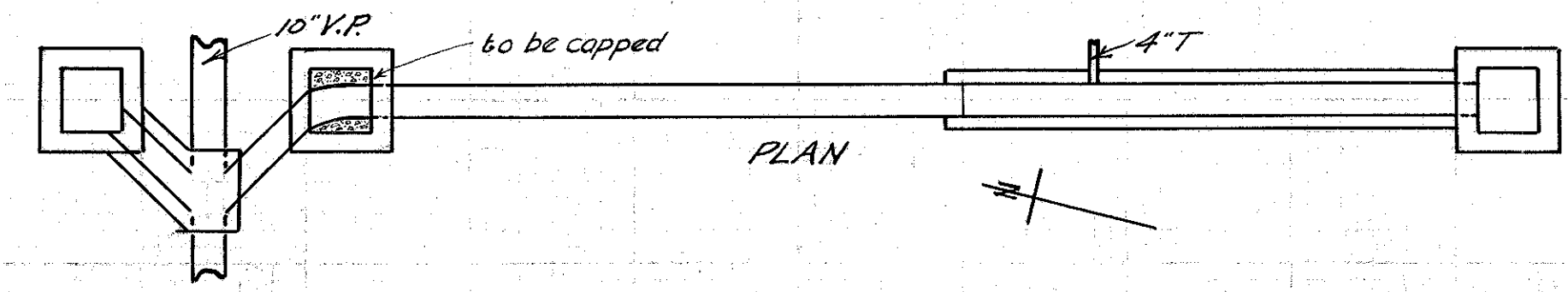
CULVERT DATA
 Type Std. V.S.P. culv. Dr. #300
 Size 10"x18'
 Work Req: Extend present culv. to R with 10"x16" std. V.P. enc. culv. connect 4" drain tile 4" to R of present par. Build C.B. R & L. On L connect to present sewer with 10"x4" V.P. enc. Cap old I.B. on L.
 Drawn by Cumings & Plummer Checked by L.A. Bruen Div'n. Engr.
 Date 2/29/28 Date 3-12-28 Sfa. 21+01

EST. QUANTITIES
 Exc. 3.8 cu. yds.
 Conc. 1-8 1.78 cu. yds.
 Conc. 1-5 1/2 (precast cap) 0.2 cu. yds.
 Reinf. steel 22 lbs.
 10" V.P. 16 lin. ft.
 10"x4" T (Double) 1
 C.B. (old covers reset) 2



CULVERT DATA
 Type Std. V.S.P. culvert Dr. #300
 Size 10"x2'
 Work Req: Build 10"x2" std. V.P. enc. culv. Build I.B. on R reset old casting connect with present culv.
 Drawn by Cumings & Plummer Checked by L.A. Bruen Div'n. Engr.
 Date 2/29/28 Date 3-12-28 Sfa. 2+04

EST. QUANTITIES
 Exc. 0.6 cu. yds.
 Conc. 1-8 0.14 cu. yds.
 10" V.P. 2 lin. ft.
 I.B. (reset old cover) 1



CULVERT DATA
 Type Std. V.S.P. culvert Dr. #300
 Size 10"x20'
 Work Req: Extend present culv. to R with 10"x16" std. V.P. enc. culv. connect 4" drain tile 4" to R of present par. Build C.B. R & L. On L connect to present sewer 10"x4" V.P. enc. Cap old I.B. on L.
 Drawn by Cumings & Plummer Checked by L.A. Bruen Div'n. Engr.
 Date 2/29/28 Date 3-12-28 Sfa. 12+01

EST. QUANTITIES
 Exc. 3.7 cu. yds.
 Conc. 1-8 1.78 cu. yds.
 Conc. 1-5 1/2 (precast cap) 0.2 cu. yds.
 Reinf. steel 22 lbs.
 10" V.P. 18 lin. ft.
 10"x4" T 1
 C.B. (old covers reset) 2