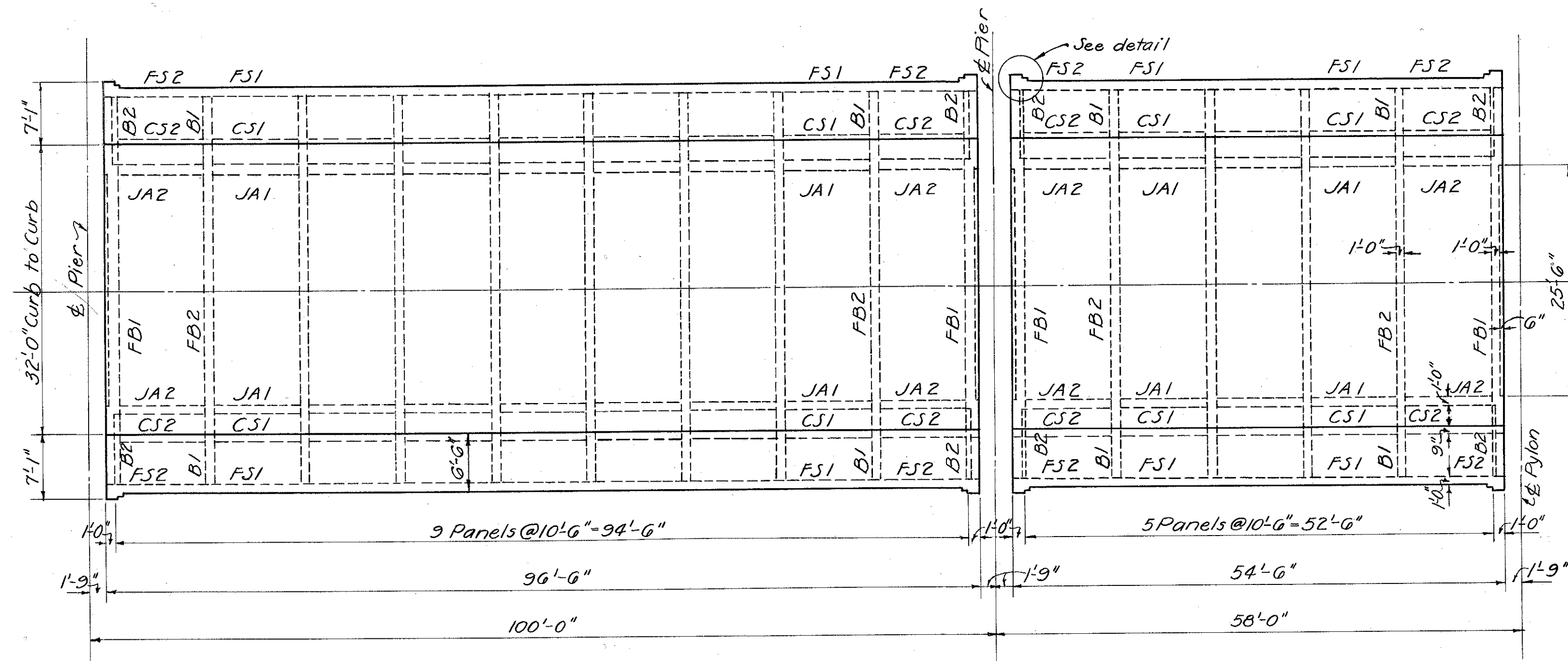
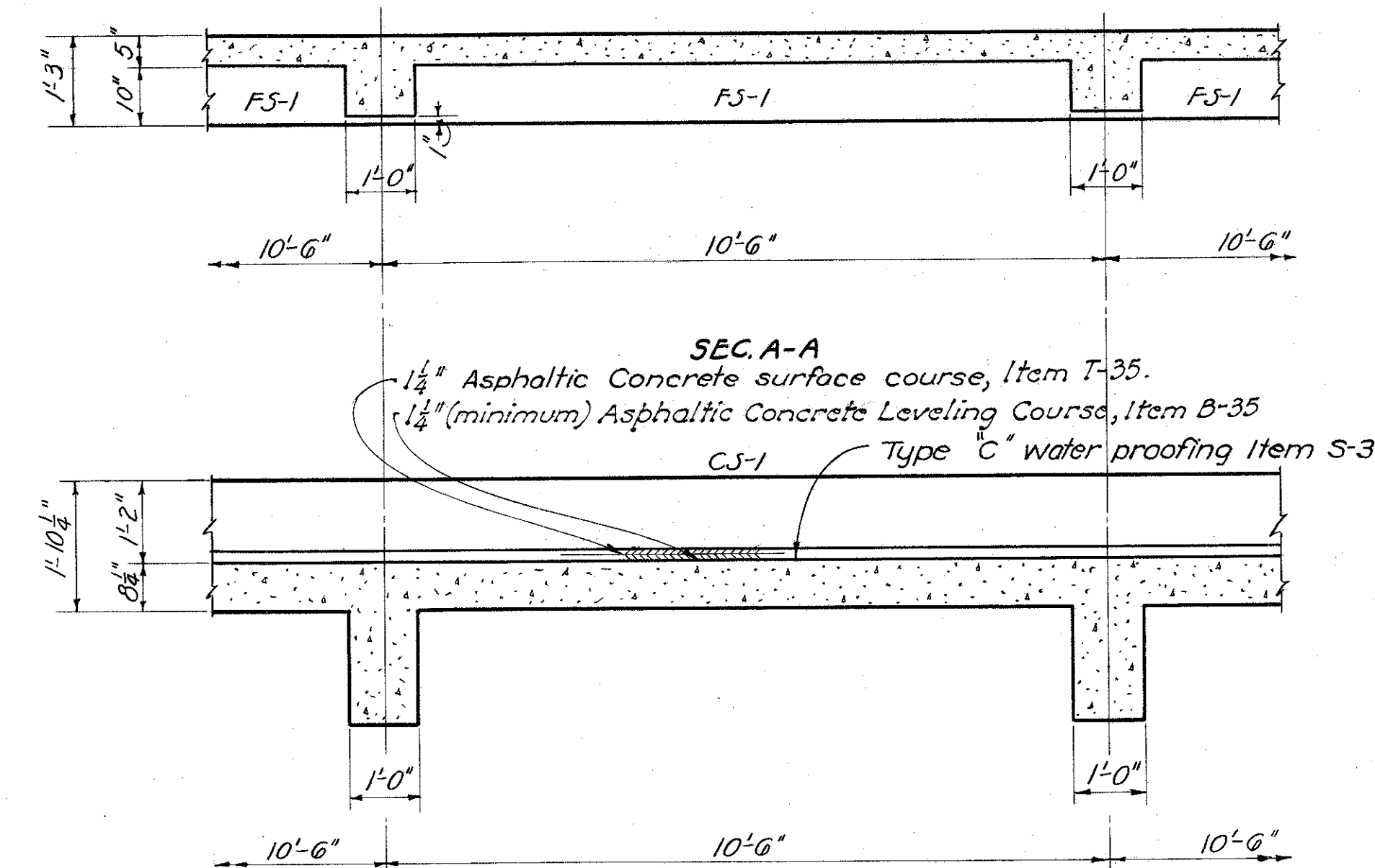
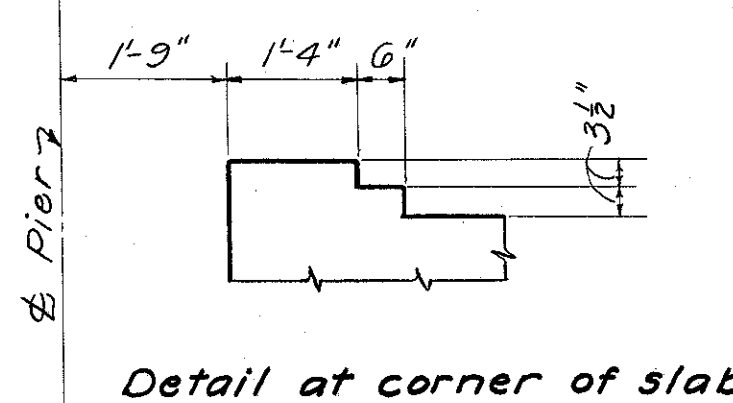


LAKE COUNTY
SEC. LAK-20-560



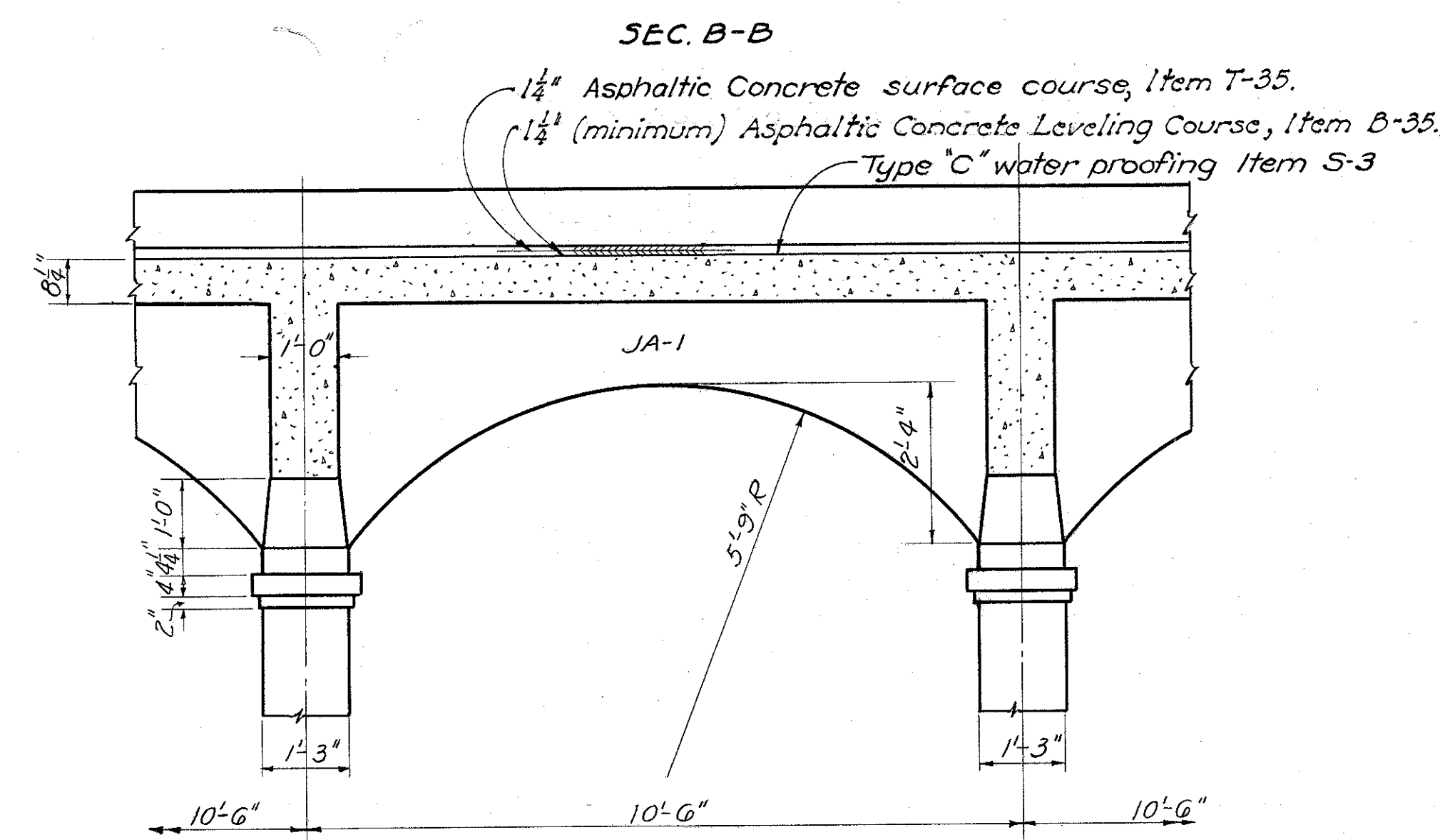
PLAN - TYPICAL FLOOR SLABS

Scale: $\frac{3}{32}'' = 1'-0''$



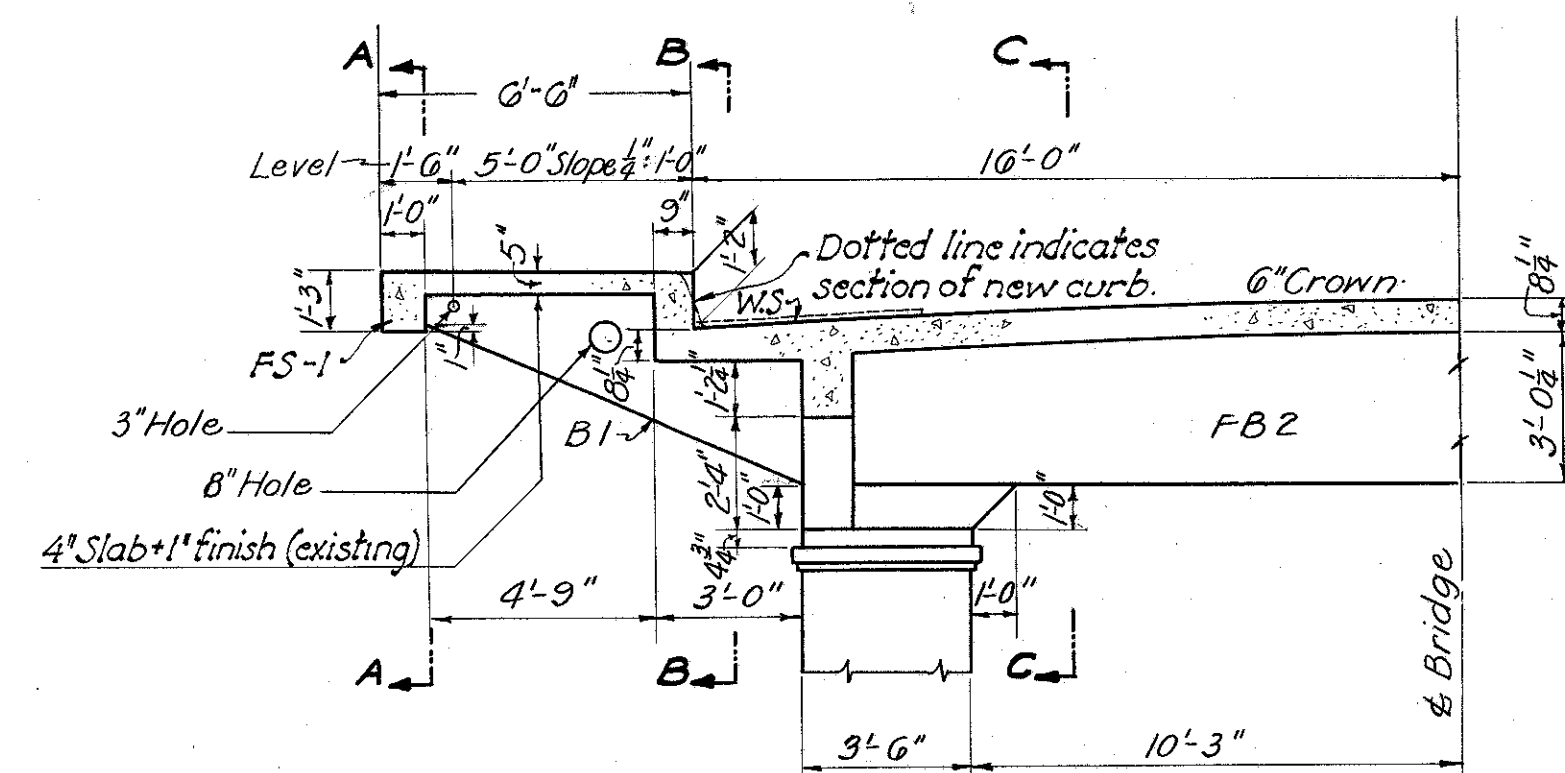
SEC. A-A

$\frac{1}{4}''$ Asphaltic Concrete surface course, Item T-35.
 $\frac{1}{4}''$ (minimum) Asphaltic Concrete Leveling Course, Item B-35
CS-1 Type 'C' water proofing Item S-3

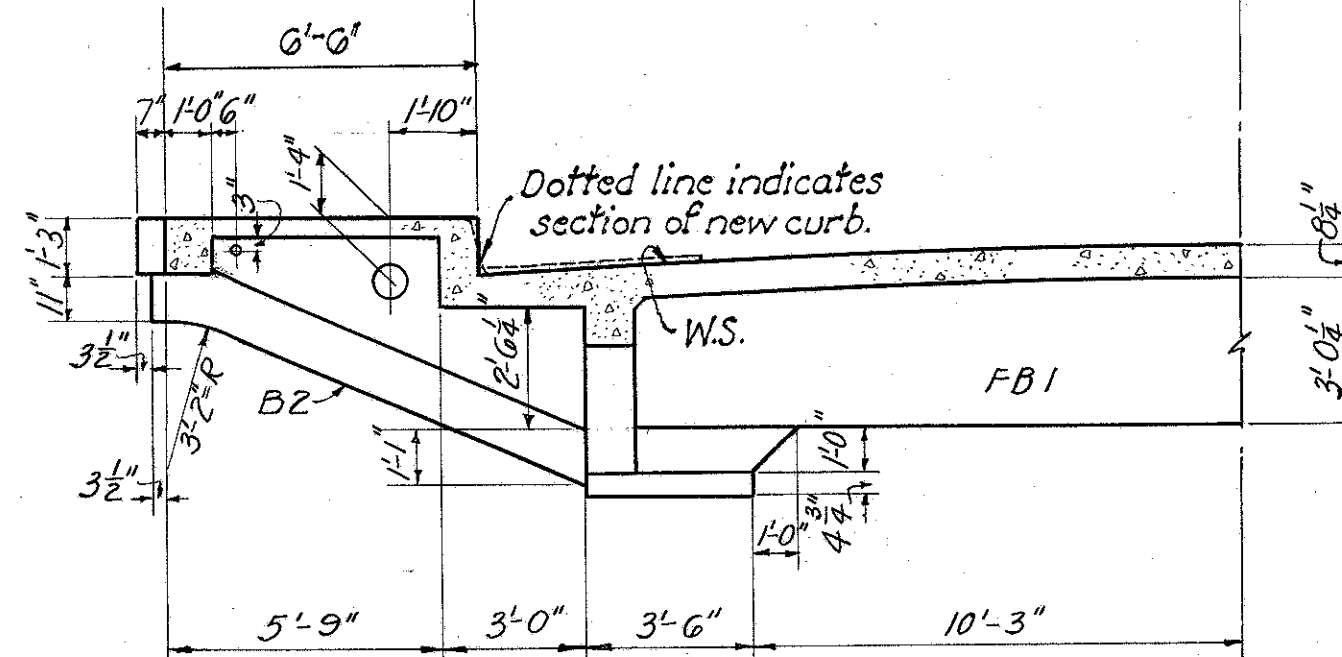


SEC. B-B

$\frac{1}{4}''$ Asphaltic Concrete surface course, Item T-35.
 $\frac{1}{4}''$ (minimum) Asphaltic Concrete Leveling Course, Item B-35
Type 'C' water proofing Item S-3

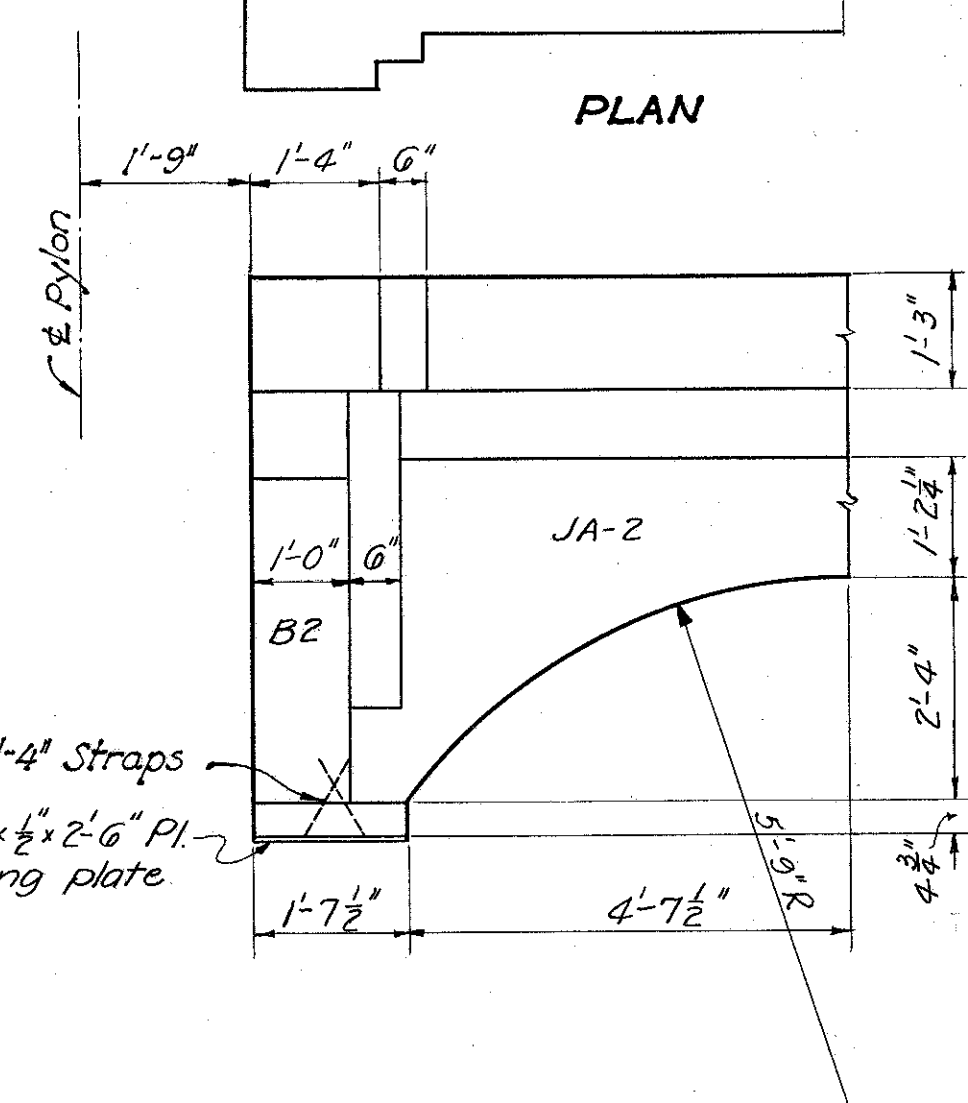


HALF-SECTION, INTERIOR PANEL



HALF-SECTION, END PANEL

Scale: $\frac{1}{4}'' = 1'-0''$



PARTIAL SIDE ELEVATION SHOWING END BRACKET (B2) & JACK ARCH (JA2)

Scale: $\frac{1}{2}'' = 1'-0''$

See Sheet No. 15 for proposed sliding plates

SEC. C-C

Scale: $\frac{1}{2}'' = 1'-0''$

STATE OF OHIO DEPARTMENT OF HIGHWAYS BUREAU OF BRIDGES					
DETAILS OF STRINGER, SLAB & FLOOR BEAM BRIDGE No. LA-20-56 OVER CHAGRIN RIVER LAKE COUNTY SEC. LAK-20-560					
DESIGNED	DRAWN	TRACED	CHECKED	REVIEWED	DATE
	RJC	H.T.	W.C.K.	A.R.F.	11/12/47