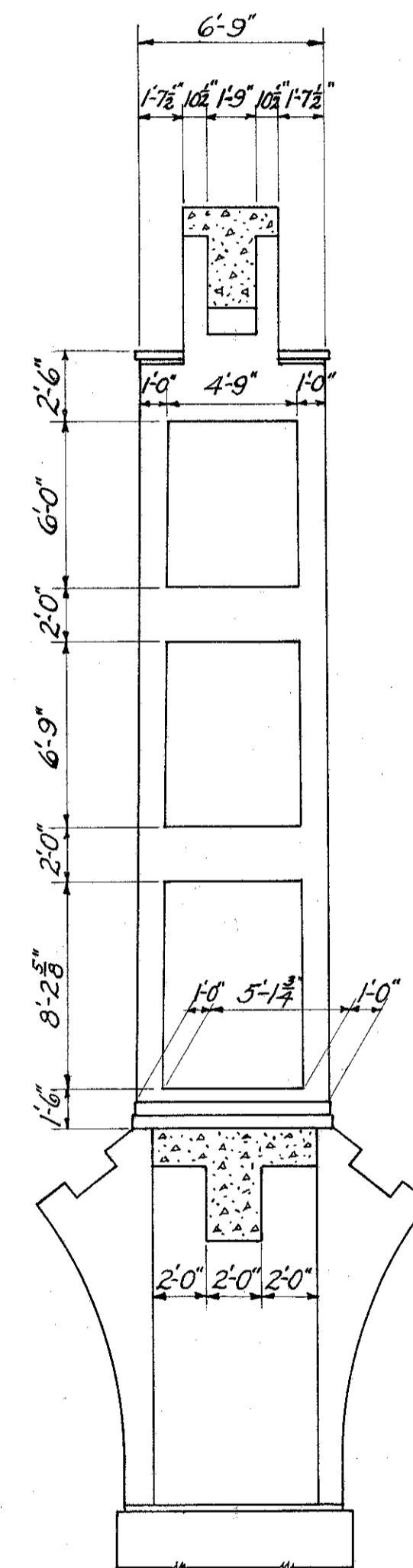


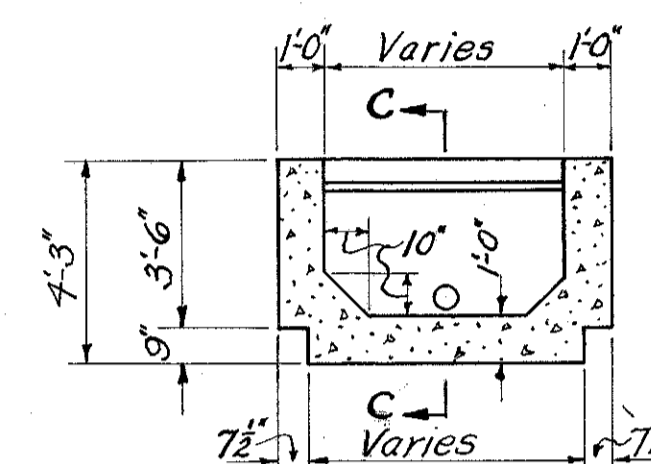
SIDE ELEVATION

END ELEVATION

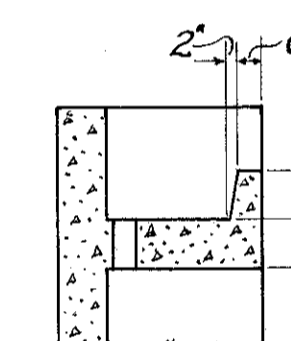
DETAILS OF TYPICAL PIER  
Piers 2 to 9 incl. are identical above spring line.



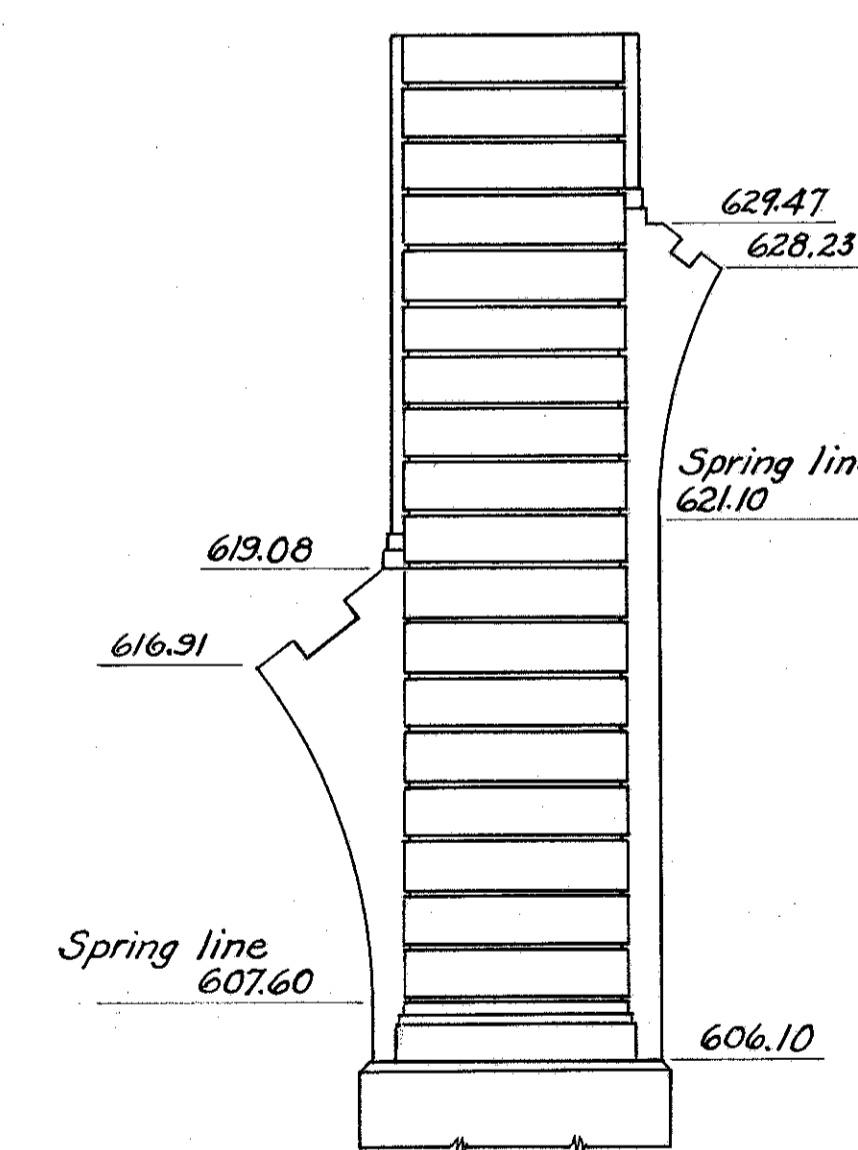
SECTION A-A



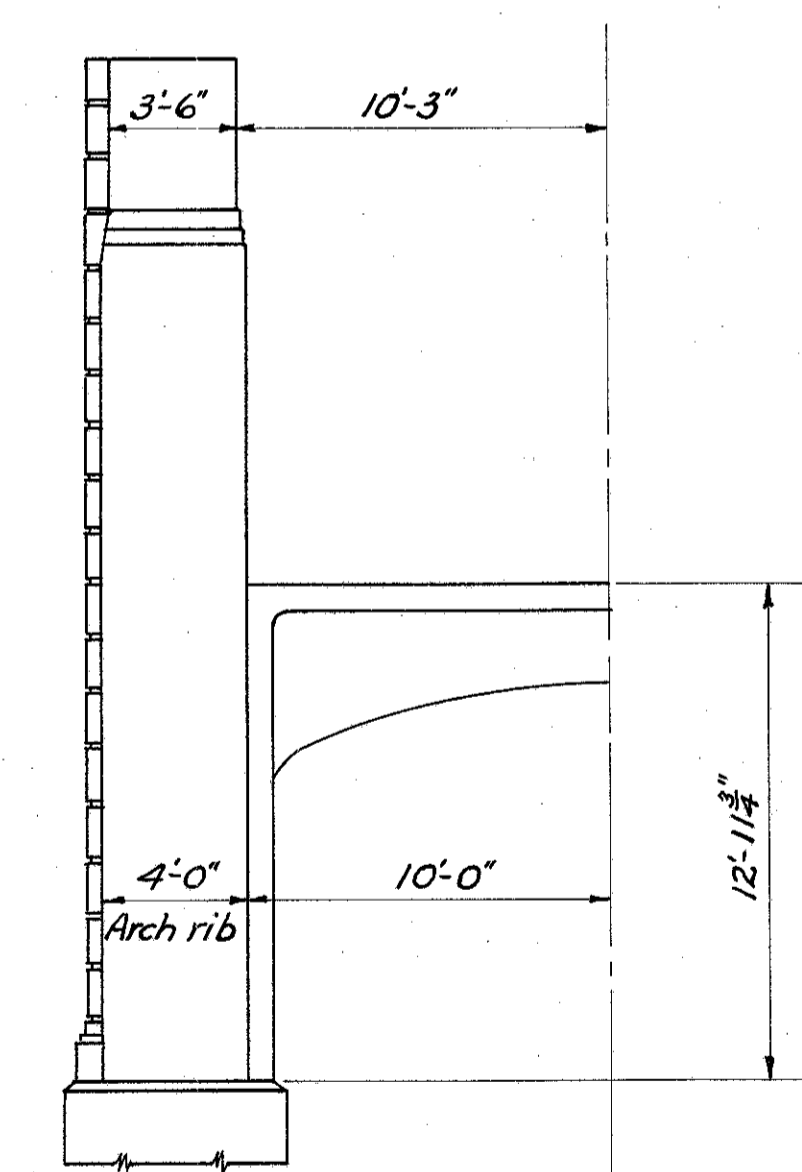
SECTION B-B  
Scale 1/4" = 1'-0"



SECTION C-C  
Scale 1/4" = 1'-0"



SIDE ELEVATION



END ELEVATION

DETAILS OF END PIERS, #1 & #10

STATE OF OHIO DEPARTMENT OF HIGHWAYS BUREAU OF BRIDGES						
DETAILS OF PIERS BRIDGE No. LA-20-56 OVER CHAGRIN RIVER LAKE COUNTY Sec. LAK-20-560						
DESIGNED	DRAWN	TRACED	CHECKED	REVIEWED	DATE	REVISED
	RJC	LOW	W.C.K.	A.P.A.	11/24/47	