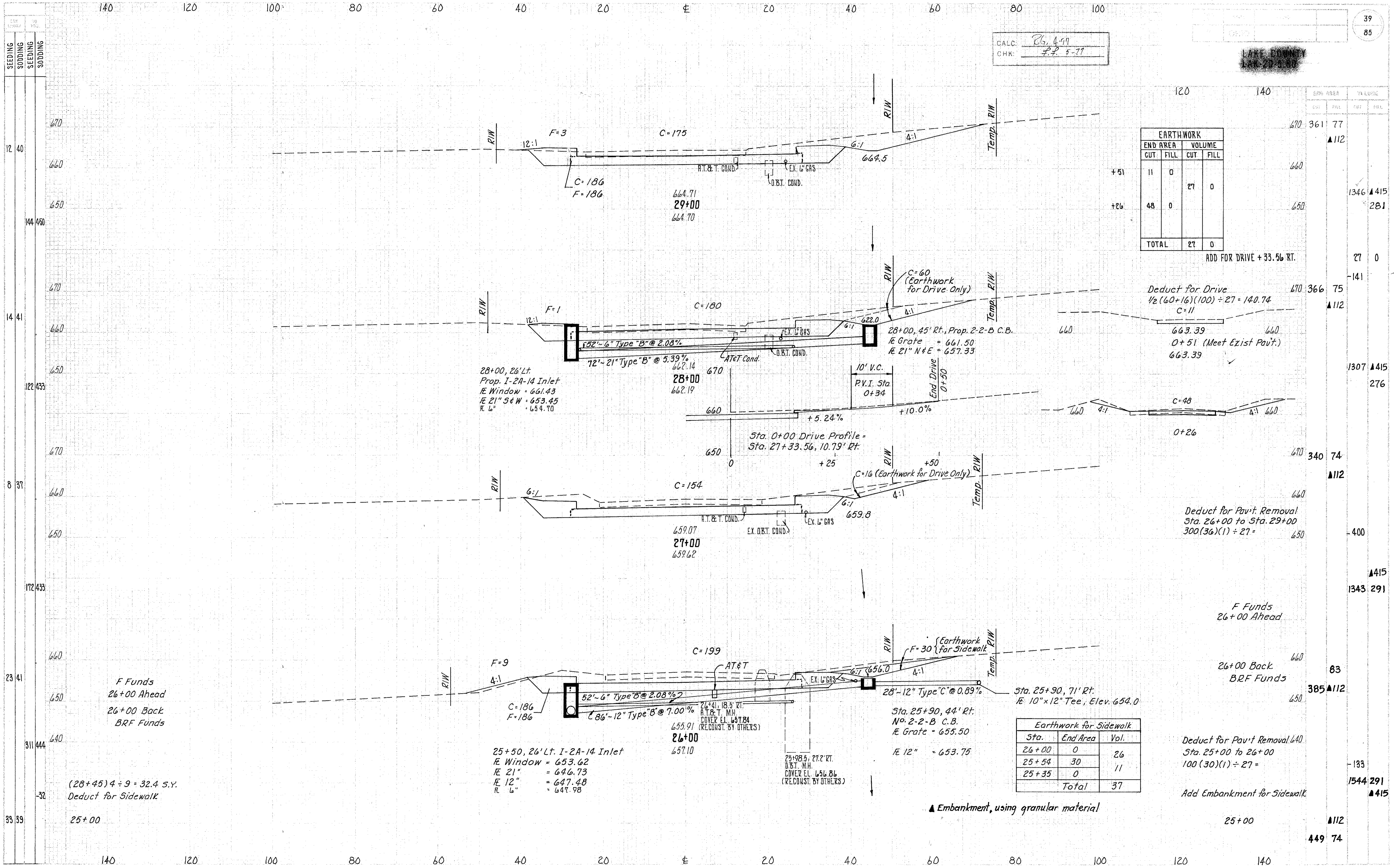


CALC: PG. 4-77  
CHK: P.P. 5-77

LAKE COUNTY



EARTHWORK			
END AREA		VOLUME	
CUT	FILL	CUT	FILL
11	0	27	0
48	0		
TOTAL		27	0

ADD FOR DRIVE + 33.56 RT.

Deduct for Drive  
 $\frac{1}{2}(60+16)(100) \div 27 = 140.74$   
 C=11  
 663.39  
 0+51 (Meet Exist Pavt.)  
 663.39

Deduct for Pavt Removal  
 Sta. 26+00 to Sta. 29+00  
 $300(36)(1) \div 27 =$

Earthwork for Sidewalk		
Sta.	End Area	Vol.
26+00	0	26
25+54	30	11
25+35	0	
Total		37

Deduct for Pavt Removal  
 Sta. 25+00 to 26+00  
 $100(30)(1) \div 27 =$

Add Embankment for Sidewalk

▲ Embankment, using granular material

F Funds  
 26+00 Ahead  
 26+00 Back  
 BRF Funds

(28+45) 4 ÷ 9 = 32.4 S.Y.  
 Deduct for Sidewalk

25+00

25+00