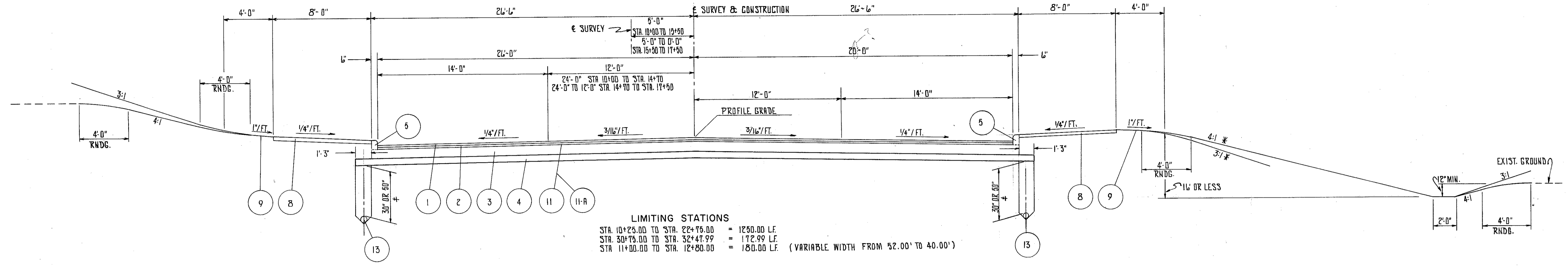
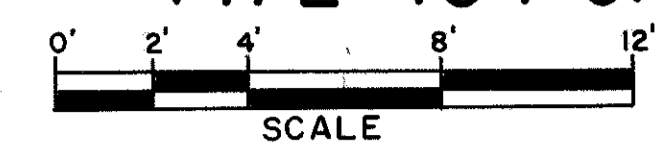


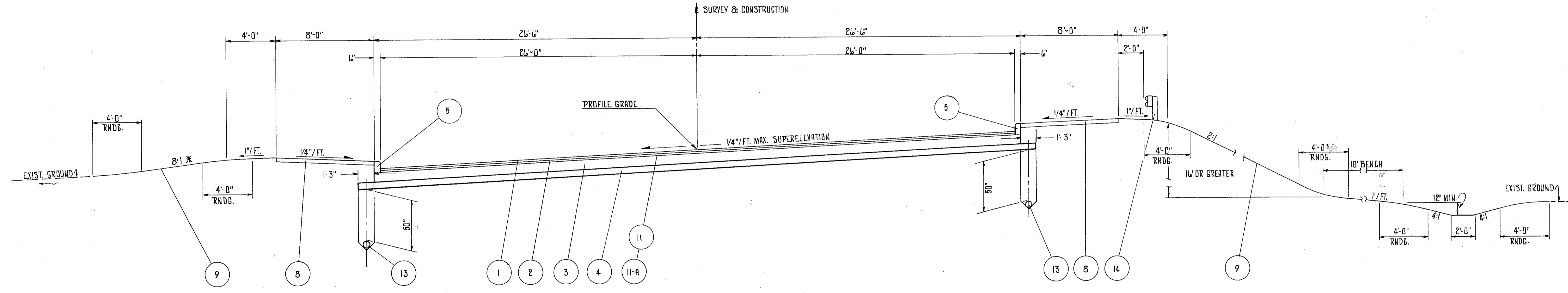
TYPICAL SECTIONS U.S.R. 20 TYPE 404 ON 801

LAKE COUNTY
LAK-20-5.60



LIMITING STATIONS
 STA. 10+25.00 TO STA. 22+76.00 = 1250.00 LF
 STA. 30+75.00 TO STA. 32+47.99 = 172.99 LF
 STA. 11+00.00 TO STA. 12+80.00 = 180.00 LF (VARIABLE WIDTH FROM 52.00' TO 40.00')

NORMAL SECTION



LIMITING STATIONS
 STA. 22+76.00 TO STA. 30+75.00 = 800.00 LF

SUPERELEVATED SECTION

LEGEND

- | | |
|---|---|
| 1 ITEM 404 1/4" ASPHALT CONCRETE AC-20 | 9 ITEM 659 SEEDING AND MULCHING |
| 2 ITEM 402 1 3/4" ASPHALT CONCRETE AC-20 | 11 ITEM 40T TRUCK COAT 702.04, SS-1, SS-1H, MS-2 OR RS-1 OR 702.02, RC-250 APPLIED AT THE RATE OF 0.10 GAL. PER SQ. |
| 3 ITEM 801 8" PORTLAND CEMENT CONCRETE BASE | 11-A ITEM 40T COVER AGGREGATE |
| 4 ITEM 310-6" SUBBASE, GRADING* | 13 ITEM 605 6" PIPE UNDERDRAIN (DEEP OR SHALLOW) |
| 5 ITEM 609 TYPE 2-5 CONCRETE CURBS | 14 ITEM 606 GUARDRAIL TYPE 5 |
| 8 ITEM 608 4" CONCRETE WALK | |

NOTES

* 3:1 MAY BE USED FROM 10' TO 16'
 4:1 THROUGH 8:1 MAY BE USED FROM 0' TO 10'
 † FOR UNDERDRAIN DEPTH SEE PLAN-PROFILE SHEETS