

CALC. BY: *LM*
DATE: 2-89
CHKD. BY: *LM*
DATE: 2-89



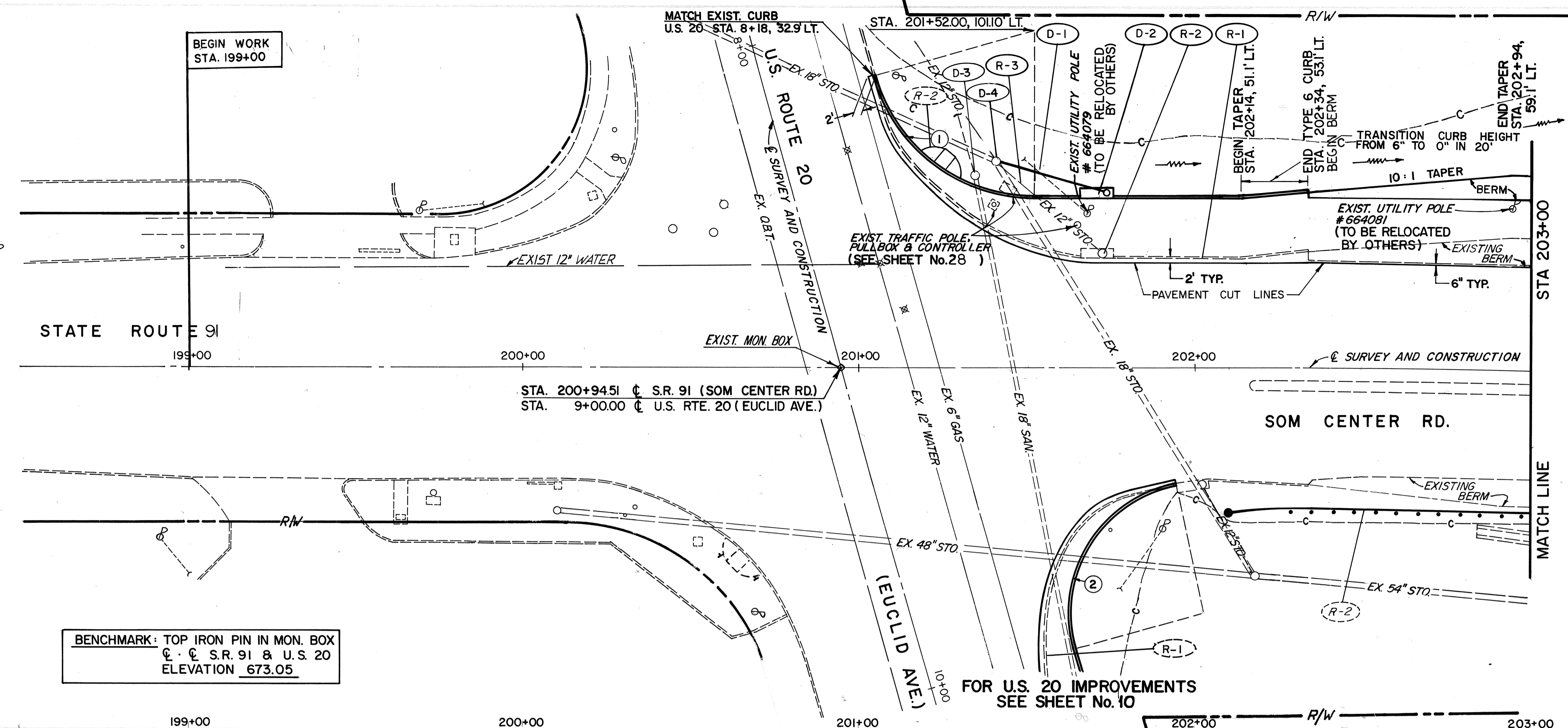
CURVE DATA

①

R = 50.00'
Δ = 74°09'40"
A = 64.72'
T = 37.79'
C = 60.29'

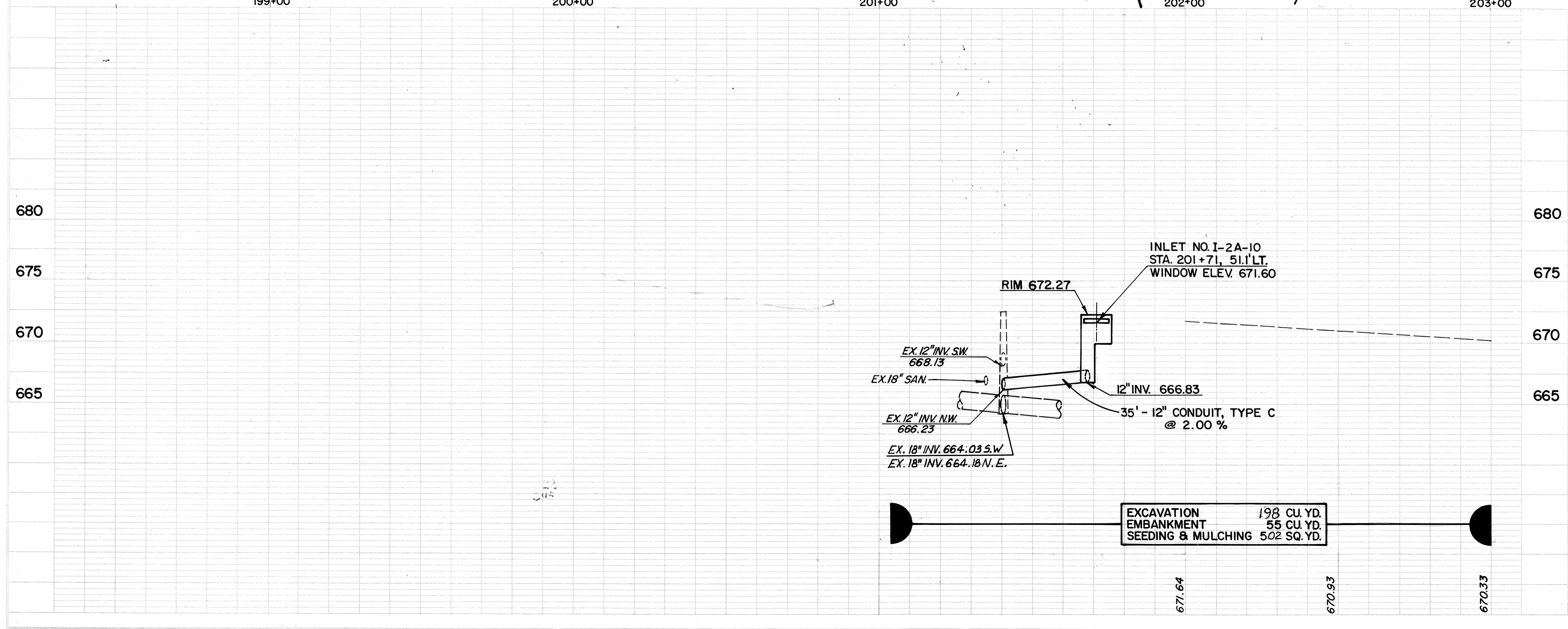
②

R = 40.00'
Δ = 94°17'56"
A = 65.83'
T = 43.12'
C = 58.65'



BENCHMARK: TOP IRON PIN IN MON. BOX
C.C. S.R. 91 & U.S. 20
ELEVATION 673.05

FOR U.S. 20 IMPROVEMENTS
SEE SHEET No. 10



EXCAVATION 198 CU. YD.
EMBANKMENT 55 CU. YD.
SEEDING & MULCHING 502 SQ. YD.

STATION	DESCRIPTION	UNIT	QUANTITY
202+00	PIPE REMOVED, 24" & UNDER	LF.	42
202+00	INLET REMOVED	EA.	1
202+00	CURB REMOVED	LF.	150
603+603	12" CONDUIT, TYPE C	LF.	35
604+604	INLET NO. 2-A-10 AS PER PLAN	EA.	1
604+604	MANHOLE ADJUSTED TO GRADE		2
TOTALS			363

QUANTITY SUB-SUMMARY

REF.	LOCATION	LF.	EA.	LF.	EA.	LF.	EA.
R-1	STA. 201+04 TO 202+34, LT.						
R-2	STA. 201+71, 35.1' LT.						
R-3	STA. 201+41 TO 201+71, LT.						
D-1	STA. 201+41, 62.51' LT. TO 201+71, 51.1' LT.						
D-2	STA. 201+71, 51.1' LT.						
D-3	STA. 201+35, 58' LT.						
D-4	STA. 201+41, 62' LT.						
TOTALS							

PLAN
NO. 10

PROFILE
NO. 10