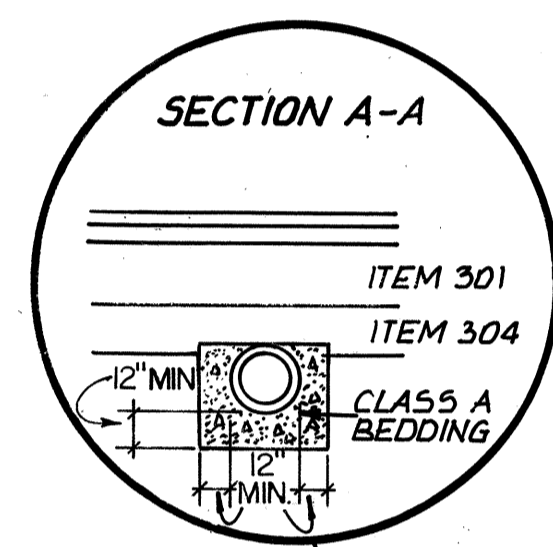
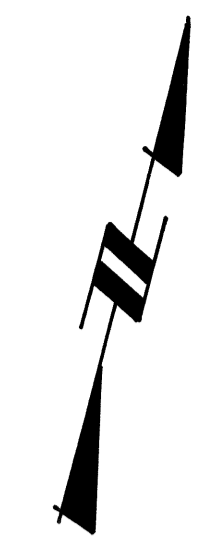
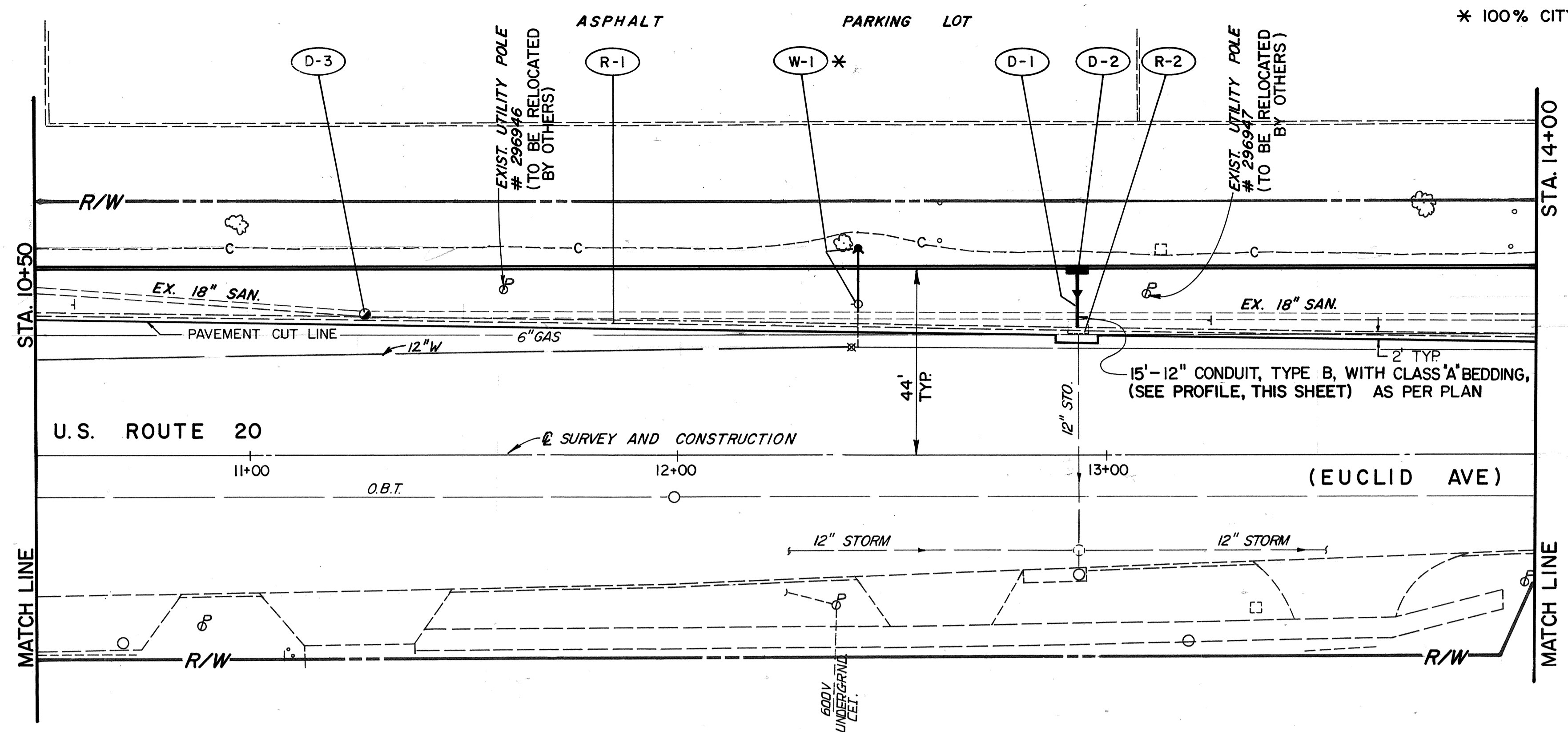
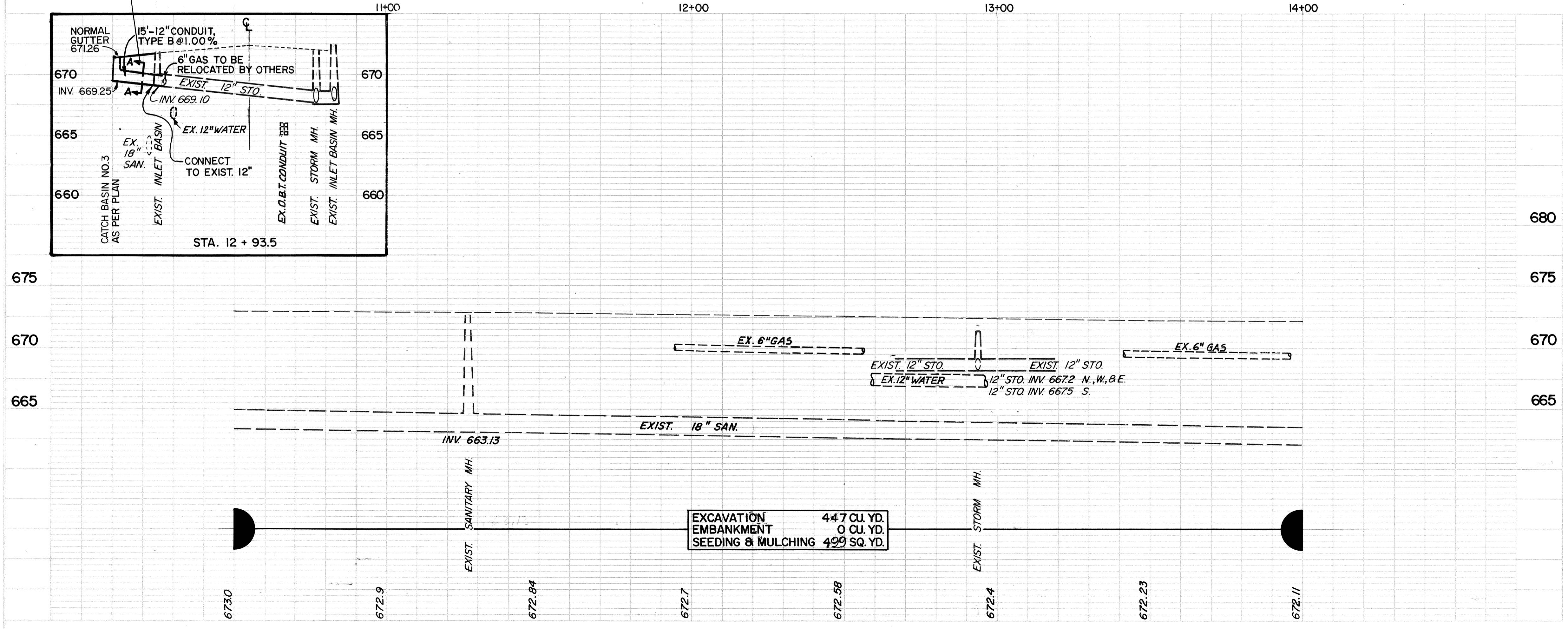
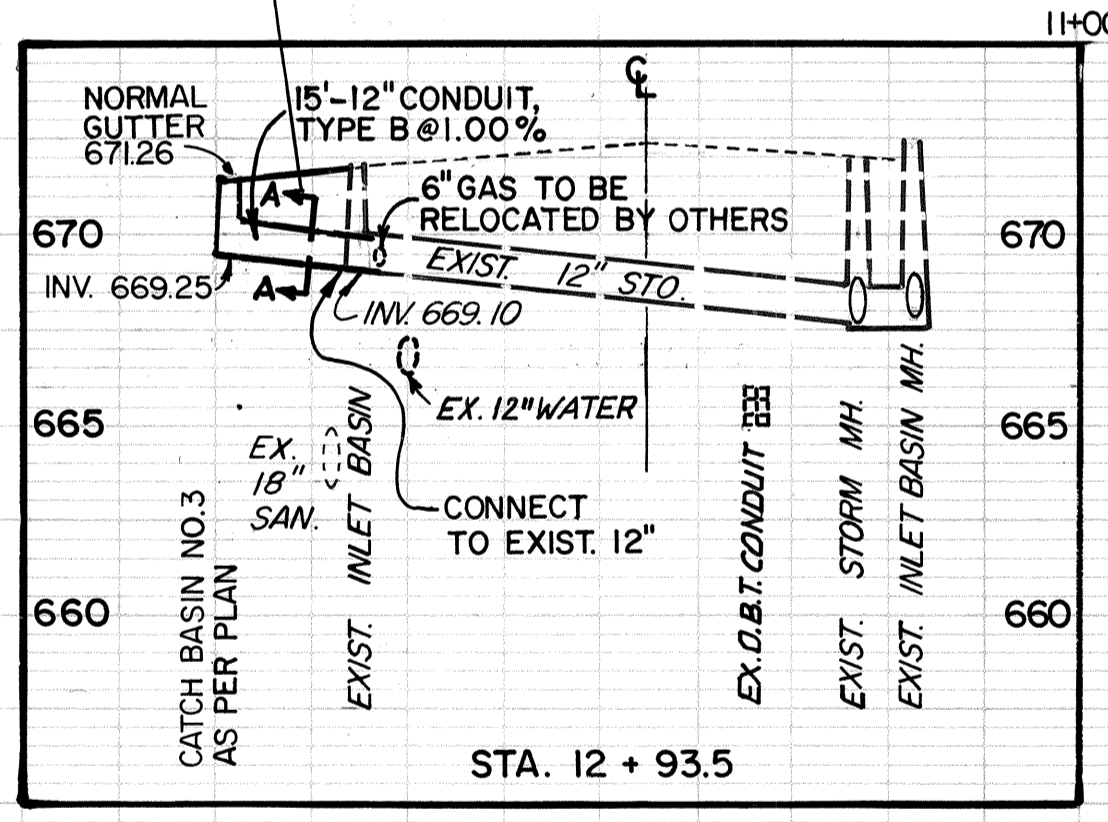


* 100% CITY PARTICIPATION



BENCHMARK: TOP IRON PIN IN MON. BOX
 C.C. U.S. 20 & SR. 91
 ELEVATION 673.05



EXCAVATION 44.7 CU. YD.
 EMBANKMENT 0 CU. YD.
 SEEDING & MULCHING 429 SQ. YD.

ITEM NO.	DESCRIPTION	UNIT	QUANTITY
603	HYDRANT EXTENDED AND ADJUSTED TO GRADE	EA.	1
604	MANHOLE ADJUSTED TO GRADE	EA.	1
604	CATCH BASIN NO. 3	EA.	1
603	AS PER PLAN 12\"/>		

REF.	LOCATION	L.F.	E.A.	QUANTITY
R-1	STA. 10+50 TO 14+00, LT.	350		
R-2	STA. 12+93.5, 29.4' LT.		1	
D-1	STA. 12+93.5, 29' LT. TO 44' LT.			15
D-2	STA. 12+93.5, 44' LT.			1
D-3	STA. 11+26.8, 33.6' LT.			
W-1	STA. 12+42, LT.			1
TOTALS				350

PLAN & PROFILE STA. 10+50 TO STA. 14+00