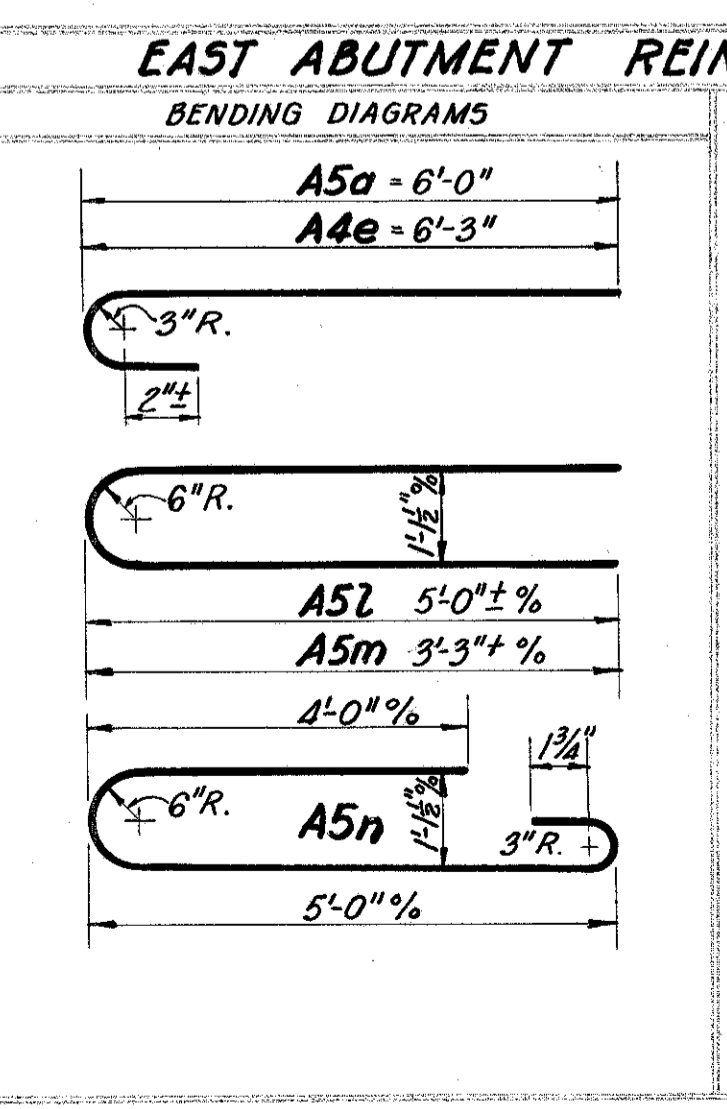
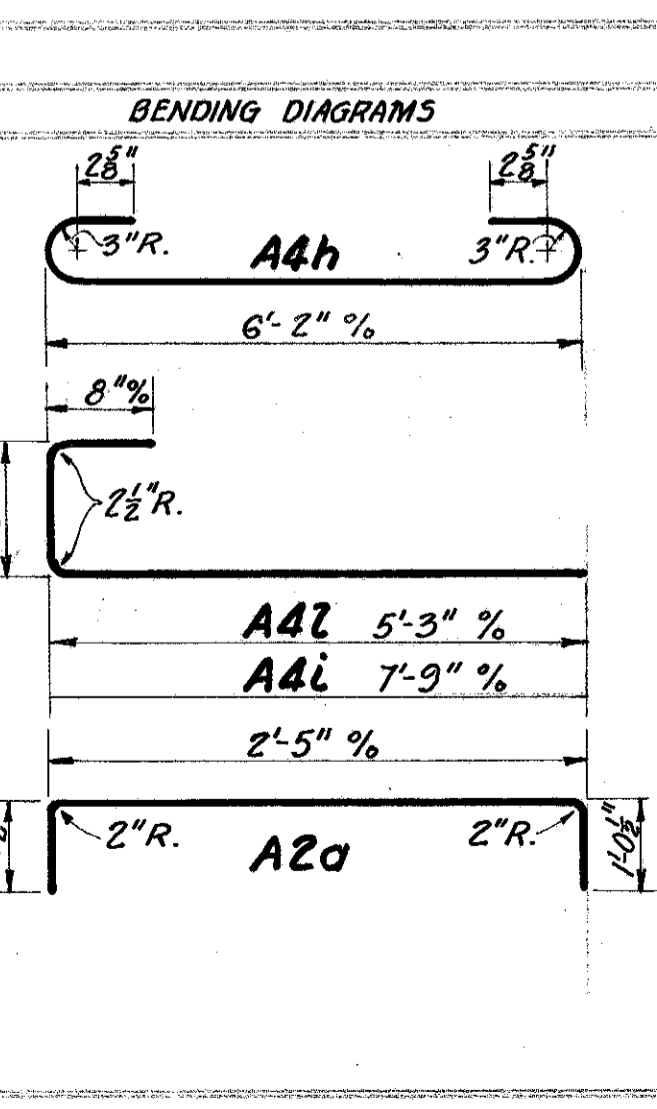


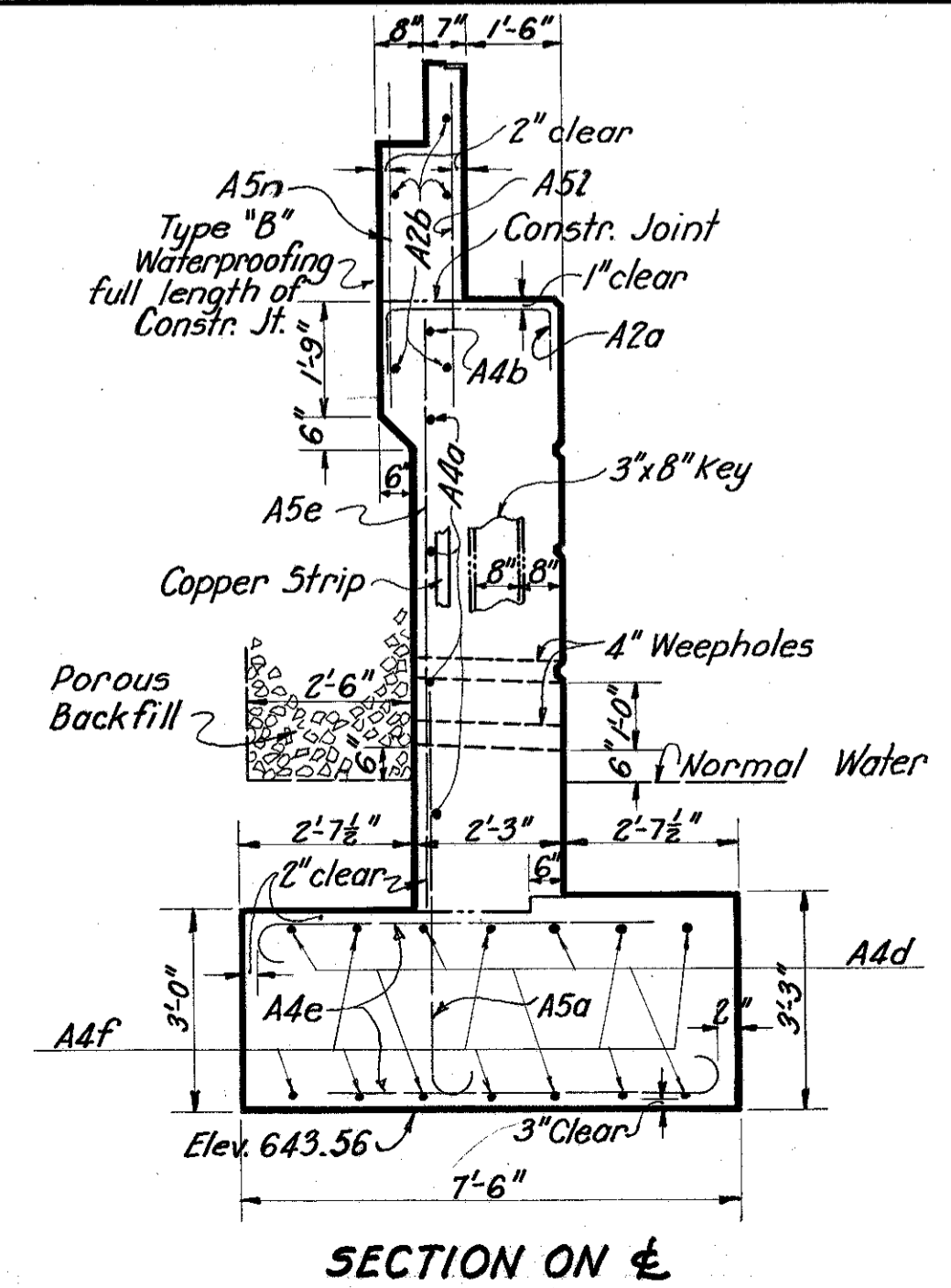
NO	SIZE	NO.	LENGTH	WEIGHT	SHAPE
A5a	3/4"	117	6'-9"	1190	Bt.
A5b	3/4"	5	6'-9"	50	St.
A5c	3/4"	14	8'-3"	120	St.
A5d	3/4"	8	8'-9"	110	St.
A5e	3/4"	8	9'-0"	110	St.
A5f	3/4"	7	9'-6"	100	St.
A5g	3/4"	10	10'-0"	150	St.
A5h	3/4"	3	11'-9"	50	St.
A5i	3/4"	3	12'-9"	60	St.
A5j	3/4"	1	13'-6"	20	St.
A5k	3/4"	3	14'-6"	70	St.
A5l	3/4"	24	10'-6"	380	Bt.
A5m	3/4"	14	8'-0"	170	Bt.
A5n	3/4"	10	10'-9"	160	Bt.
A4a	5/8"	7	36'-6"	270	St.
A4b	5/8"	2	34'-0"	70	St.
A4c	5/8"	9	10'-0"	90	St.
A4d	5/8"	18	27'-6"	520	St.



MARK	SIZE	NO.	LENGTH	WEIGHT	SHAPE
A4e	5/8"	154	7'-0"	1130	Bt.
A4f	5/8"	8	10'-0"	80	St.
A4g	5/8"	5	8'-0"	40	St.
A4h	5/8"	9	7'-9"	70	Bt.
A4i	5/8"	4	9'-3"	40	Bt.
A4k	5/8"	4	6'-6"	30	St.
A4l	5/8"	4	6'-9"	30	Bt.
A4m	5/8"	2	8'-6"	20	St.
A4n	5/8"	2	11'-0"	20	St.
A2a	1/2"	78	4'-3"	20	Bt.
A2b	1/2"	10	25'-0"	170	St.
A2c	1/2"	5	8'-0"	30	St.
A2d	1/2"	5	9'-9"	30	St.



EAST ABUT. STEEL TOTAL 5400 lbs



NOTE
See West Abutment Sheet for "Detail of Copper Contraction Strip" and "Detail of Rustication."

STATE OF OHIO
DEPARTMENT OF HIGHWAYS
BUREAU OF BRIDGES

**EAST ABUTMENT
STEEL LIST AND DETAILS**
BRIDGE NO. LA-20-298
OVER ARCOLE CREEK
LAKE COUNTY S.H. 2
SEC. Q - PART STA. 658+50.0

DESIGNED	DRAWN	TRACED	CHECKED	REVIEWED	DATE	REVISED
J.R.D.	J.R.D.	RL	F.G.W.	H.A.R.	7/3/35	