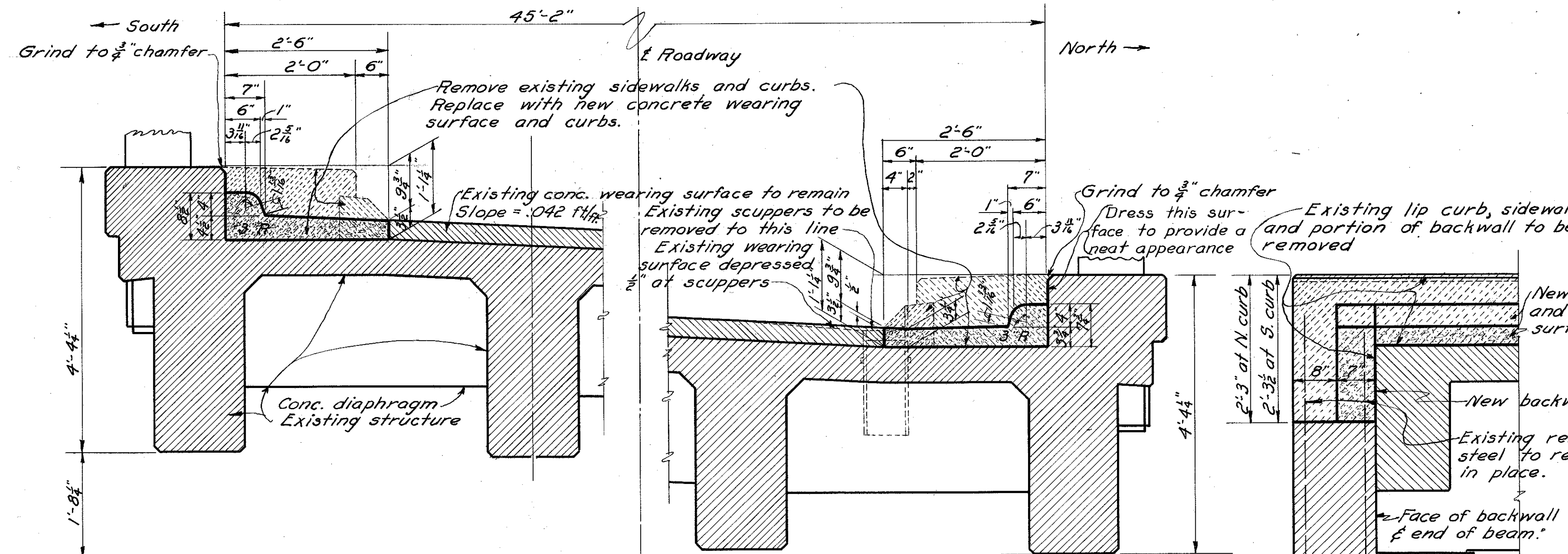
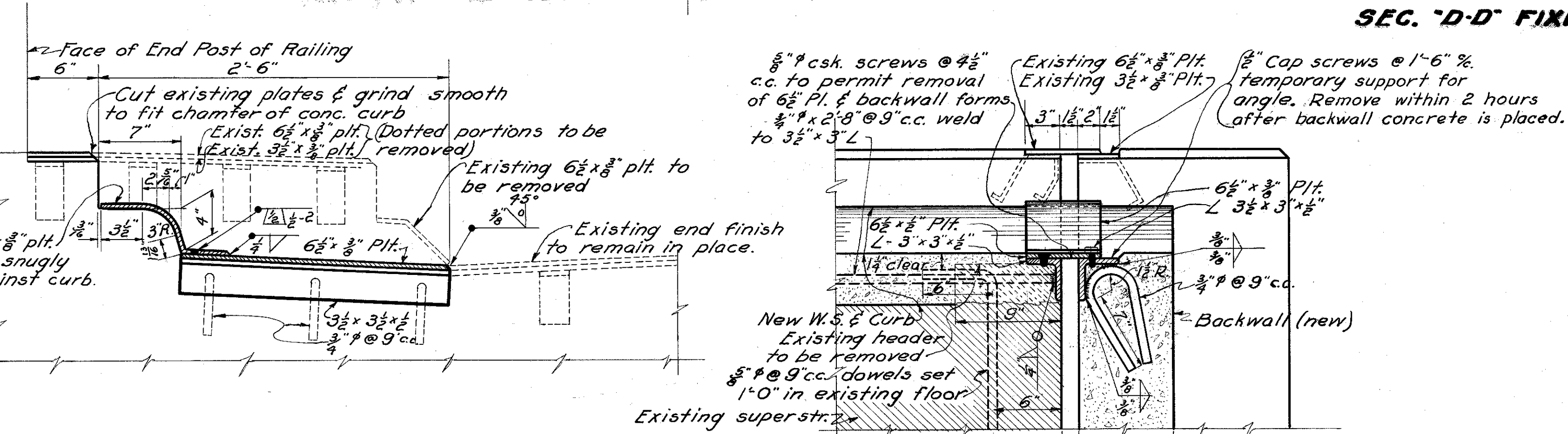


LAKE COUNTY  
S. H. 2 SEC. Q(P)  
SEC. Q(P)



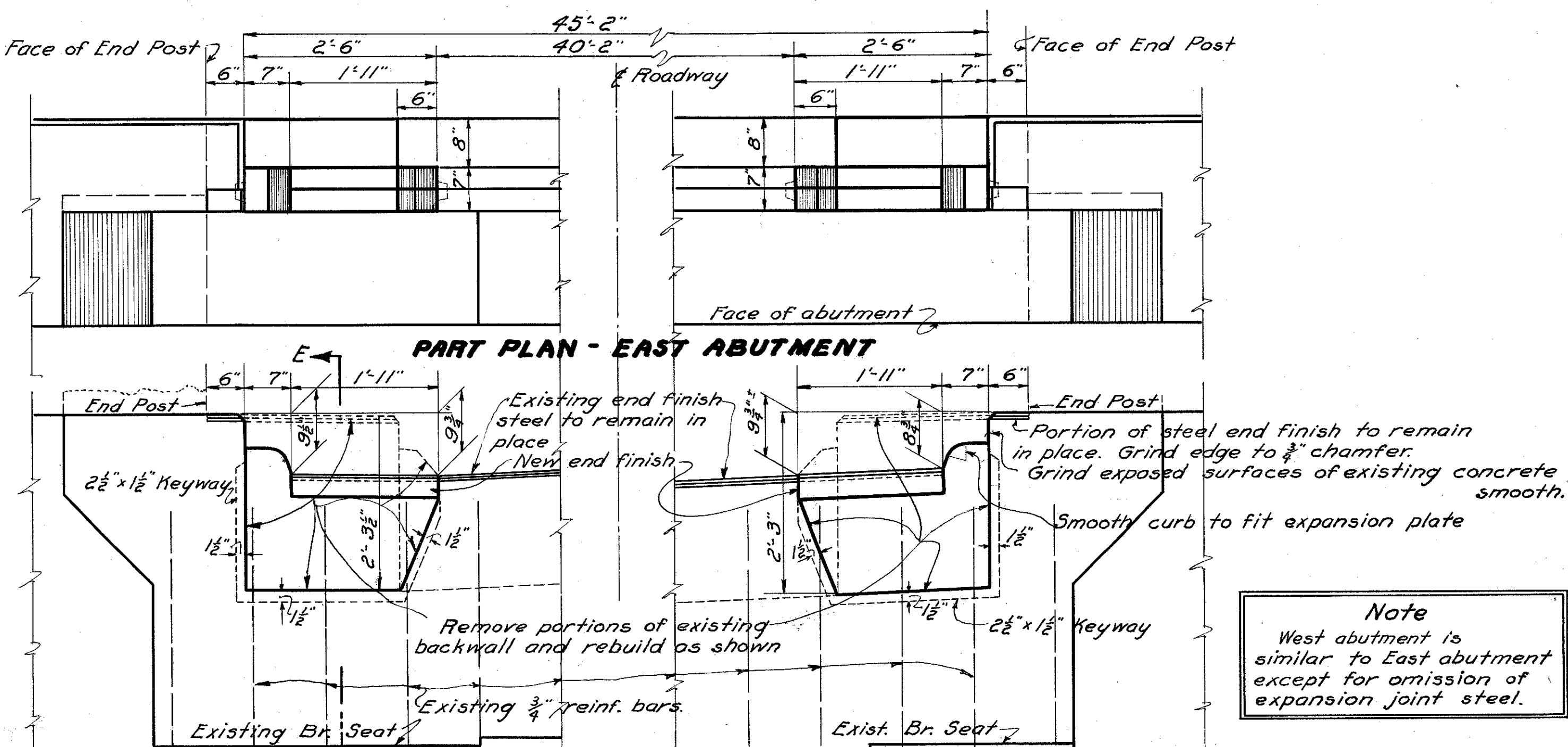
PART TYPICAL SECTION THRU ROADWAY - SEC 'A-A'

SEC. 'D-D' FIXED END



SEC. 'B-B' THRU EXPANSION JOINT  
North Curb shown - South Curb similar.

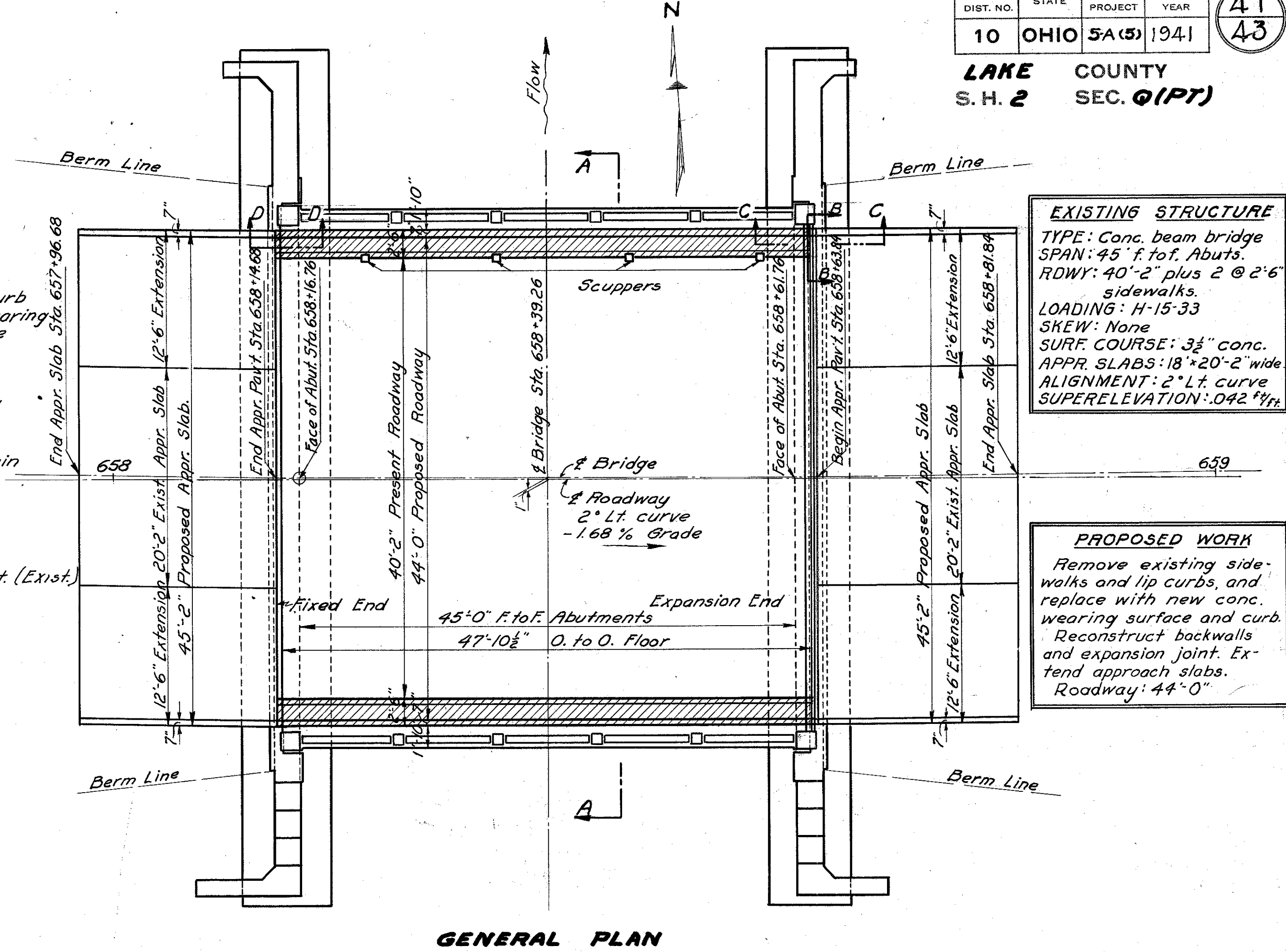
PART SEC. 'C-C' - EXPANSION JT.



PART PLAN - EAST ABUTMENT

PART ELEVATION - EAST ABUTMENT

**Note**  
West abutment is similar to East abutment except for omission of expansion joint steel.



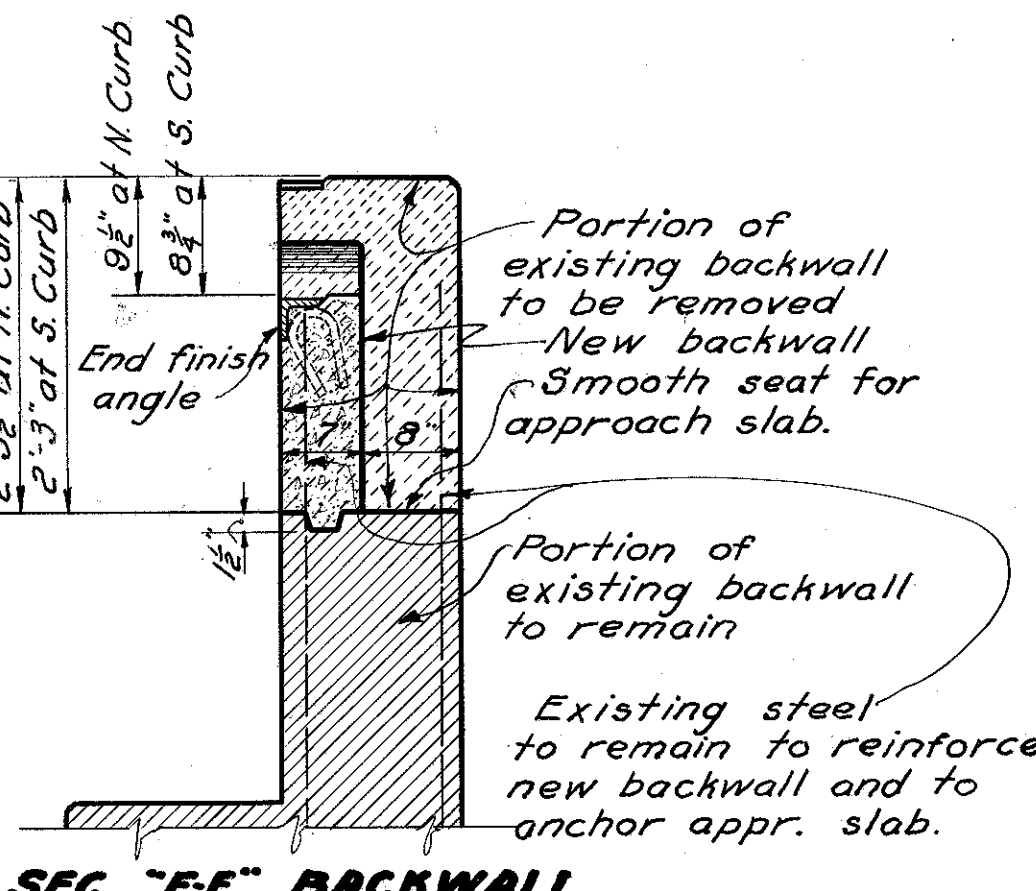
GENERAL PLAN

GENERAL NOTES

**PROPOSED WORK:** Remove existing lip curbs, sidewalks, and portions of backwalls. Reconstruct backwalls to provide a seat for approach slab extensions. Replace sidewalk and curb with new 3" concrete wearing surface and lip curbs to fit existing wearing surfaces and proposed approach pavement, providing a roadway 44'-0" face to face of curbs. Reconstruct expansion joint.  
**EXISTING BACKWALL REINFORCING STEEL** in portions of wall to be removed shall be left in place to provide reinforcement for the new sections of backwall and provide anchorage for the approach slab.  
**TWO WAY TRAFFIC** shall be maintained at all times during construction.

ESTIMATED QUANTITIES

Item	Description	Quantity	Unit
S-1	Concrete - Class "C"	3	C.Y.
S-4	Reinforcing steel (Dowels)	10	Lb.
S-9	Structural steel expansion joint	170	Lb.
S-22	Removal of Portions of exist. structure	9.5	C.Y.
S-23	Dowel Holes	6	each



SEC. 'E-E' BACKWALL

REMOVAL of portions of existing structural steel paid for in price per cu. yd. for removal of portions of existing structure.

FINISHING of surfaces and edges of existing concrete that will be exposed by this reconstruction, paid for in price per cu. yd. of new concrete, and finishing of existing structural steel paid for in price per lb. for new structural steel.

STATE OF OHIO  
DEPARTMENT OF HIGHWAYS  
BUREAU OF BRIDGES

**GENERAL PLAN  
STRUCTURAL DETAILS FOR  
WIDENING BRIDGE No. LA-20-298  
OVER ARCOLE CREEK**

LAKE CO. S. H. 2  
SEC. Q(P) STA. 658+39.26  
FED. AID No. FA5-A(5)-41

DESIGNED	DRAWN	TRACED	CHECKED	DATE	REVISOR	REVISION
E.E.S.	E.E.S.	W.C.F.	C.J.W.	11/4/40		