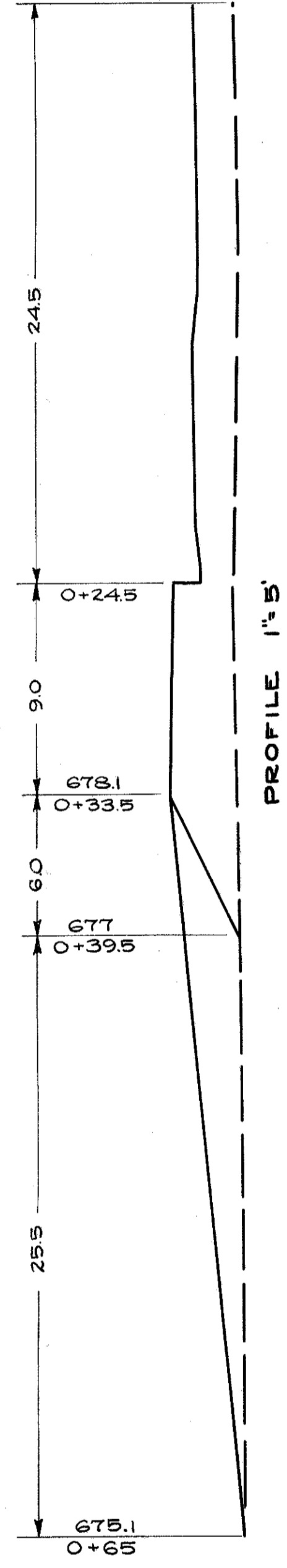
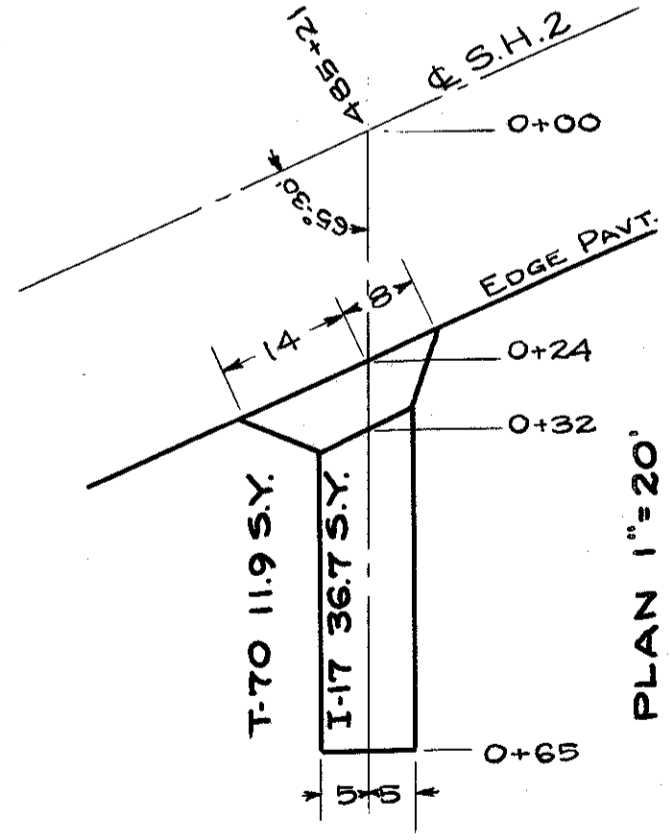


LAKE COUNTY  
S. H. 2 SEC. Q (PT.)

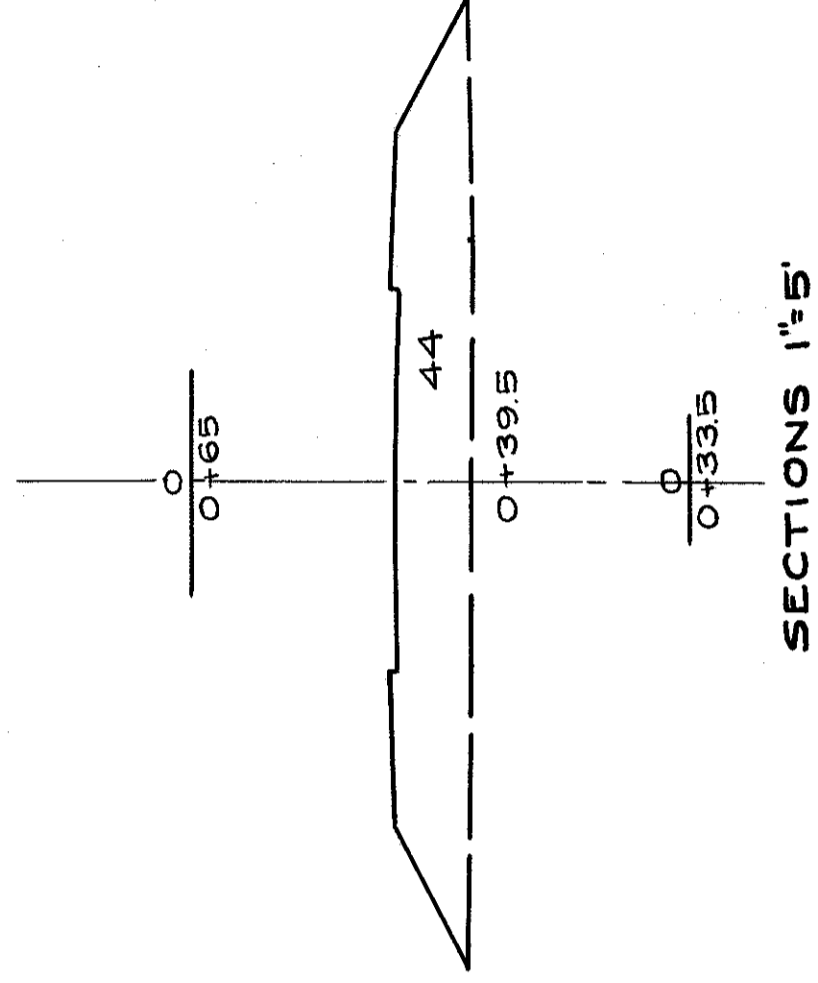


PROFILE 1"=5'



PLAN 1"=20'

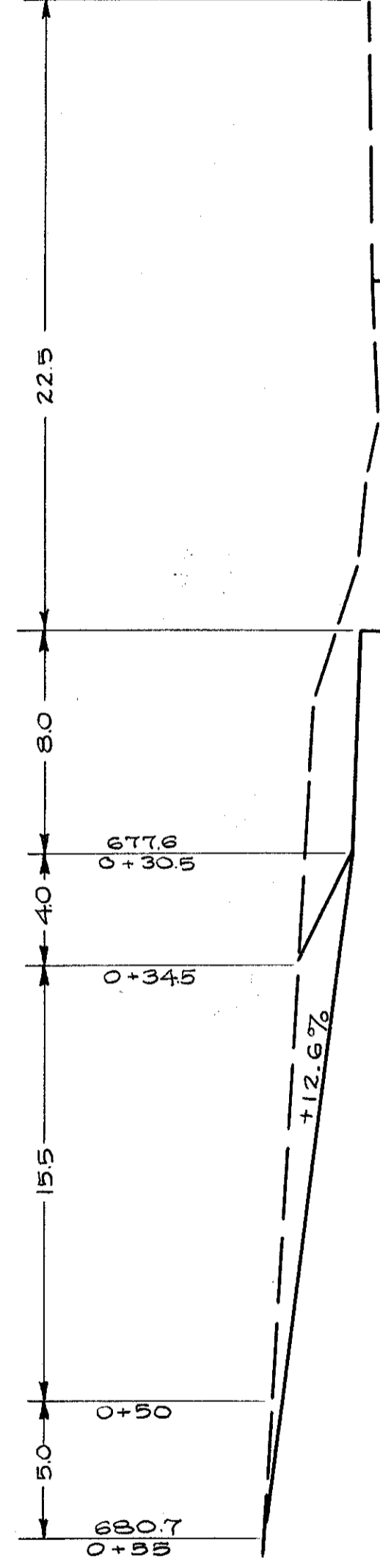
END AREA	CUT	FILL	EXC.	EMB.	C.U.YDS.
0	0	0	0	0	21
0	0	4.4	0	0	5
TOTALS					0 26



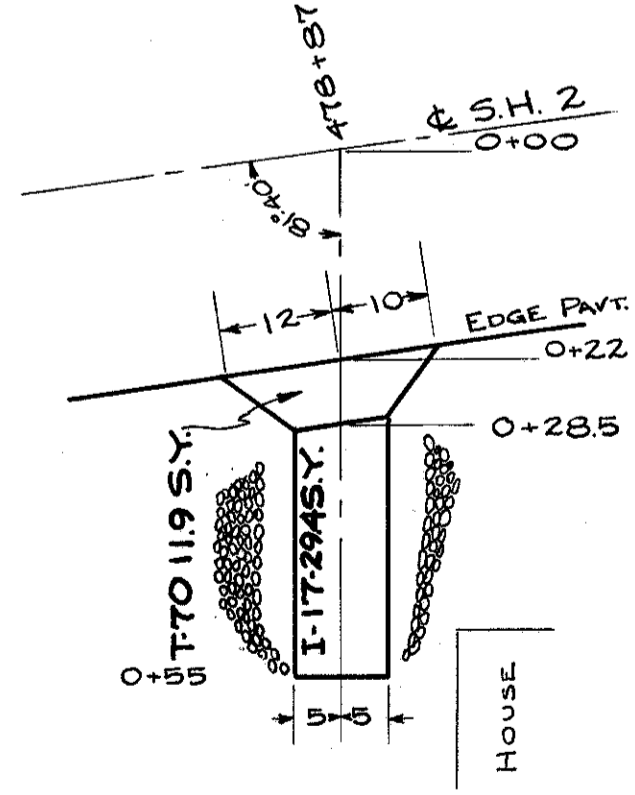
SECTIONS 1"=5'

QUANTITIES  
T-70 (6') 122 S.Y.  
I-17 (3') 31 C.Y.  
I-11 DEDUCT 22 L.F.  
EXC. 0 C.Y.  
EMB. 26 C.Y.

DRIVE LT. STA. 485+21

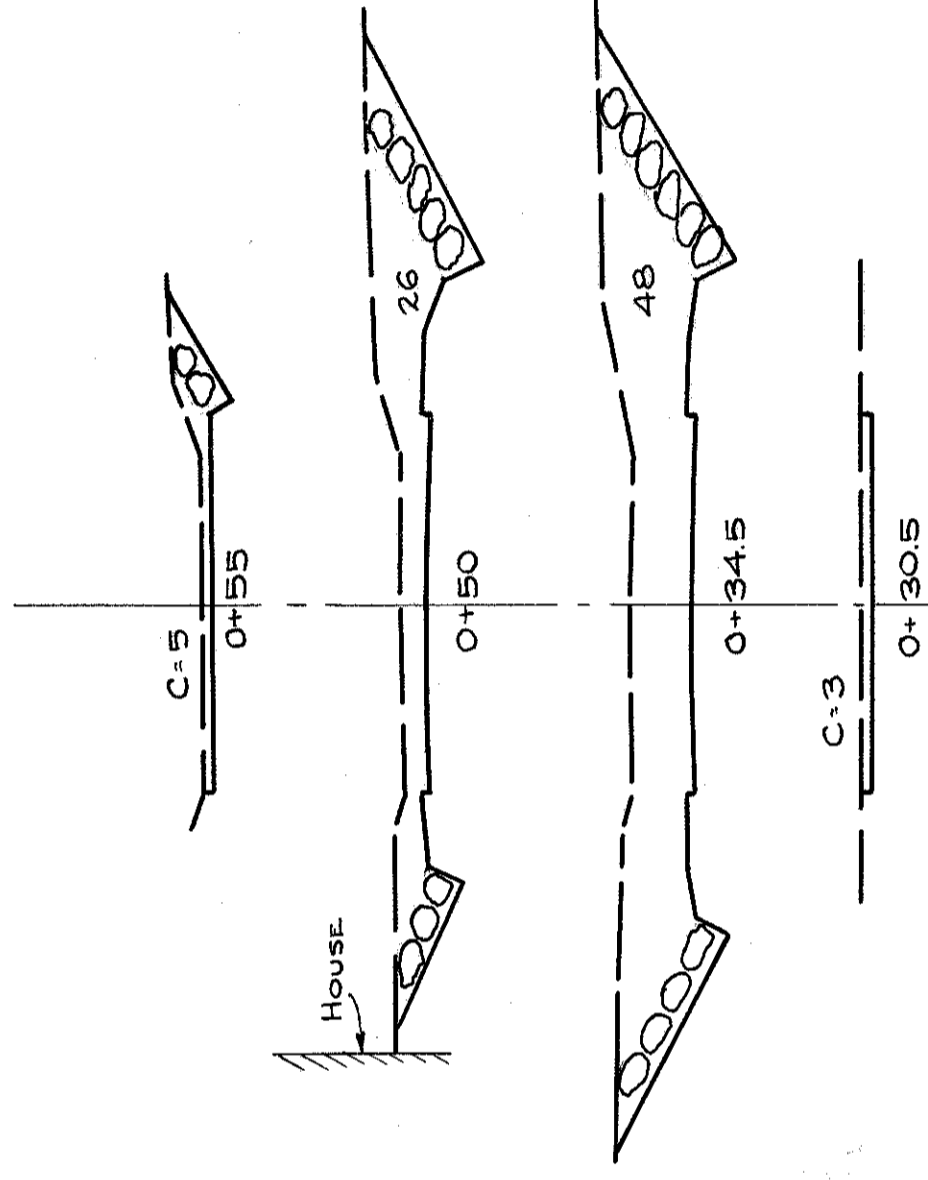


PROFILE 1"=5'



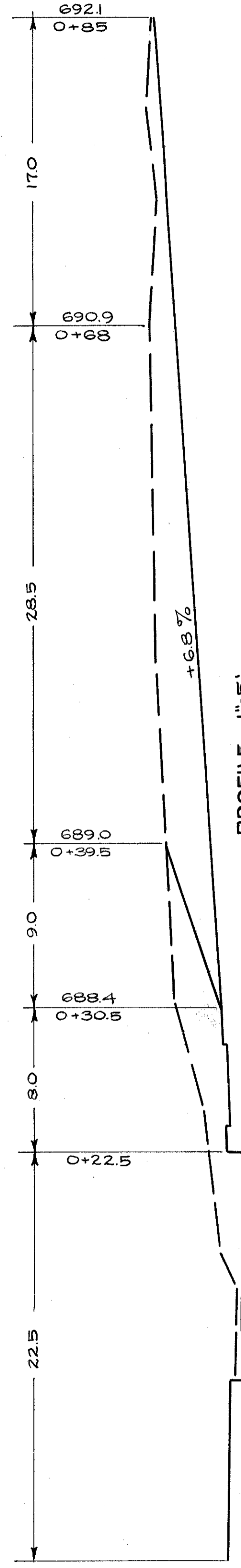
QUANTITIES  
T-70 (6') 11.9 S.Y.  
I-17 (3') 2.5 C.Y.  
I-11 DEDUCT 22 L.F.  
EXC. 31 C.Y.  
EMB. 0 C.Y.  
REMOVED, SALVAGE EXTG. RIPRAP 5 C.U.YDS.  
RIPRAP - TYPE 'A' 15 S.Y.

END AREA	CUT	FILL	EXC.	EMB.	C.U.YDS.
1.5	0	3	0	0	0
26	0	0	21	0	0
48	0	0	4	0	0
3	0	0	0	0	0
TOTALS					31 0

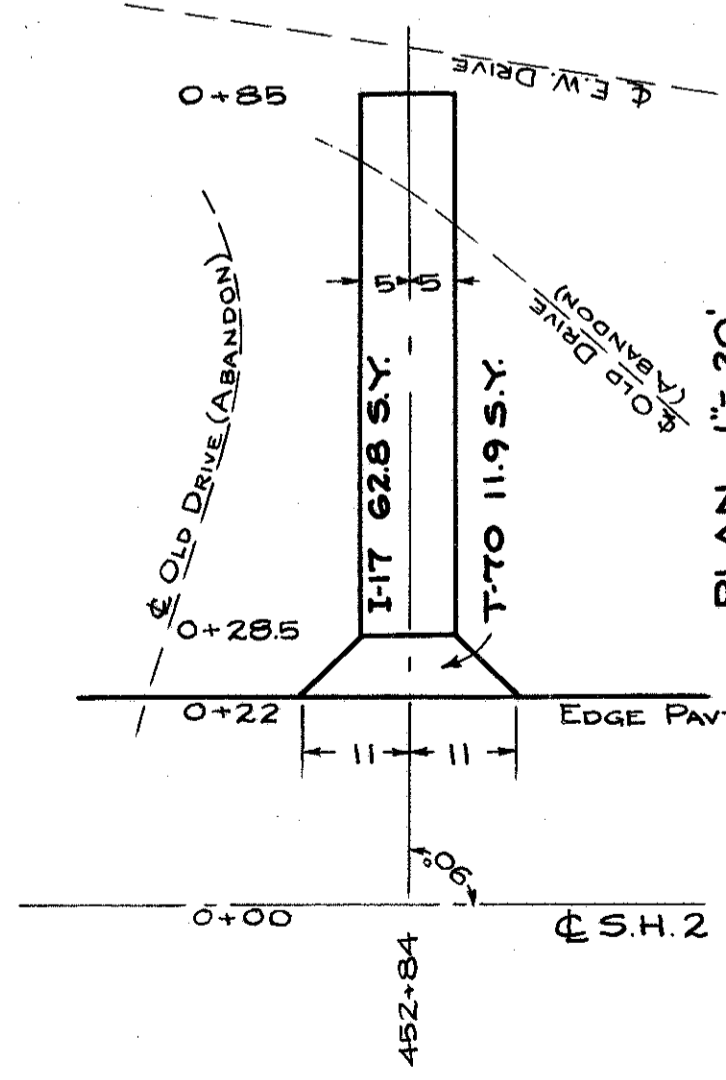


SECTIONS 1"=5'

DRIVE LT. STA. 478+87

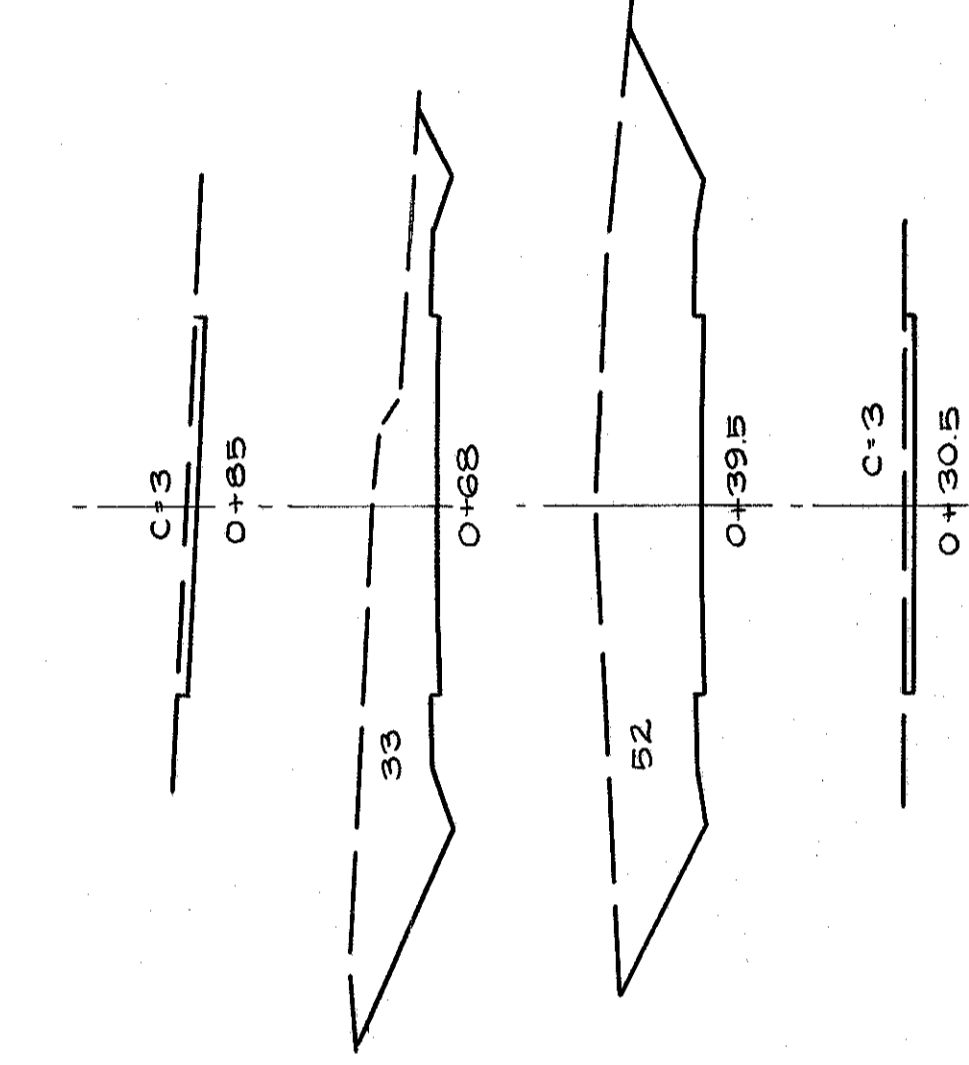


PROFILE 1"=5'



QUANTITIES  
T-70 (6') 11.9 S.Y.  
I-17 (3') 5.2 C.Y.  
I-11 DEDUCT 22 L.F.  
EXC. 68 C.Y.  
EMB. 0 C.Y.

END AREA	CUT	FILL	EXC.	EMB.	C.U.YDS.
3	0	11	0	0	0
33	0	0	45	0	0
52	0	0	9	0	0
3	0	0	0	0	0
TOTALS					68 0



EXC. 3 C.Y. EMB. 0  
0+22.5 TO 0+30.5  
SECTIONS 1"=5'

DRIVE RT. STA. 452+84