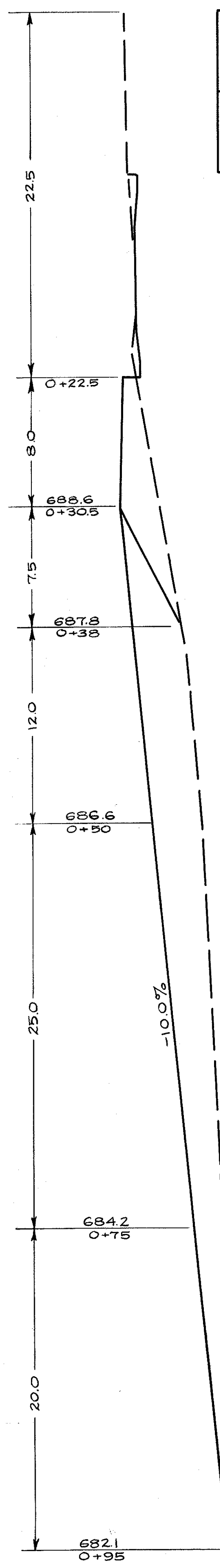
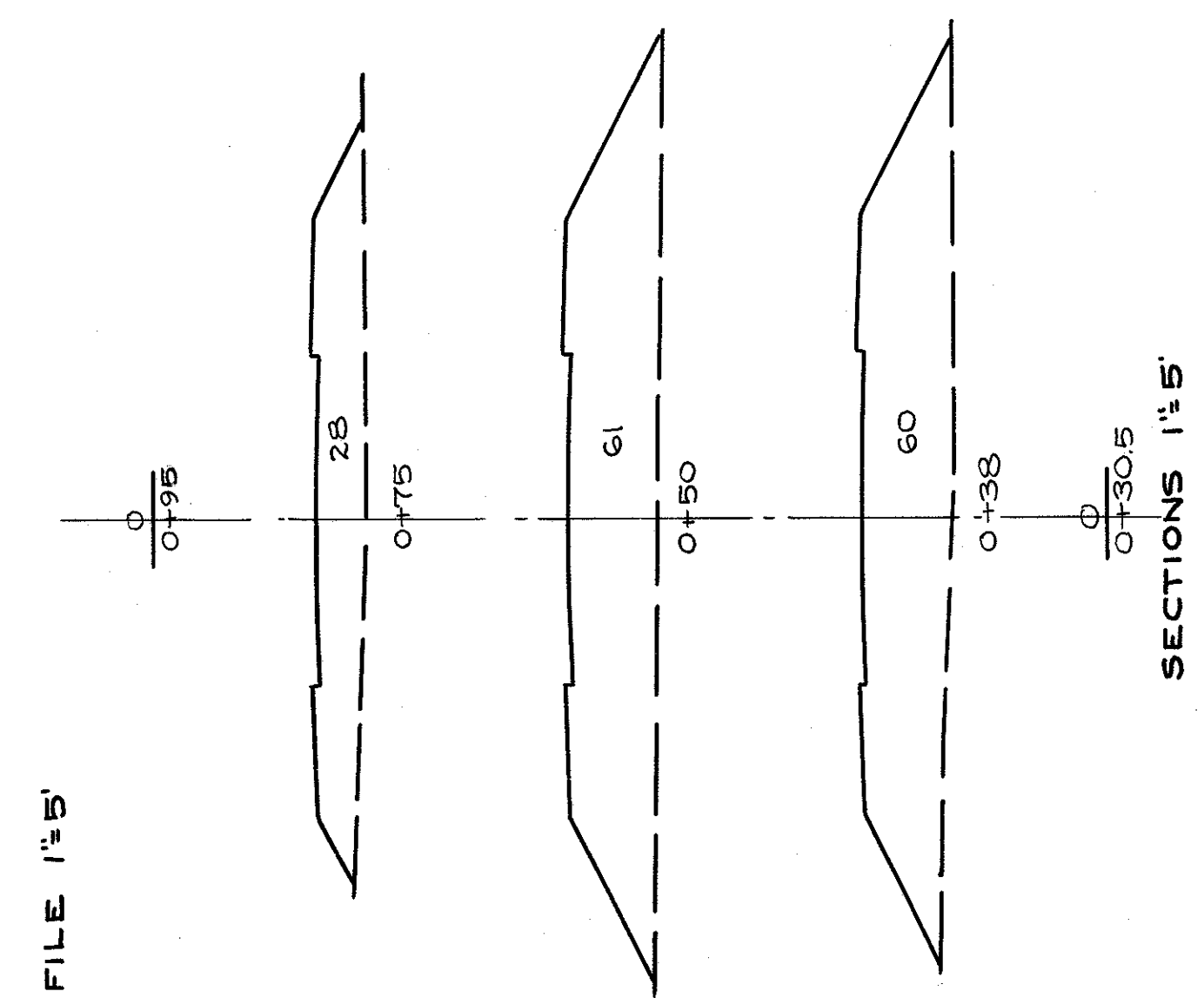


LAKE COUNTY
S.H. 2 SEC. Q (PT.)



END AREA	CU. YDS.	CUT	FILL	EXC.	EMB.
0	0	0	10	0	10
0	0	28	0	0	41
0	0	61	0	0	27
0	0	60	0	0	8
0	0	0	0	0	86
TOTALS	0	0	0	0	0

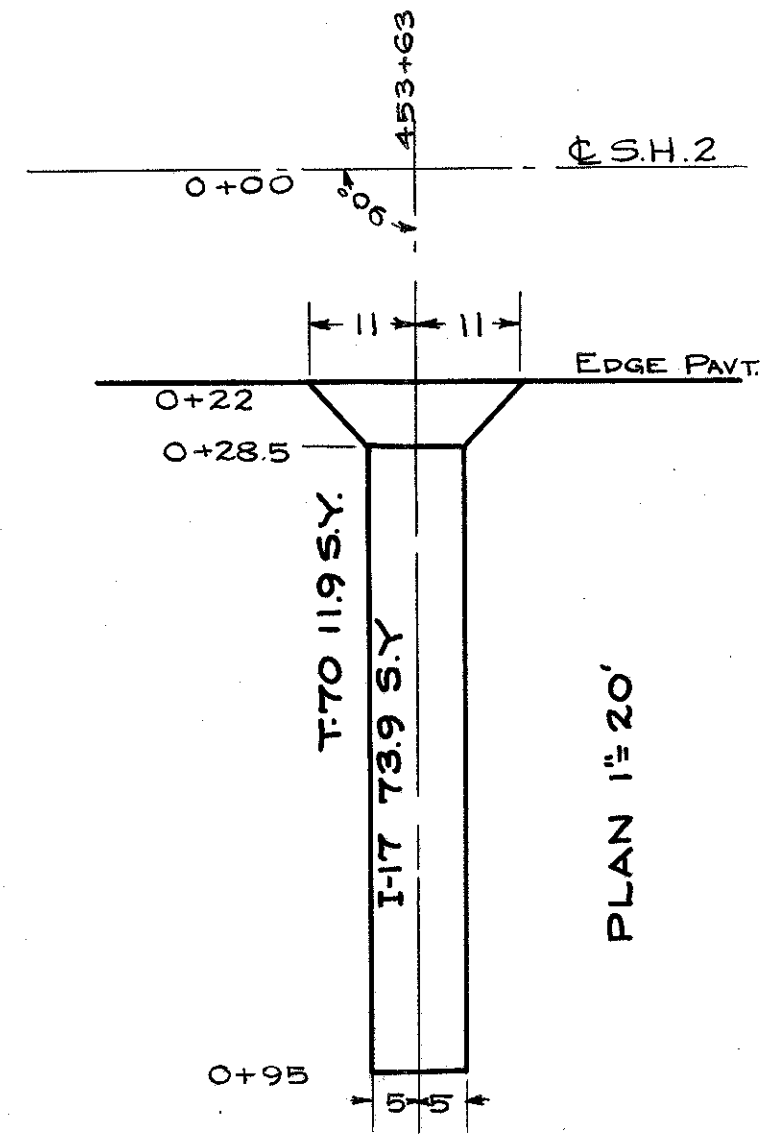


PROFILE 1"=5'

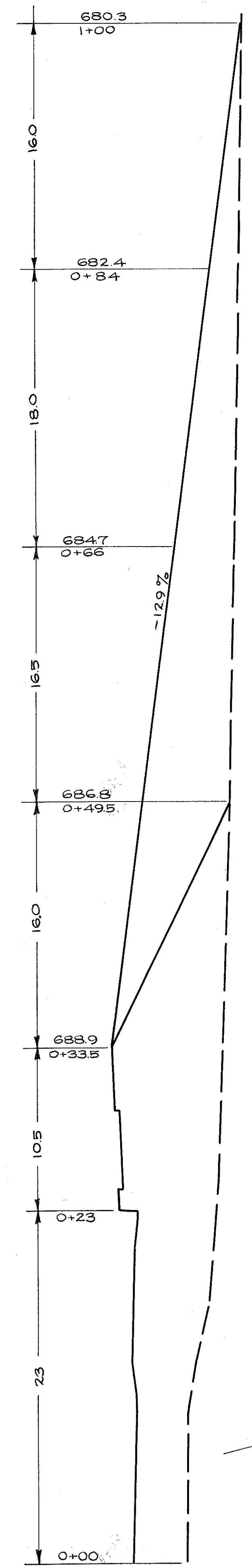
SECTIONS 1"=5'

DRIVE LT. STA. 453+63

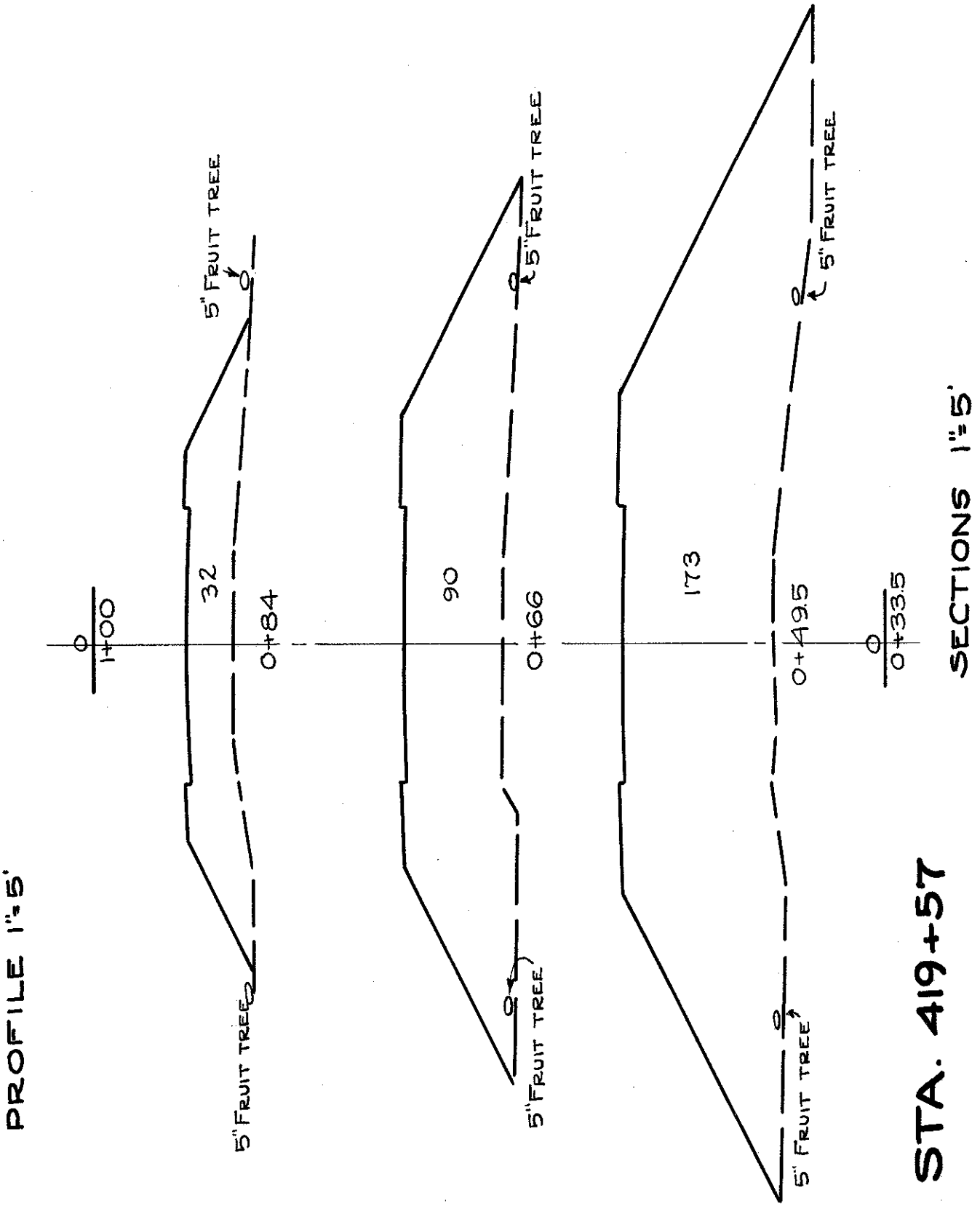
QUANTITIES
T-70(6) 11.9 SY
I-17(3) 61 C.Y.
I-11 DEDUCT 22 L.F.
Exc. 0 C.Y.
EMB. 86 C.Y.



PLAN 1"=20'



END AREA	CU. YDS.	CUT	FILL	EXC.	EMB.
0	0	0	9	0	9
0	0	32	0	0	41
0	0	90	0	0	80
0	0	173	0	0	51
TOTALS	0	0	0	0	181

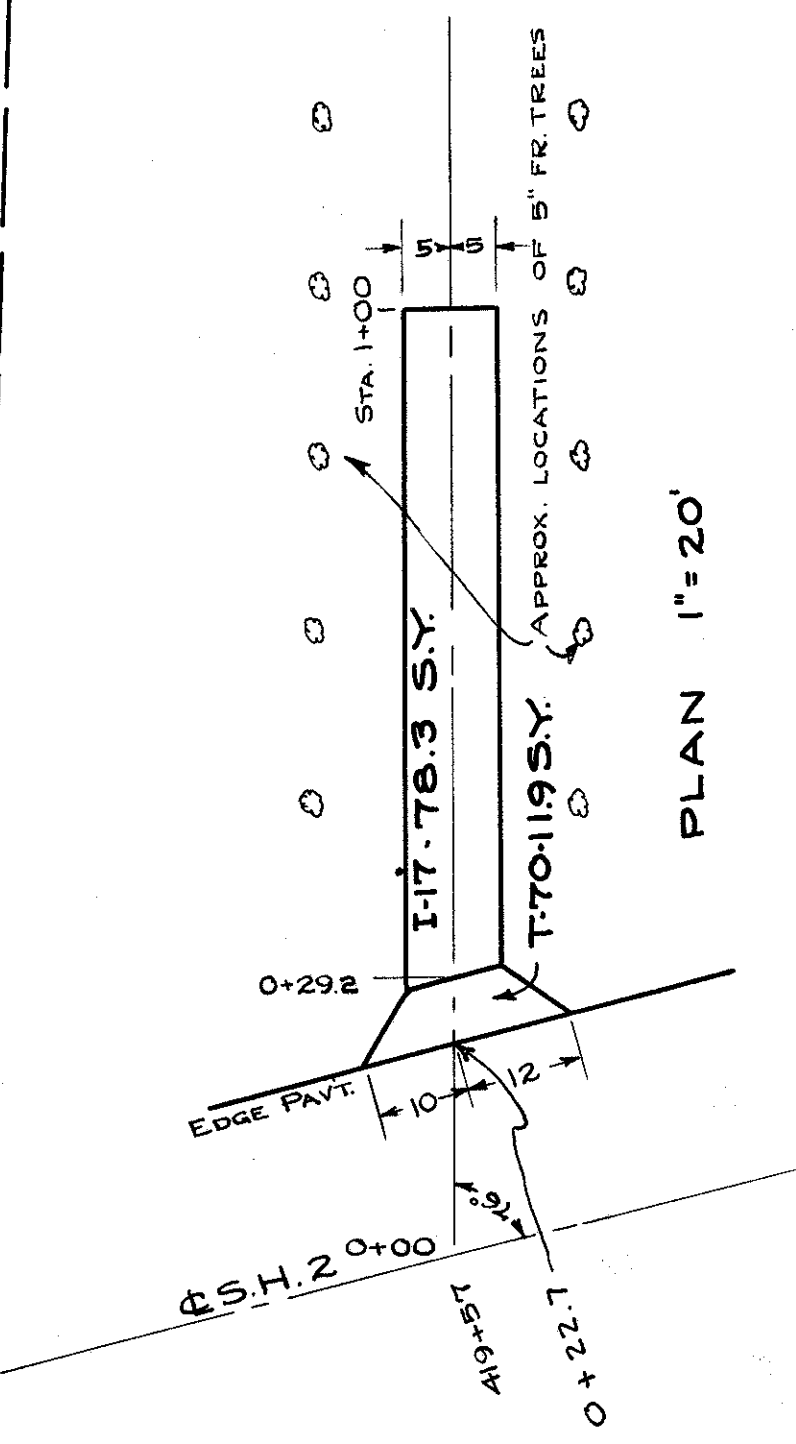


PROFILE 1"=5'

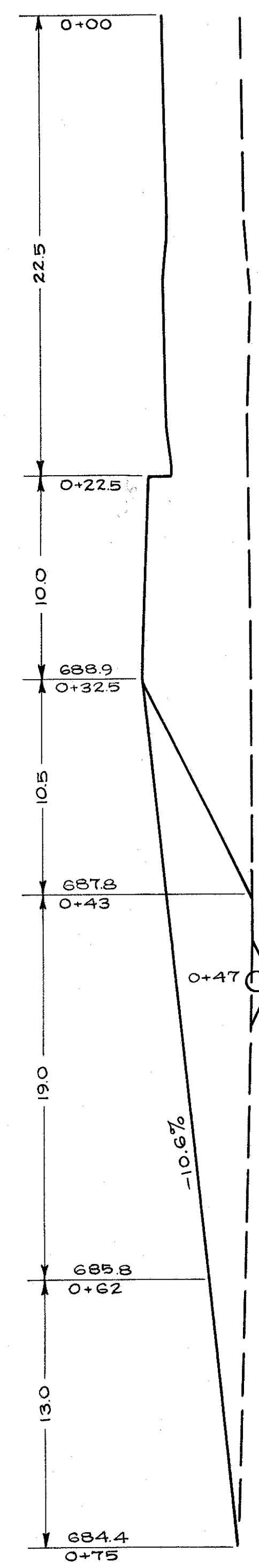
SECTIONS 1"=5'

DRIVE RT. STA. 419+57

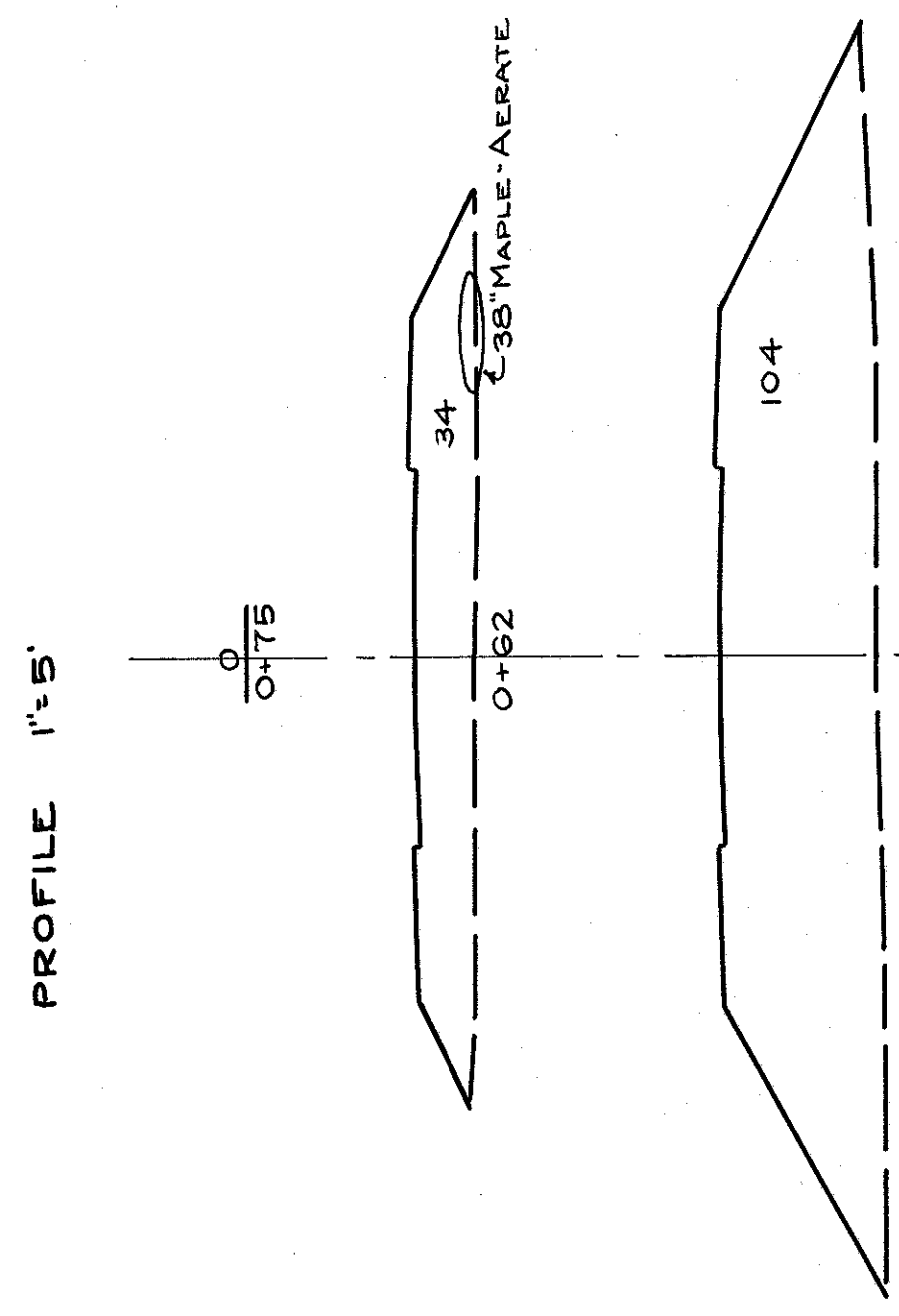
QUANTITIES
T-70(6) 11.9 SY
I-17(3) 66 C.Y.
I-11 DEDUCT 22 L.F.
Exc. 0 C.Y.
EMB. 181 C.Y.



PLAN 1"=20'



END AREA	CU. YDS.	CUT	FILL	EXC.	EMB.
0	0	0	8	0	8
0	0	34	0	0	49
0	0	104	0	0	20
0	0	0	0	0	0
TOTALS	0	0	0	0	77

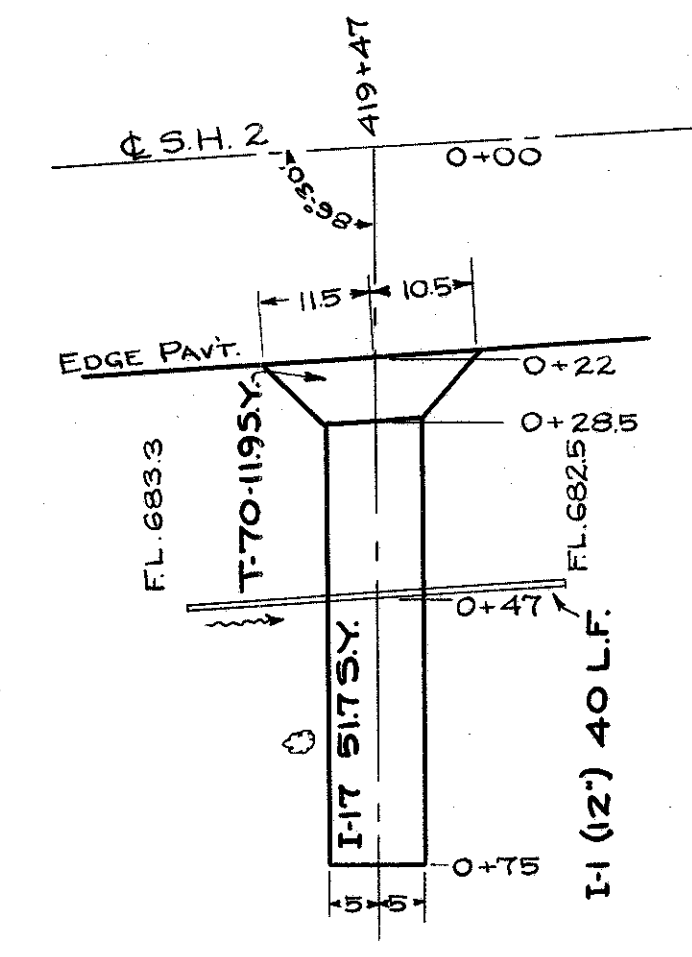


PROFILE 1"=5'

SECTIONS 1"=5'

DRIVE LT. STA. 419+47

QUANTITIES
T-70(6) 11.9 SY
I-17(3) 4.3 C.Y.
I-1(12) 40 L.F.
I-11 DEDUCT 22 L.F.
Exc. 0 C.Y.
EMB. 77 C.Y.



PLAN 1"=20'