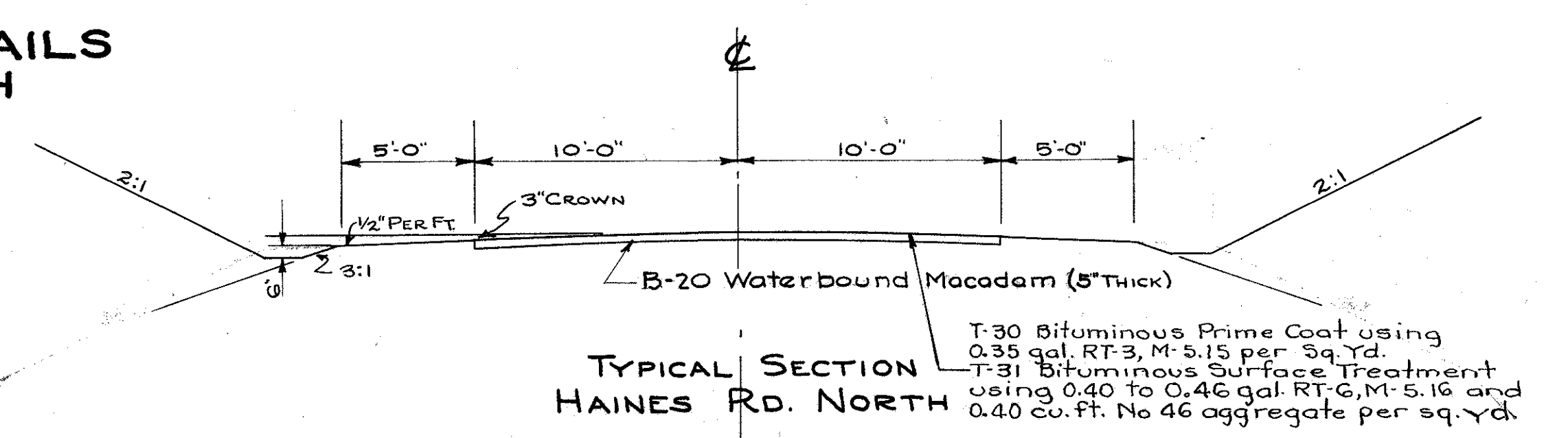
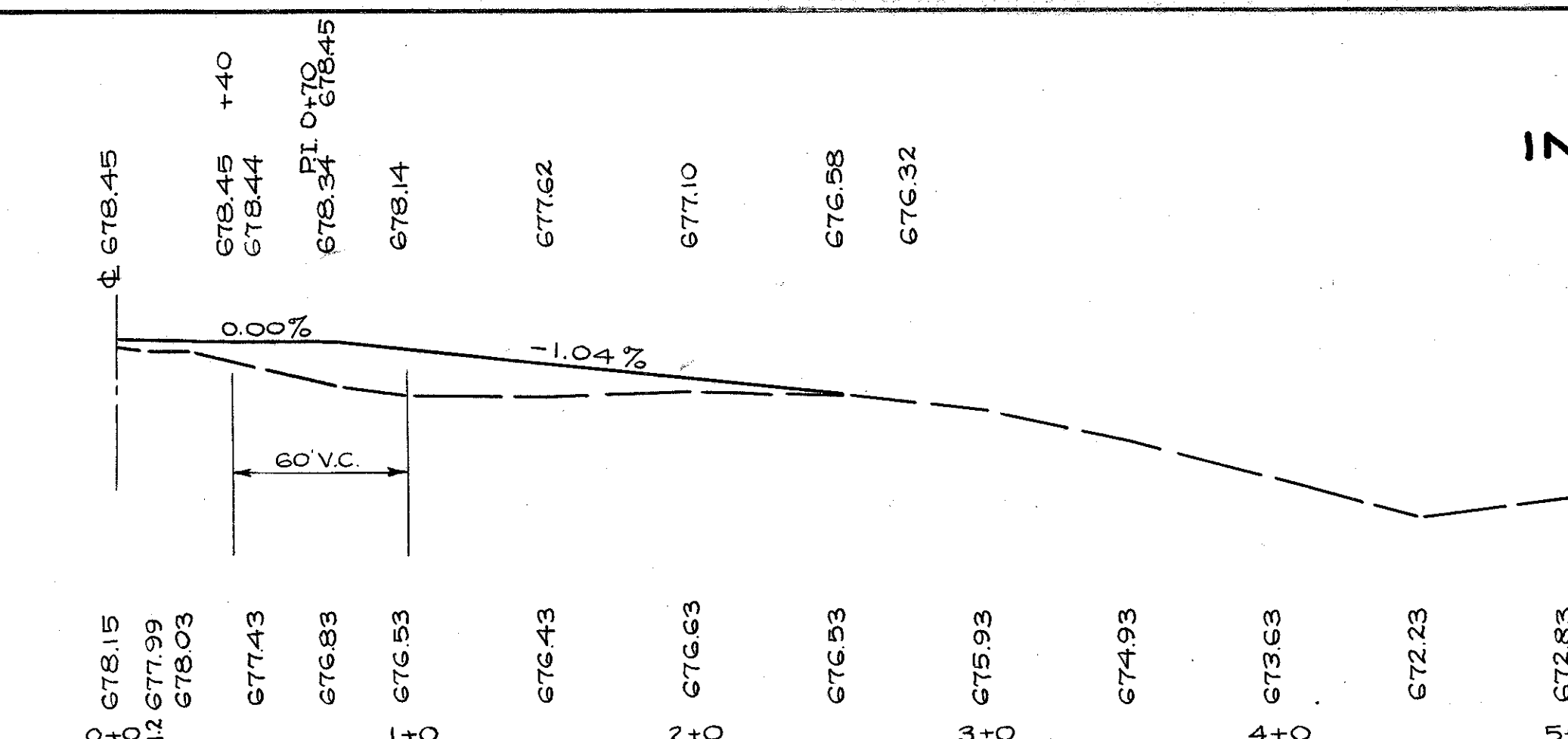


FED. RD. DIST. NO.	STATE	FED. AID PROJECT	FISCAL YEAR
10	OHIO	5-A(4)	1940

51
64

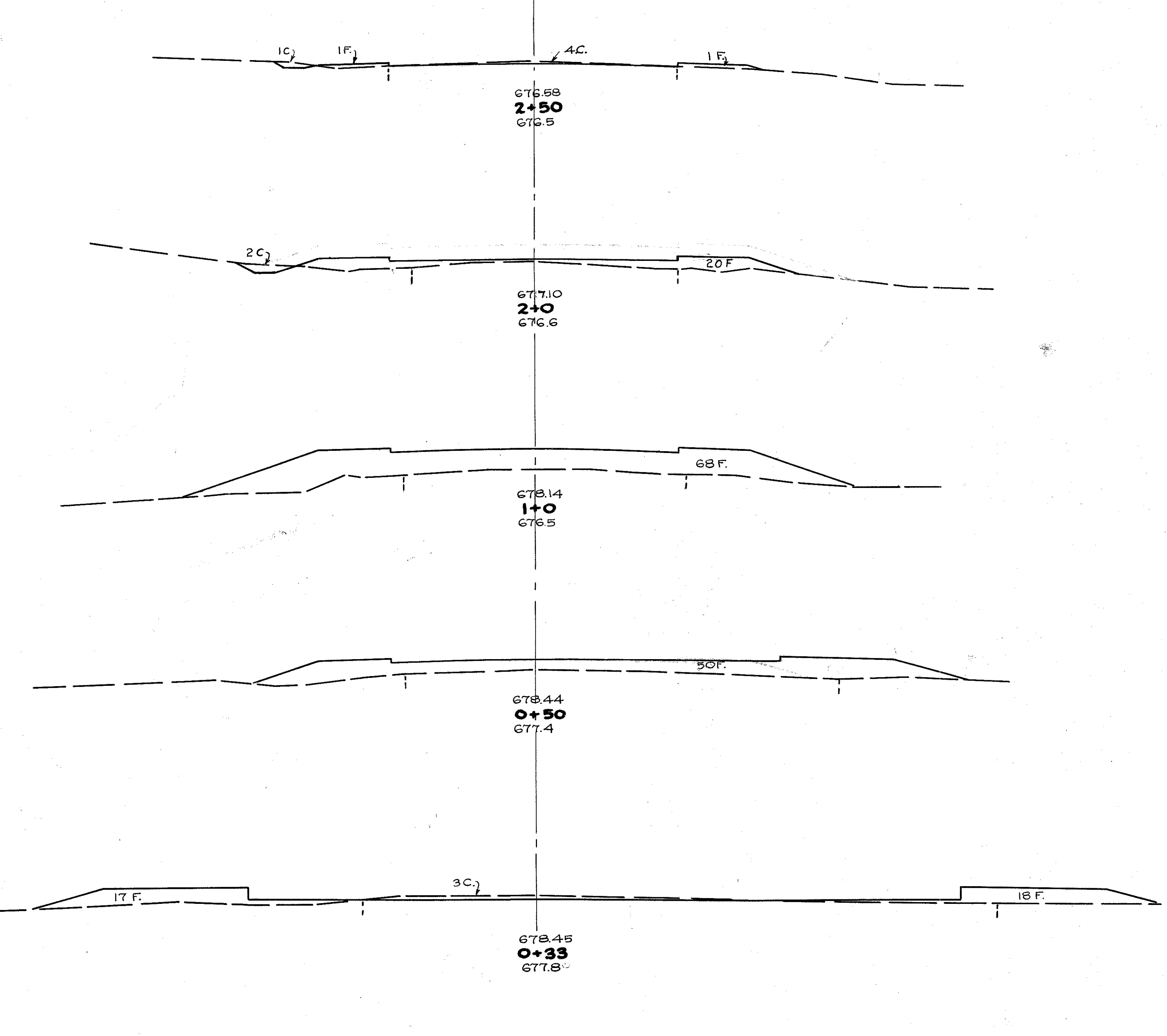
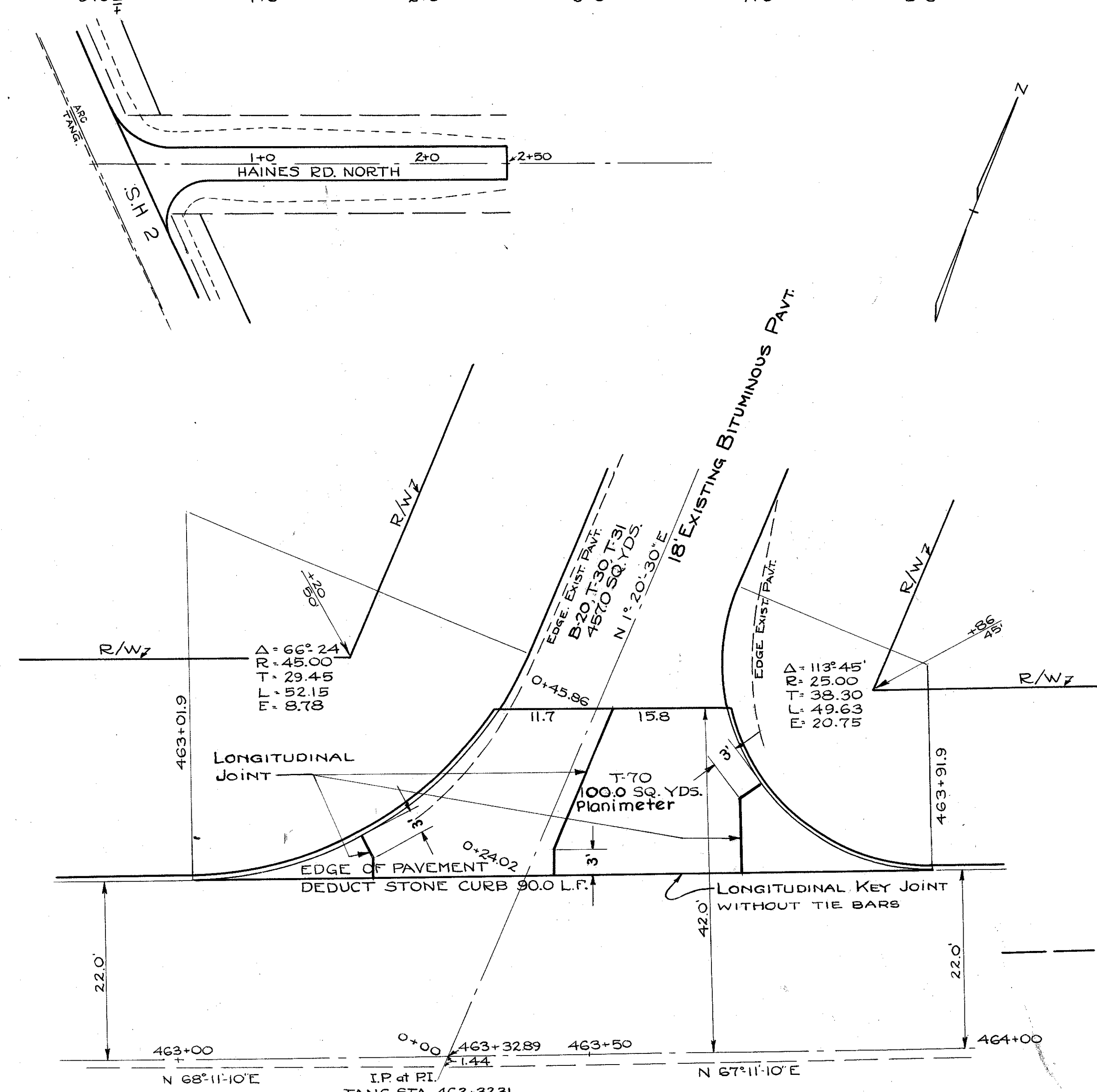
LAKE COUNTY
S.H. 2 SEC. Q (PT)

INTERSECTION DETAILS
HAINES ROAD NORTH
STA. 463+32.89



TYPICAL SECTION
HAINES RD. NORTH

T-30 Bituminous Prime Coat using 0.35 gal. RT-3, M-5.15 per sq. yd.
T-31 Bituminous Surface Treatment using 0.40 to 0.46 gal. RT-6, M-5.16 and 0.40 cu. ft. No 46 aggregate per sq. yd.



END AREA	CU. YDS.	
	CUT	FILL
5	2	
		6 20
2	20	
		4 163
0	68	
		0 109
0	50	
		1 27
3	35	
TOTALS	11	319

ESTIMATED QUANTITIES

T-70 6" PORTLAND CEMENT CONCRETE PAVEMENT	100.0 SQ. YDS.
B-20 5" WATERBOUND BASE COURSE	457.0 SQ. YDS.
I-11 DEDUCT STONE CURB	90.0 LIN. FT.
I-11 SANDSTONE CURB	79.0 LIN. FT.
T-30 BITUMINOUS PRIME COAT	457.0 SQ. YDS.
T-31 BITUMINOUS SURFACE TREATMENT	457.0 SQ. YDS.