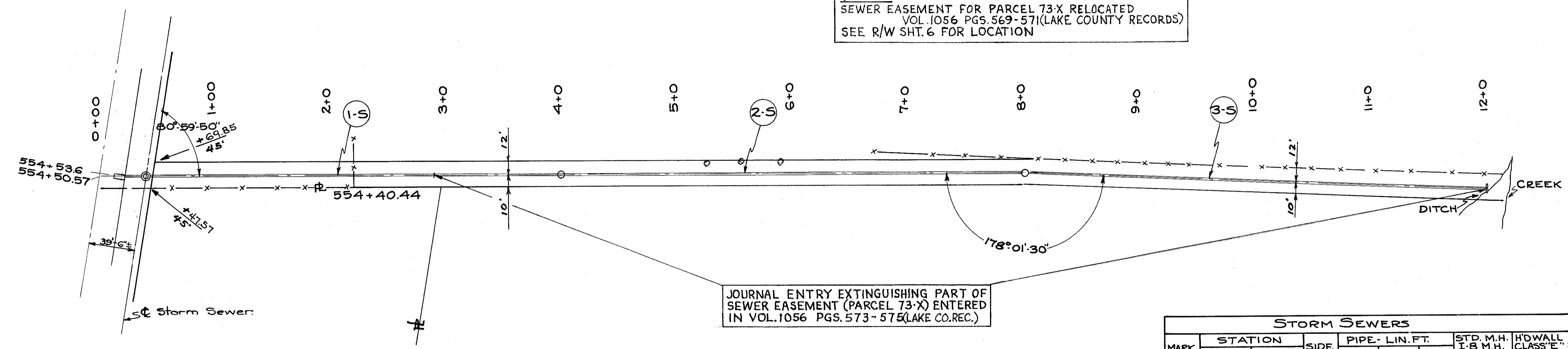


STORM SEWER OUTFALL
 STA. 554+50.57 SOUTH

NOTE:-
 SEWER EASEMENT FOR PARCEL 73-X RELOCATED
 VOL. 1056 PGS. 569-571 (LAKE COUNTY RECORDS)
 SEE R/W SHT. 6 FOR LOCATION



JOURNAL ENTRY EXTINGUISHING PART OF
 SEWER EASEMENT (PARCEL 73-X) ENTERED
 IN VOL. 1056 PGS. 573-575 (LAKE CO. REC.)

STORM SEWERS						
MARK	STATION		SIDE	PIPE - LIN. FT.	STD. M.H. 1-8 M.H. NO. I.E.A.	H' WALL CLASS "E" CONC. C.Y.
	FROM	TO				
1-S	0+19	4+0	☐	363		
2-S	4+0	8+0	☐	396		
3-S	8+0	12+0	☐	398		2.3
TOTAL				1157	2	2.3

QUANTITIES
 STRUCTURE EXCAVATION 7 C.Y.
 CHANNEL EXCAVATION 24 C.Y.

