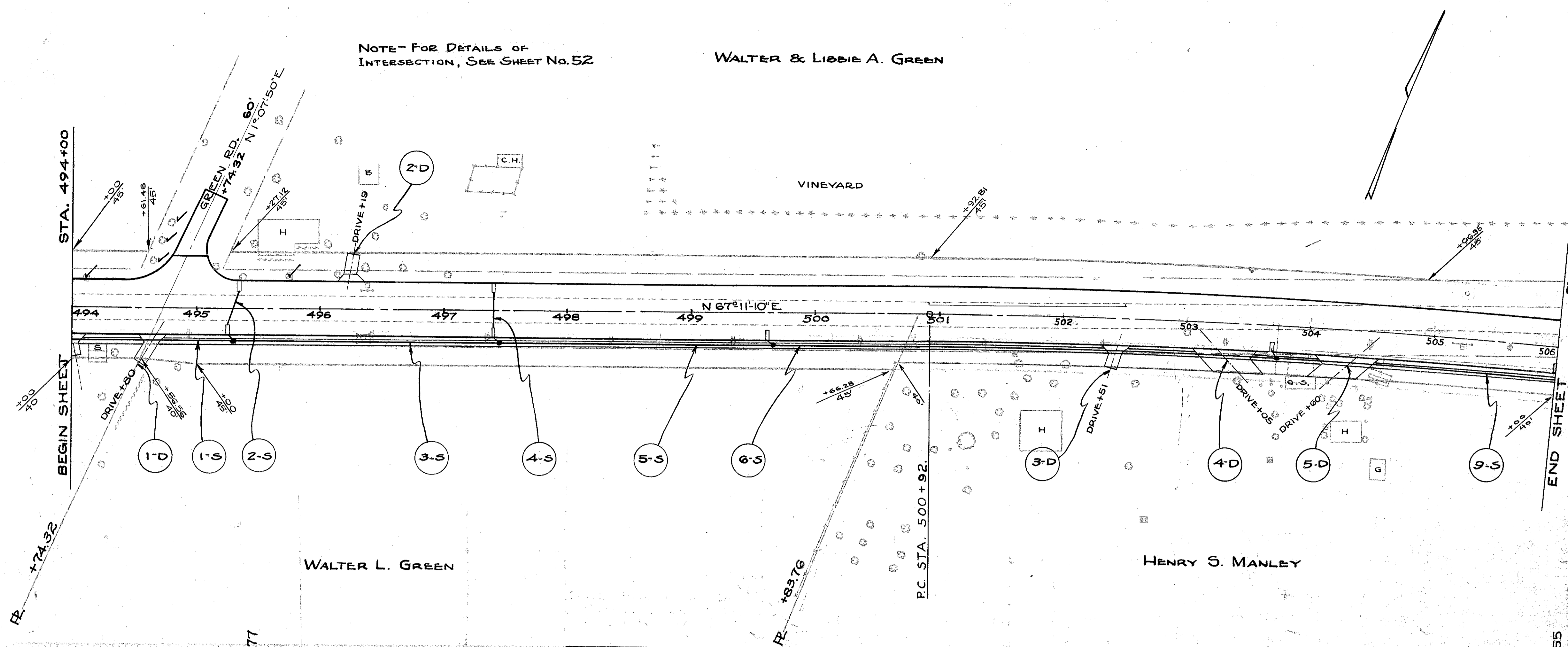


LAKE COUNTY  
S.H. 2 SEC. Q (PT.)

NOTE - FOR DETAILS OF INTERSECTION, SEE SHEET No. 52  
WALTER & LIBBIE A. GREEN



### STORM SEWERS

MARK	STATION		SIDE	PIPE LIN. FT.					CATCH	SPEC. M.H.	STD. MH #
	FROM	TO		24"	18"	15"	12"	10"			
1-S	494+00	495+30	RT	24	12	15	18	21	12	13-X	1
2-S	495+25	495+35		34					6		1
3-S	495+30	497+45	RT					212	6		1
4-S	497+40			33					6		2
5-S	497+45	499+65	RT					217	6		1
6-S	499+65	503+75	RT					406	6		1
9-S	503+75	506+00	RT	223							
<b>TOTALS</b>				223	67	128		835	24	6	4

\* See sheet 44 for details.

### DRIVES AND APPROACHES

MARK	STA.	SIDE	CU. YDS.		G T-70 DUCT. L.F. PIPE	
			AGG.	SO. YDS.	L.F.	CU. YDS.
1-D	494+80	RT.	1.3	11.9	22	
2-D	496+19	LT.	1.5	11.9	22	
3-D	502+51	RT.	1.1	11.9	22	
4-D	503+05	RT.	4.3	33.6	52	
5-D	504+60	RT.	4.3	33.6	52	
<b>TOTAL</b>			12.5	102.9	170	

### TREES TO BE REMOVED MARKED THUS ✓

STA.	SIDE	DIST. OUT	SIZE	KIND
494+10	LT.	22	56	MAPLE
495+76	LT.	23	20	SYCAMORE
494+64	LT.	37	13	APPLE
494+73	LT.	42	13	APPLE
494+80	LT.	68	13	APPLE
<b>TOTAL 5 TREES</b>				

### GUARD RAIL

STATION	SIDE	BUILD NEW	REMOVE STORE L.F.
496+32	496+41	RT.	30
496+34	496+42	LT.	8
505+10	505+32	RT.	16
<b>TOTAL 54</b>			

### REMOVAL OF EXISTING PAV'T.

STATION	FROM	TO	LGTH.	WDTH.	SO. YDS.
494+00	495+50		150	20	333.3
497+36	497+44		8	20	17.8
502+50	506+00		350	20	777.8
501+00	502+50		150	2	33.3
<b>TOTAL 1162.2</b>					

### REMOVAL OF EXISTING STRUCTURE

STATION	SIDE	DIST. OUT	OBJECT	QUANTITY
496+38	RT & LT	15.5	LEACH BASIN	2
505+23	RT & LT	5.6	LEACH BASIN	2
<b>TOTAL 4</b>				

### REPLACEMENT FOR DEFECTIVE AREAS & CROSSOVERS

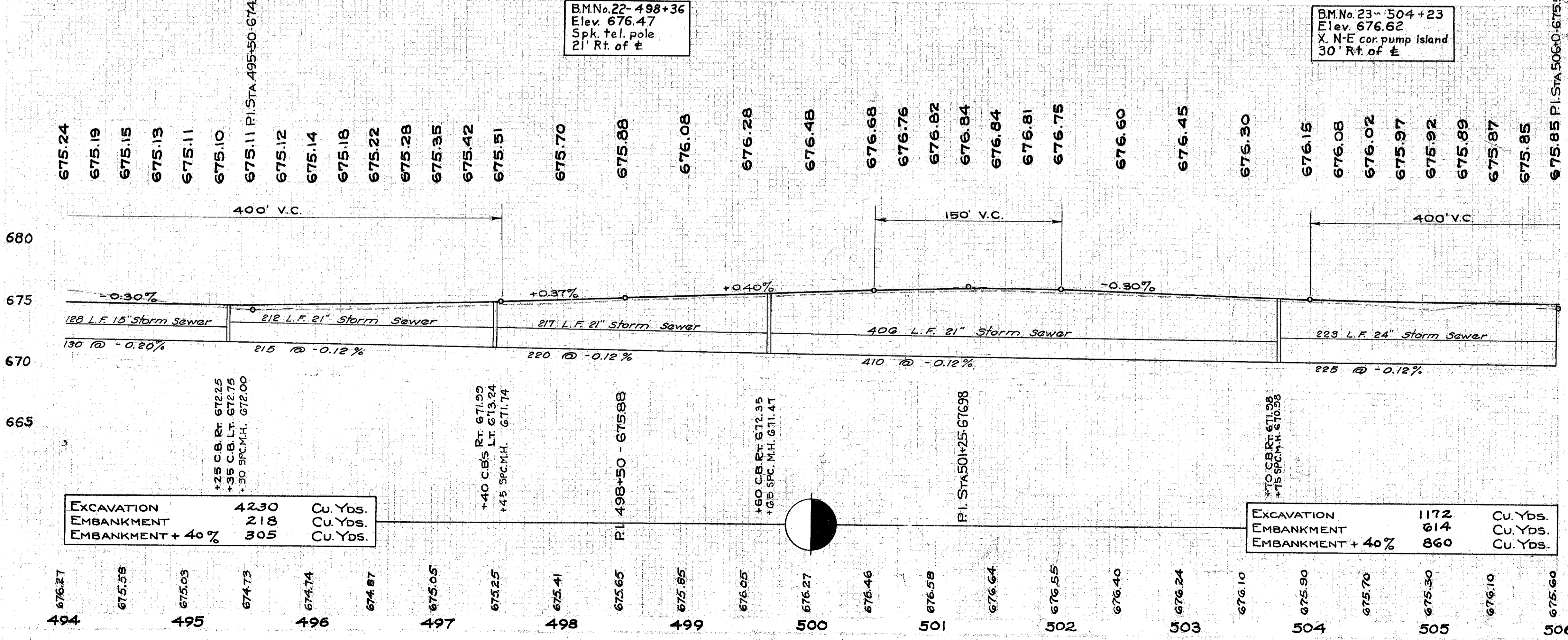
STATION	FROM	TO	LGTH.	WDTH.	SO. YDS.
497+36	497+44		8	20	17.8
<b>TOTAL 17.8</b>					

### SEALING ONLY EDGES OF EXISTING PAV'T & NEW BASE

STATION	FROM	TO	SIDE	LENGTH LIN. FT.
494+00	495+50		RT. & LT.	300
495+50	502+50		RT. & LT.	2800
495+50				20
502+50			LT.	18
501+00				2
502+50	506+00		RT & LT	700
<b>TOTAL 3840</b>				

### SIDEWALK

STATION	FROM	TO	SIDE	LGTH.	WDTH.	SO. FT.
494+07.3	494+56.7		RT.	49.4	4'-6"	2223
494+71.3	502+35.7		RT.	764.4	4'-6"	3439.8
502+50.2	503+11.2		RT.	61.0	4'-6"	274.5
503+55.7	504+09.2		RT.	53.5	4'-6"	240.7
504+53.1	506+00		RT.	146.3	4'-6"	658.4
<b>TOTAL 4885.7</b>						



EXCAVATION	4230	Cu. Yds.
EMBANKMENT	218	Cu. Yds.
EMBANKMENT + 40%	305	Cu. Yds.

EXCAVATION	1172	Cu. Yds.
EMBANKMENT	614	Cu. Yds.
EMBANKMENT + 40%	860	Cu. Yds.