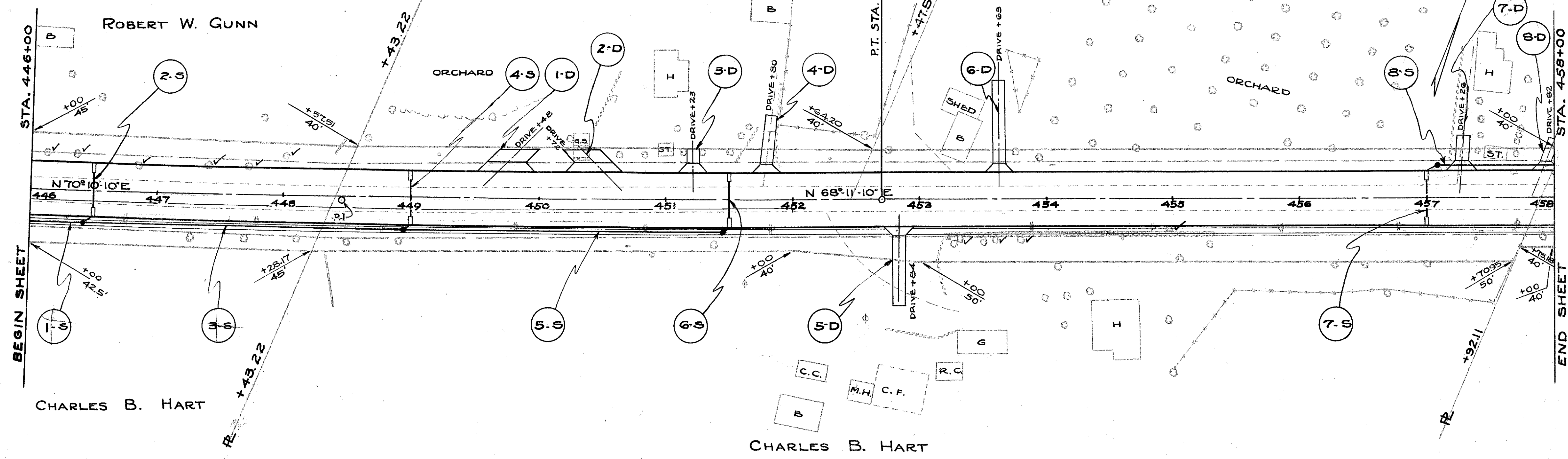
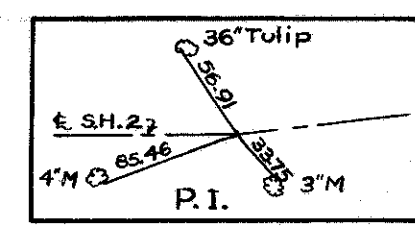


LAKE COUNTY
S.H. 2 SEC. Q (PT.)

PROPOSED CURVE DATA
 $\Delta = 1^{\circ}59' Lt.$
 $DD = 0^{\circ}14'$
 $TR = 24555.34'$
 $T = 425.05'$
 $L = 850.00'$
 $E = 3.68'$

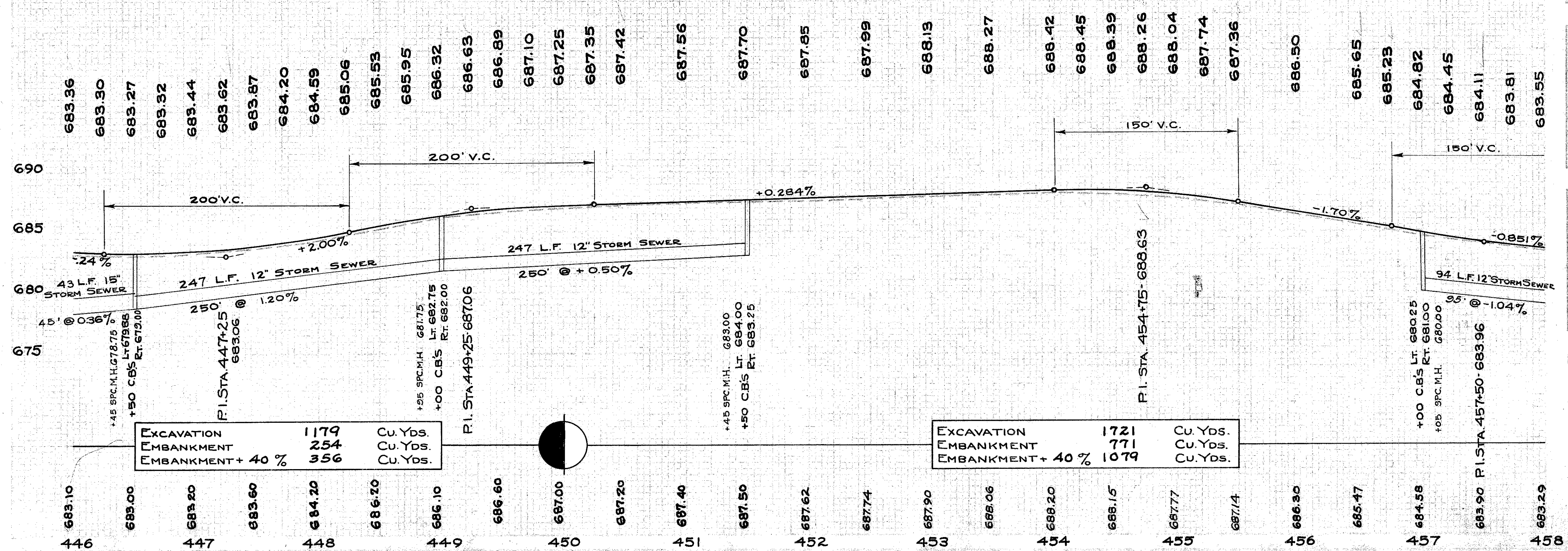


EXISTING CURVE DATA (PAV'T ONLY)
 $L = 1100'$
 $\Delta = 1^{\circ}50'$
 $TR = 5729.58'$
 $T = 99.18'$
 $E = 198.33'$

B.M. No. 11 - 446+35
 Elev. 685.17
 Spk. 36" Cucumber
 27' Lt. of E

B.M. No. 12 - 451+53
 Elev. 687.70
 Spk. 36" Poplar
 34' Lt. of E

B.M. No. 13 - 456+78
 Elev. 687.18
 Spk. tel. pole
 21' Rt. of E



EXCAVATION 1179 Cu. Yds.
 EMBANKMENT 254 Cu. Yds.
 EMBANKMENT + 40% 356 Cu. Yds.

EXCAVATION 1721 Cu. Yds.
 EMBANKMENT 771 Cu. Yds.
 EMBANKMENT + 40% 1079 Cu. Yds.

MARK	STATION		SIDE	PIPE LIN. FT.			CATCH BASINS	SPEC.
	FROM	TO		12"	15"	18"		
1-S	446+00	446+45	RT.	6	43			
2-S	446+50					33	2	
3-S	446+45	448+95	RT.	253				
4-S	449+00					33	2	
5-S	448+95	451+45	RT.	253				
6-S	451+50					33	2	
7-S	457+00					33	2	
8-S	457+05	458+00	LT.	100				
TOTAL				612	43	132	8	4

* See sheet 44 for details.

MARK	STA.	SIDE	CU. YDS. AGG.	6" T-70	DEDUCT SQ. YDS. L.F. CURB	DRIVE PIPE L.F.	SEE DETAIL SHEET NO.
2-D	450+72	LT.	3.2	26.3	42		
3-D	451+23	LT.	1.1	11.9	22		
4-D	451+80	LT.	3.7	11.9	22		
5-D	452+84	RT.	5.2	11.9	22	58	
6-D	453+63	LT.	6.1	11.9	22	57	
7-D	457+26	LT.	2.0	11.9	22		
8-D	457+82	LT.	2.0	11.9	22		
TOTAL			26.5	124.0	216		

STA.	SIDE	DIST. OF	SIZE	KIND
446+11	LT.	27'	18"	STUMP
446+34	LT.	25'	36"	PIGNUT
446+84	LT.	19'	20"	MAPLE
447+39	LT.	19'	28"	"
447+70	LT.	19'	20"	"
447+99	LT.	29'	32"	PIGNUT
453+33	RT.	30'	24"	APPLE
453+61	RT.	29'	12"	NUT
453+81	RT.	29'	28"	APPLE
454+98	RT.	25'	28"	MAPLE
TOTAL THIS SHEET 10 TREES				

STATION	SIDE	LGTH.	WDTH.	SQ. FT.
446+00	RT.	676.8	4-6	3045.6
452+13	RT.	508.7	4-6	2289.2
TOTAL 5334.8				

STATION	FROM	TO	LGTH.	WDTH.	SQ. YDS.
446+00	446+00	452+00	600	2.5	153.3
446+46	446+46	446+54	8	17.7	15.7
448+96	449+04	449+04	8	17.7	15.7
451+46	451+54	451+54	8	17.7	15.7
456+96	457+04	457+04	8	20	17.8
TOTAL 218.2					

STATION	FROM	TO	LGTH.	WDTH.	SQ. YDS.
446+46	446+46	446+54	8	17.7	15.7
448+96	449+04	449+04	8	17.7	15.7
451+46	451+54	451+54	8	17.7	15.7
456+96	457+04	457+04	8	20	17.8
TOTAL 64.9					

STATION	FROM	TO	SIDE	LENGTH LIN. FT.
446+00	458+00	RT. & LT.		4800
452+00		RT.		2
TOTAL 4802				