

REMOVE EXIST CONTROLLER  
STA 1+208.4, 11.6 m L

PROP. SIGNAL SUPPORT, P1  
TYPE TC-81.20 DES. 2, 7.2 m ARM WITH  
PEDESTRIAN SIGNALS AND PUSHBUTTONS  
STA 1+208.5, 13.0 m L

REMOVE EXIST. SIGNAL SUPPORT  
STA 1+208.0, 10.6 m L

REMOVE EXIST. PULLBOX  
STA 1+207.6, 11.3 m L

PROP. 450 mm PULLBOX, PB1  
STA 1+207.4, 12.9 m L

PROP. CONTROLLER WITH FOUNDATION,  
WORK PAD, TRAFFIC RESPONSIVE MASTER  
PHONE DROP, AND POWER SERVICE  
STA 1+207.4, 16.0 m L

PROP. 450 mm PULLBOX, PB7  
STA 1+207.1, 20 m L

PB3 SEE SHEET 61  
STA 1+151.1, 10.6 m L

SEE SHEET 65  
MATCH LINE STA 1+240.0

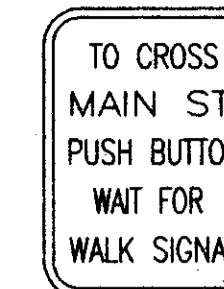
REMOVE & RELOCATE EX. SIGNS  
ON SIGNAL SUPPORT ON S.W.  
CORNER, TO PROP. SIGNAL SUPPORT P1

PROP. SIGNAL SUPPORT, P2,  
TYPE TC-81.20 DES. 2, 8.8 m ARM WITH  
PEDESTRIAN SIGNALS AND PUSHBUTTONS  
STA 1+213.7, 9.1 m R

REMOVE EXIST. SIGNAL SUPPORT  
STA 1+212.9, 8.6 m R

PROP. 330mm X 600mm PULLBOX, PB2  
STA 1+210.9, 10.6 m R

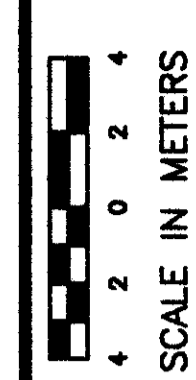
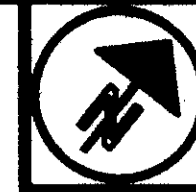
**PED SIGNS**



R-73A  
225mm x 300mm  
QTY = 4



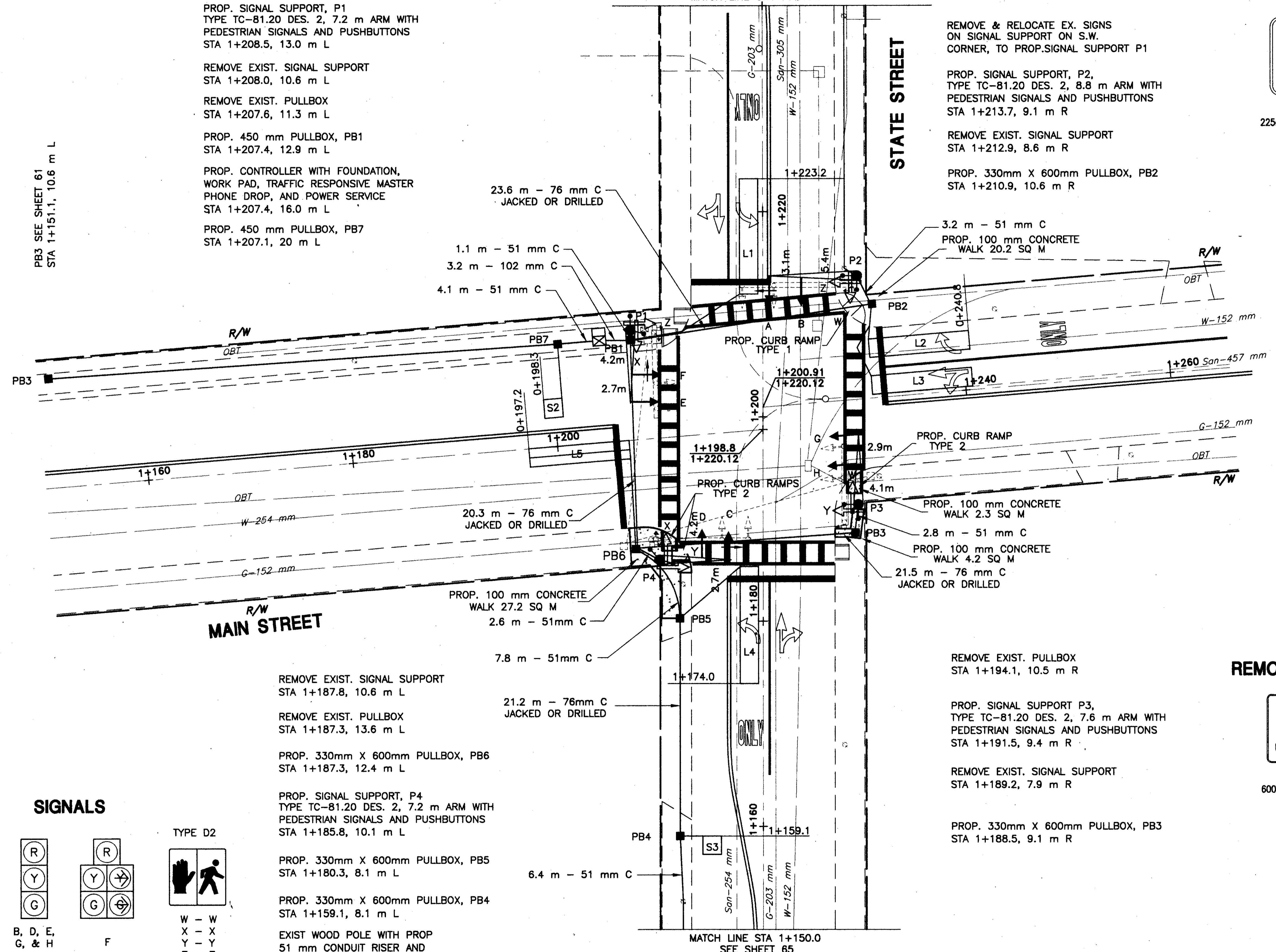
R-73A  
225mm x 300mm  
QTY = 4



CALCULATED  
CHECKED

TRAFFIC CONTROL PLAN  
STATE STREET & MAIN STREET

LAKE COUNTY  
LAK-20-22.916/VARIOUS



REMOVE EXIST. SIGNAL SUPPORT  
STA 1+187.8, 10.6 m L

REMOVE EXIST. PULLBOX  
STA 1+187.3, 13.6 m L

PROP. 330mm X 600mm PULLBOX, PB6  
STA 1+187.3, 12.4 m L

PROP. SIGNAL SUPPORT, P4  
TYPE TC-81.20 DES. 2, 7.2 m ARM WITH  
PEDESTRIAN SIGNALS AND PUSHBUTTONS  
STA 1+185.8, 10.1 m L

PROP. 330mm X 600mm PULLBOX, PB5  
STA 1+180.3, 8.1 m L

PROP. 330mm X 600mm PULLBOX, PB4  
STA 1+159.1, 8.1 m L

EXIST WOOD POLE WITH PROP  
51 mm CONDUIT RISER AND  
TC - 84.10 BOX TYPE SPLICE  
ENCLOSURE FOR LOOP  
LEAD-IN AND INTERCONNECT  
STA 1+152.7, 7.8 m L

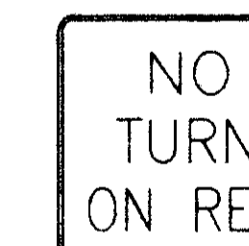
REMOVE EXIST. PULLBOX  
STA 1+194.1, 10.5 m R

PROP. SIGNAL SUPPORT P3,  
TYPE TC-81.20 DES. 2, 7.6 m ARM WITH  
PEDESTRIAN SIGNALS AND PUSHBUTTONS  
STA 1+191.5, 9.4 m R

REMOVE EXIST. SIGNAL SUPPORT  
STA 1+189.2, 7.9 m R

PROP. 330mm X 600mm PULLBOX, PB3  
STA 1+188.5, 9.1 m R

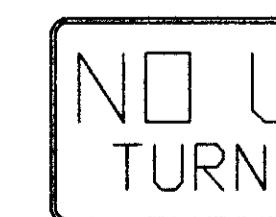
**REMOVE & REERECT SIGNS**



R-23  
600mm x 600mm  
QTY = 1



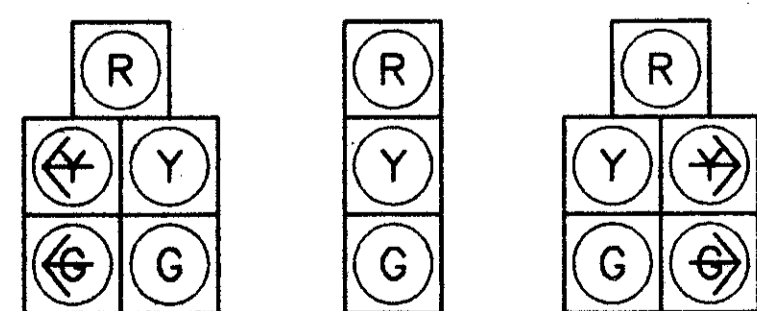
600mm x 600mm  
QTY = 1



RP-123  
600mm x 450mm  
QTY = 1

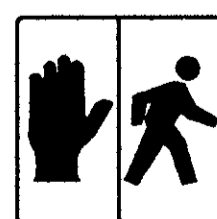
REMOVE FROM STA. 1+208.5  
& REERECT ON MAST ARM OF  
SIG. SUPPORT P1 STA. 1+208.5

**SIGNALS**



A & C  
B, D, E,  
G, & H  
F  
ALL HEADS ARE 300mm POLYCARBONATE

TYPE D2



W - W  
X - X  
Y - Y  
Z - Z