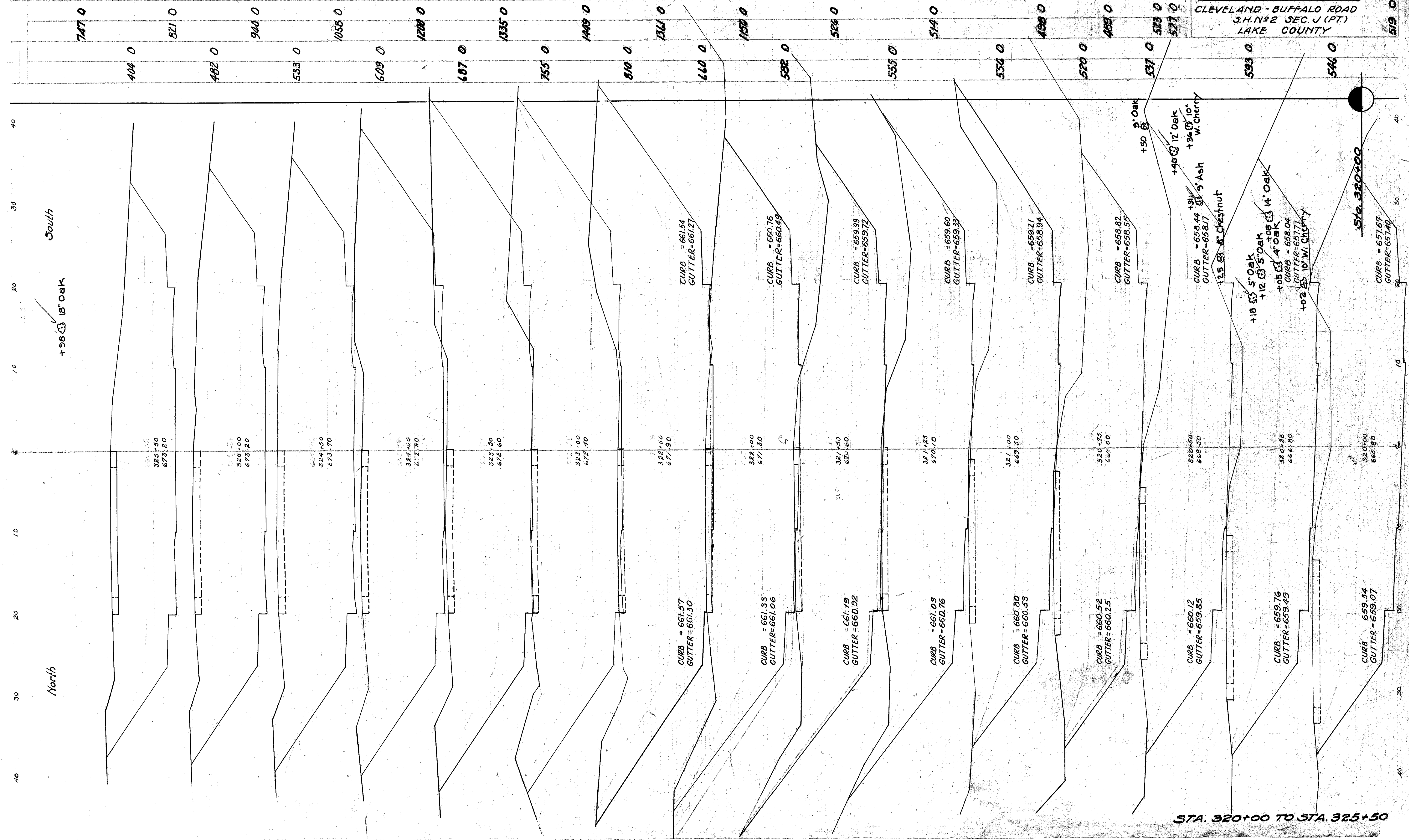


FED. RD. DIST. No.	STATE	FED. AID PROJECT	FISCAL YEAR
10	OHIO	4(4)	1939

31
68

CLEVELAND - BUFFALO ROAD
S.H. No. 2 SEC. J (PT.)
LAKE COUNTY



South
+98 18" Oak

North

Sta. 320+00

STA. 320+00 TO STA. 325+50

CURB = 661.54
GUTTER = 661.21

CURB = 660.76
GUTTER = 660.49

CURB = 659.99
GUTTER = 659.72

CURB = 659.60
GUTTER = 659.33

CURB = 659.21
GUTTER = 658.94

CURB = 658.82
GUTTER = 658.55

CURB = 658.44
GUTTER = 658.17

CURB = 658.04
GUTTER = 657.77

CURB = 657.67
GUTTER = 657.40

325+50
673.20

324+50
673.20

324+50
673.70

324+00
672.90

323+50
672.60

323+00
672.40

322+50
671.90

322+00
671.30

321+50
670.60

321+25
670.10

321+00
669.50

320+75
668.00

320+50
668.50

320+25
666.80

320+00
665.90

CURB = 661.57
GUTTER = 661.30

CURB = 661.33
GUTTER = 661.06

CURB = 661.19
GUTTER = 660.92

CURB = 661.03
GUTTER = 660.76

CURB = 660.80
GUTTER = 660.53

CURB = 660.52
GUTTER = 660.25

CURB = 660.12
GUTTER = 659.85

CURB = 659.76
GUTTER = 659.49

CURB = 659.34
GUTTER = 659.07

+50 5" Oak

+48 12" Oak

+36 10" W. Cherry

+31 5" Ash

+25 8" Chestnut

+18 5" Oak

+12 5" Oak

+08 4" Oak

+02 10" W. Cherry