

**PAV'T REMOVAL & REPLACEMENT**

From	To	Lin. Ft.	Width	MON. BRICK PAV'T. REMOVAL Sq. Yds.	SEAL ONLY 1" TO 1.5" LIN. FT.	8" REINF. CONC. BASE REPLACE 8" V.S.
385+95	386+05	10	20	22.2	40	22.2
388+45	388+55	10	20	22.2	40	22.2
391+45	391+55	10	20	22.2	40	22.2
396+95	397+05	10	20	22.2	40	22.2
399+95	400+05	10	20	22.2	40	22.2
<b>TOTALS</b>				<b>111.0</b>	<b>200</b>	<b>111.0</b>

**TREES TO BE REMOVED**

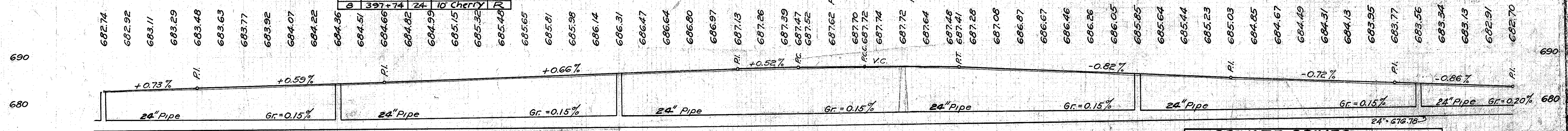
No.	Station	Dist. from	Size & Kind	Side Cor/L
1	386+30	32	36" Maple	L
2	389+71	19	36" W. Ch.	R
3	389+98	31	48" W. Ch.	L
4	391+26	32	15" W. Ch.	R
5	392+94	30	9" Pear	R
6	393+11	31	9" Pear	R
7	393+27	32	9" Pear	R
8	397+74	24	10" Cherry	R

**DEFECTIVE PAVING AREAS**

Station	From	To	No. of Sq. Ft.	Sq. Ft.	Seal Only E10 Lin. Ft.
386+30	387+12	10'	10'	1640	40
392+68	392+78	10	10	100	20
393+25	393+35	10	10	100	20
394+07	394+17	10	10	100	20
<b>TOTAL</b>				<b>1940</b>	<b>100</b>

B.M. # 49 Sta. 389+75  
Spike in 30" W. Cherry  
35' to R. of E.  
Elev. = 687.63

B.M. # 50 Sta. 395+23  
Spike in 30" poplar  
27' to R. of E.  
Elev. = 687.42



**STRUCTURES 20' SPAN & UNDER**

Item No.	Station	Side Retard.	Structure	See Detail Sheet
1-C	386+00	xover	12" Rdwy. Culvert	60
2-C	388+50	xover	12" Rdwy. Culvert	60
3-C	391+50	xover	12" Rdwy. Culvert	60
4-C	397+00	xover	12" Rdwy. Culvert	61
5-C	400+00	xover	12" Rdwy. Culvert	61

**ROADWAY DRAIN G.E.**

Item No.	Station		Pipe	Std. Location
	From	To		
1-D	386+00	388+50	36" 30' 27"	1/4" M.H. of Str. 1/2" 1/2"
2-D	388+50	391+50	36"	1/4" M.H. of Str. 1/2" 1/2"
3-D	391+50	397+00	36"	1/4" M.H. of Str. 1/2" 1/2"
5-D	397+00	400+00	36"	1/4" M.H. of Str. 1/2" 1/2"
6-D	400+00	401+00	36"	1/4" M.H. of Str. 1/2" 1/2"
<b>Total</b>				<b>1482</b>

**PRIVATE DRIVES**

Item No.	Station	Side	Cu. Yds. Exc. Emb.	Agg. Cu. Yds.	6" T. 70 S.Y.	Deduct Curb
1-A	386+80	R	2 0	2	12	22
2-A	387+16	R	2 0	2	12	22
3-A	388+99	R	3 0	2	12	22
4-A	389+53	L	3 2.5	4	12	22
5-A	389+97	R	2 0	2	12	22
6-A	390+08	R	3 0	2	12	22
7-A	391+60	L	2 0	2	12	22
8-A	394+81	R	3 0	2	12	22
9-A	396+46	R	2 0	2	12	22
<b>TOTAL</b>				<b>17 2.5</b>	<b>16</b>	<b>84 154</b>

Excavation	853	Cubic Yards
Embankment	1437	" "
Emb +30%	1868	" "

