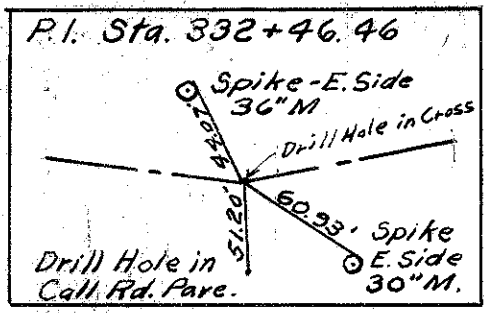


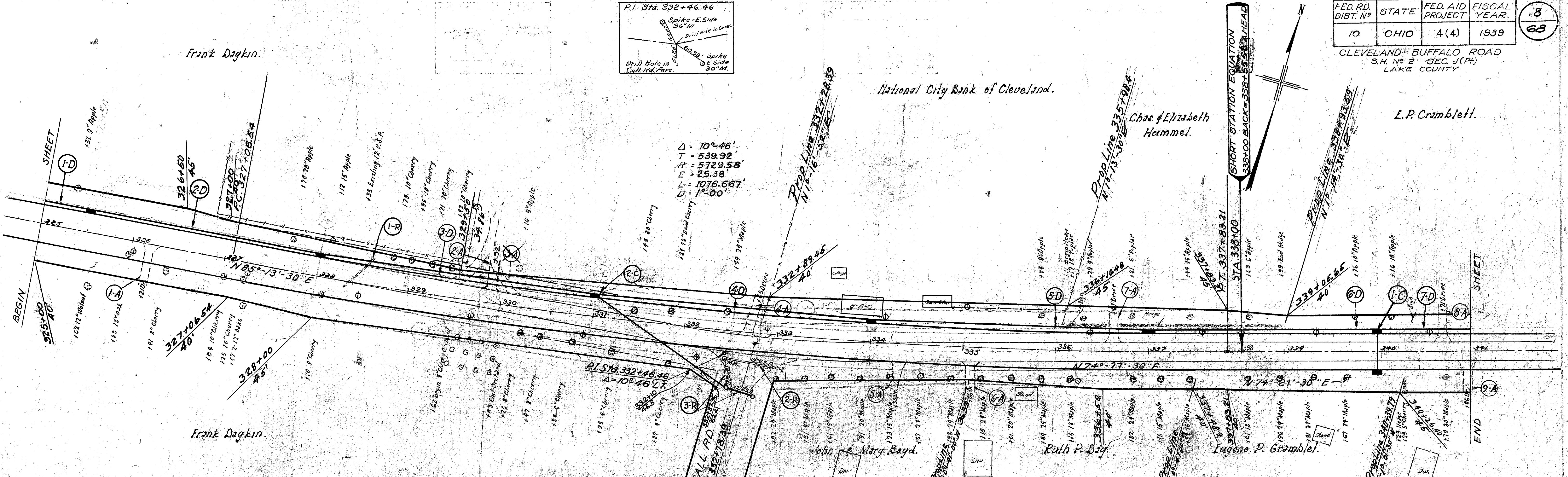
CLEVELAND-BUFFALO ROAD
S.H. N° 2 SEC. J(P)
LAKE COUNTY



National City Bank of Cleveland.

Chas. & Elizabeth Hummel.

L.P. Cramblett.



B.M. #37 Sta. 327+26
Spike in roof twin 10" W. Cherry
47' to R. of E.
Elev. = 672.05

EXISTING STRUCTURES
1-R Sta. 328+35 Remove & Dispose of 12' x 45' V.S.R. Culv.
2-R Call Rd. Rt. Remove & Dispose of 12' x 62' V.S.P. Culv. & MH.
3-R Call Rd. Rt. Remove & Dispose of 12' x 66' V.S.R. & Inlets

B.M. #38 Sta. 333+02
Spike in roof 24" maple
38' to R. of E.
Elev. = 675.27

B.M. #39 Sta. 339+68
Spike in roof 30" maple
26' to R. of E.
Elev. = 678.65

TREES TO BE REMOVED
SEE SHEET NO 46

Item No.	Station	Species	Size	Location
1-D	325+00	Cherry	10"	47' to R. of E.
2-D	328+00	Cherry	12"	47' to R. of E.
3-D	331+00	Cherry	12"	47' to R. of E.
4-D	334+00	Cherry	12"	47' to R. of E.
5-D	337+00	Cherry	12"	47' to R. of E.
6-D	340+00	Cherry	12"	47' to R. of E.
7-D	341+00	Cherry	12"	47' to R. of E.
TOTAL				7

ROADWAY DRAINAGE

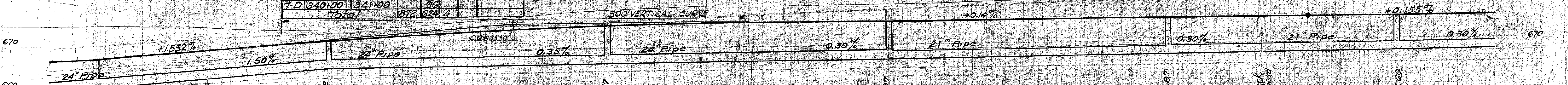
Item No.	Station	Pipe	C.B.	Location
1-D	325+00	24"	128	331+00
2-D	325+50	24"	1	331+00
3-D	328+00	24"	1	331+00
4-D	331+00	24"	1	331+00
5-D	334+00	24"	1	331+00
6-D	337+00	24"	1	331+00
7-D	340+00	24"	1	331+00
TOTAL		872	624	4

PAVEMENT REMOVAL

From Station	To Station	Width	Length	Monolithic Brick S.Y.
325+00	341+00	20	1545	3433.3
TOTAL				3433.3

PRIVATE DRIVES

Item No.	Station	Side	Exc.	Emb.	Agg. Cuts	Item No.	Station	Side	Exc.	Emb.	Agg. Cuts	
22	326+21	R	5	0	2.5	6-A	335+06	R	6	0	2.5	
22	329+52	L	3	0	2	7-A	336+61	L	5	0	2.5	
22	330+56	L	4	0	2	8-A	340+71	L	5	0	2.5	
22	332+65	L	5	0	2.5	9-A	340+96	R	5	0	2.5	
22	334+30	R	5	0	2.5	TOTAL			39	0	19.5	
TOTAL											96	176



STRUCTURES 20' SPAN & UNDER

Item No.	Station	Side	Structure	See Detail/Sheet
1-C	340+00	Over	12" Reting Culvert	56
2-C	331+00	12" Reting Culvert	52	

SURFACE ELEVATIONS

Station	Elevation
325	673.2
326	673.3
327	673.2
328	672.8
329	673.0
330	673.3
331	673.7
332	674.1
333	674.54
334	674.96
335	675.39
336	675.80
337	676.13
338	676.42
339	676.67
340	676.82
341	677.01
342	677.12
343	677.19
344	677.22
345	677.24
346	677.37
347	677.47
348	677.56
349	677.66
350	677.70
351	677.77
352	677.83
353	677.92
354	678.04
355	678.14
356	678.18
357	678.26
358	678.27
359	678.38
360	678.42
361	678.58
362	678.66
363	678.70
364	678.71
365	678.78
366	678.73
367	678.72
368	678.59
369	678.58
370	678.44
371	678.32
372	678.14
373	677.98
374	677.79
375	677.65
376	677.56

Excavation - 8,588 Cubic Yards
Embankment - 0
Emb +30% - 0