

John C. Perry.

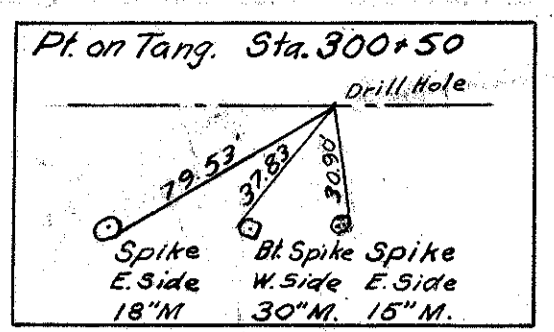
Mike & Bertha Garcia.

John L. & H. Blanche Golding.

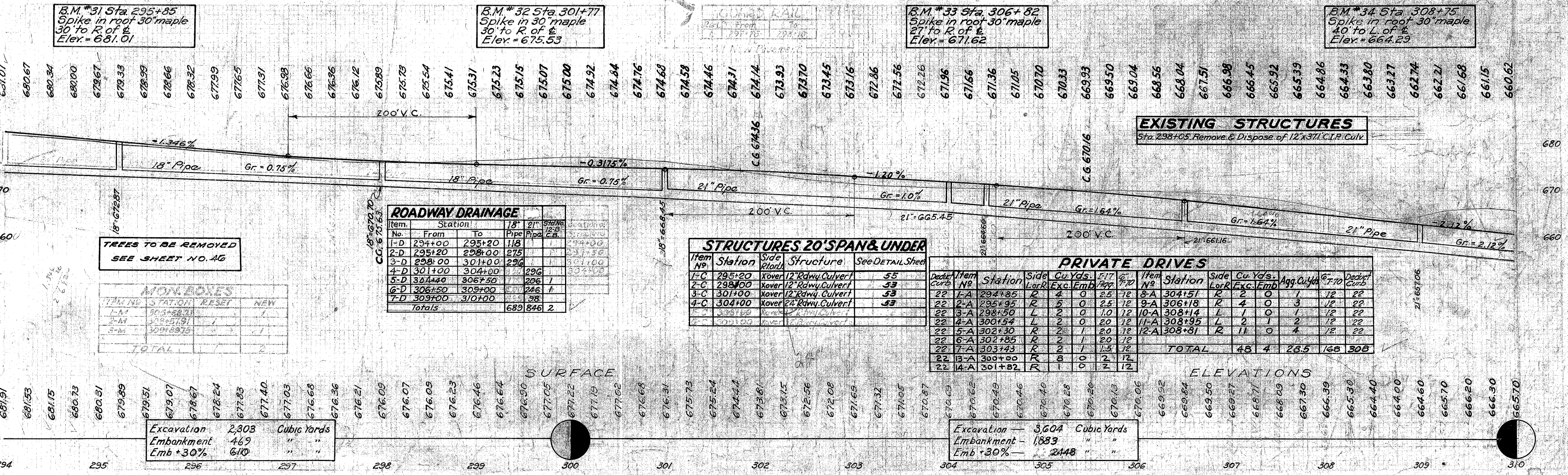
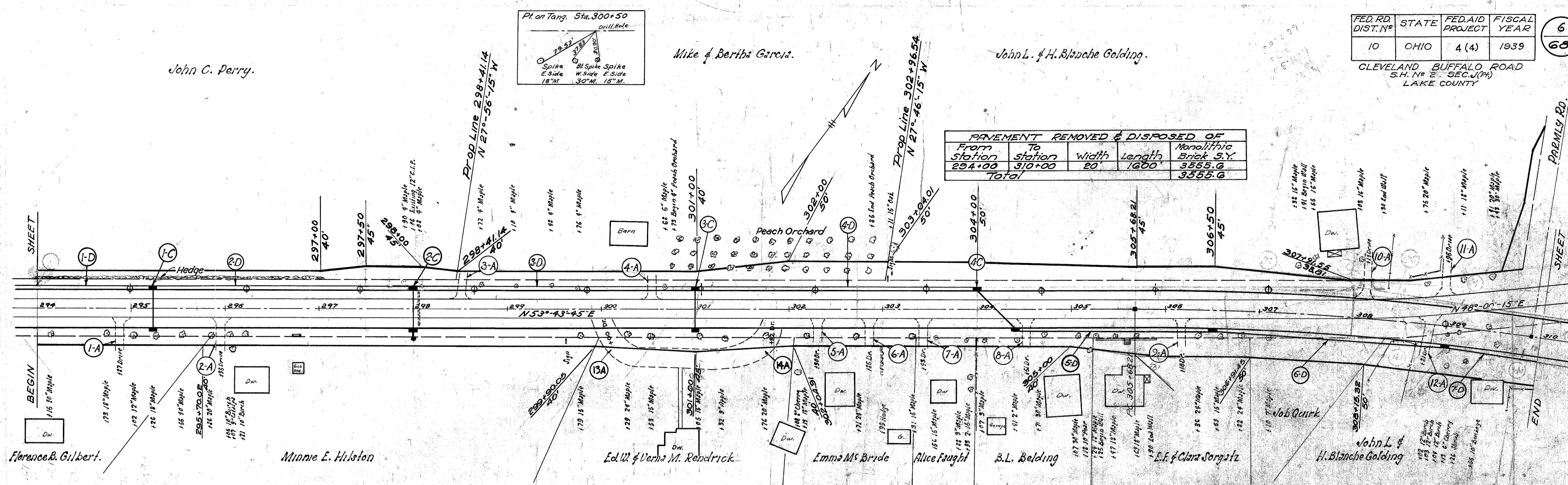
FED. RD. DIST. NO.	STATE	FED. AID PROJECT	FISCAL YEAR
10	OHIO	4 (4)	1939

CLEVELAND BUFFALO ROAD
S.H. No. 2 SEC. J (PA)
LAKE COUNTY

6
68



From Station	To Station	Width	Length	Monolithic Brick S.Y.
294+00	310+00	20	1600	3555.6
Total				3555.6



B.M. #31 Sta. 295+85
Spike in root 30' maple
30' to R of E
Elev. = 681.01

B.M. #32 Sta. 301+77
Spike in 30' maple
30' to R of E
Elev. = 675.53

B.M. #33 Sta. 306+82
Spike in root 30' maple
27' to R of E
Elev. = 671.62

B.M. #34 Sta. 308+75
Spike in root 30' maple
40' to L of E
Elev. = 664.23

Item No.	Station	18" Pipe	21" Pipe	STATIONING
1-D	294+00	295+20	118	294+00
2-D	295+20	298+00	275	297+50
3-D	298+00	301+00	296	301+00
4-D	301+00	304+00	296	304+00
5-D	304+00	306+50	206	306+50
6-D	306+50	309+00	246	309+00
7-D	309+00	310+00	98	310+00
Totals			689	846

Item No.	Station	Side	Structure	See Detail Sheet
1-C	295+20	Xover	12' Rdwy. Culvert	55
2-C	298+00	Xover	12' Rdwy. Culvert	53
3-C	301+00	Xover	12' Rdwy. Culvert	53
4-C	304+00	Xover	24' Rdwy. Culvert	53

Item No.	Station	Side	Cu. Yds.	F. 17	6.70	Item No.	Station	Side	Cu. Yds.	Agg. Cu. Yds.	6.70	Deduct	
22	1-A 294+85	R	4	0	25	12	8-A 304+51	R	2	0	1	12	22
22	2-A 295+95	R	5	0	25	12	9-A 306+18	R	4	0	3	12	22
22	3-A 298+50	L	2	0	10	12	10-A 308+14	L	1	0	1	12	22
22	4-A 300+54	L	2	0	20	12	11-A 308+95	L	2	1	2	12	22
22	5-A 302+30	R	2	1	20	12	12-A 308+81	R	11	0	4	12	22
22	6-A 302+85	R	2	1	20	12	TOTAL						
22	7-A 303+43	R	2	1	15	12			48	4	28.5	168	308
22	3-A 300+00	R	8	0	2	12							
22	4-A 301+82	R	1	0	2	12							

TREES TO BE REMOVED
SEE SHEET NO. 46

ITEM NO.	STATION	RESET	NEW
1-M	295+50		1
2-M	298+50		1
3-M	301+50		1
TOTAL			3

Excavation	2,303	Cubic Yards
Embankment	469	" "
Emb +30%	610	" "

Excavation	3,604	Cubic Yards
Embankment	1,883	" "
Emb +30%	2,448	" "