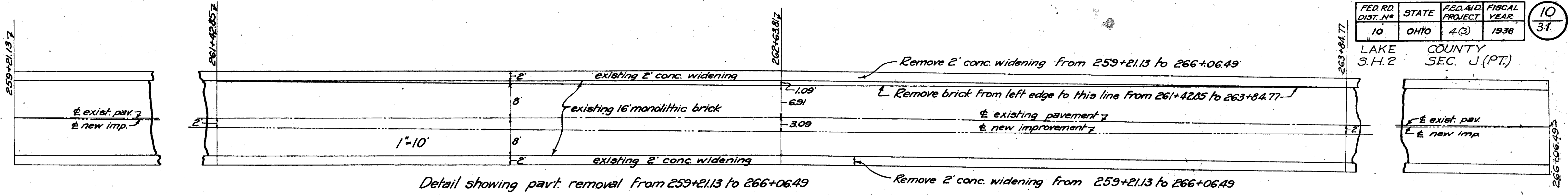


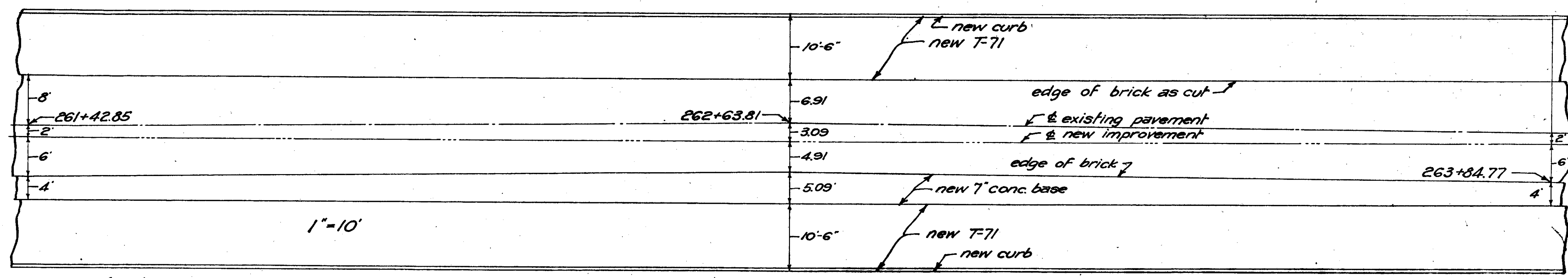
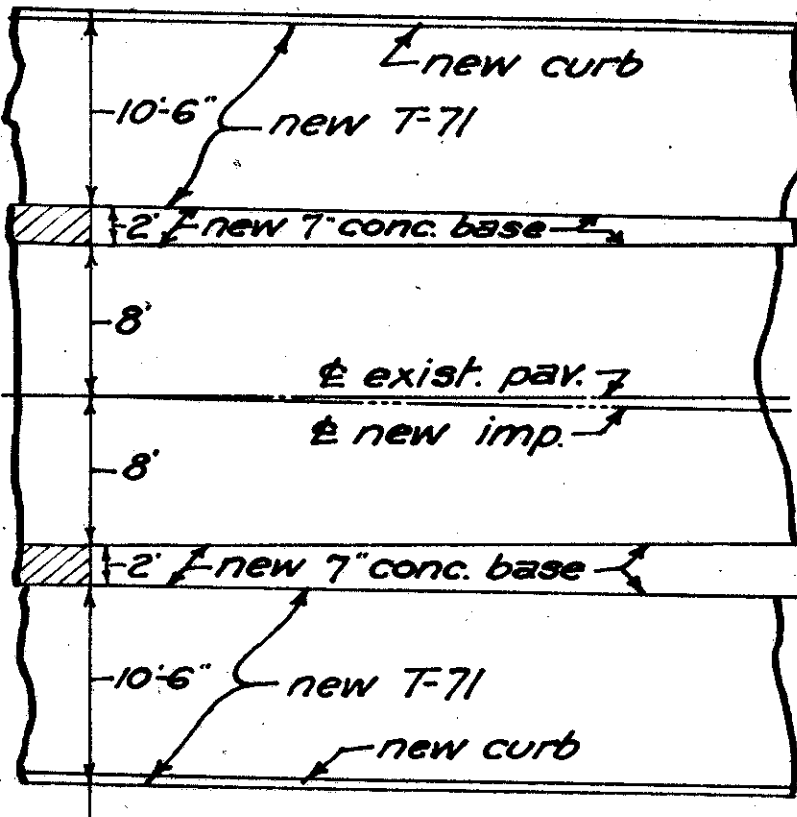
FED. RD. DIST. NO.	STATE	FED. AID PROJECT	FISCAL YEAR
10	OHIO	4(3)	1938

10
31

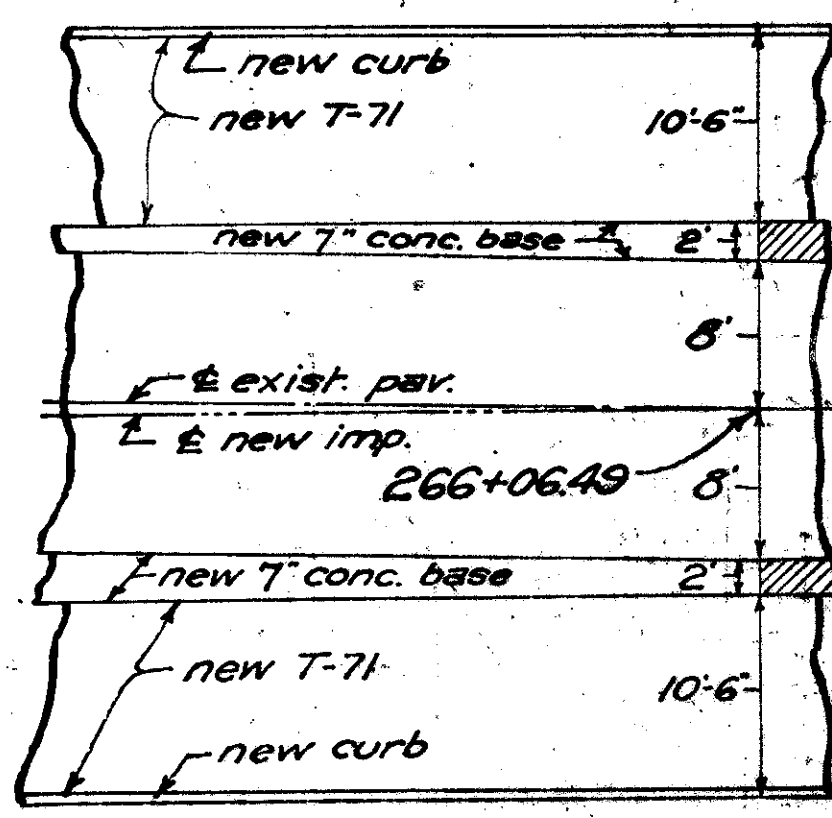
LAKE COUNTY
S.H.2 SEC. J (PT.)



Detail showing pavt. removal from 259+21.13 to 266+06.49



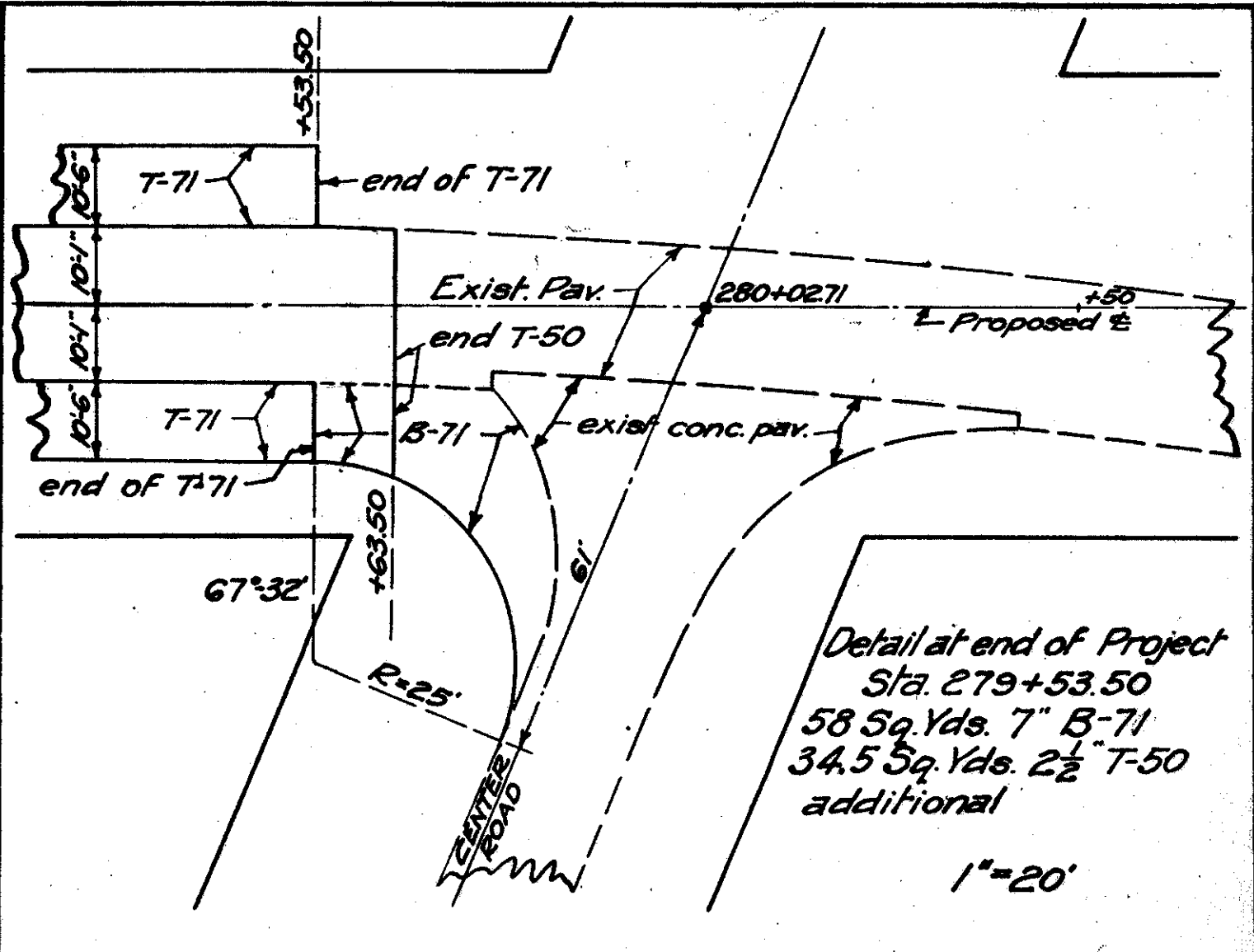
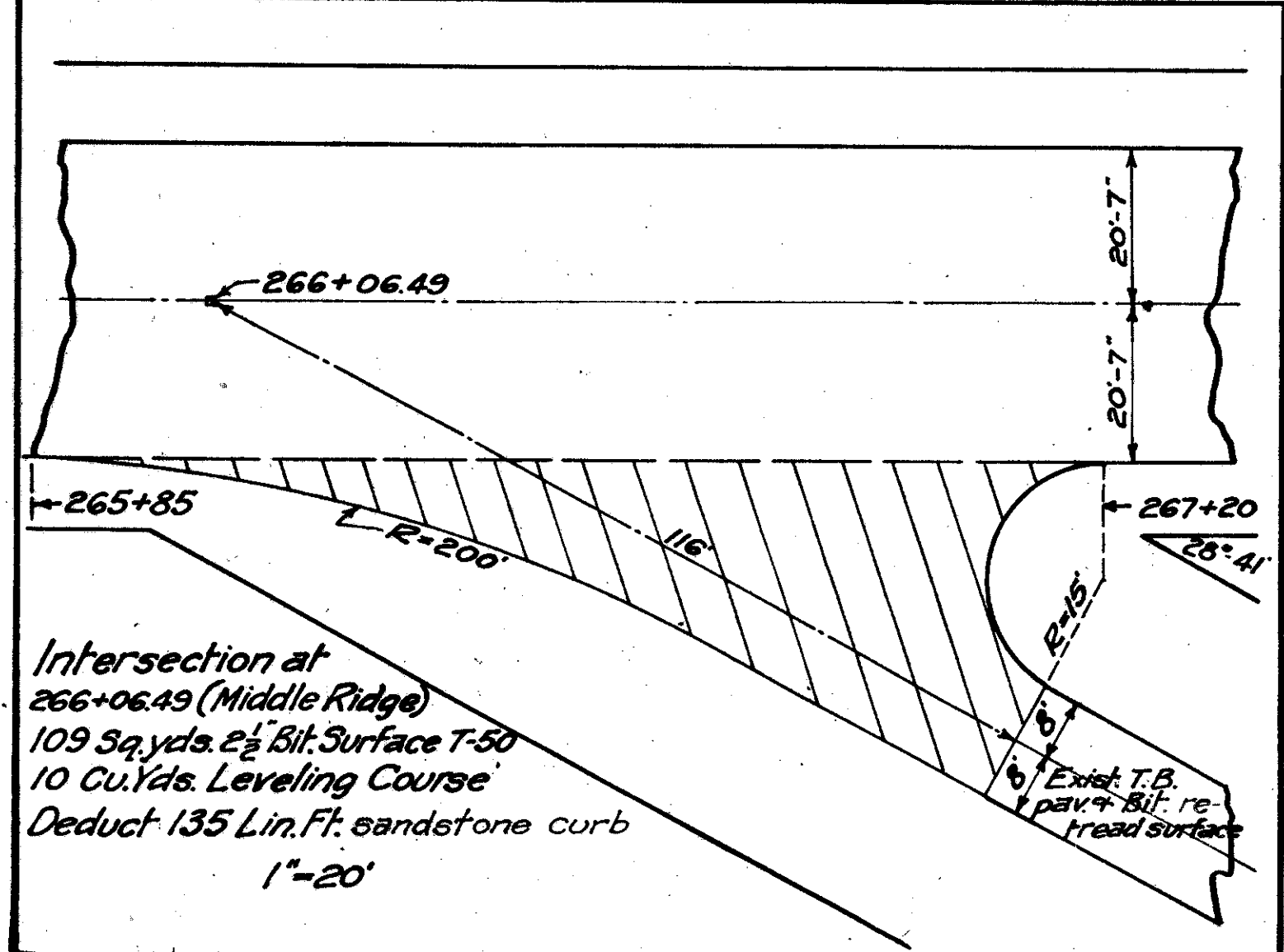
Detail showing new 8' (B-70) conc. base construction, after pavt. removal as shown above
 Note:- New base required on left from 259+21.13 to 261+42.85 and from 263+84.77 to 266+06.49.
 Required on right from 259+21.13 to 266+06.49



DETAIL FROM 259+21.13 TO 266+06.49
 Relocation to prevent removal of trees on left.

QUANTITIES

- 321 Sq. yds. existing pavement removed.
- 321 Sq. yds. 7" conc. base course (B-71)



Detail at end of Project
 Sta. 279+53.50
 58 Sq. Yds. 7" B-71
 34.5 Sq. Yds. 2 1/2" T-50
 additional