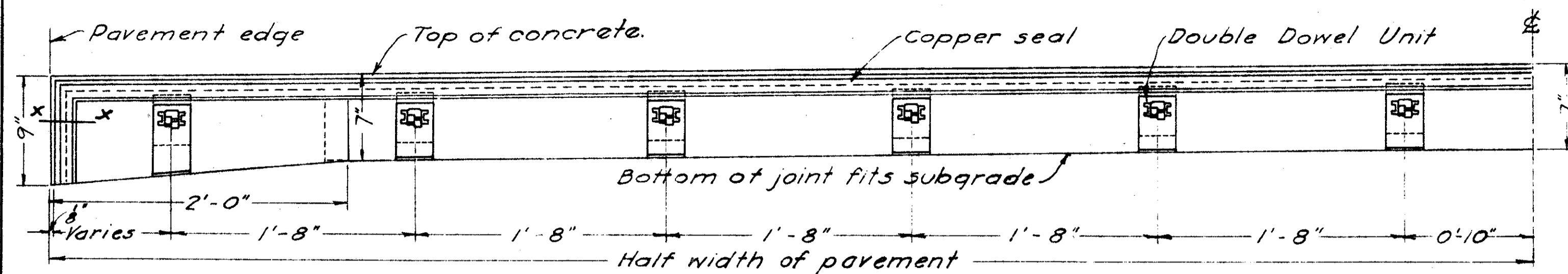


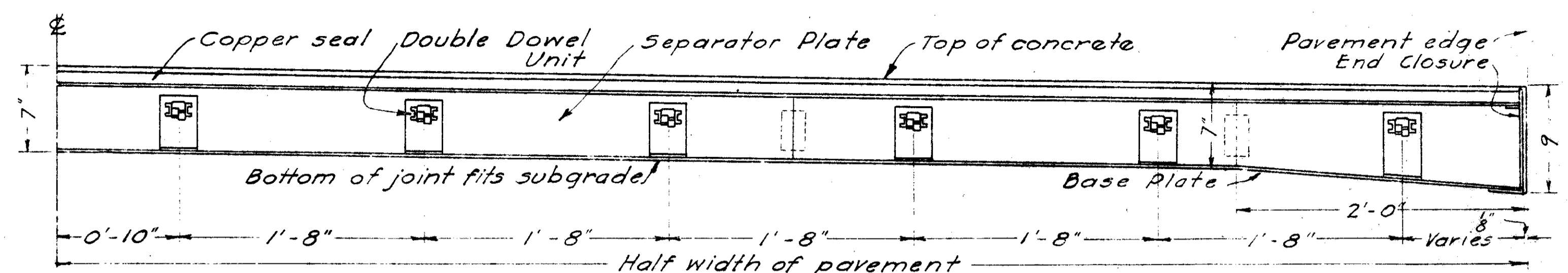
TRANSVERSE JOINTS

EXPANSION JOINT

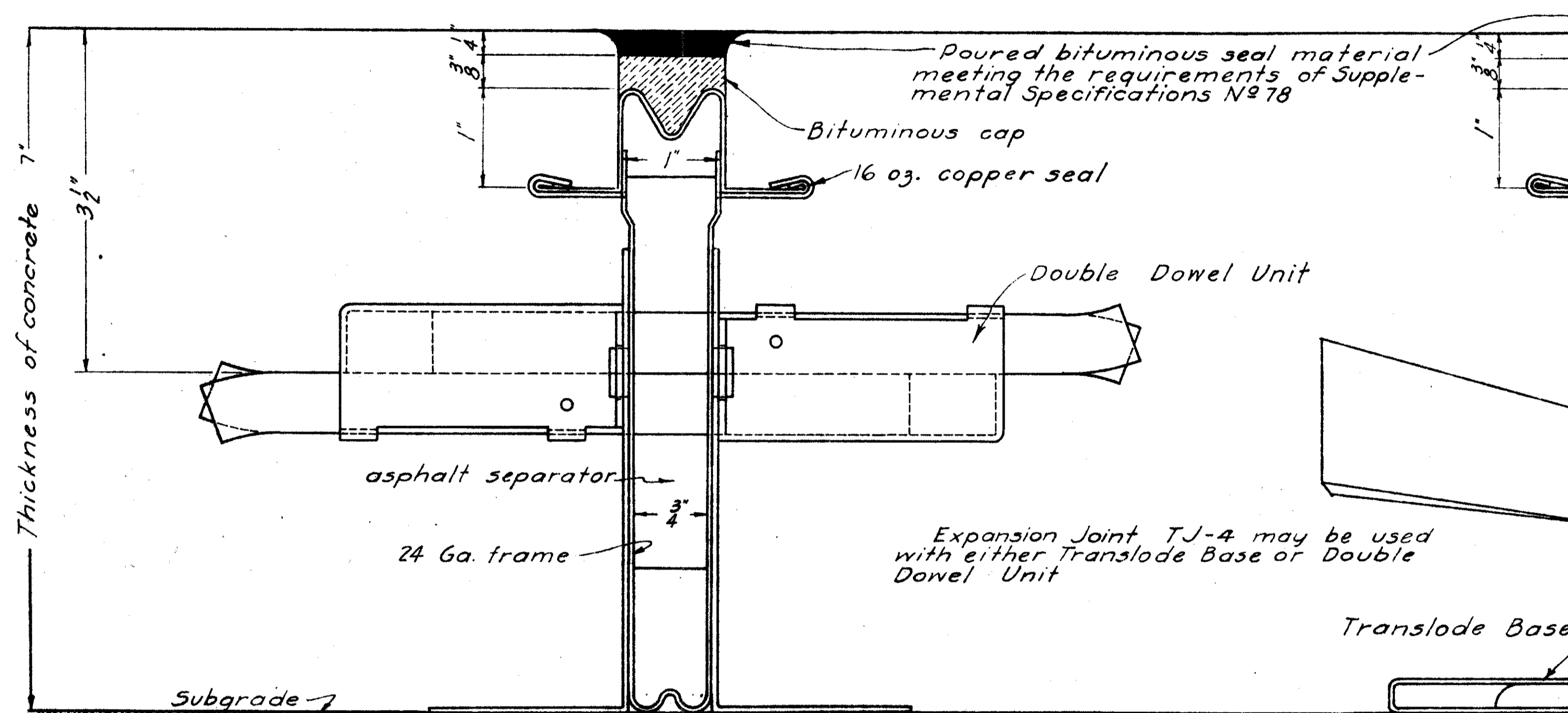


ELEVATION OF JOINT

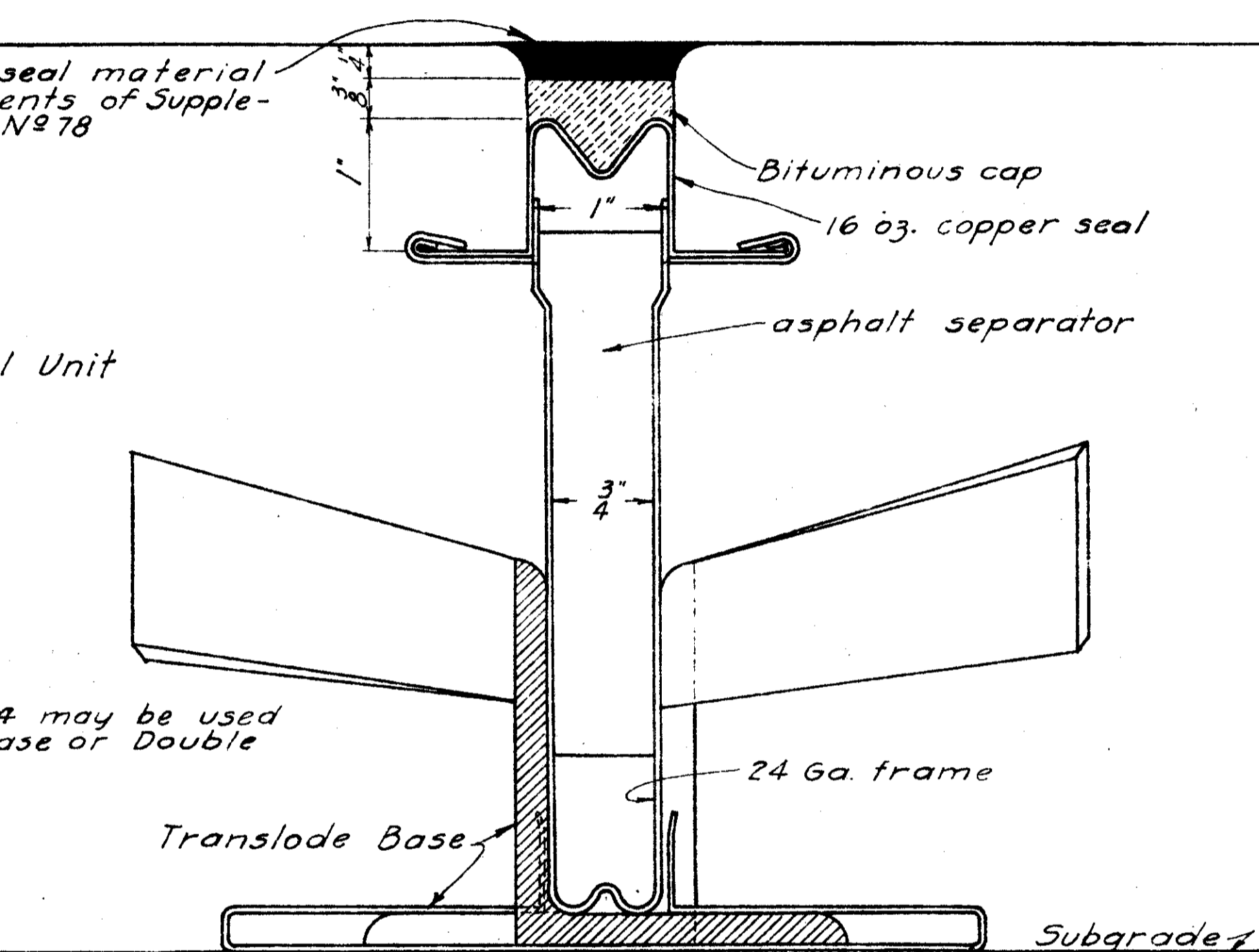
CONSTRUCTION JOINT



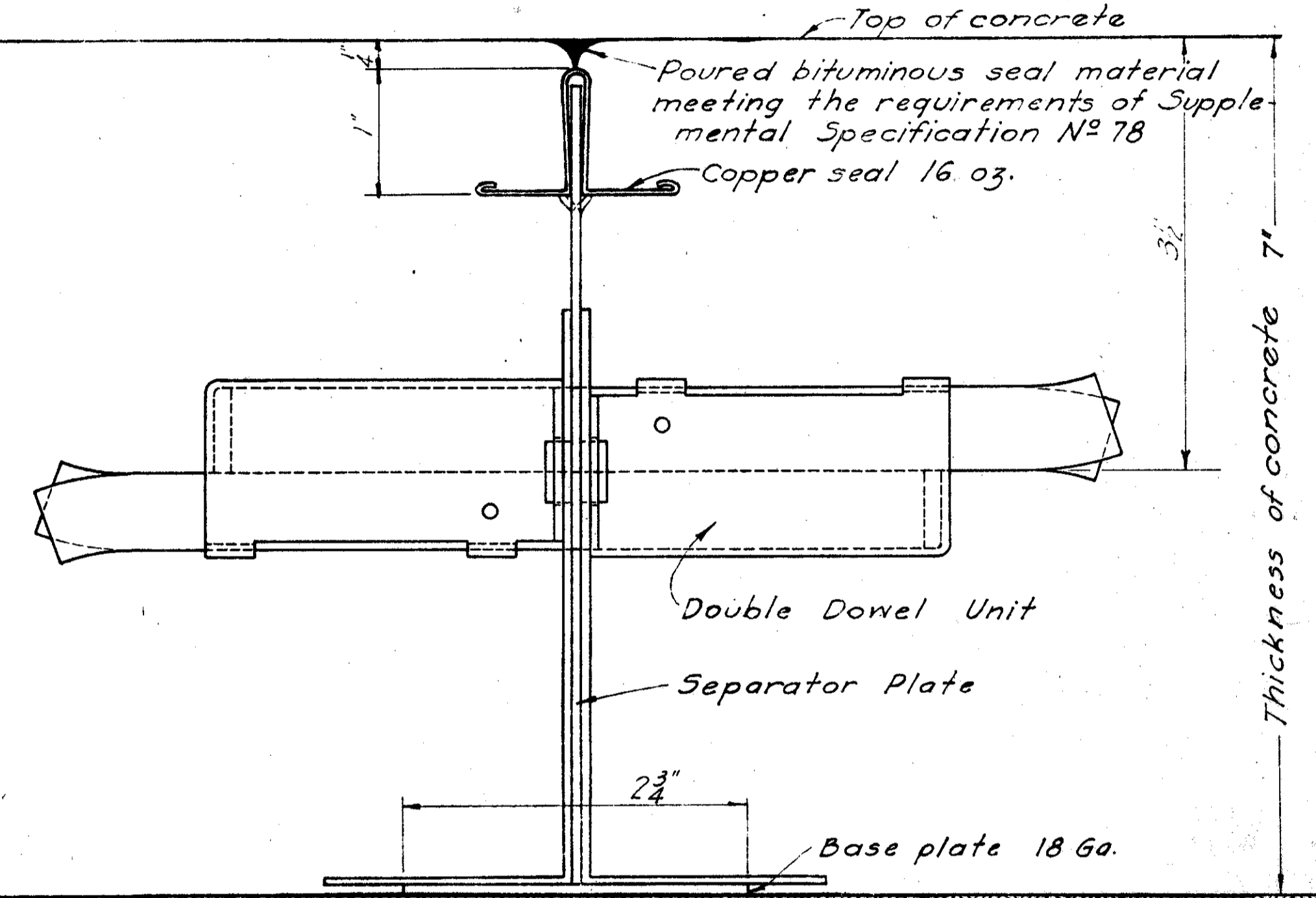
ELEVATION OF JOINT



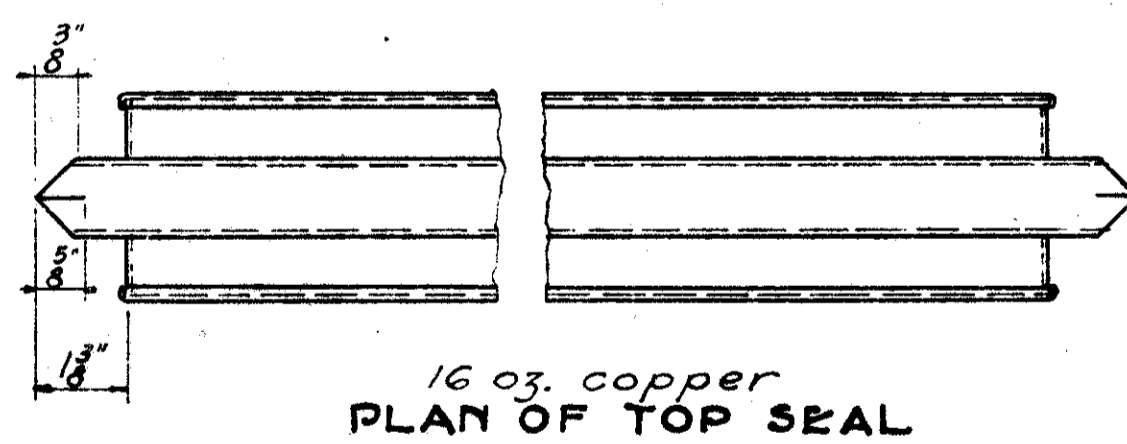
TYPICAL SECTION OF JOINT



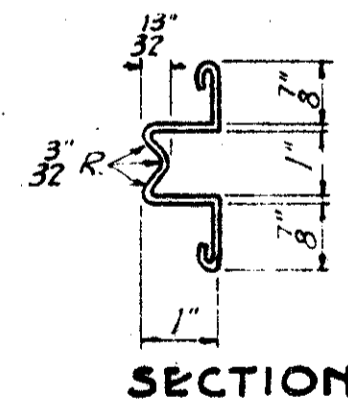
TYPICAL SECTION OF JOINT



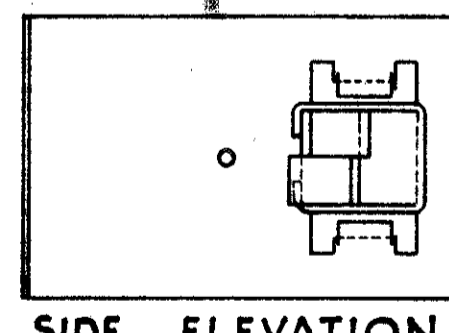
TYPICAL SECTION OF JOINT



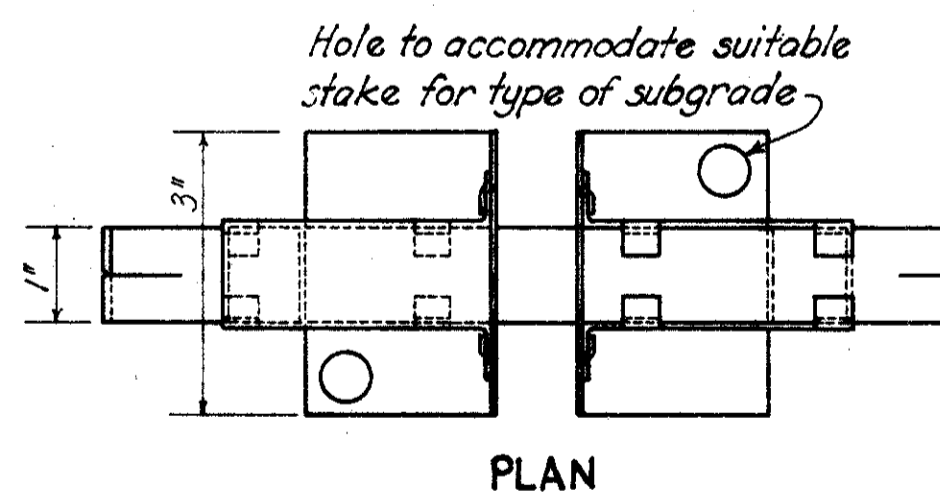
16 oz. copper seal PLAN OF TOP SEAL



SECTION

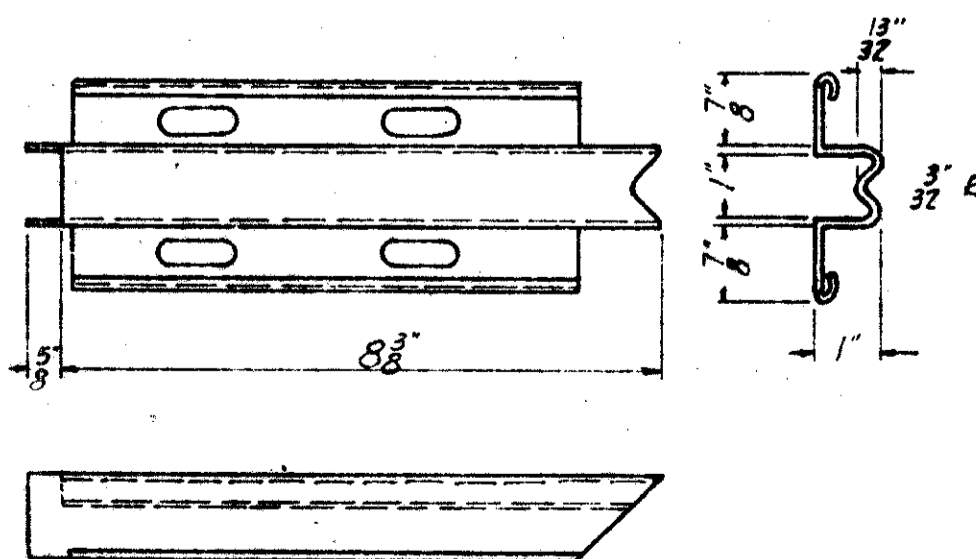


SIDE ELEVATION

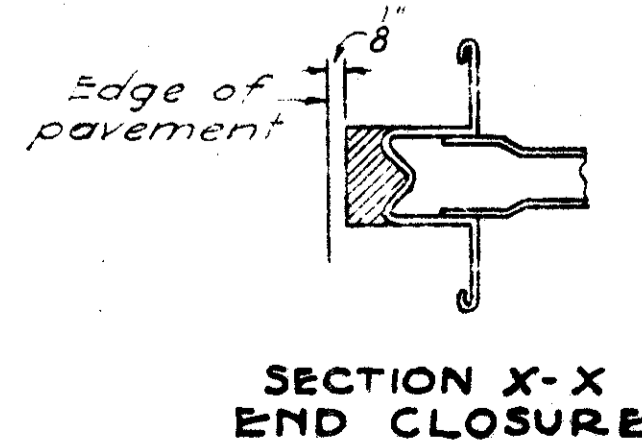


PLAN

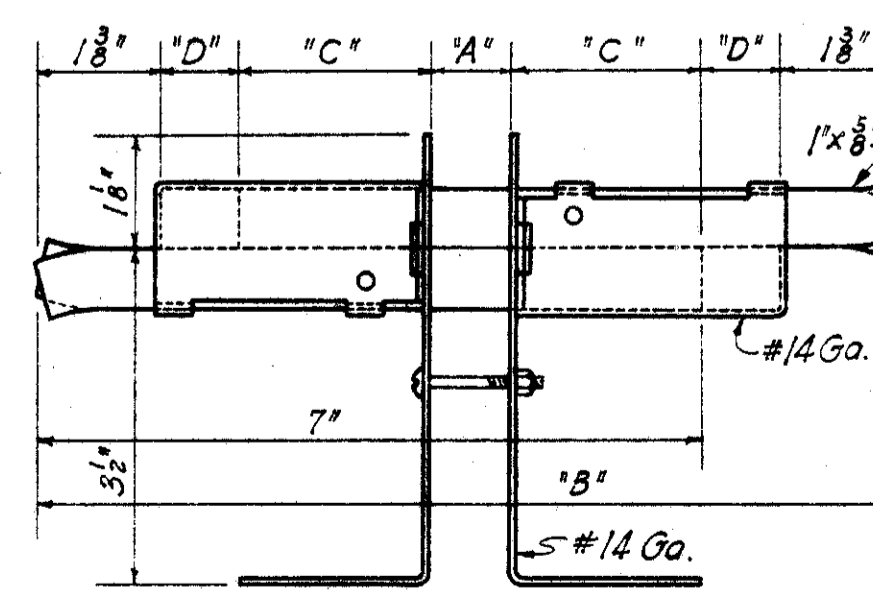
Dimension "A" for expansion joint	= 13"
"B"	= 9 5/16"
"C"	= 2"
"D"	= 8"
"A" for construction joint	= 6 1/2"
"B"	= 8 1/4"
"C"	= 2 1/2"
"D"	= 6 1/2"



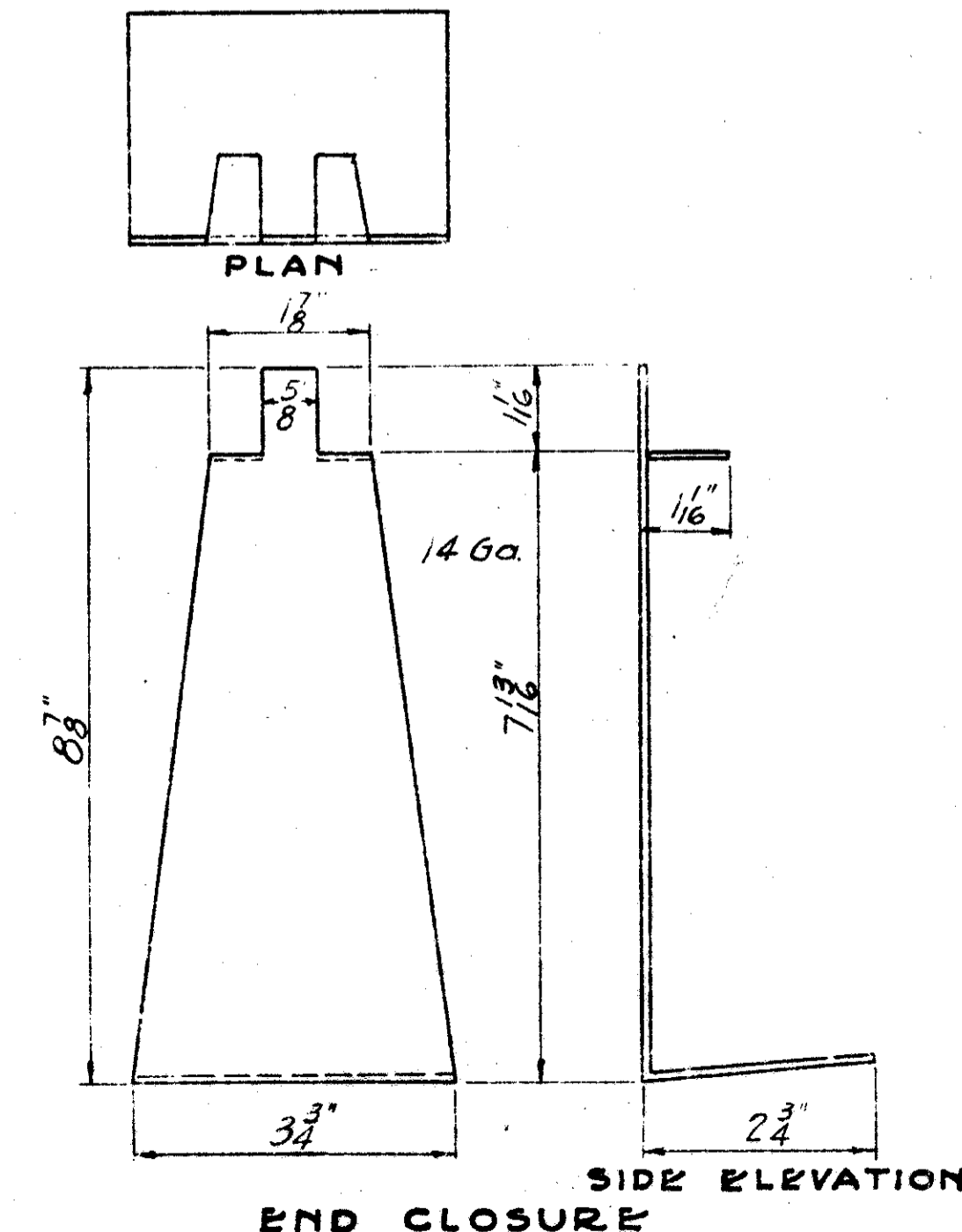
16 oz. copper END CAP DETAIL



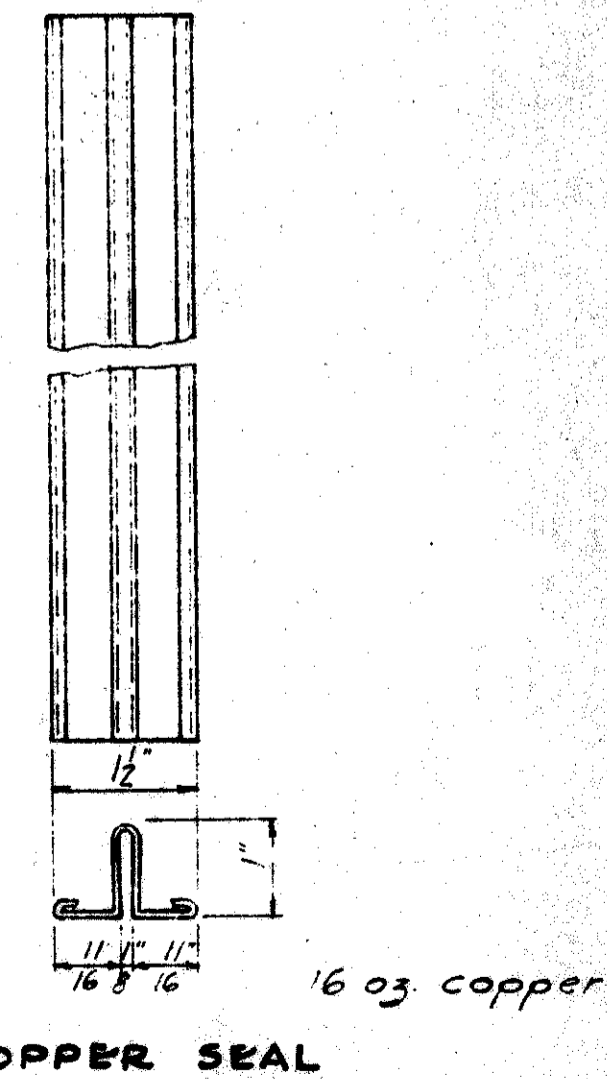
SECTION X-X END CLOSURE



DETAIL OF DOUBLE DOWEL UNIT



END CLOSURE SIDE ELEVATION



16 oz. copper COPPER SEAL

TJ-4