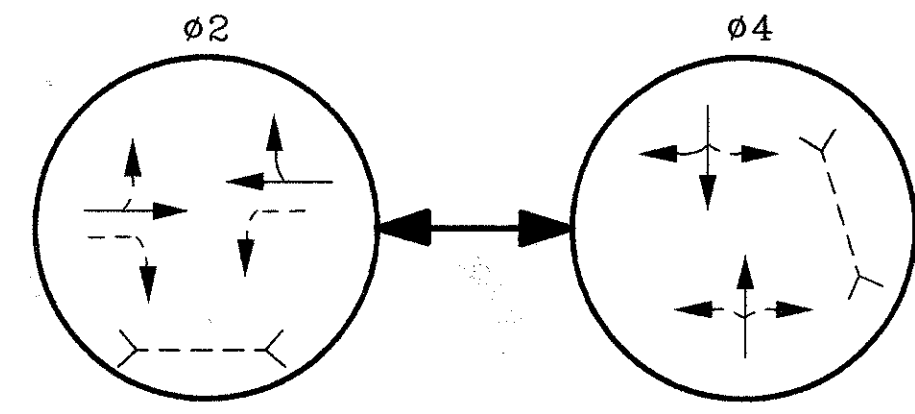
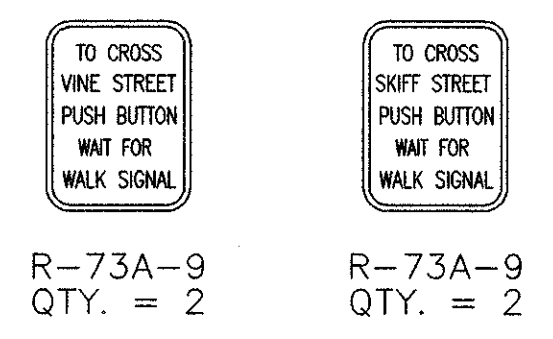
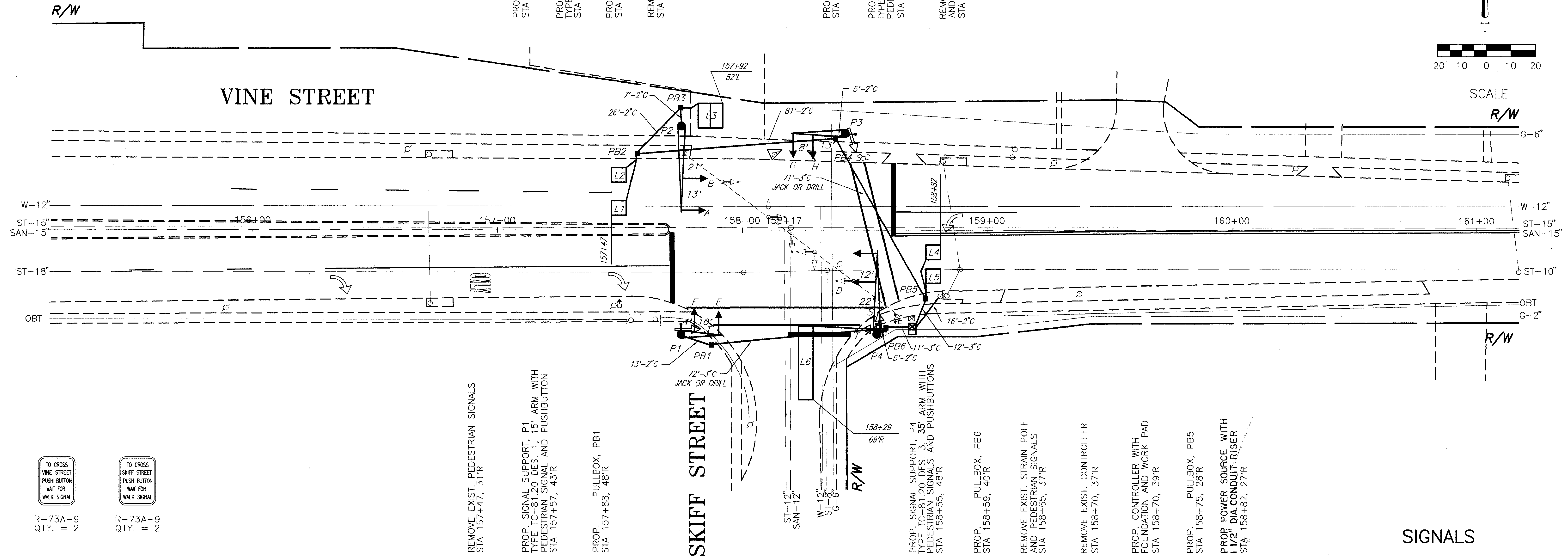
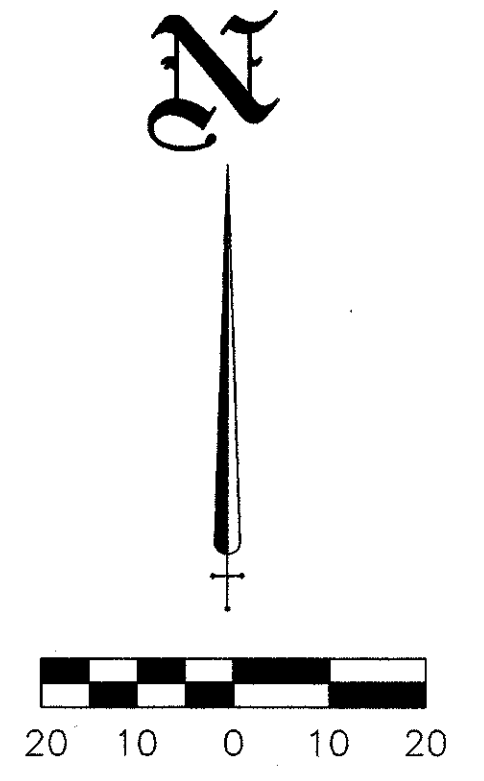


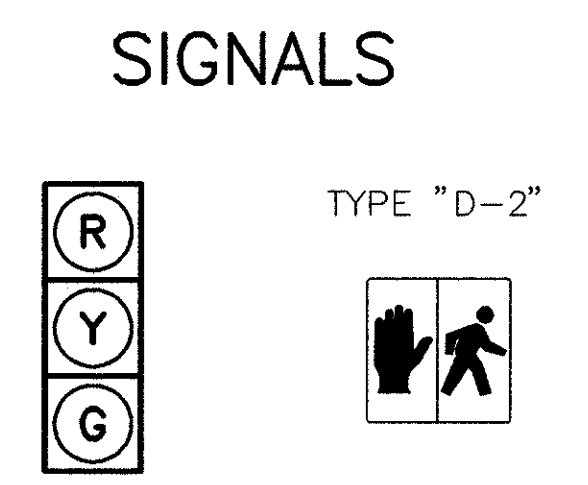
PHASING DIAGRAM



THE UNDERGROUND UTILITIES ARE SHOWN ACCORDING TO INFORMATION FURNISHED BY THE UTILITIES CONCERNED. THEIR ACCURACY IS NOT GUARANTEED, THEREFORE THEY SHOULD BE RECHECKED BEFORE UNDERGROUND CONSTRUCTION BEGINS.



PED SIGNS



SIGNALS

- PROP. PULLBOX, PB2
STA 157+57, 32'L
- PROP. SIGNAL SUPPORT, P2
TYPE TC-81.20 DES. 3, 35' ARM
STA 157+75, 43'L
- PROP. PULLBOX, PB3
STA 157+75, 51'L
- REMOVE EXIST. STRAIN POLE
STA 157+77, 32'L
- PROP. PULLBOX, PB4
STA 158+38, 38'L
- PROP. SIGNAL SUPPORT, P3
TYPE TC-81.20 DES. 1, 22' ARM WITH
PEDESTRIAN SIGNAL AND PUSHBUTTON
STA 158+42, 40'L
- REMOVE EXIST. PEDESTAL
AND PEDESTRIAN SIGNAL
STA 158+51, 30'L

- REMOVE EXIST. PEDESTRIAN SIGNALS
STA 157+47, 31'R
- PROP. SIGNAL SUPPORT, P1
TYPE TC-81.20 DES. 1, 15' ARM WITH
PEDESTRIAN SIGNAL AND PUSHBUTTON
STA 157+57, 43'R
- PROP. PULLBOX, PB1
STA 157+88, 48'R
- PROP. SIGNAL SUPPORT, P4
TYPE TC-81.20 DES. 3, 35' ARM WITH
PEDESTRIAN SIGNALS AND PUSHBUTTONS
STA 158+55, 48'R
- PROP. PULLBOX, PB6
STA 158+59, 40'R
- REMOVE EXIST. STRAIN POLE
AND PEDESTRIAN SIGNALS
STA 158+65, 37'R
- REMOVE EXIST. CONTROLLER
STA 158+70, 37'R
- PROP. CONTROLLER WITH
FOUNDATION AND WORK PAD
STA 158+70, 39'R
- PROP. PULLBOX, PB5
STA 158+75, 28'R
- PROP. POWER SOURCE WITH
1/2" DIA. CONDUIT RISER
STA 158+82, 27'R