

NOTES:
 1. ALL ANGLES MEASURED CLOCKWISE.
 2. BASE PLATE IS ORIENTED SQUARE TO MAST ARM A (LARGEST ARM) EVEN IF SUPPORT HAS TWO MAST ARMS.

SUPPORT NO.	SIGNAL SUPPORT		FOUNDATION					ORIENTATION ANGLES (DEG.) FROM MAST ARM "A"								
	TC-81.20 TC-12.30	TC-81.20 TC-12.30	L	L 1	L 2	L 3	X 1	MAST ARM A ANGLE (DEG.)	MAST ARM B	PEDESTRIAN SIGNALS	PEDESTRIAN PUSH BUTTONS	POWER SERVICE	CONTROLLER	LUMINAIRE BRACKET	HANDHOLE	CABLE ENTRANCE (12" FROM TOP)
P1	PED		8'	207+37	36'R				0	0	0				180	
P2	11	4	20'	207+69	23'L	36	25	35	270	190	180				180	
		1				18	7	17	90							
P3	2	2	20'	208+13	30'R	25	14	24	0	0	0				180	

ORIENTATION ANGLE CHART

NOTES:
 1. PHASE SPLITS SHALL INCLUDE ALL GREEN PLUS YELLOW & ALL RED
 2. PERMISSIVES SHALL START AT THE ZERO POINT OF THE CYCLE
 3. OFFSETS SHALL BE REFERENCED TO THE BEGINNING OF PHASE 2 YELLOW

FUNCTION	ø1	ø2	ø4
MINIMUM GREEN	7	22	8
PED WALK	-	7	7
PED CLEARANCE	-	15	13
GREEN EXTENSION	-	-	3.5
MAXIMUM GREEN	7	45	25
YELLOW CLEARANCE	3.6	3.6	3.1
ALL RED CLEARANCE	1.5	1.5	1.6
RECALL	NONE	PED	NONE

SIGNAL TIMING

	DIAL 1	DIAL 2	DIAL 3
CYCLE LENGTH	85	100	120
PHASE 1 SPLIT	15 %	12 %	10 %
PHASE 2 SPLIT	57 %	56 %	69 %
PHASE 4 SPLIT	28 %	33 %	21 %
PERMISSIVE	10 %	10 %	10 %
OFFSET	97 %	87 %	80 %
TIME OF DAY SCHEDULE	ALL OTHER TIMES	6:30AM TO 9:00AM MON-SAT	3:30PM TO 6:30PM MON-SAT

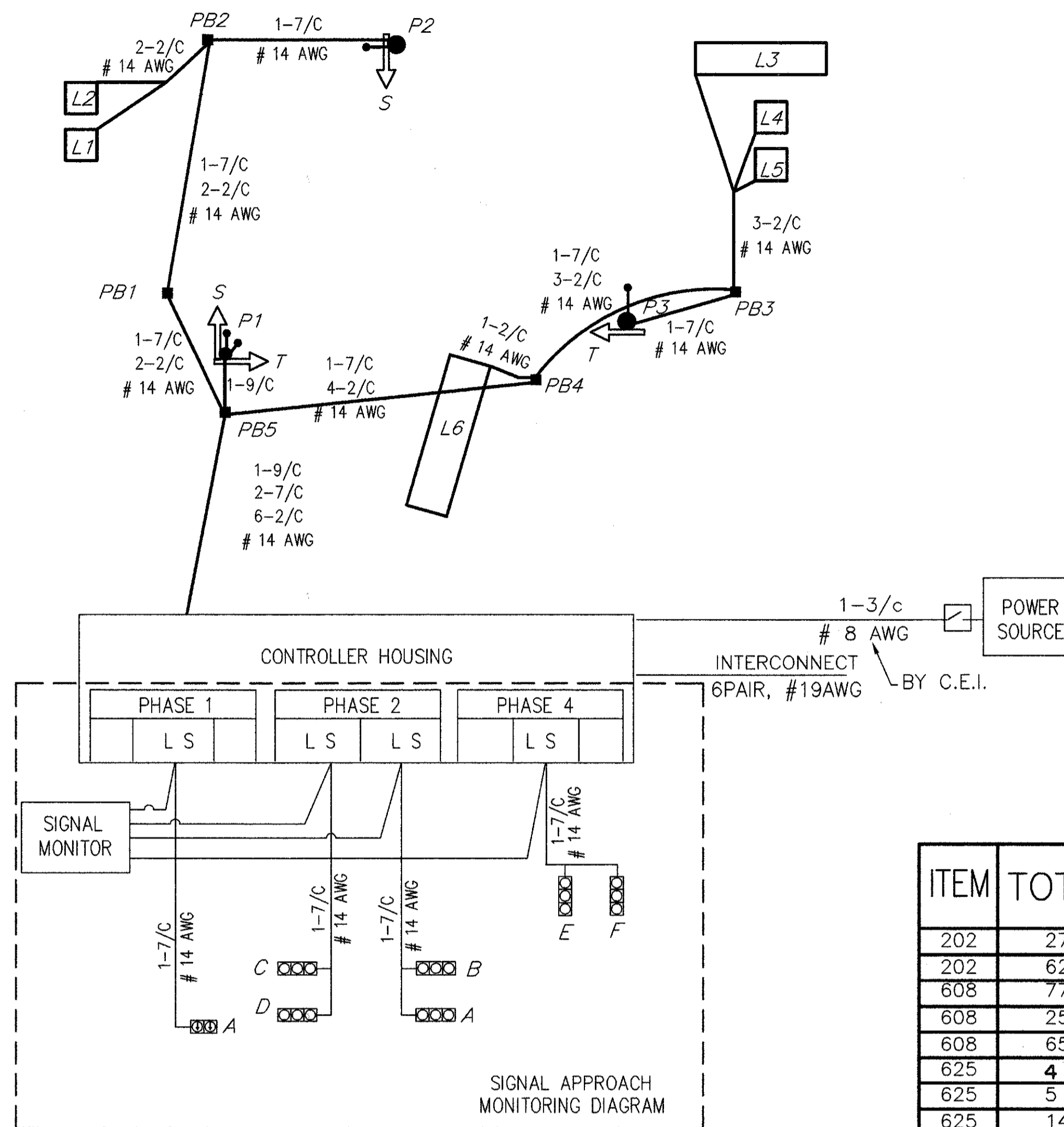
COORDINATION TIMING

SIGNAL HEAD	ø1		ø2		ø4		FLASH
	R/W	CLEAR	R/W	CLEAR	R/W	CLEAR	
A	R/G	Y/G	G	G	Y	R	R
B	G	G	G	G	Y	R	R
C	R	R	R	G	Y	R	R
D	R	R	R	G	Y	R	R
E	R	R	R	R	R	R	G
F	R	R	R	R	R	R	G
S-S	DW	DW	DW	DW	DW	DW	W
T-T	DW	DW	DW	W	FDW	DW	DW

SIGNAL DISPLAY CHART

LOOP #	SIZE	# TURNS	MODE	DELAY	UNIT #	PHASE
L1	6' x 6'	3	PRESENCE	0	1	SYSTEM
L2	6' x 6'	3	PRESENCE	0	2	SYSTEM
L3	6' x 25'	2	PRESENCE	8	3	1
L4	6' x 6'	3	PRESENCE	0	4	SYSTEM
L5	6' x 6'	3	PRESENCE	0	5	SYSTEM
L6	8' x 30'	2	PRESENCE	8	6	4

LOOP DETECTOR CHART



WIRING DIAGRAM

ITEM	TOTAL	UNIT	DESCRIPTION
202	27	LIN FT	CURB REMOVED
202	625	SQ FT	WALK REMOVED
608	77	SQ FT	CURB RAMP, TYPE 1
608	25	SQ FT	CURB RAMP, TYPE 2
608	650	SQ FT	4" CONCRETE WALK
625	4	EACH	GROUND ROD
625	5	EACH	PULLBOX, MISC. AS PER PLAN
625	141	LIN FT	CONDUIT, 2", 713.04
625	6	LIN FT	CONDUIT, 3", 713.04
625	109	LIN FT	CONDUIT, JACKED OR DRILLED UNDER PAVEMENT, 3"
625	147	LIN FT	TRENCH
632	5	EACH	VEHICULAR SIGNAL HEAD, 3 SECT., 12" LENS, 1-WAY, AS PER PLAN
632	1	EACH	VEHICULAR SIGNAL HEAD, 5 SECT., 12" LENS, 1-WAY, AS PER PLAN
632	4	EACH	PEDESTRIAN SIGNAL HEAD, TYPE DZ
632	4	EACH	PEDESTRIAN PUSHBUTTON
632	4	EACH	LOOP DETECTOR UNIT, AS PER PLAN
632	2	EACH	LOOP DETECTOR UNIT, DELAY AND EXTENSION TYPE, AS PER PLAN
632	4.53	CU YD	CONCRETE FOR ANCHOR BASE FOUNDATION
632	1	EACH	SIGNAL SUPPORT, TYPE TC-81.20, DES. 2, WITH 25' ARM
632	1	EACH	SIGNAL SUPPORT, TYPE TC-81.20, DES. 11 WITH MAST ARMS TYPE TC-81.20, DES. 4, 36' AND TYPE TC-81.20, DES. 1, 18'
632	1	EACH	PEDESTAL, 8", TRANSFORMER BASE
632	2	EACH	CABLE SUPPORT ASSEMBLY
632	298	LIN FT	LOOP DETECTOR PAVEMENT CUTTING
632	949	LIN FT	SIGNAL CABLE, 7 CONDUCTOR, NO. 14 AWG
632	30	LIN FT	SIGNAL CABLE, 9 CONDUCTOR, NO. 14 AWG
632	788	LIN FT	LOOP DETECTOR WIRE, TYPE E
632	670	LIN FT	LOOP DETECTOR LEAD-IN CABLE
632	38	LIN FT	POWER CABLE, 3 CONDUCTOR, NO. 8 AWG
632	1	EACH	CONDUIT RISER, 1 1/2"
632	6	EACH	COVERING OF VEHICULAR SIGNAL HEAD
632	1	EACH	REMOVAL OF TRAFFIC SIGNAL INSTALLATION, AS PER PLAN
633	8.33	SQ FT	CONTROLLER WORK PAD
633	0.99	CU YD	CONCRETE FOR CABINET FOUNDATION
633	1	EACH	CONTROLLER, ACTUATED, 4 PHASE, SOLID STATE DIGITAL MICROPROCESSOR, AS PER PLAN