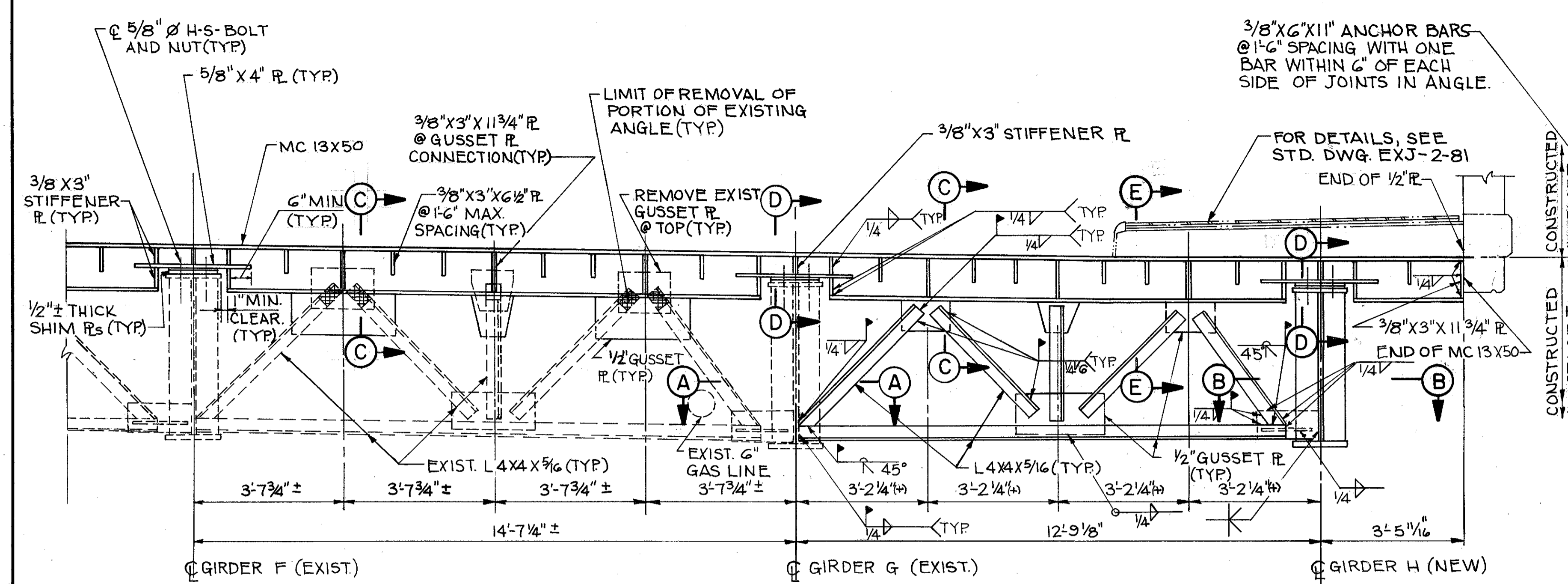
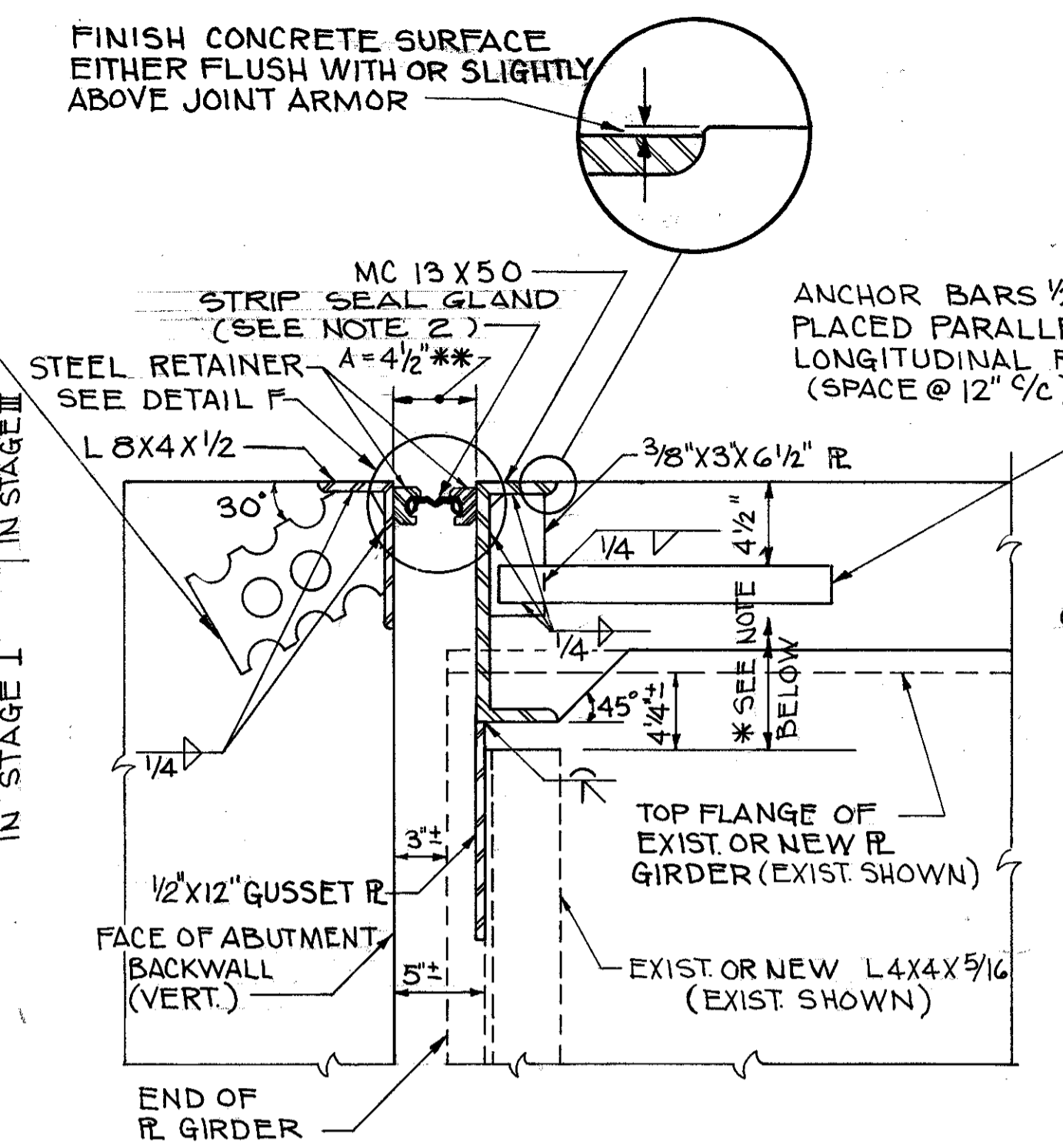


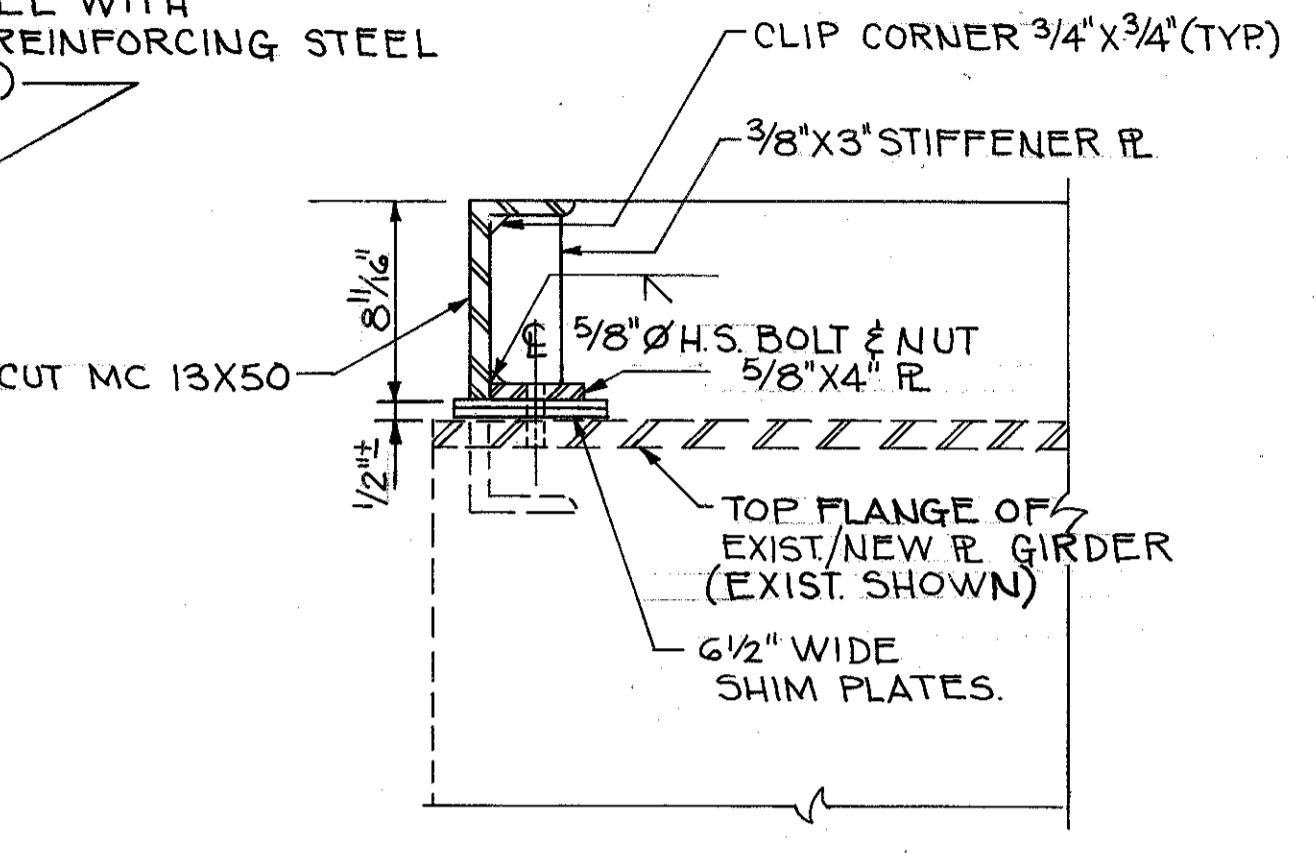
LAKE COUNTY
LAK-20-19.39



END CROSSFRAME NEAR FORWARD ABUTMENT
(LOOKING EAST) AS SHOWN
END CROSSFRAME NEAR REAR ABUTMENT
LOOKING WEST & OPPOSITE HAND



SECTION C-C



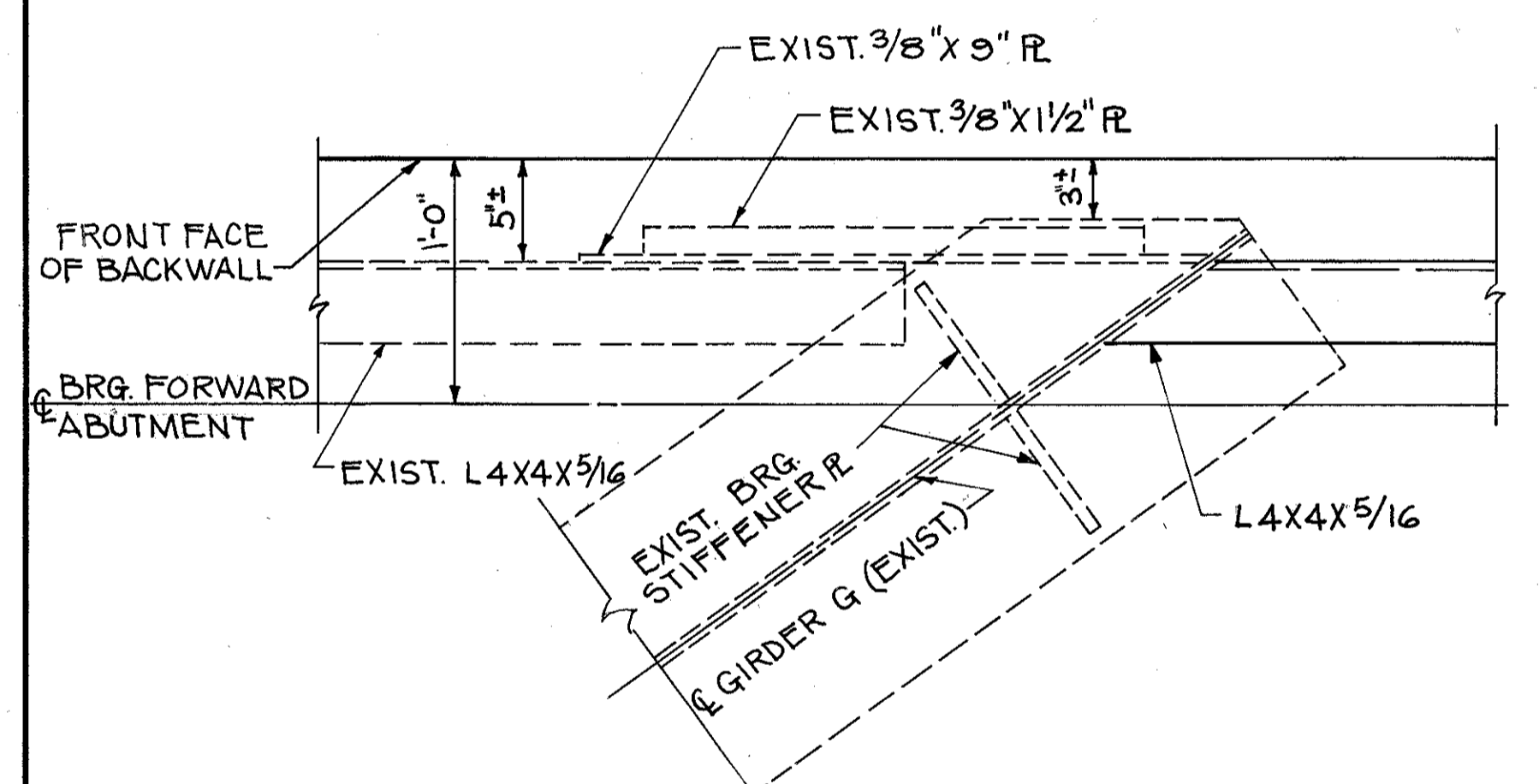
SECTION D-D

** DIMENSION 'A' IS GIVEN AT 60°F. FOR ADJUSTMENT AT DIFFERENT TEMPERATURES, SEE SHEET 2 OF 2, STD. DWG. EXJ-2-81. (DA = 80' FOR REAR ABUTMENT; 180' FOR FORWARD ABUTMENT).

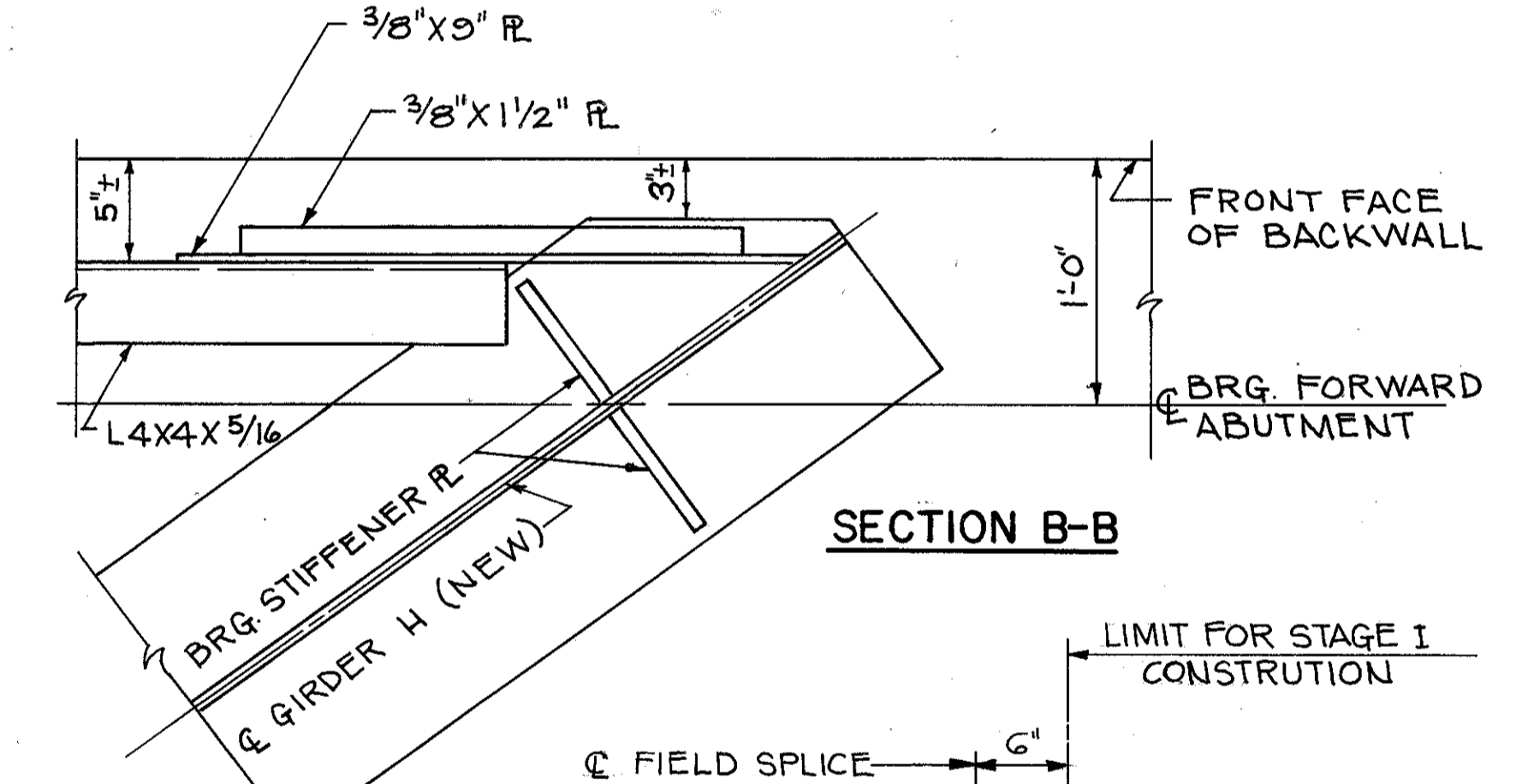
* REMOVE EXIST. STRUCTURAL STEEL INCLUDING EXIST. END DAM (EXIST. ANGLES 2X4 & 6X4, EXIST. EDGE BAR & ANCHOR BAR, EXIST. ANCHOR R_s & GUSSET R_s) AND PORTION OF EXIST. END CROSSFRAME L4X4X5/16 ABOVE THE LINE SHOWN ON SECTION C-C.

NOTES:

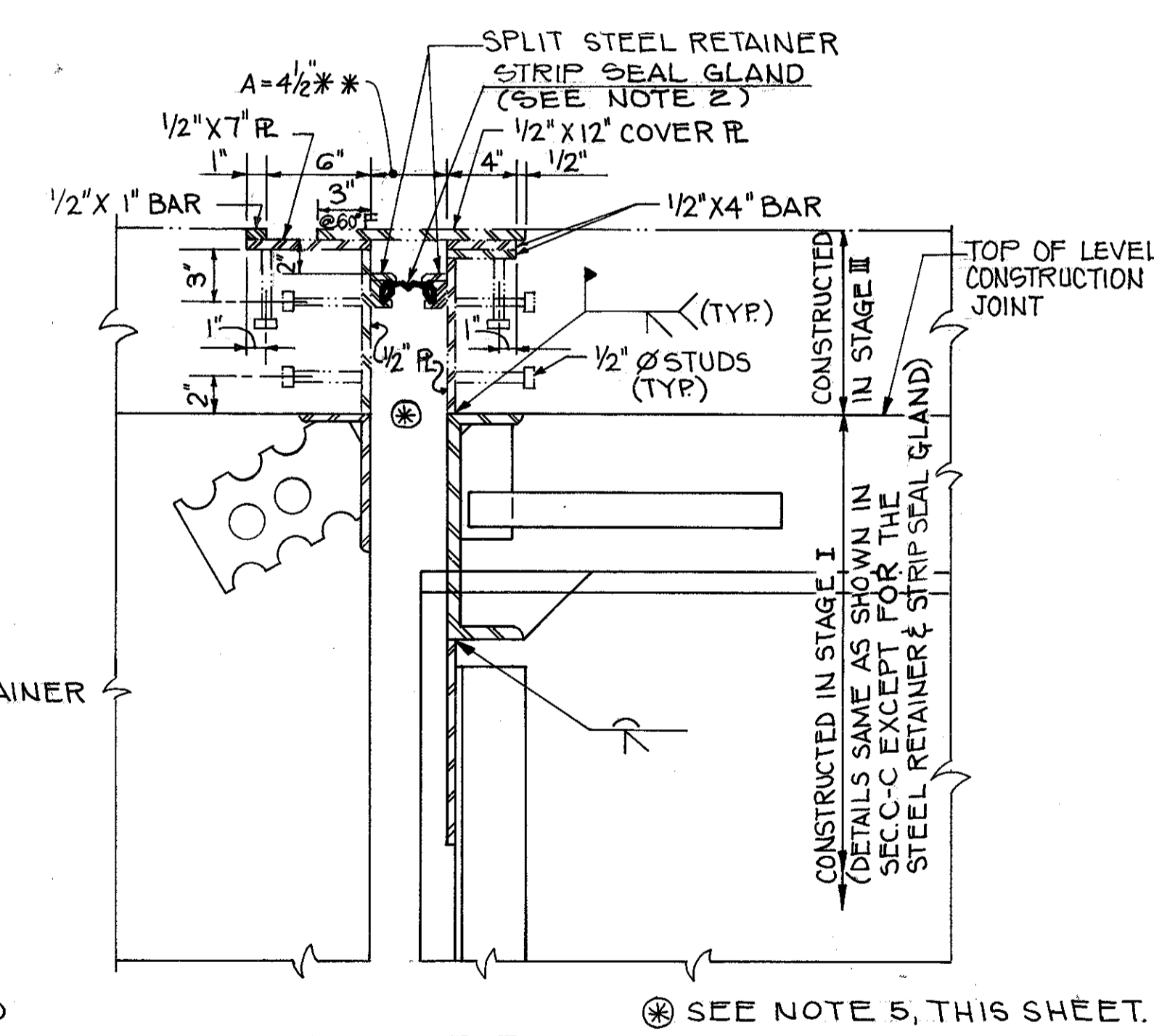
1. THE END CROSSFRAME AND END DAM DETAILS SHOWN ON THIS SHEET ARE FOR THE SOUTH SIDE OF THE BRIDGE. THE END CROSSFRAME AND END DAM DETAILS FOR THE NORTH SIDE OF BRIDGE SHALL BE SIMILAR EXCEPT THAT THE END DAM CONSTRUCTION FOR THE DECK AND SIDEWALK WILL BE IN ONE STAGE.
2. THE STRIP SEAL GLAND SHALL BE INSTALLED IN ONE PIECE AFTER THE SUPERSTRUCTURE IS CONSTRUCTED.
3. FOR DETAILS NOT SHOWN, SEE STD. DWG. EXJ-2-81
4. FOR ADDITIONAL NOTES AND METHOD OF MEASUREMENT FOR THE EXPANSION JOINT, SEE NOTE 18 ON SHEET 3/18
5. PROVIDE TEMPORARY STEEL PLATE (1/2" MIN. THICKNESS) OVER THE 4/2" GAP FOR THE END DAM TO ALLOW TRAFFIC OVER THIS AREA DURING STAGE II CONSTRUCTION.



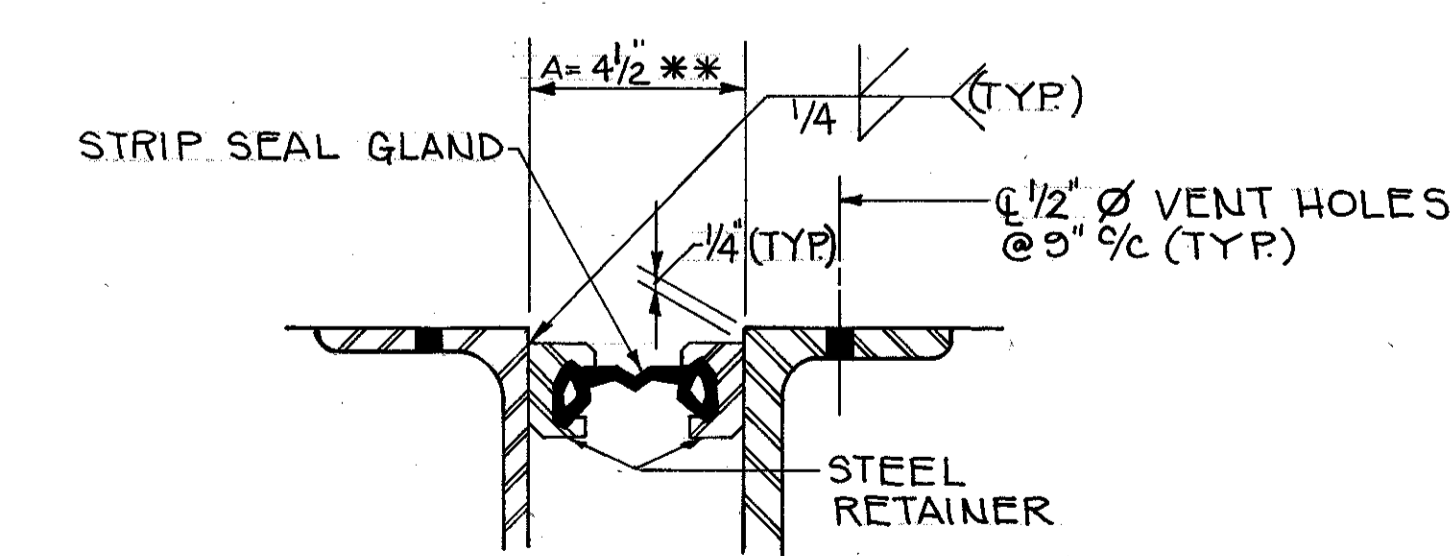
SECTION A-A



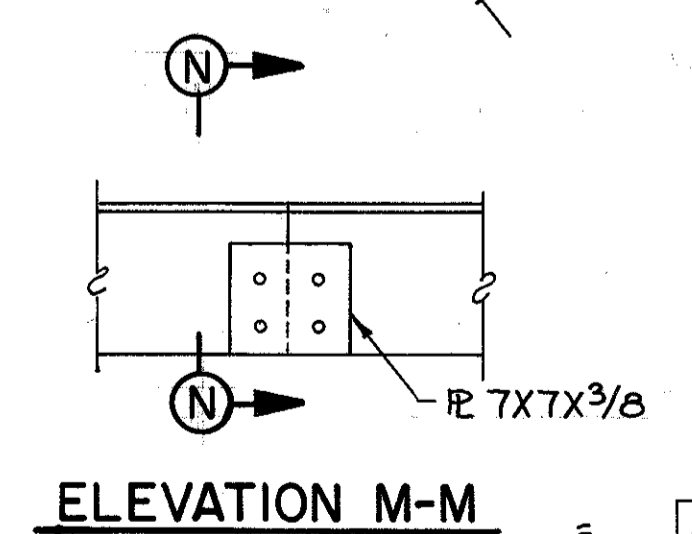
SECTION B-B



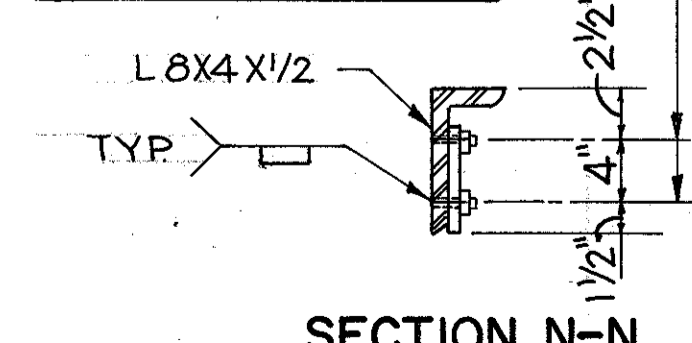
SECTION E-E



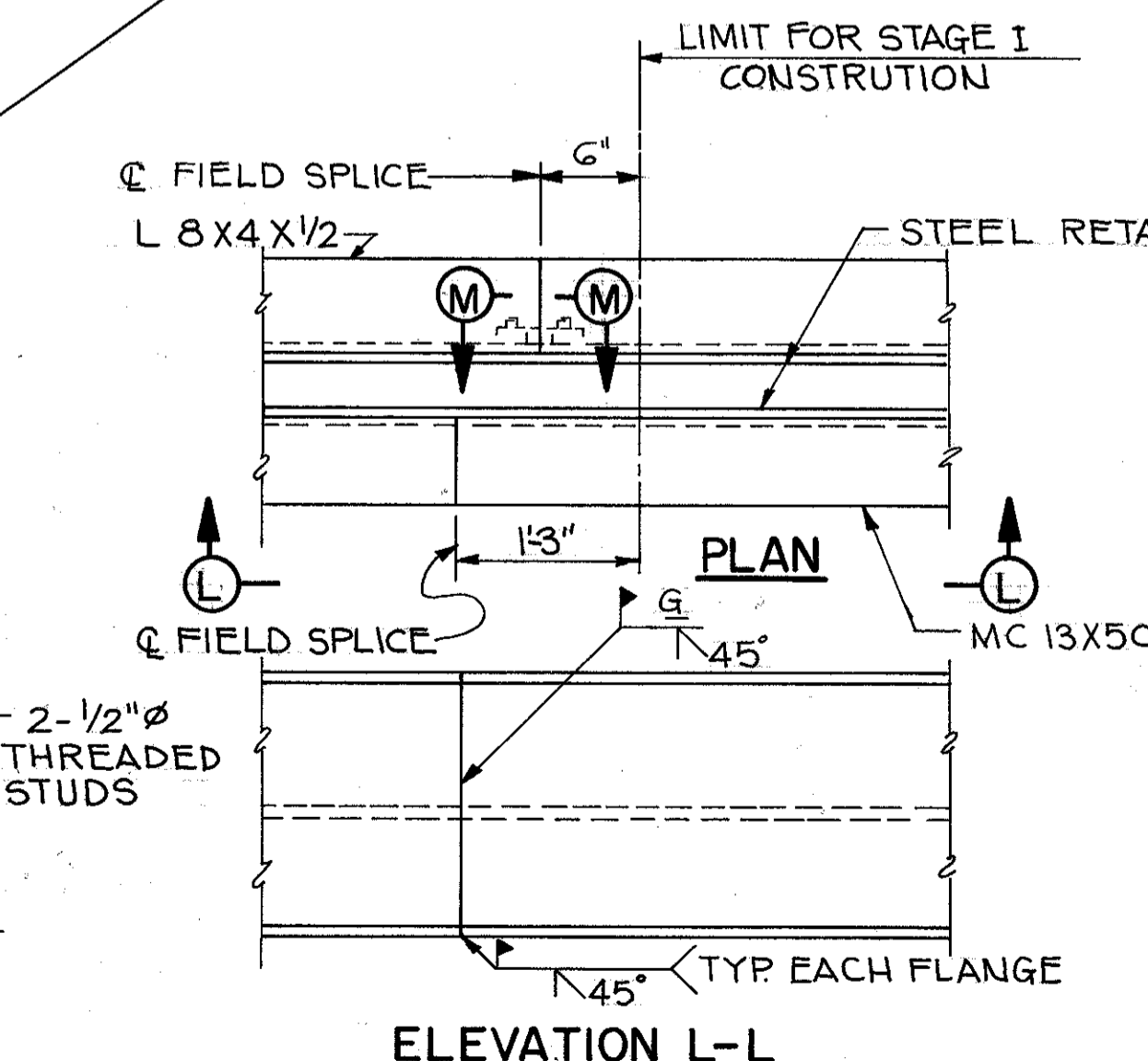
DETAIL F



ELEVATION M-M



SECTION N-N



ELEVATION L-L

FIELD SPICE DETAILS AT END DAM FOR STAGE CONSTRUCTION

POLYTECH, INC.		14/18				
CONSULTING ENGINEERS		CLEVELAND, OHIO				
SUPERSTRUCTURE DETAILS						
BRIDGE NO. LAK-20-1939 OVER S.R.2. (EAST BOUND)						
DESIGNED	DRAWN	TRACED	CHECKED	REVIEWED	DATE	REVISED
CT	CT	MAC	GA	BS	4/88	