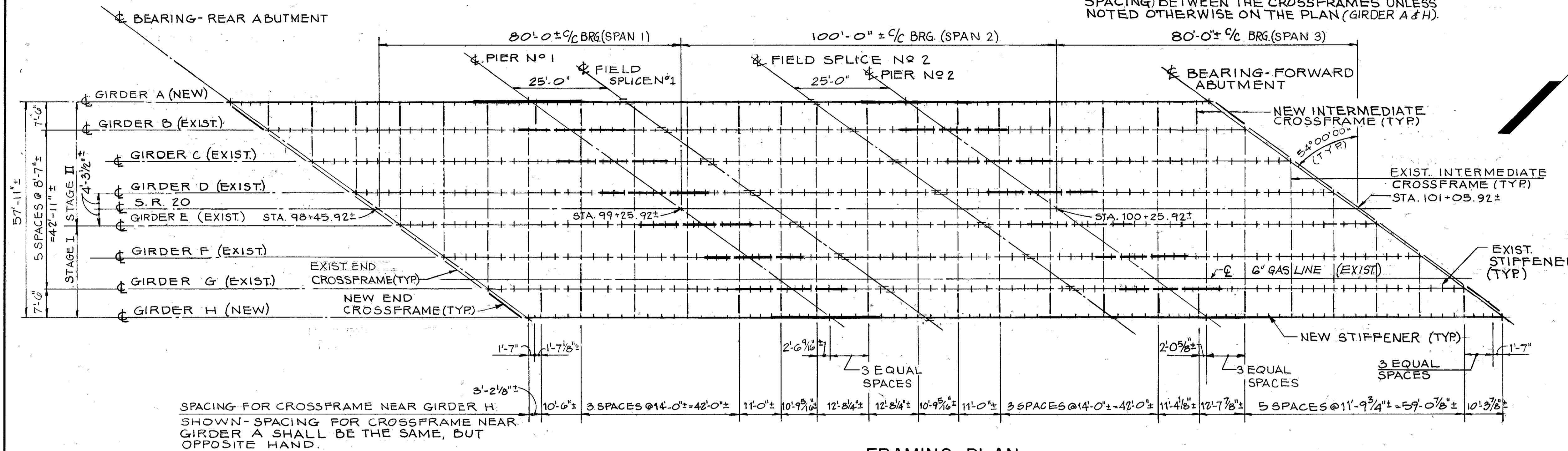


FHWA REGION	STATE	PROJECT
5	OHIO	

26
32

LAKE COUNTY
LAK-20-19.39

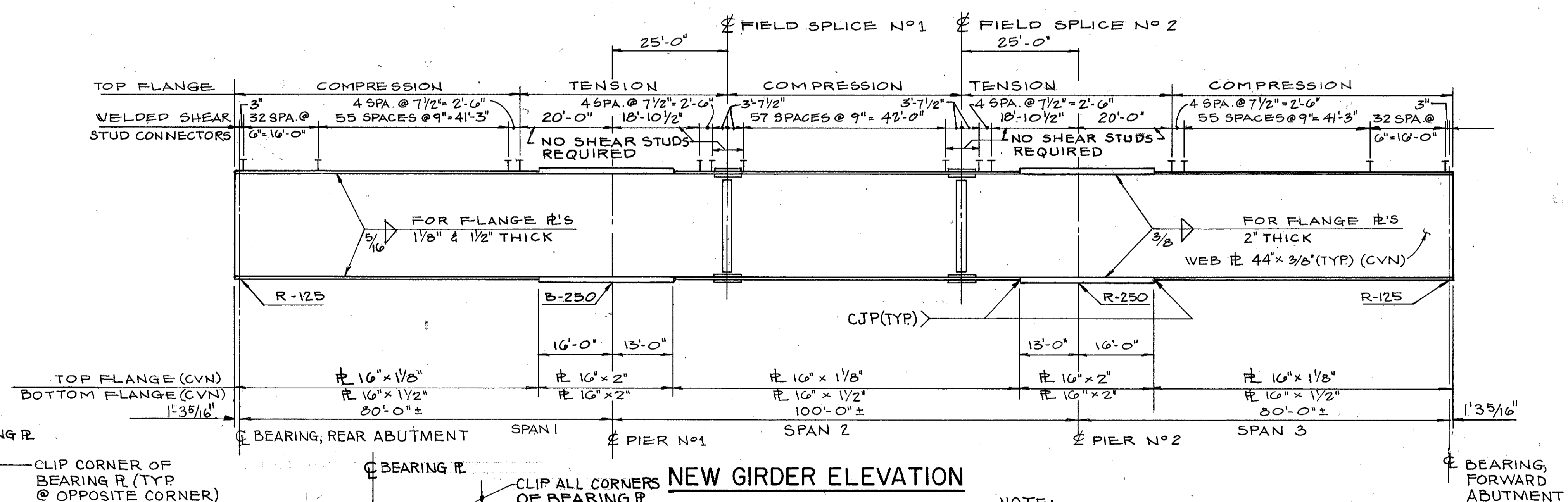
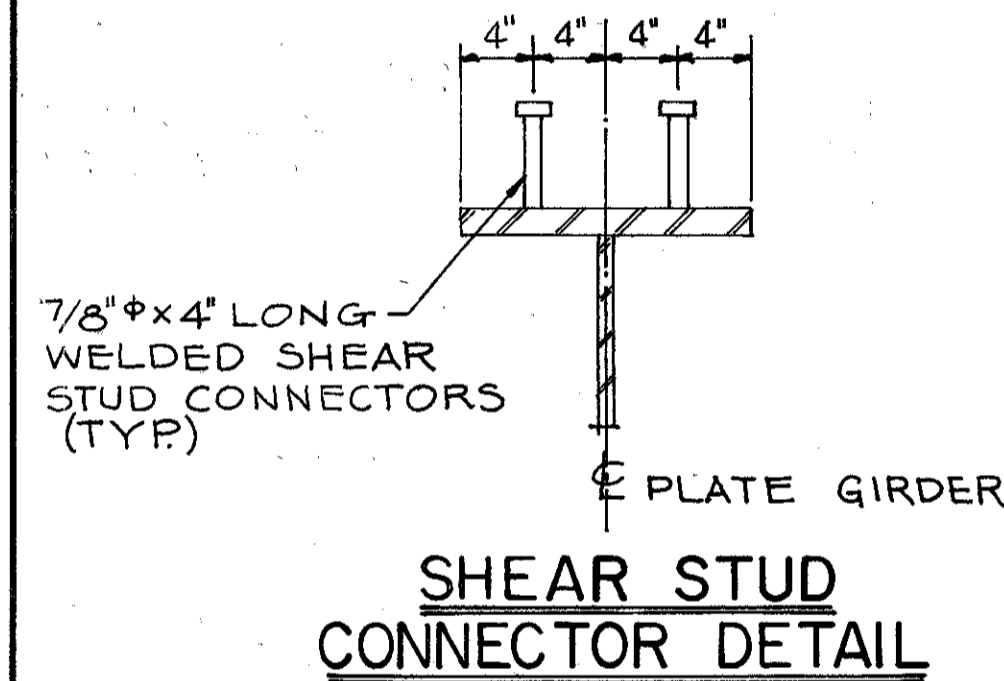
NOTE:
INTERMEDIATE STIFFENERS SHALL BE SPACED AT EQUAL DISTANCES (5'-0" MAX. SPACING) BETWEEN THE CROSSFRAMES UNLESS NOTED OTHERWISE ON THE PLAN (GIRDER A & H).



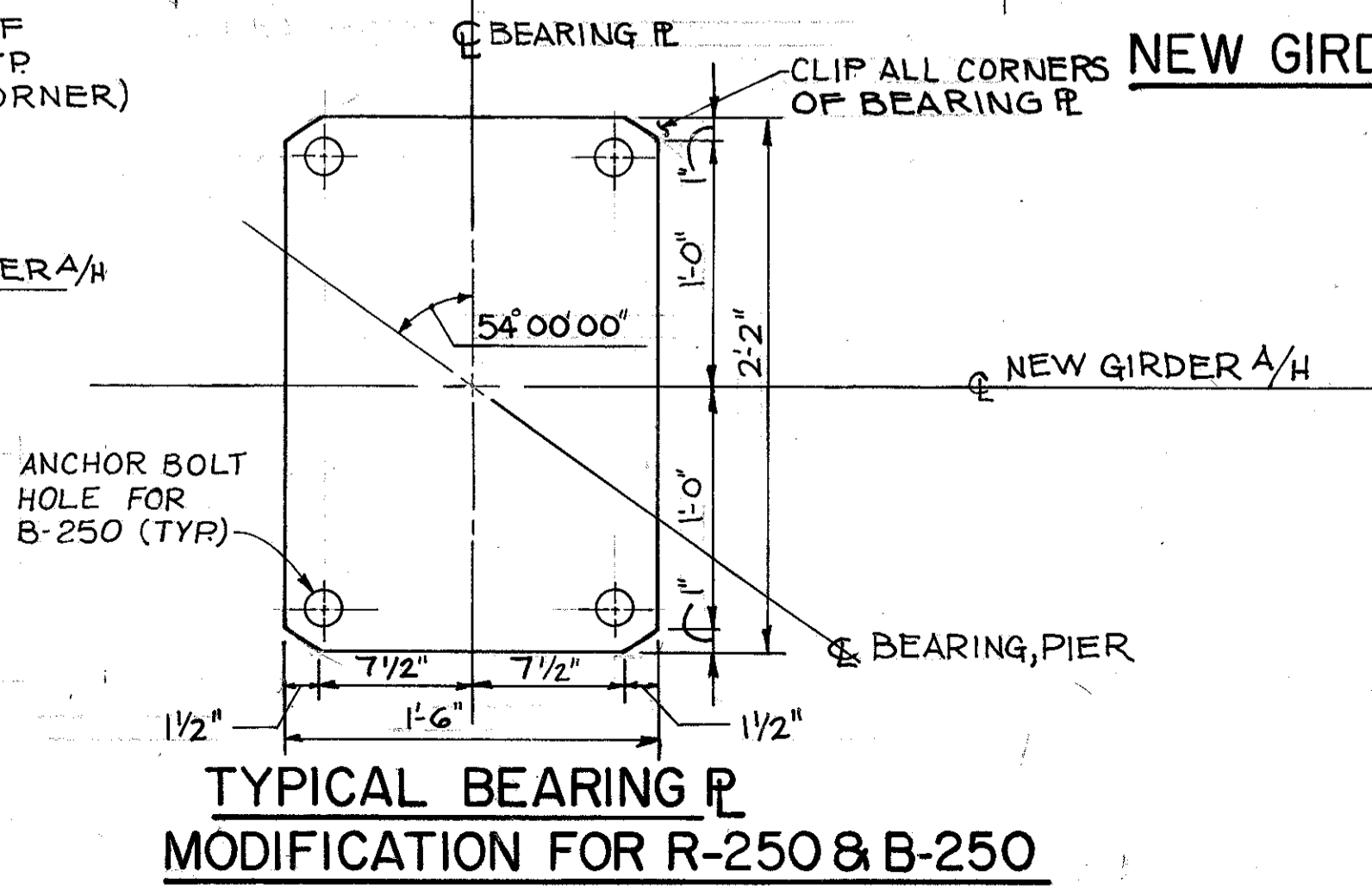
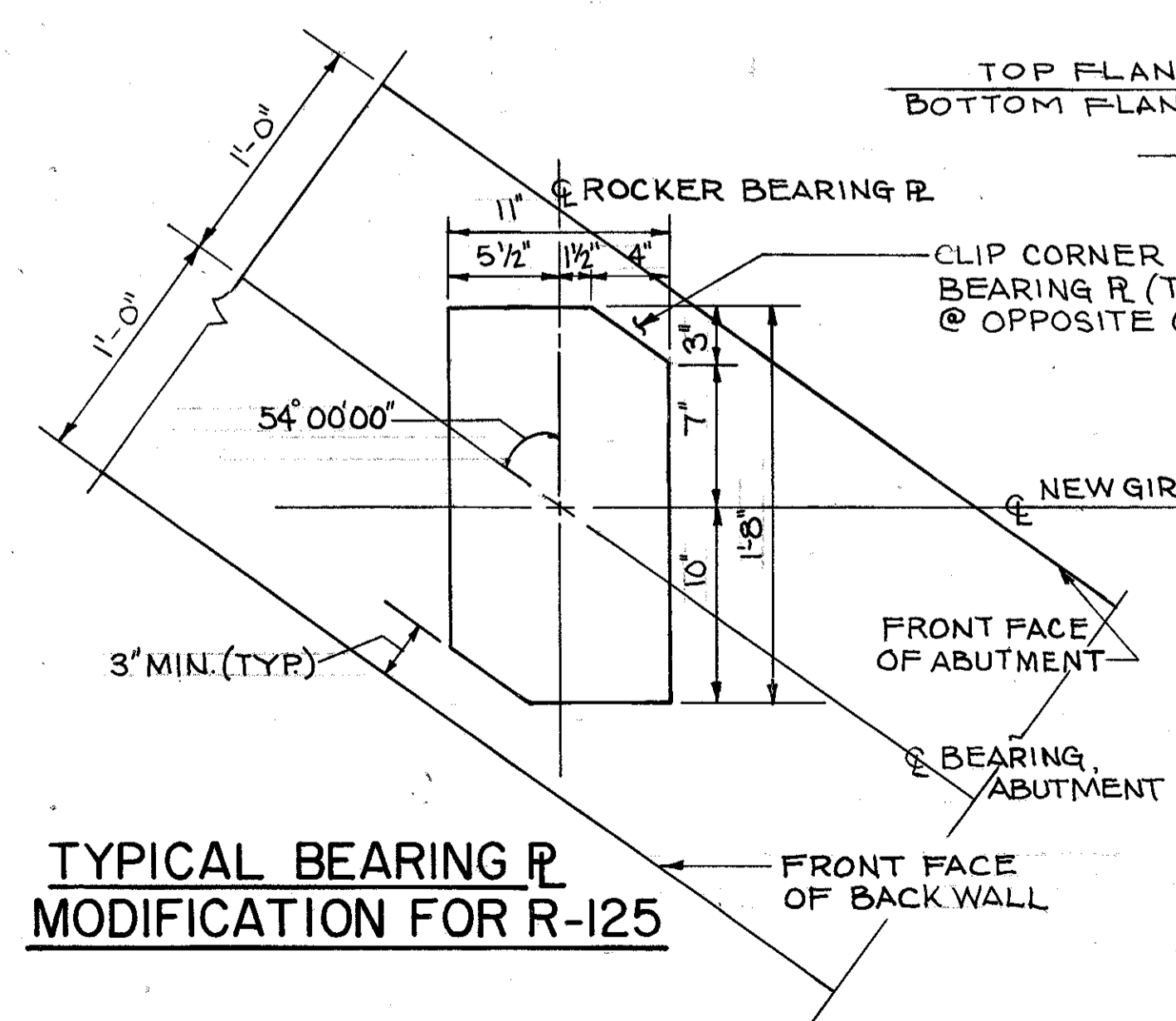
SPACING FOR CROSSFRAME NEAR GIRDER H. SHOWN-SPACING FOR CROSSFRAME NEAR GIRDER A SHALL BE THE SAME, BUT OPPOSITE HAND.

FRAMING PLAN

- NOTES:
- FOR ROCKER AND BOLSTER BEARING DETAILS, SEE OHIO STANDARD BRIDGE DRAWING RB-1-55.
 - WHERE A SHAPE OR PLATE IS DESIGNATED (CVN) THE MATERIAL SHALL MEET SPECIFIED MINIMUM NOTCH TOUGHNESS REQUIREMENTS AS SPECIFIED IN ITEM 711.01 OF CMS.
 - FOR DETAILS OF CROSSFRAMES, SEE SHEETS 13/18 AND 14/18.
 - FOR CAMBER DIAGRAM AND SCHEDULE, SEE SHEET 16/18.
 - FOR FIELD SPLICE DETAILS, SEE SHEET 13/18.
 - WELDED ATTACHMENT OF SUPPORTS FOR CONCRETE DECK FINISHING MACHINE MAY BE MADE TO AREAS OF THE FASCIA GIRDER FLANGES DESIGNATED "COMPRESSION". ATTACHMENTS SHALL NOT BE MADE TO AREAS DESIGNATED "TENSION". FILLETS WELDS TO COMPRESSION FLANGES SHALL BE NOT CLOSER THAN 1" FROM EDGE OF FLANGE, BE NOT MORE THAN 2" LONG, AND BE NOT SMALLER THAN THE MINIMUM SIZE REQUIRED BY AASHTO REQUIREMENTS.
 - THE TOP AND BOTTOM FLANGES OF THE NEW PLATE GIRDERS A & H ARE TO BE THE SAME AND SHALL BE SPliced AS SHOWN, AT CONTRACTOR'S OPTION AND AT NO ADDITIONAL COSTS, WELDED BUTT SPLICES IN TOP AND BOTTOM FLANGES NEAR THE FIELD SPLICE LOCATIONS MAY BE ELIMINATED BY EXTENDING THE THICKER FLANGE PLATES TO THE LOCATION OF FIELD SPLICE. THE FIELD SPLICE DETAILS SHALL BE MODIFIED TO ACCOMMODATE THE THICKER PLATES AND SHALL BE SUBMITTED TO THE ENGINEER FOR APPROVAL.
 - THE WEBS OF PLATE GIRDERS MAY BE SHOP SPliced AS REQUIRED BY THE AVAILABLE PLATE LENGTHS. THE LOCATIONS OF WEB SPLICES SHALL BE SUBMITTED TO THE ENGINEER FOR APPROVAL PRIOR TO ORDERING OF MATERIALS.



- NOTE:
- WELDED SHEAR STUD CONNECTORS SPACING FOR EXISTING GIRDERS SHALL BE THE SAME AS SHOWN FOR THE NEW GIRDER.
 - STIFFENERS ARE NOT SHOWN IN ELEVATION.



POLYTECH, INC. 12/18
CONSULTING ENGINEERS CLEVELAND, OHIO

FRAMING PLAN & GIRDER ELEVATION
BRIDGE NO. LAK-20-1939
OVER S.R.2. (EAST BOUND)

DESIGNED	DRAWN	TRACED	CHECKED	REVIEWED	DATE	REVISED
CT	CT	EPW	GA	BS	4/88	