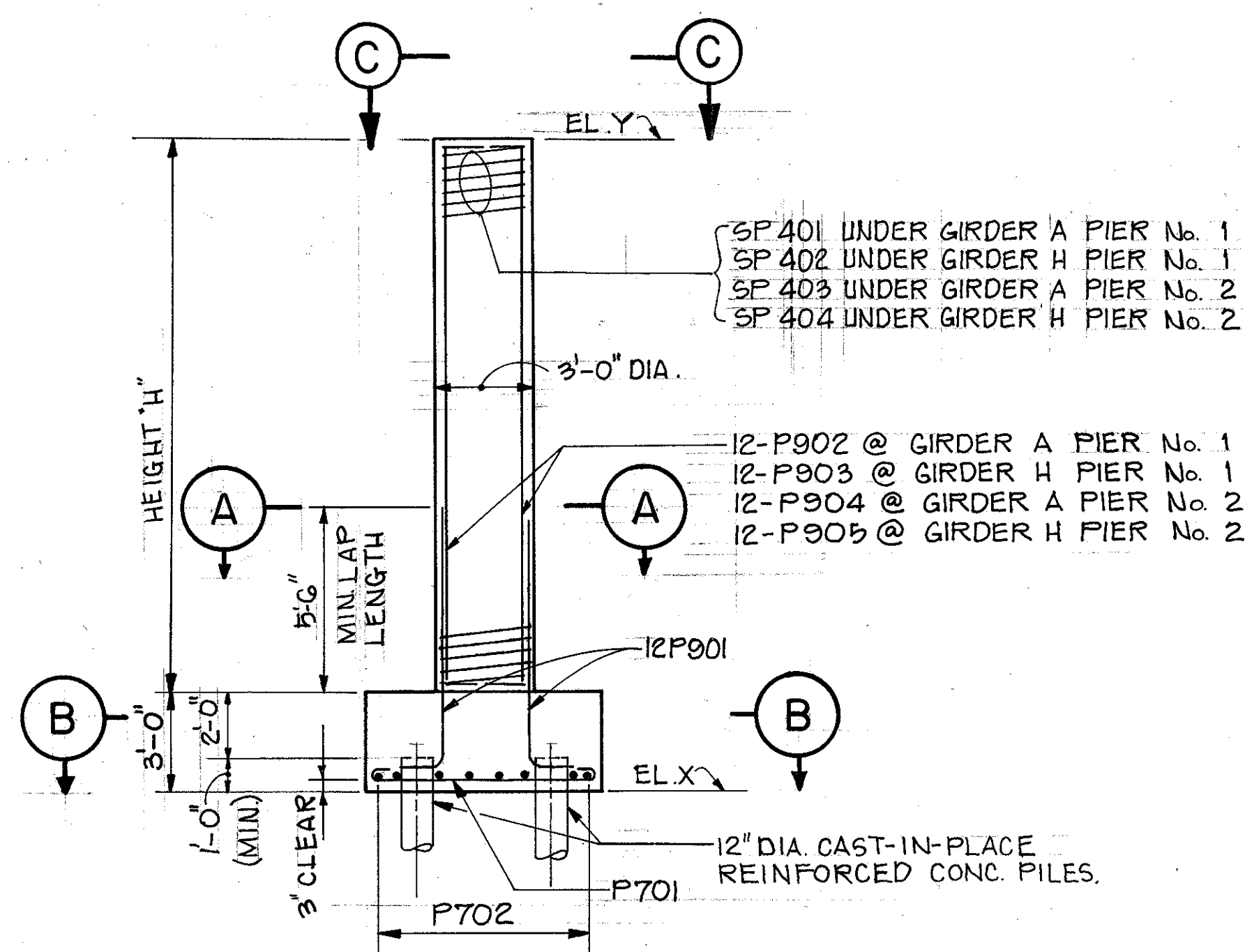
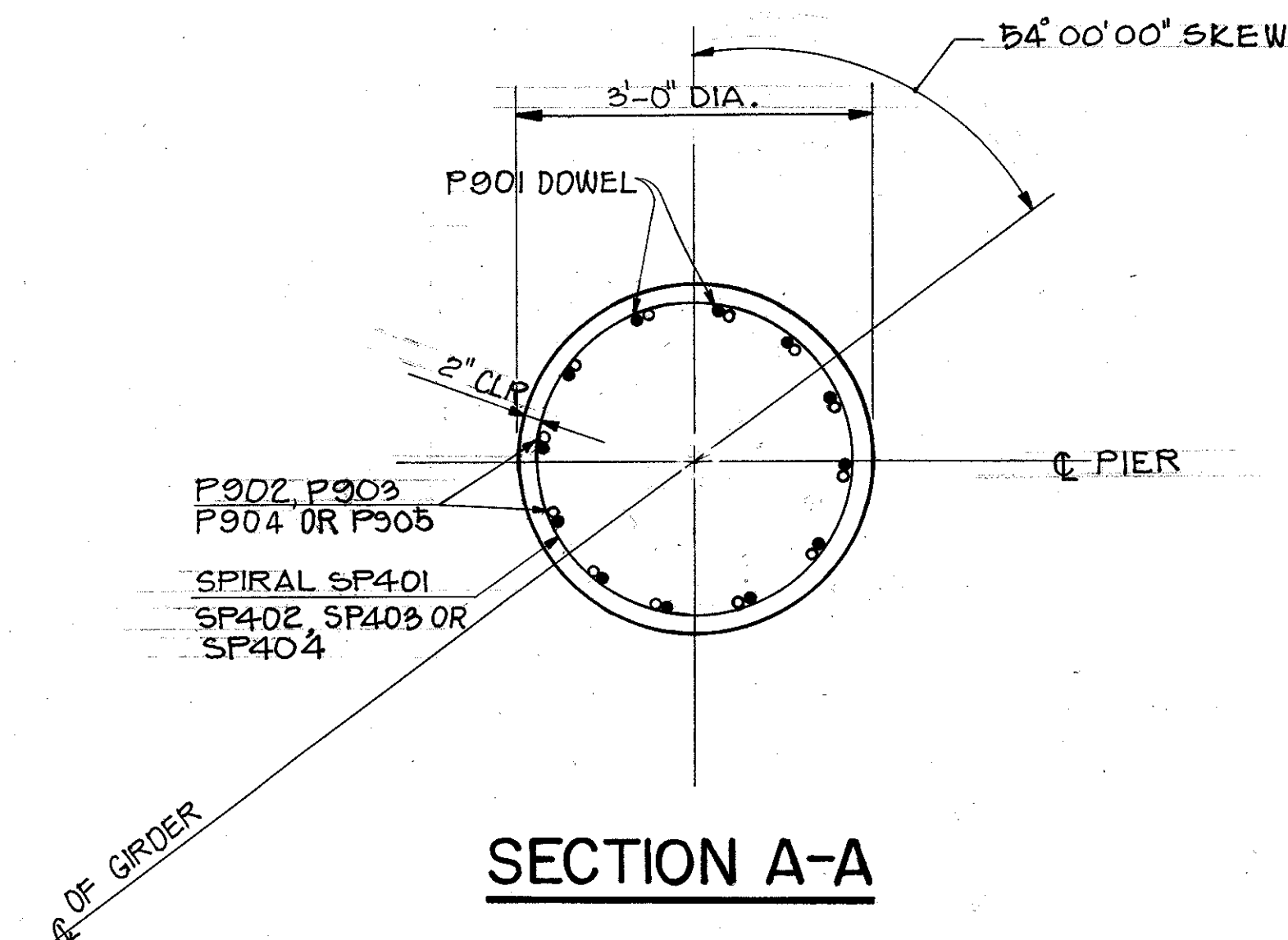


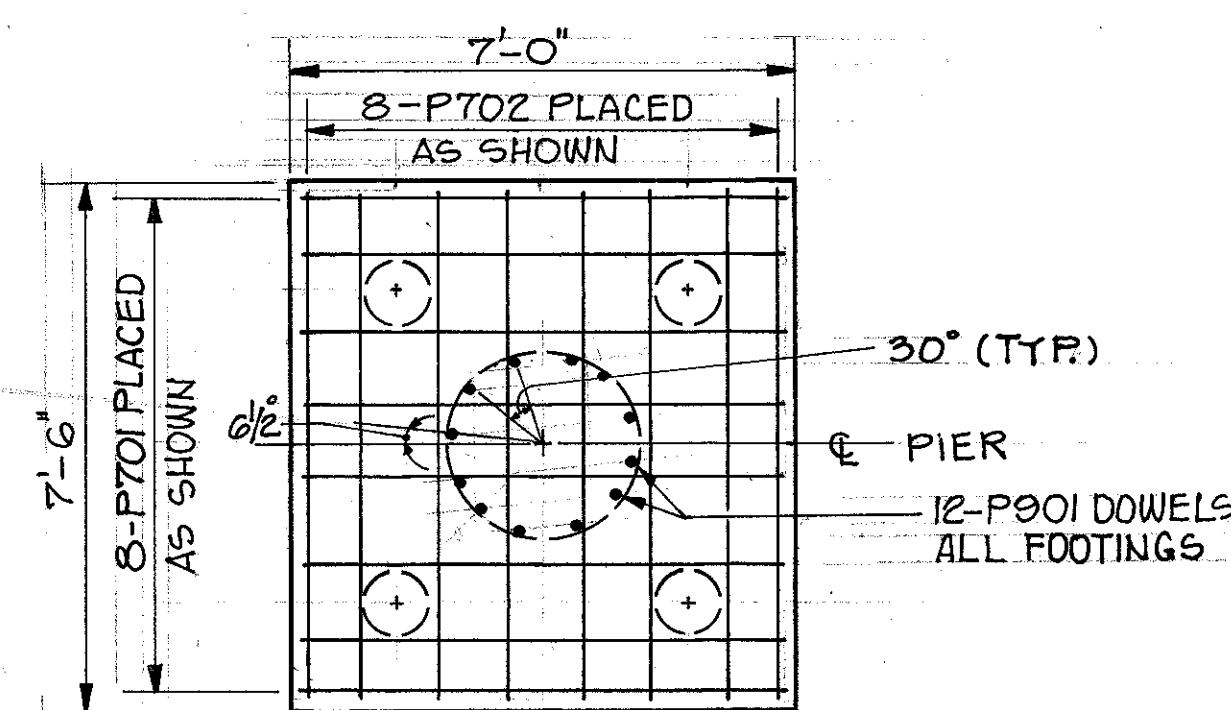
PLAN



ELEVATION



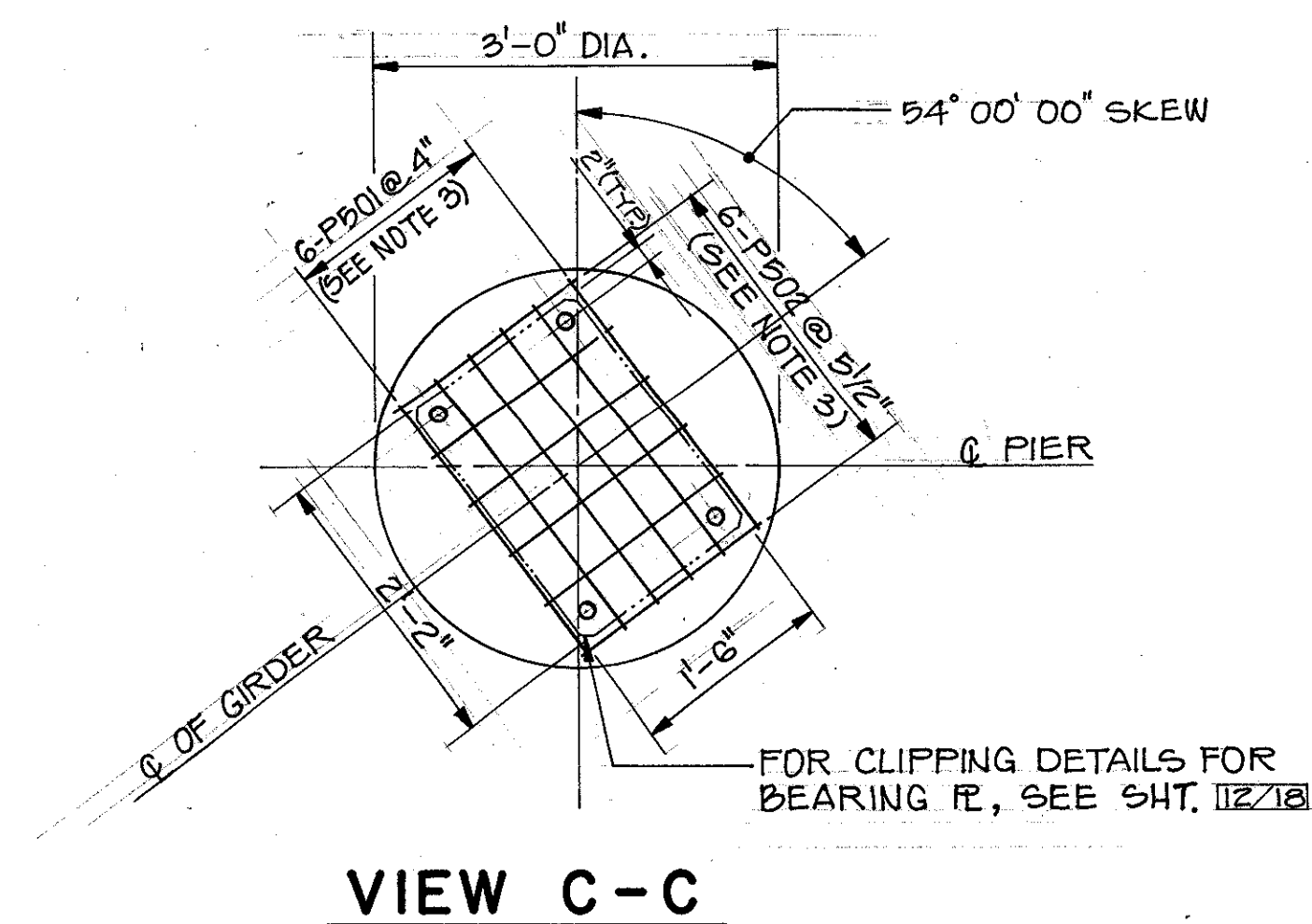
SECTION A-A



SECTION B-B

NOTE: FOOTING REINFORCEMENT SHOWN IS SAME FOR ALL FOOTING.

	PIER NO. 1		PIER NO. 2	
	GIRDER A	GIRDER H	GIRDER A	GIRDER H
EL. X	667.00 ±	667.00 ±	666.00 ±	666.00 ±
EL. Y	686.91	687.47	687.56	687.70
HEIGHT H	16.91 ±	17.47 ±	18.56 ±	18.70 ±



VIEW C-C

NOTE:

- FOR REINFORCEMENT SCHEDULE, SEE SHEET 17/18
- FOR DESIGN LOAD AND ADDITIONAL NOTES ON PILES, SEE NOTE 13 ON SHEET 3/18
- REINFORCING STEEL IN THE VICINITY OF BRIDGE SEAT SHALL BE SO PLACED AS TO AVOID INTERFERENCE WITH THE BEARING ANCHORS.

LEGEND

- (50) PILE NUMBER IN PIER NO. 1
- (58) PILE NUMBER IN PIER NO. 2

POLYTECH, INC.		11/18	
CONSULTING ENGINEERS		CLEVELAND, OHIO	
PIER NO. 1 & 2			
BRIDGE NO. LAK-20-1939 OVER S.R. 2. (EAST BOUND)			
DESIGNED	DRAWN	TRACED	CHECKED
LJ	GS	GS	CT
REVIEWED	DATE	REVISED	
BS	4/88		