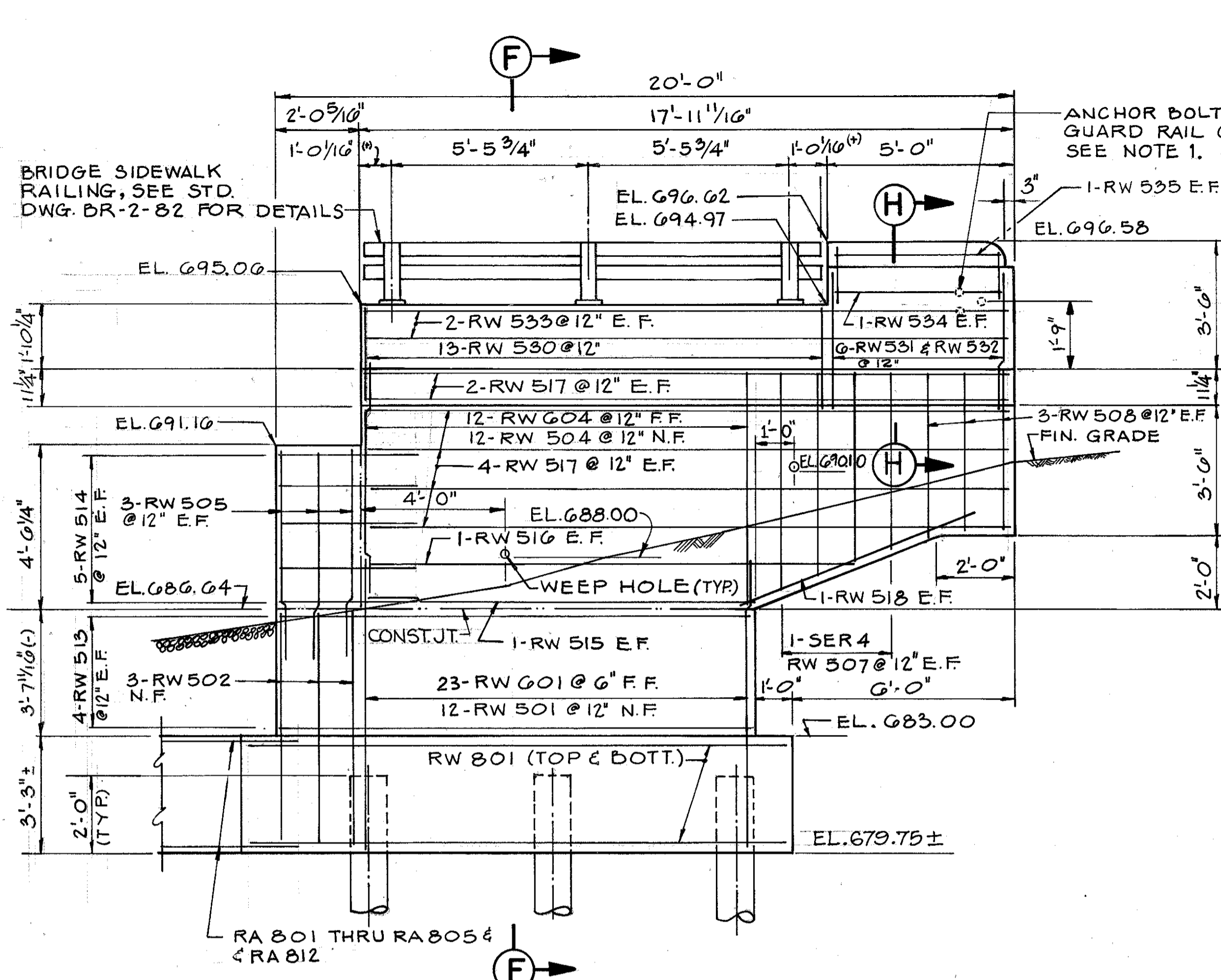
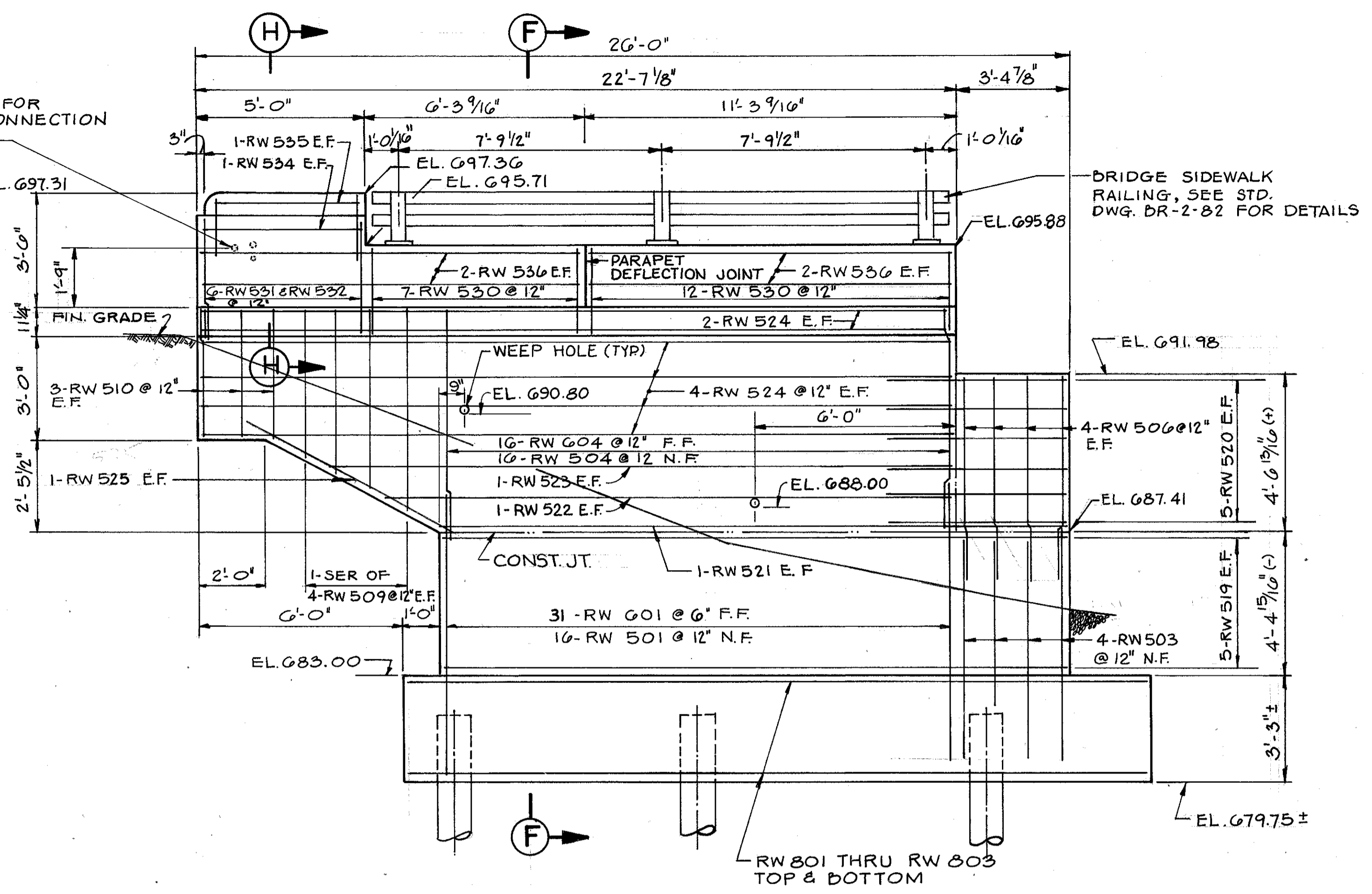


**LAKE COUNTY  
LAK-20-1939**

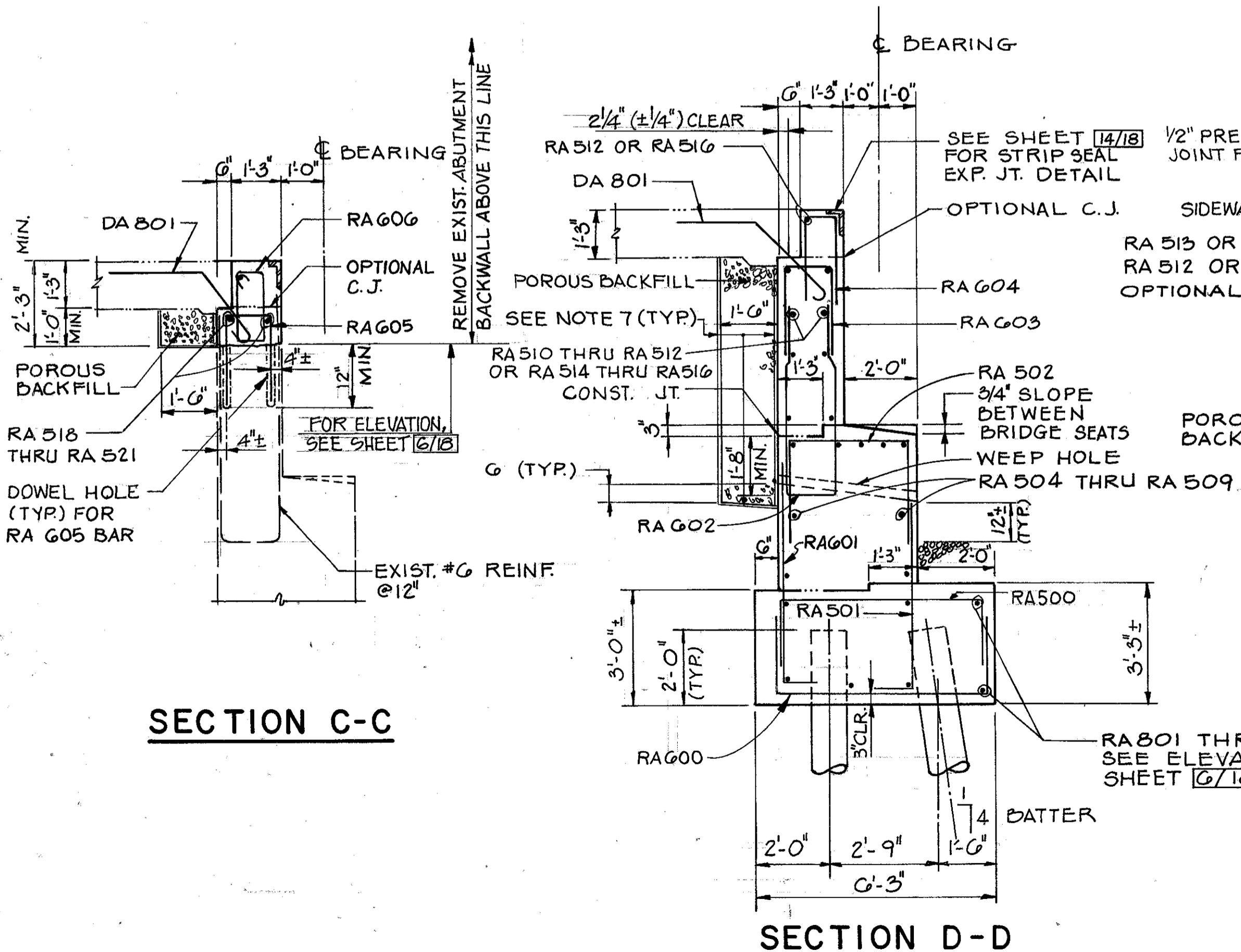


**ELEVATION A-A**



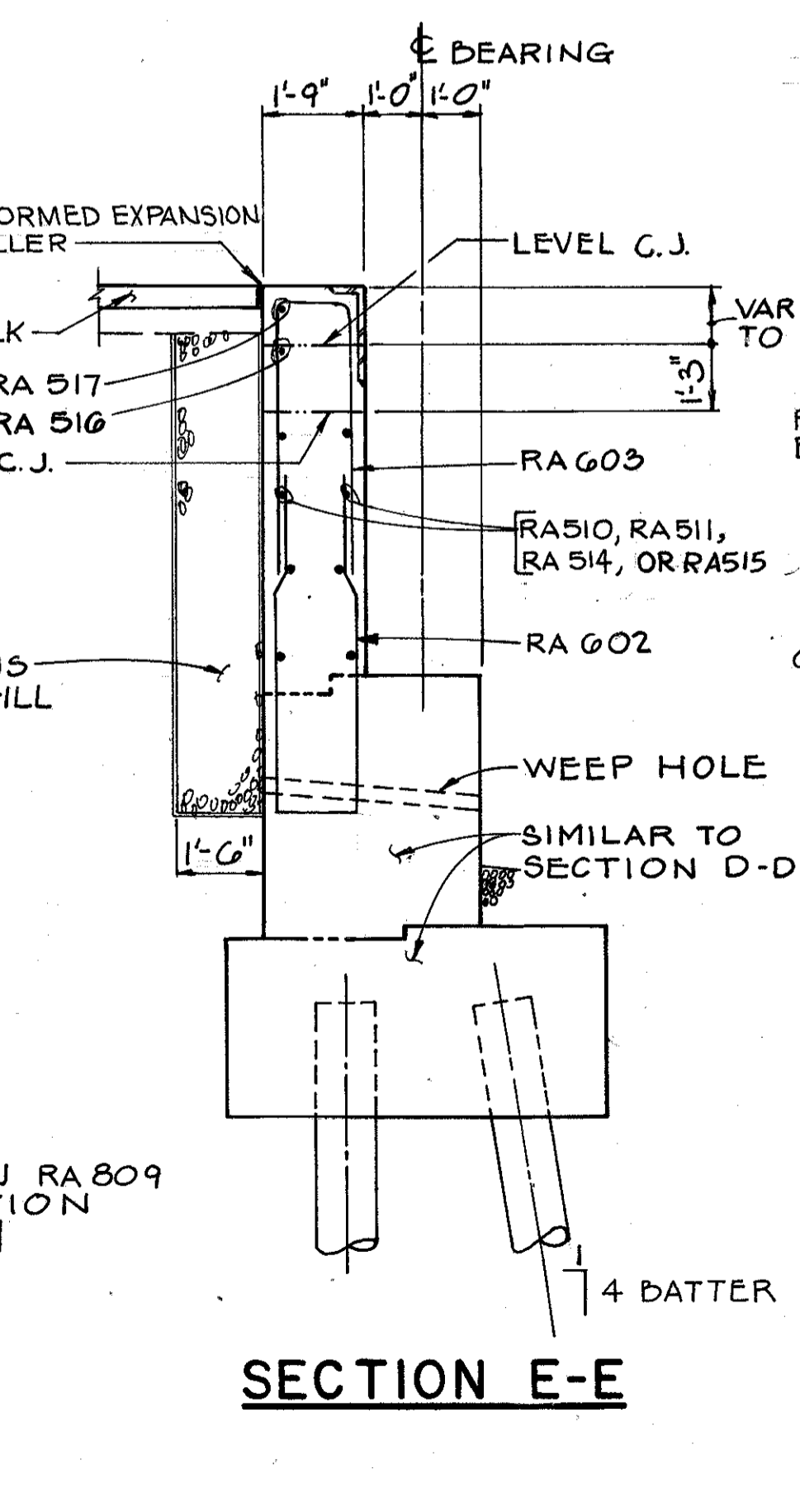
**ELEVATION B-B**

- NOTES:**
1. PROVIDE CONCRETE INSERT ANCHOR ASSEMBLY ON THE ROADWAY SIDE OF THE RAILING. FOR DETAILS, SEE STANDARD DRAWINGS BR-2-82 AND GR-1
  2. POROUS BACKFILL SHALL EXTEND UP TO THE LEVEL OF SUBGRADE AND Laterally TO THE ENDS OF ABUTMENT WINGWALLS.
  3. ALL PILES SHALL BE 12" DIAMETER, CAST-IN-PLACE REINFORCED CONCRETE PILES. FOR MAXIMUM DESIGN LOADS, SEE SHEET [3/18]
  4. CONSTRUCT ABUTMENT SIDEWALK FOR THE SOUTH WINGWALL IN STAGE III. FOR DETAILS OF STAGE CONSTRUCTION, SEE SHEET [4/18]
  5. FOR EXPANSION JOINT AT ABUTMENT, SEE SHEET [4/18]
  6. FOR REINFORCEMENT SCHEDULE, SEE SHEET [17/18]
  7. FILTER FABRIC FOR POROUS BACKFILL SHALL CONFORM TO ITEM 712.09, TYPE A AND SHALL BE INCLUDED WITH POROUS BACKFILL FOR PAYMENT. FILTER FABRIC AGAINST THE WALL FOR POROUS BACKFILL SHALL BE OPTIONAL.
  8. FOR ADDITIONAL NOTES, SEE SHEETS [6/18] AND [2/18] THRU [4/18]
  9. THE FOLLOWING MIN. BAR SPLICE LAP LENGTHS SHALL BE PROVIDED UNLESS OTHERWISE SHOWN:  
NO. 5 BARS = 1'-4"  
NO. 6 BARS = 1'-5"

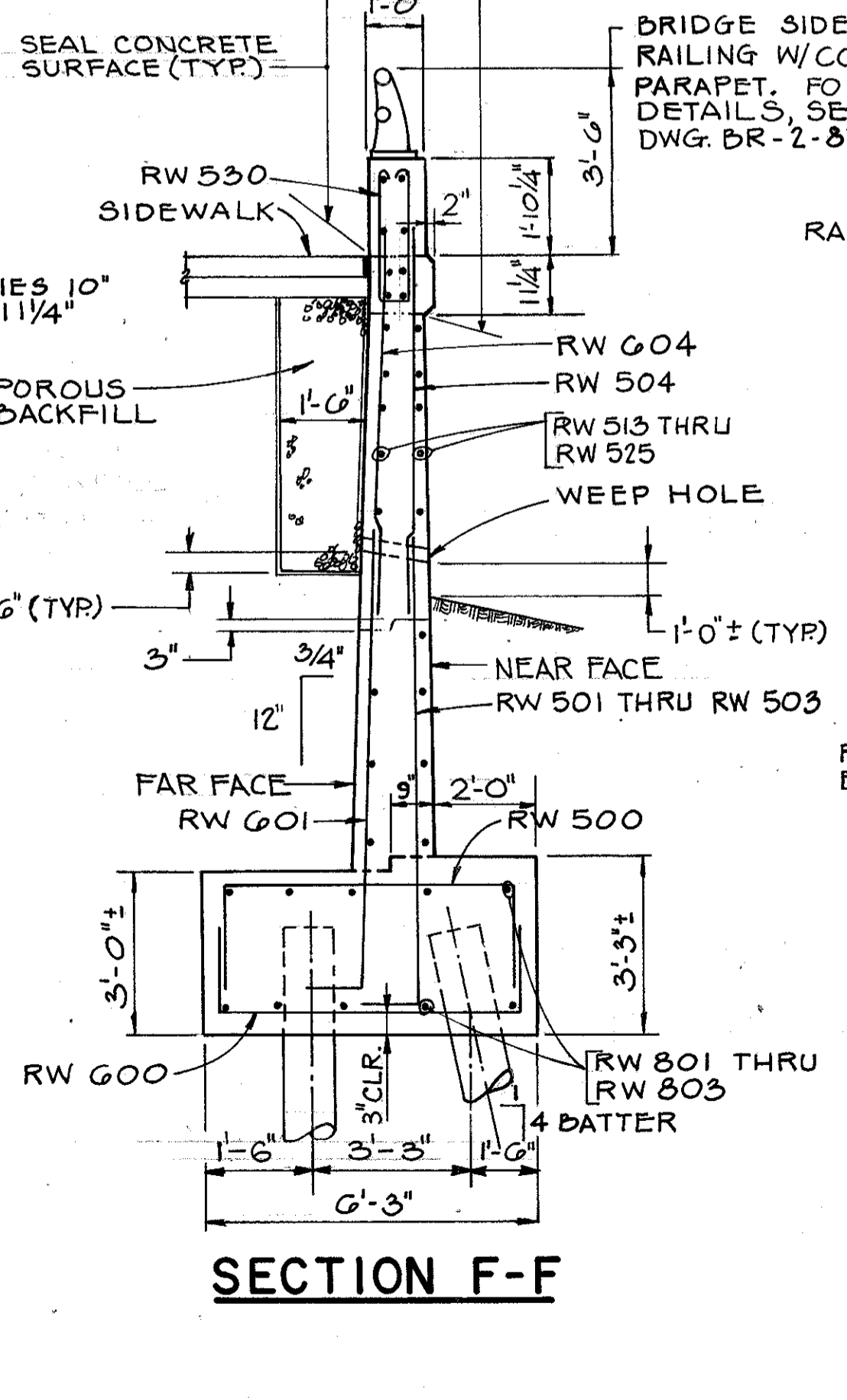


**SECTION C-C**

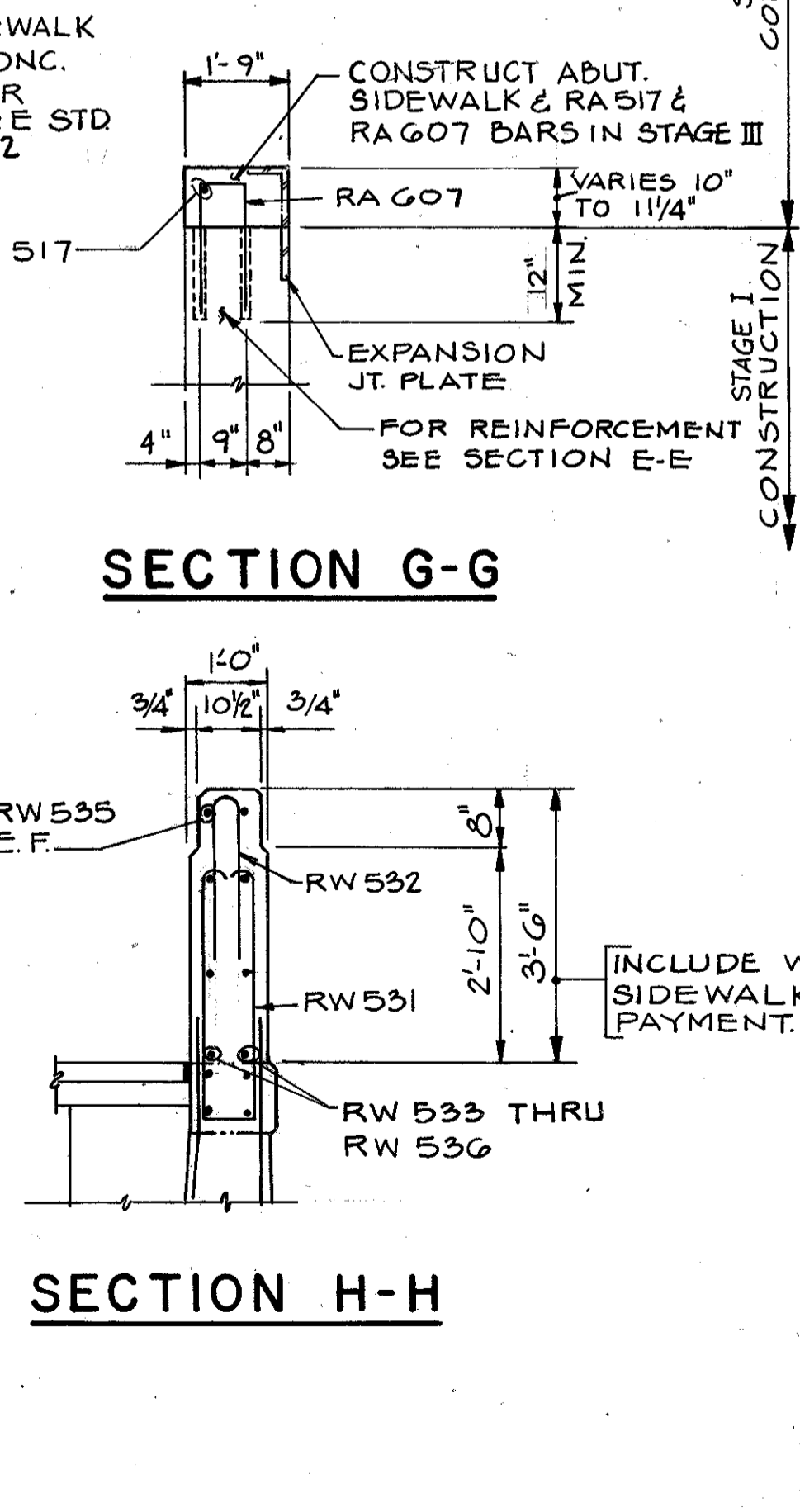
**SECTION D-D**



**SECTION E-E**

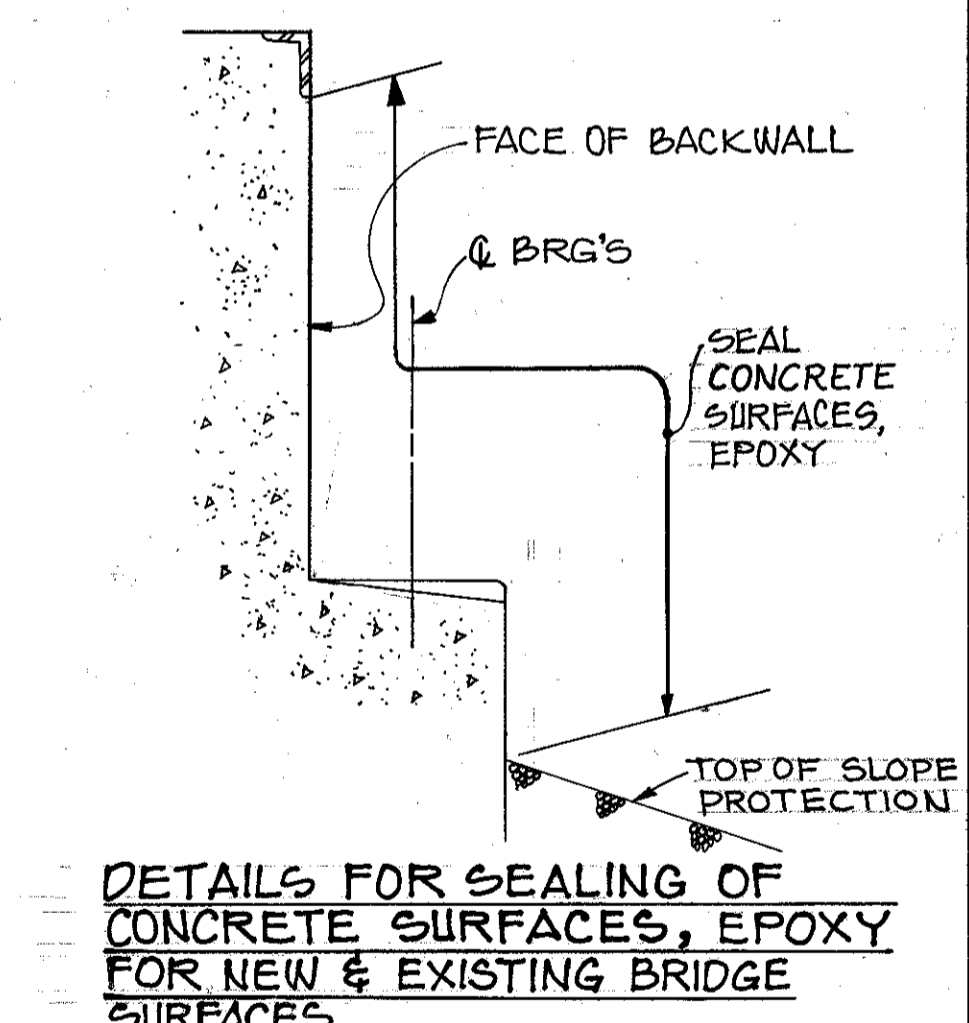


**SECTION F-F**



**SECTION G-G**

**SECTION H-H**



**DETAILS FOR SEALING OF CONCRETE SURFACES, EPOXY FOR NEW & EXISTING BRIDGE SURFACES**

<b>POLYTECH, INC.</b>		7/18
CONSULTING ENGINEERS		CLEVELAND, OHIO
<b>REAR ABUTMENT WINGWALLS &amp; SECTIONS</b>		
BRIDGE NO. LAK-20-1939 OVER S.R.2. (EAST BOUND)		
DESIGNED	DRAWN	TRACED
CT	EPW	-
CHECKED	REVIEWED	DATE
GA	BS	4/88