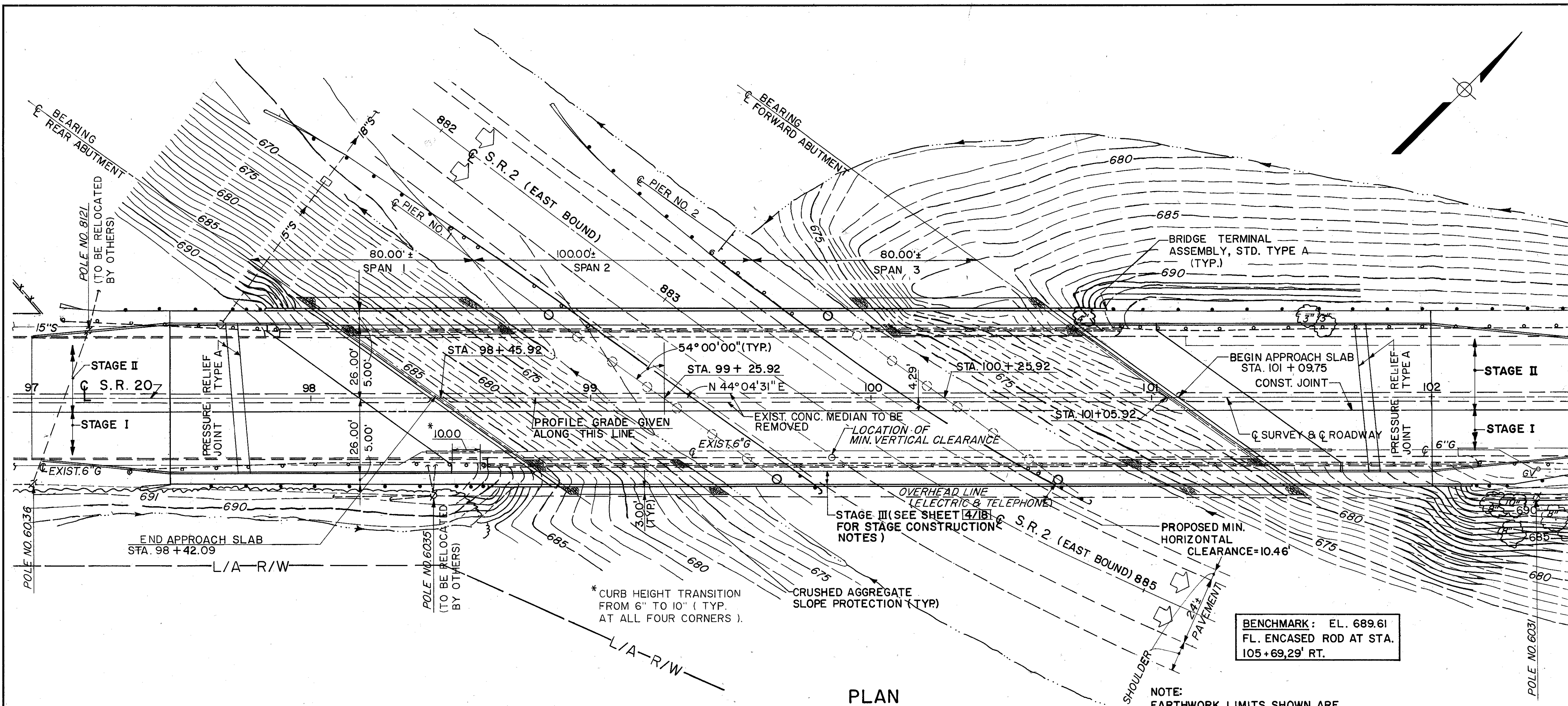


FHWA REGION	STATE	PROJECT
5	OHIO	

15
32

LAKE COUNTY
LAK-20-19.39



PLAN

EXISTING STRUCTURE

TYPE: 3 SPAN CONTINUOUS WELDED PLATE GIRDER WITH REINFORCED CONCRETE DECK & SUBSTRUCTURE
 SPAN LENGTHS: 80'-0", 100'-0" AND 80'-0" CTR. TO CTR. BEARING.
 ROADWAY WIDTH: 43'-0" F/F 2'-3" SAFETY CURBS.
 WEARING SURFACE: 1" MONOLITHIC CONCRETE.
 APPROACH SLABS: SPECIAL (25'-0" LONG)
 ALIGNMENT: TANGENT
 SKEW ANGLE: 54°00'00" RIGHT FORWARD
 STRUCTURE FILE NO.: 4302346

PROPOSED STRUCTURE

TYPE: 3 SPAN CONTINUOUS WELDED PLATE GIRDERS WITH REINFORCED CONCRETE DECK & SUBSTRUCTURE
 SPAN LENGTHS: 80'-0", 100'-0" AND 80'-0" CTR. TO CTR. OF BEARING.
 ROADWAY WIDTH: 52'-0" F/F OF CURB WITH 2'-5" SIDEWALKS AND BRIDGE SIDEWALK RAILING AS PER BR-2-82.
 DESIGN LOADING: HS20-44 CASE II & ALTERNATE MILITARY LOADING.
 SKEW ANGLE: 54°00'00" RIGHT FORWARD.
 ALIGNMENT: TANGENT
 APPROACH SLABS: AS-1-8(25'-0" LONG)
 WEARING SURFACE: 1" MONOLITHIC CONCRETE
 SUPERELEVATION: NONE

FOUNDATION DATA

ALL PILES SHALL BE 12" CAST-IN-PLACE REINFORCED CONCRETE. ESTIMATED AVERAGE PAY LENGTHS:
 ABUTMENTS=53'
 PIERS= 50'

TRAFFIC DATA

CURRENT ADT (1988) = 21,400
 DESIGN YEAR ADT (2008) = 26,540
 ADTT(2008) = 1062

REVIEWED BY BURGESS & NIPLE, LTD.
M.P.B. 10/7/88

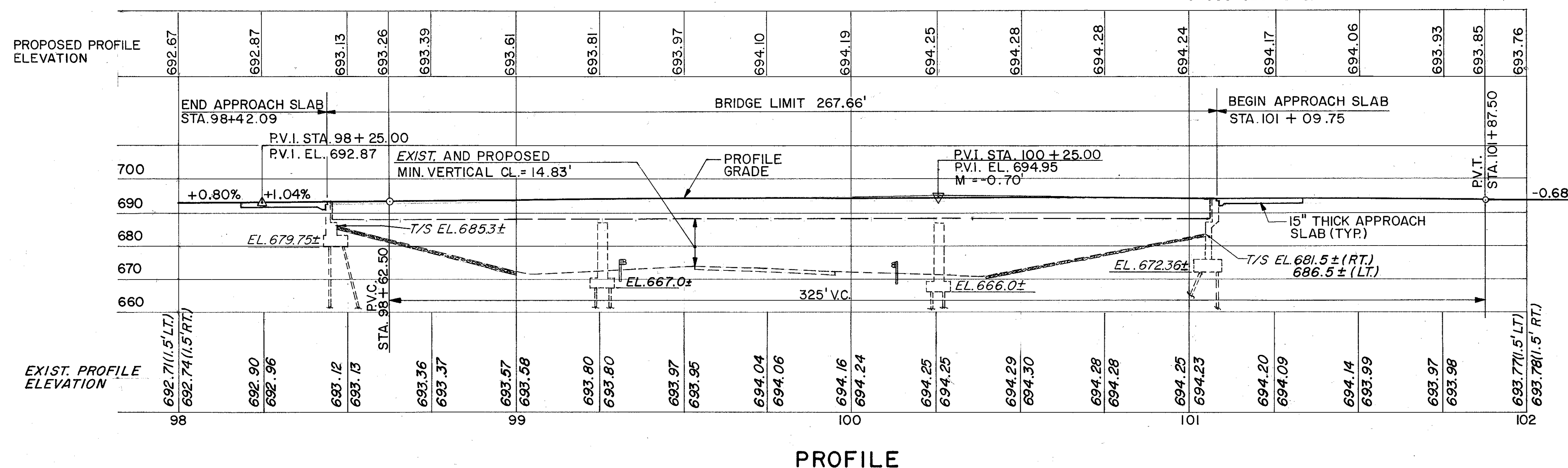
POLYTECH, INC. 1/18
CONSULTING ENGINEERS CLEVELAND, OHIO

SITE PLAN

BRIDGE NO. LAK - 20 -1939
OVER S.R. 2 (EASTBOUND)

LAKE COUNTY STA. 98 + 42.09 TO
SCALE: 0 10' 20'

DESIGNED	DRAWN	TRACED	CHECKED	REVIEWED	DATE	REVISED
CT	DCP	GS	GA	BS	4/88	



PROFILE