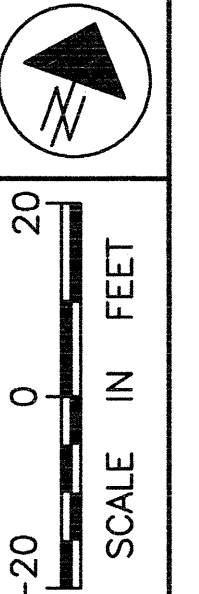
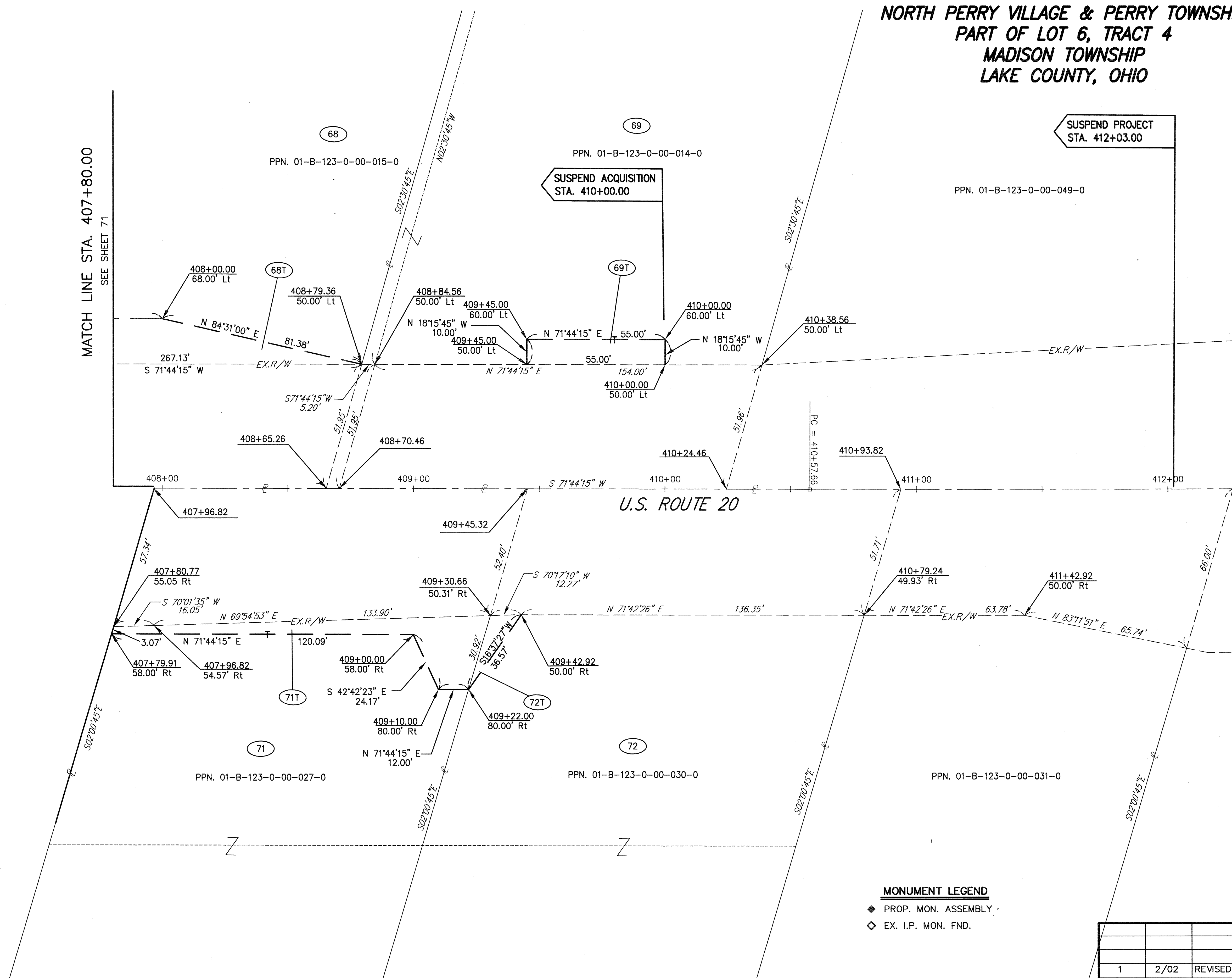


**PART OF LOT 91
NORTH PERRY VILLAGE & PERRY TOWNSHIP
PART OF LOT 6, TRACT 4
MADISON TOWNSHIP
LAKE COUNTY, OHIO**



MATCH LINE STA. 407+80.00
SEE SHEET 71



SUSPEND PROJECT
STA. 412+03.00

SUSPEND ACQUISITION
STA. 410+00.00

MONUMENT LEGEND

- ◆ PROP. MON. ASSEMBLY
- ◇ EX. I.P. MON. FND.

RECEIVED
MAR 07 2002
PRODUCTION DEPT.

H:\1998\98404.dwg\trwsh3.dwg 03/08/2000 12:58:14 PM EST

FEDERAL
PROJECT NO.

PID NO.
20343

RIGHT OF WAY PLAN U.S. 20
STA. 407+80.00 TO STA. 412+03.00

LAK - 20 - 18.72

REV	DATE	DESCRIPTION
1	2/02	REVISED DISTANCE ON PARCEL 68
PLAN COMPLETED:		

73/87

427
441