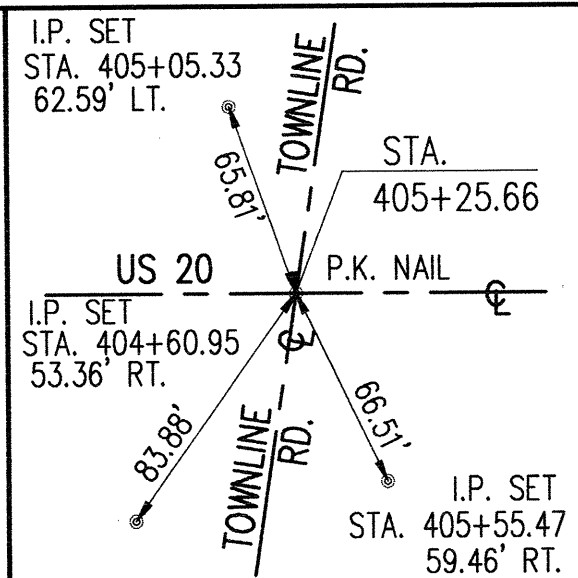


**PART OF LOT 91
NORTH PERRY VILLAGE & PERRY TOWNSHIP
PART OF LOT 6, TRACT 4
MADISON TOWNSHIP
LAKE COUNTY, OHIO**

SEE SHEET NO. 79



NOTE: EX. TRAFFIC EASEMENT OVERLAPS PARCEL 68T BY 0.0059 ACRES.

EX. SANITARY EASEMENTS OVERLAP PARCEL 68T 0.1444 ACRES.

OVERLAP TABLE			
PARCEL NO.	TOTAL AREA	EASEMENT	AREA IN OVERLAP
68WDV	0.009 AC	EX. SAN. (1)	0.0065 ACRES
68WDV	0.009 AC	EX. SAN. (2)	0.0031 ACRES
68WDV	0.009 AC	EX. TRAFFIC	0.0017 ACRES

PROP. R/W CURVE DATA

R = 35.00'
L = 64.68'
T = 46.35'
Δ = 105°53'01"
C = 55.86'
S55°19'14"E

PPN. 01-B-123-0-00-015-0

NOTE: EX. TRAFFIC EASEMENT OVERLAPS PARCEL 63WDV BY 0.0062 ACRES AND PARCEL 63T BY 0.0071 ACRES.

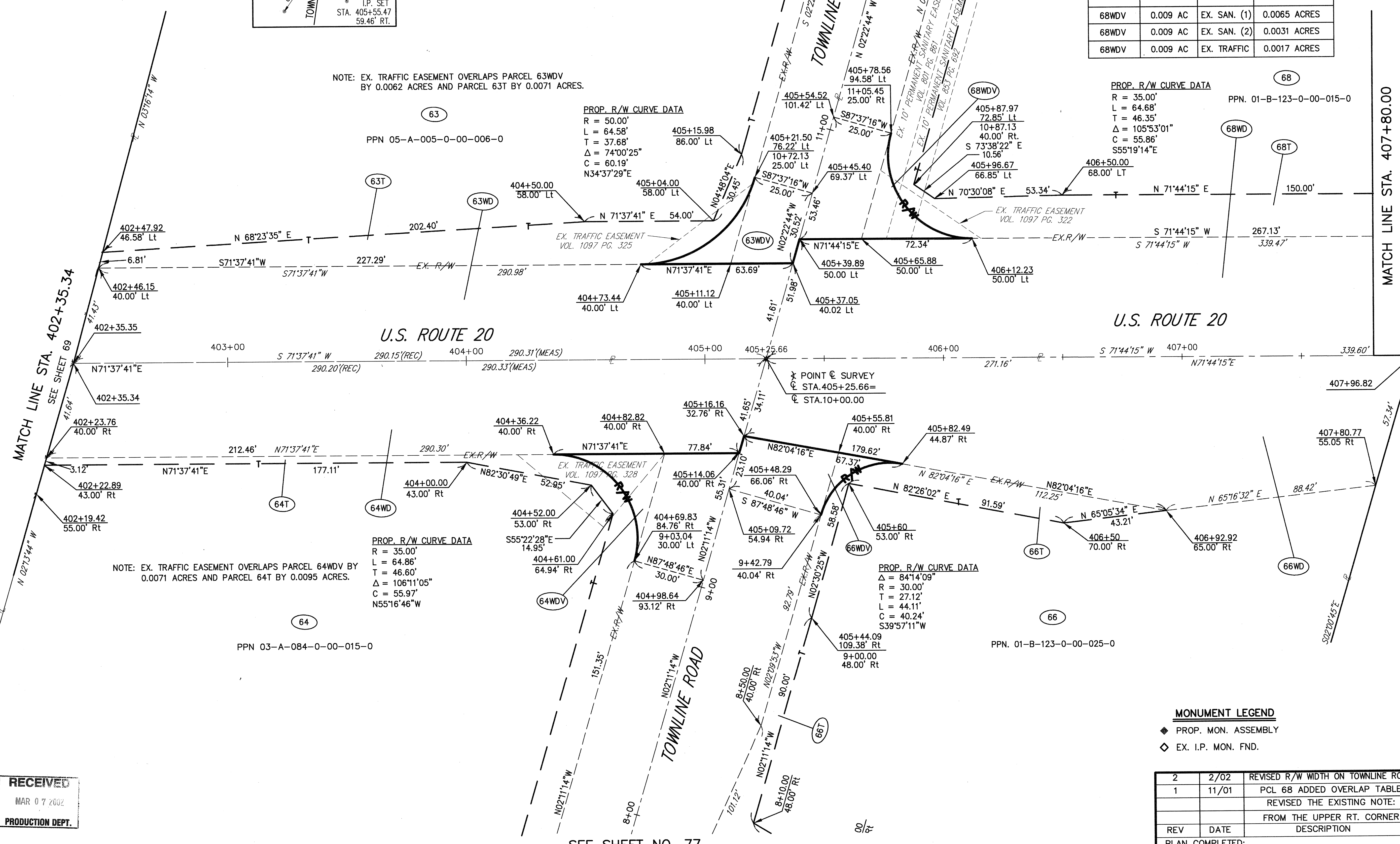
PROP. R/W CURVE DATA

R = 50.00'
L = 64.58'
T = 37.68'
Δ = 74°00'25"
C = 60.19'
N34°37'29"E

PPN 05-A-005-0-00-006-0

U.S. ROUTE 20

U.S. ROUTE 20



NOTE: EX. TRAFFIC EASEMENT OVERLAPS PARCEL 64WDV BY 0.0071 ACRES AND PARCEL 64T BY 0.0095 ACRES.

PROP. R/W CURVE DATA

R = 35.00'
L = 64.86'
T = 46.60'
Δ = 106°11'05"
C = 55.97'
N55°16'46"W

PPN 03-A-084-0-00-015-0

PROP. R/W CURVE DATA

Δ = 84°14'09"
R = 30.00'
T = 27.12'
L = 44.11'
C = 40.24'
S39°57'11"W

PPN. 01-B-123-0-00-025-0

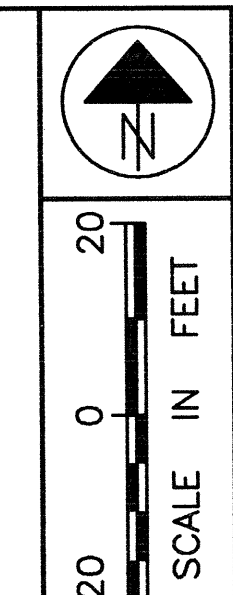
MONUMENT LEGEND

- ◆ PROP. MON. ASSEMBLY
- ◇ EX. I.P. MON. FND.

REV	DATE	DESCRIPTION
2	2/02	REVISED R/W WIDTH ON TOWNLINE ROAD
1	11/01	PCL 68 ADDED OVERLAP TABLE
		REVISED THE EXISTING NOTE:
		FROM THE UPPER RT. CORNER
		DESCRIPTION

RECEIVED
MAR 07 2002
PRODUCTION DEPT.

SEE SHEET NO. 77



FEDERAL PROJECT NO.
20343

RIGHT OF WAY PLAN U.S. 20
STA. 402+35.34 TO STA. 407+80.00

LAK - 20 - 18.72

71/87
425
441

H:\1998\98404\dwg\trwsh2.dwg 03/08/2000 12:50:58 PM EST