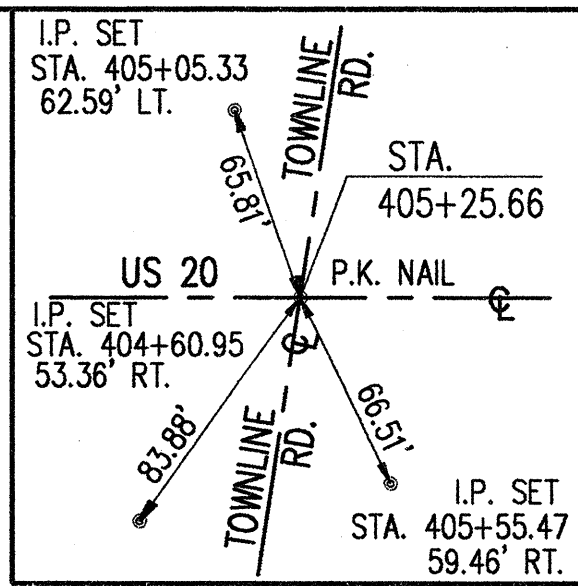
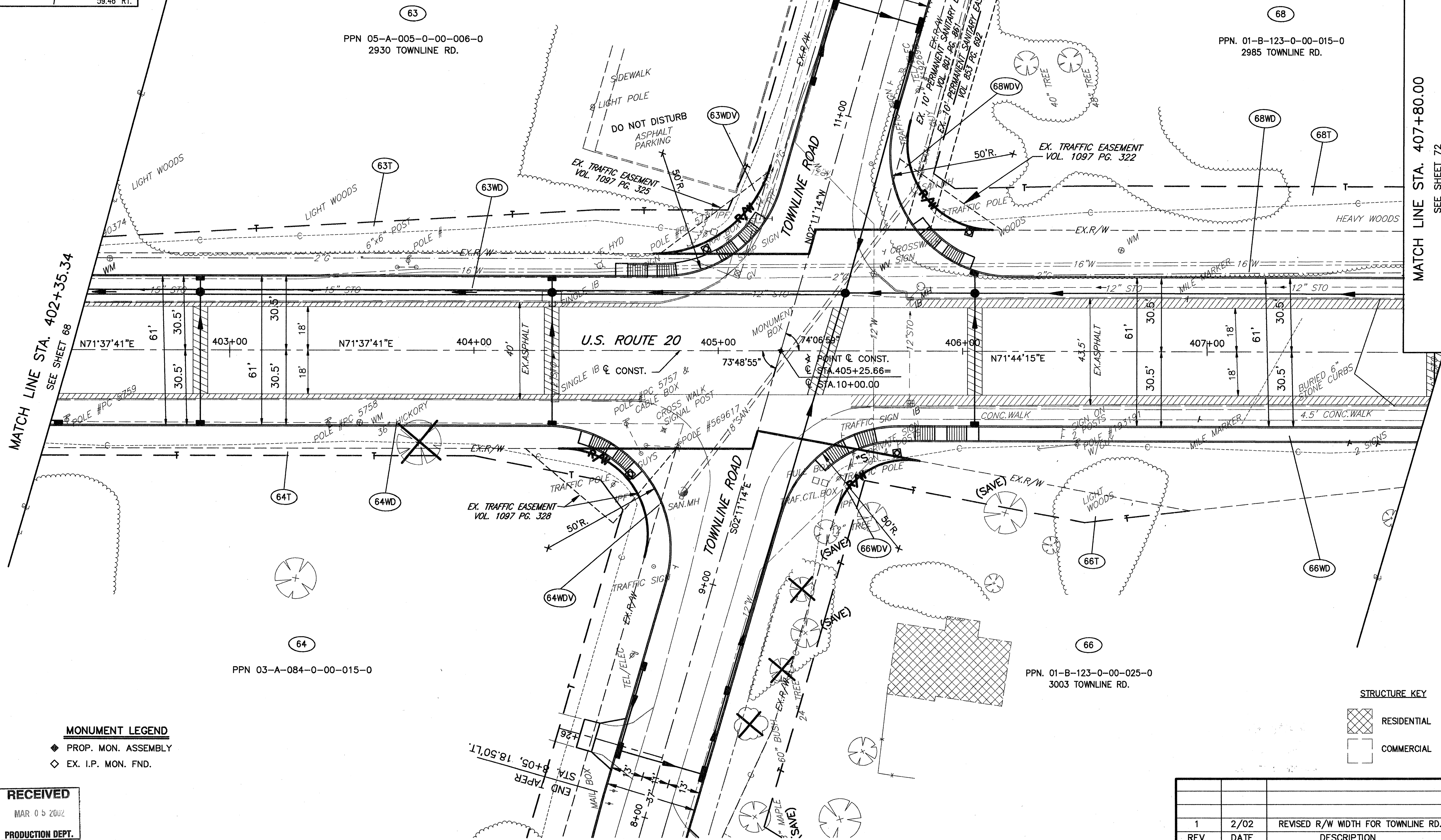
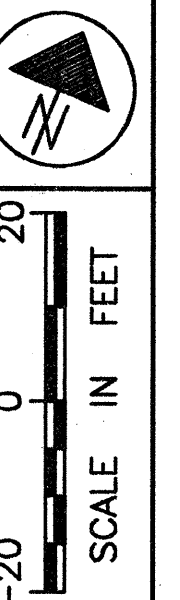


H:\1998\98404\dwg\trwplan2.dwg 03/08/2000 11:06:27 AM EST



**PART OF LOT 91  
NORTH PERRY VILLAGE & PERRY TOWNSHIP  
PART OF LOT 6, TRACT 4  
MADISON TOWNSHIP  
LAKE COUNTY, OHIO**

SEE SHEET 78



SEE SHEET 76

**RECEIVED**  
MAR 05 2002  
PRODUCTION DEPT.

1	2/02	REVISED R/W WIDTH FOR TOWNLINE RD.	70/87
REV	DATE	DESCRIPTION	424
PLAN COMPLETED:			441

FEDERAL PROJECT NO. 20343  
RIGHT OF WAY PLAN U.S. 20  
STA. 402+35.34 TO STA. 407+80.00  
LAK - 20 - 18.72