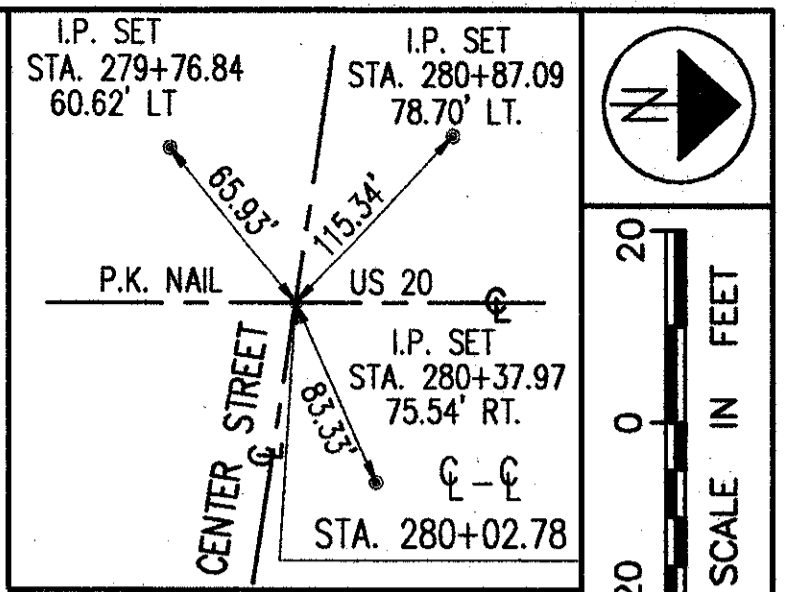
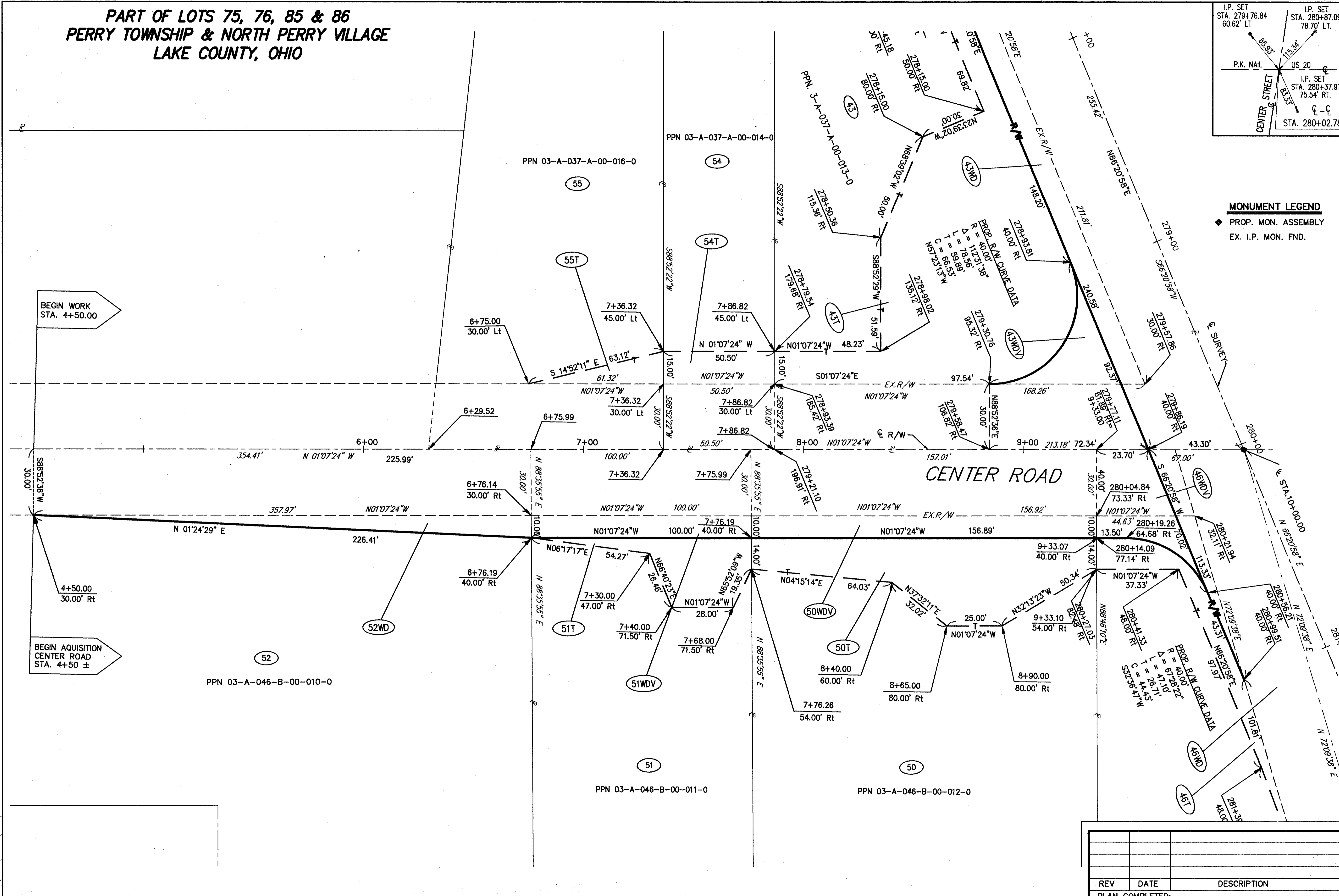


**PART OF LOTS 75, 76, 85 & 86
PERRY TOWNSHIP & NORTH PERRY VILLAGE
LAKE COUNTY, OHIO**



MONUMENT LEGEND
 ◆ PROP. MON. ASSEMBLY
 EX. I.P. MON. FND.



FEDERAL PROJECT NO. 20343
 PID NO. 20343
 RIGHT OF WAY PLAN CENTER RD.
 STA. 4+50.00 TO STA. 10+00.00
 LAK - 20 - 18.72
 65/87
 419
 441

REV	DATE	DESCRIPTION

PLAN COMPLETED:

H:\1998\98404\DWG\CRW5H5.DWG