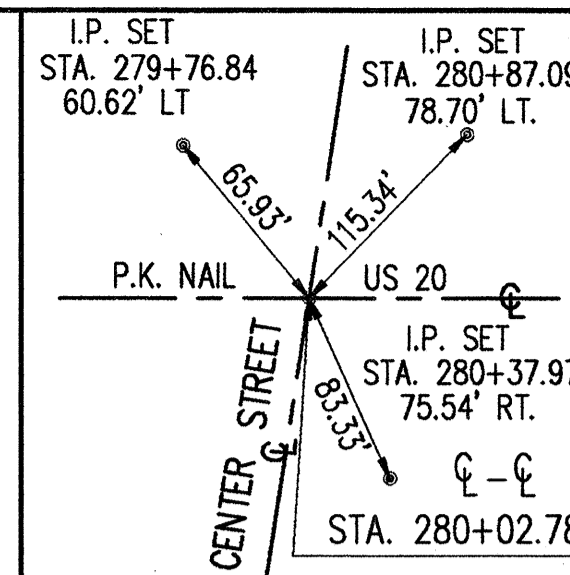


**PART OF LOTS 75, 76, 85 & 86  
PERRY TOWNSHIP & NORTH PERRY VILLAGE  
LAKE COUNTY, OHIO**

SEE SHEET NO. 67

**MONUMENT LEGEND**

- ◆ PROP. MON. ASSEMBLY
- ◇ EX. I.P. MON. FND.



EXISTING ROAD EASEMENT OVERLAPS PARCEL 44WD1 BY 0.0034 ACRES AND PARCEL 44WDV BY 0.0011 ACRES.

PPN 03-A-038-0-00-007-0

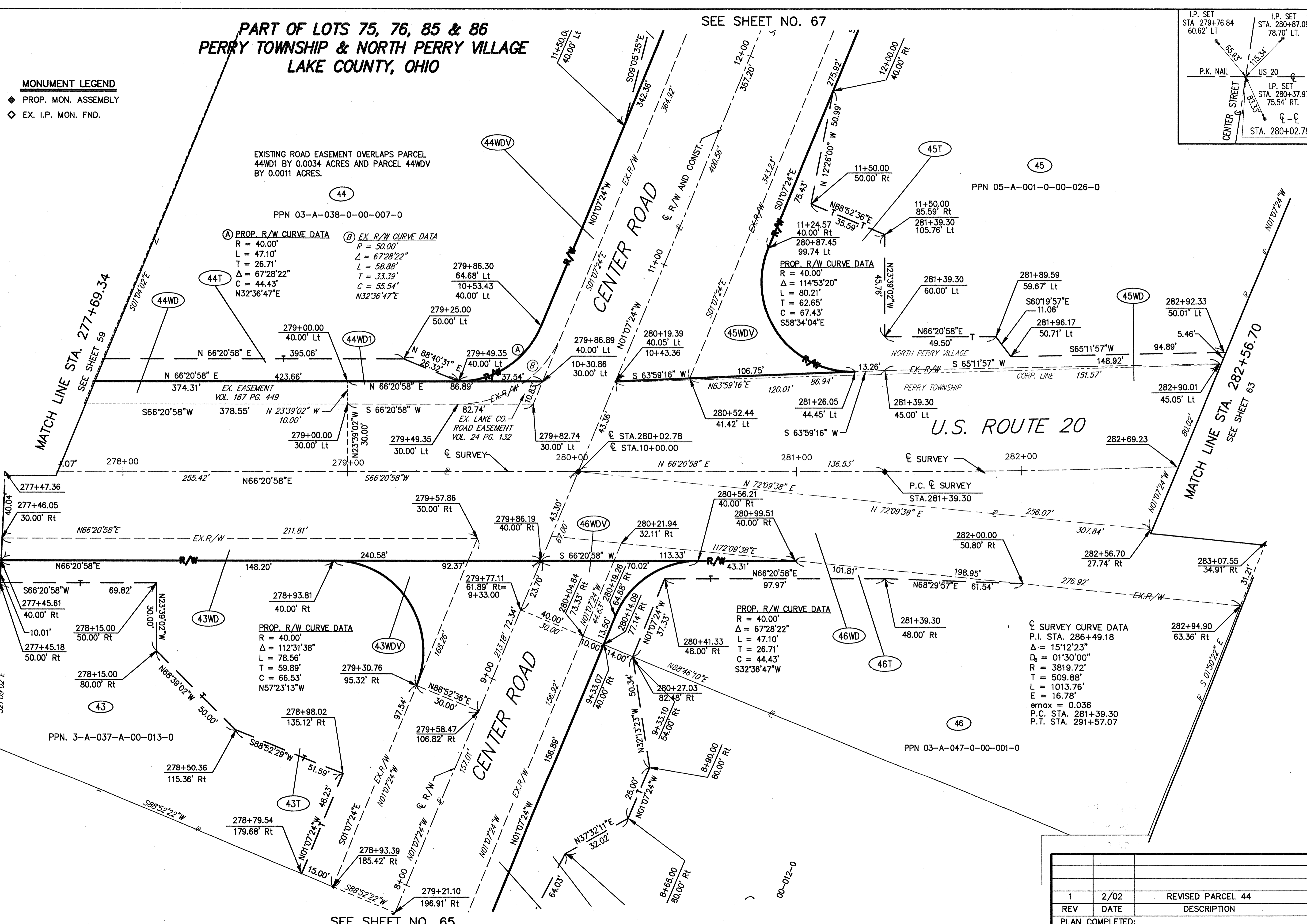
**(A) PROP. R/W CURVE DATA**  
R = 40.00'  
L = 47.10'  
T = 26.71'  
Δ = 67°28'22"  
C = 44.43'  
N32°36'47"E

**(B) EX. R/W CURVE DATA**  
R = 50.00'  
L = 58.88'  
T = 33.39'  
Δ = 67°28'22"  
C = 55.54'  
N32°36'47"E

**PROP. R/W CURVE DATA**  
R = 40.00'  
L = 80.21'  
T = 62.65'  
Δ = 114°53'20"  
C = 67.43'  
S58°34'04"E

**PROP. R/W CURVE DATA**  
R = 40.00'  
L = 47.10'  
T = 26.71'  
Δ = 67°28'22"  
C = 44.43'  
S32°36'47"W

**☉ SURVEY CURVE DATA**  
P.I. STA. 286+49.18  
Δ = 15°12'23"  
D<sub>s</sub> = 01°30'00"  
R = 3819.72'  
T = 509.88'  
L = 1013.76'  
E = 16.78'  
emax = 0.036  
P.C. STA. 281+39.30  
P.T. STA. 291+57.07



MATCH LINE STA. 277+69.34  
SEE SHEET 59

MATCH LINE STA. 282+56.70  
SEE SHEET 63

SEE SHEET NO. 65

FEDERAL PROJECT NO.	
PID NO.	20343
RIGHT OF WAY PLAN U.S. 20	STA. 277+69.34 TO STA. 282+56.70
LAK - 20 - 18.72	
61/87	
1	2/02
REV	DATE
	DESCRIPTION
	REVISED PARCEL 44
	415
	441

RECEIVED  
MAR 05 2002  
PRODUCTION DEPT.

H:\1998\980404.DWG\_CRWSH3.DWG

00-012-0