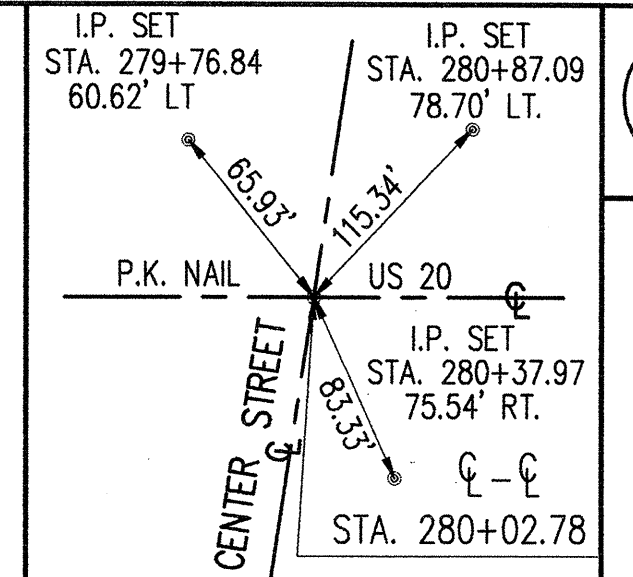


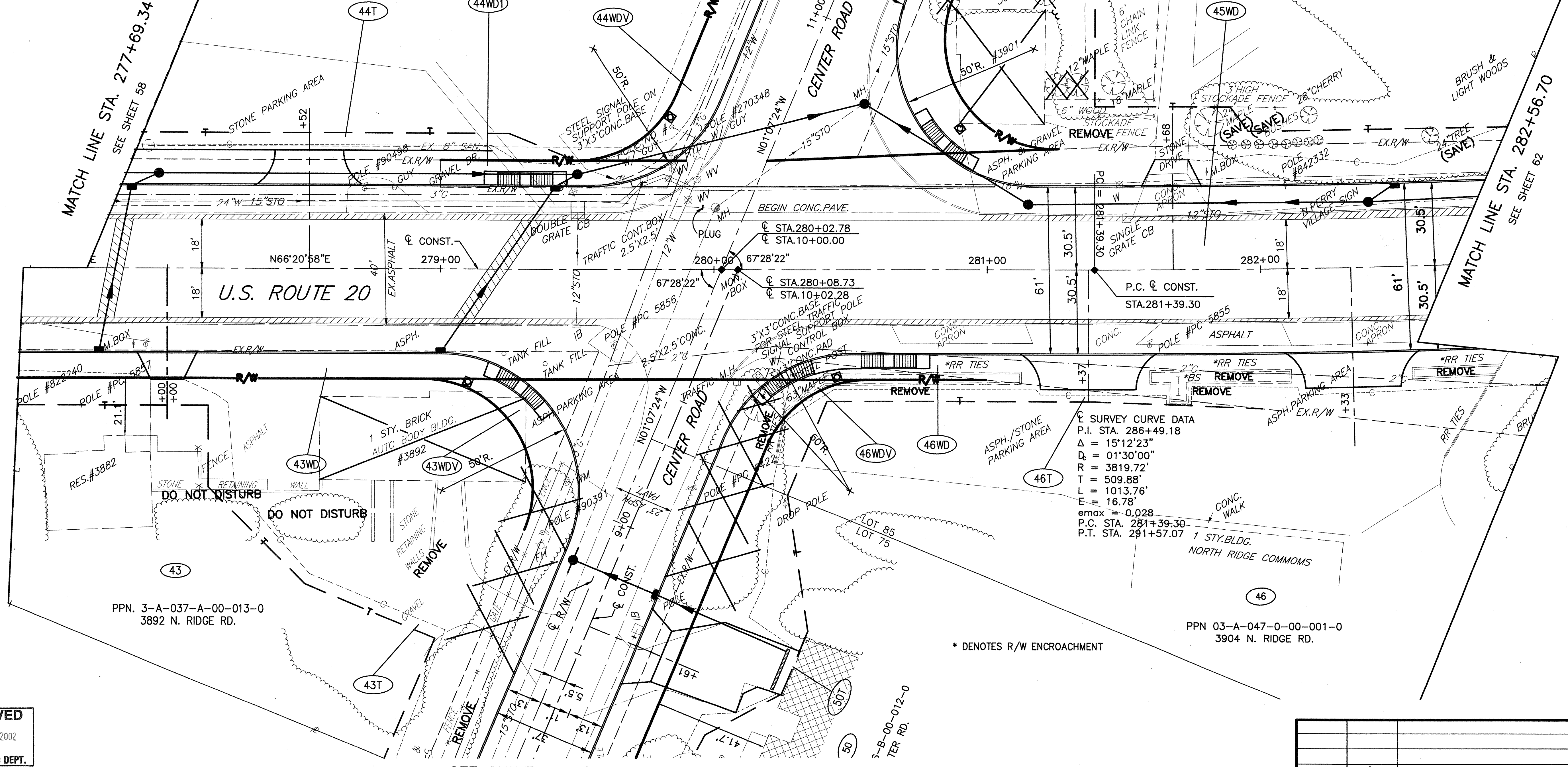
**PART OF LOTS 75, 76, 85 & 86
PERRY TOWNSHIP & NORTH PERRY VILLAGE
LAKE COUNTY, OHIO**

SEE SHEET NO. 66



- MONUMENT LEGEND**
- ◆ PROP. MON. ASSEMBLY
 - ◇ EX. I.P. MON. FND.

- STRUCTURE KEY**
- RESIDENTIAL
 - COMMERCIAL



RECEIVED
MAR 08 2002
PRODUCTION DEPT.

SEE SHEET NO. 64

3-B-00-012-0
TER RD.

* DENOTES R/W ENCROACHMENT

SURVEY CURVE DATA
P.I. STA. 286+49.18
 $\Delta = 15^{\circ}12'23''$
 $D_s = 01^{\circ}30'00''$
 $R = 3819.72'$
 $T = 509.88'$
 $L = 1013.76'$
 $E = 16.78'$
 $e_{max} = 0.028$
P.C. STA. 281+39.30
P.T. STA. 291+57.07

| | | |
|-----------------|------|-------------------|
| 1 | 2/02 | REVISED PARCEL 44 |
| REV | DATE | DESCRIPTION |
| PLAN COMPLETED: | | |

FEDERAL PROJECT NO. 20343

RIGHT OF WAY PLAN U.S. 20
STA. 277+69.34 TO STA. 282+56.70

LAK - 20 - 18.72

60/87

414
441