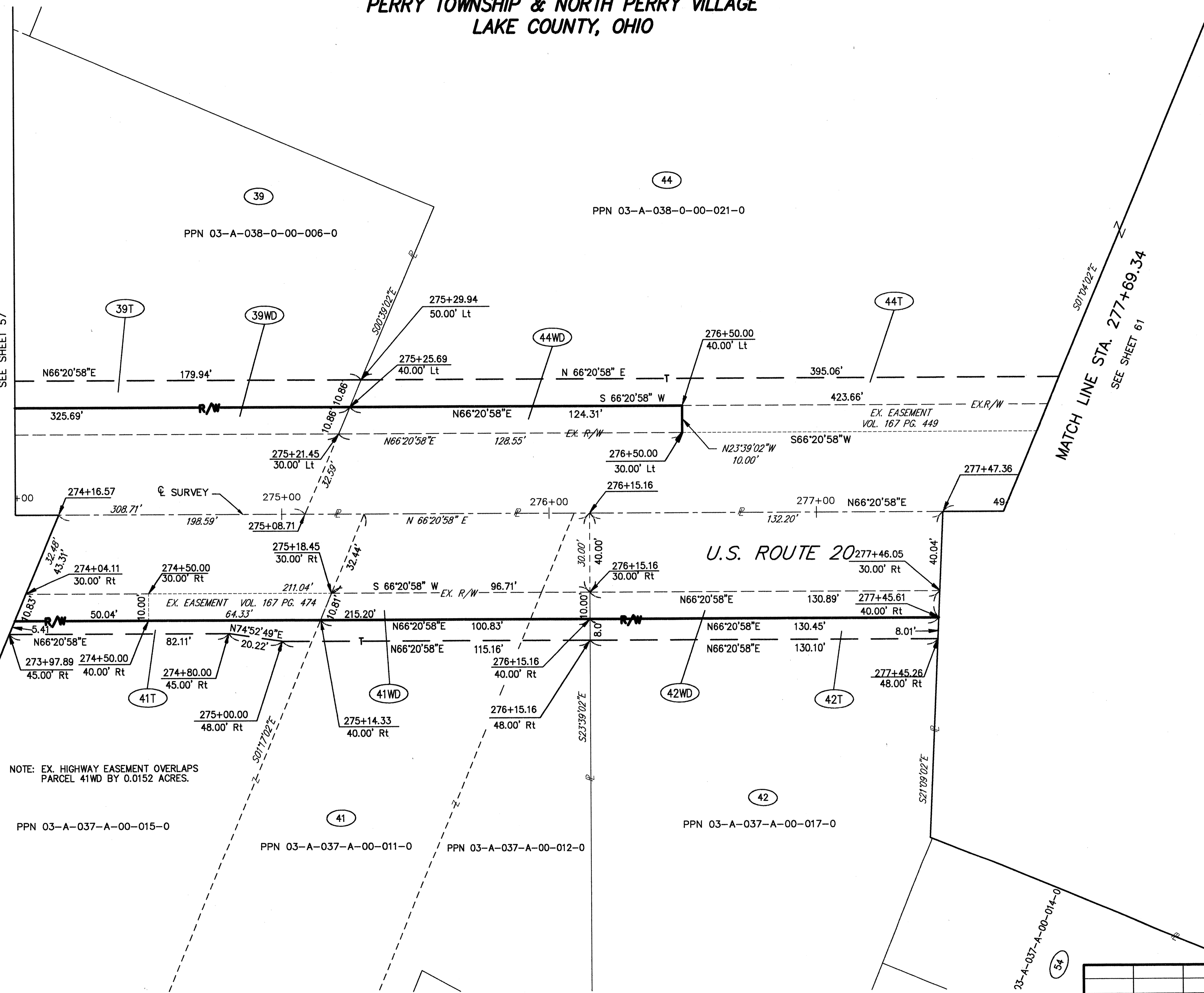


**PART OF LOTS 75, 76, 85 & 86
PERRY TOWNSHIP & NORTH PERRY VILLAGE
LAKE COUNTY, OHIO**

MATCH LINE STA. 274+00.00
SEE SHEET 57

MATCH LINE STA. 277+69.34
SEE SHEET 61



NOTE: EX. HIGHWAY EASEMENT OVERLAPS
PARCEL 41WD BY 0.0152 ACRES.

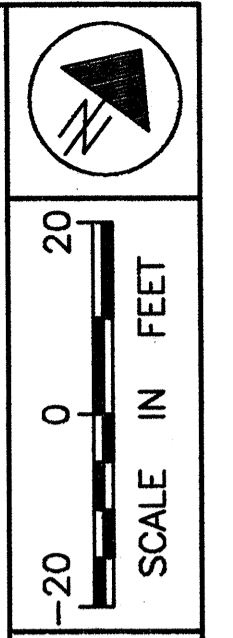
PPN 03-A-037-A-00-015-0

PPN 03-A-037-A-00-011-0

PPN 03-A-037-A-00-012-0

PPN 03-A-037-A-00-017-0

PPN 03-A-037-A-00-014-0



FEDERAL
PROJECT NO.

PID NO.
20343

RIGHT OF WAY PLAN U.S. 20
STA. 274+00.00 TO STA. 277+69.34

LAK - 20 - 18.72

59/87

RECEIVED
MAR 28 2002
PRODUCTION DEPT.

1	2/02	REVISED PARCEL 44
REV	DATE	DESCRIPTION
PLAN COMPLETED:		

413
441