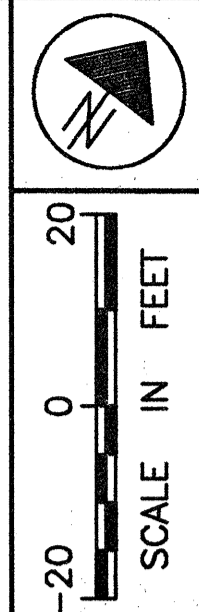
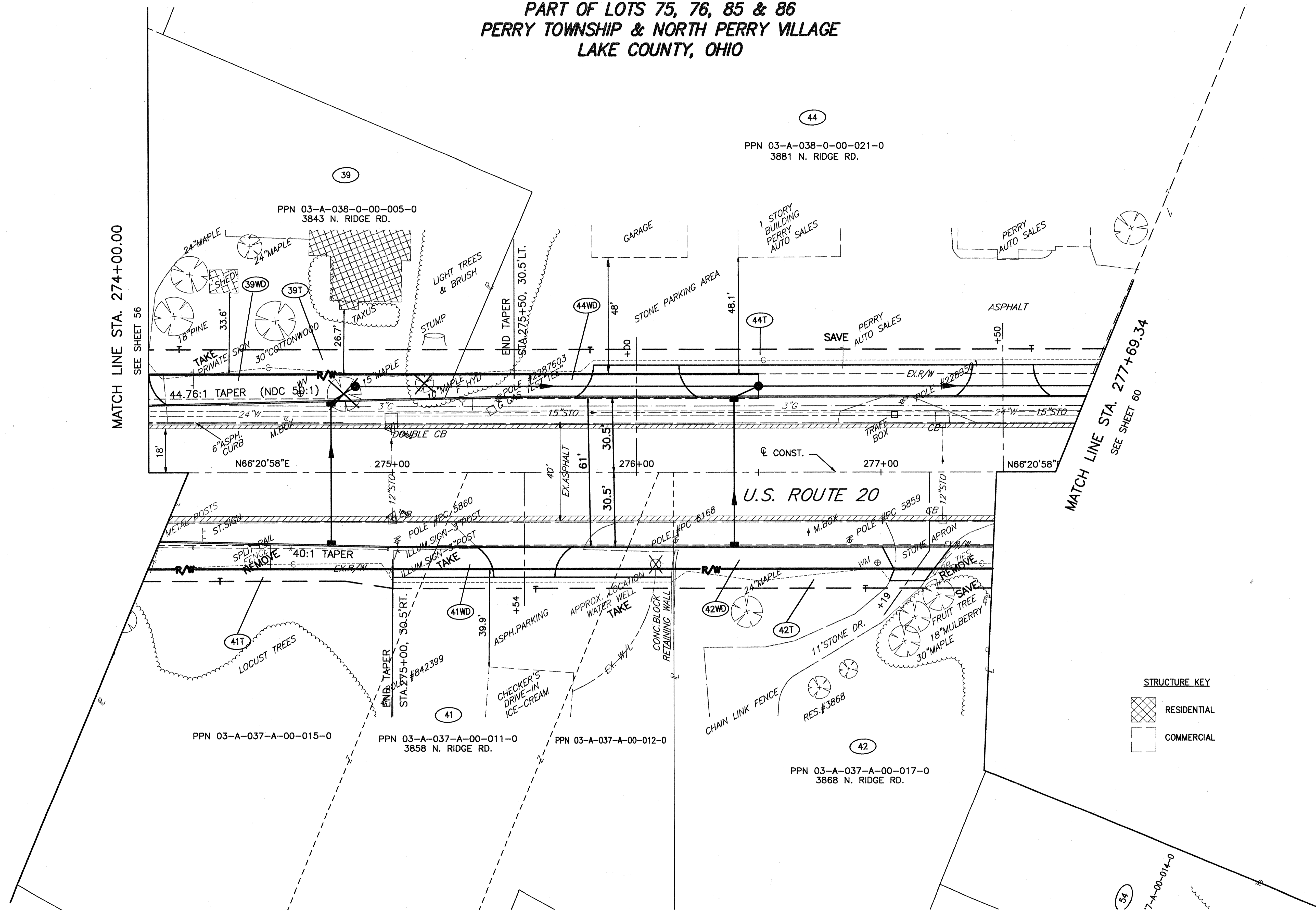


**PART OF LOTS 75, 76, 85 & 86
PERRY TOWNSHIP & NORTH PERRY VILLAGE
LAKE COUNTY, OHIO**



MATCH LINE STA. 274+00.00
SEE SHEET 56

MATCH LINE STA. 277+69.34
SEE SHEET 80



STRUCTURE KEY
 RESIDENTIAL
 COMMERCIAL

FEDERAL PROJECT NO.

20343

RIGHT OF WAY PLAN U.S. 20
STA. 274+00.00 TO STA. 277+69.34

LAK - 20 - 18.72

58/87

REV	DATE	DESCRIPTION
2	11/07/01	ADDED WATER WELL PARCEL 41
1	11/05/01	REVISED PARCEL 41
PLAN COMPLETED:		

412
441

RECEIVED
MAR 26 2002
PRODUCTION DEPT.

H:\1998\404\DWG\RWPLAN2.DWG