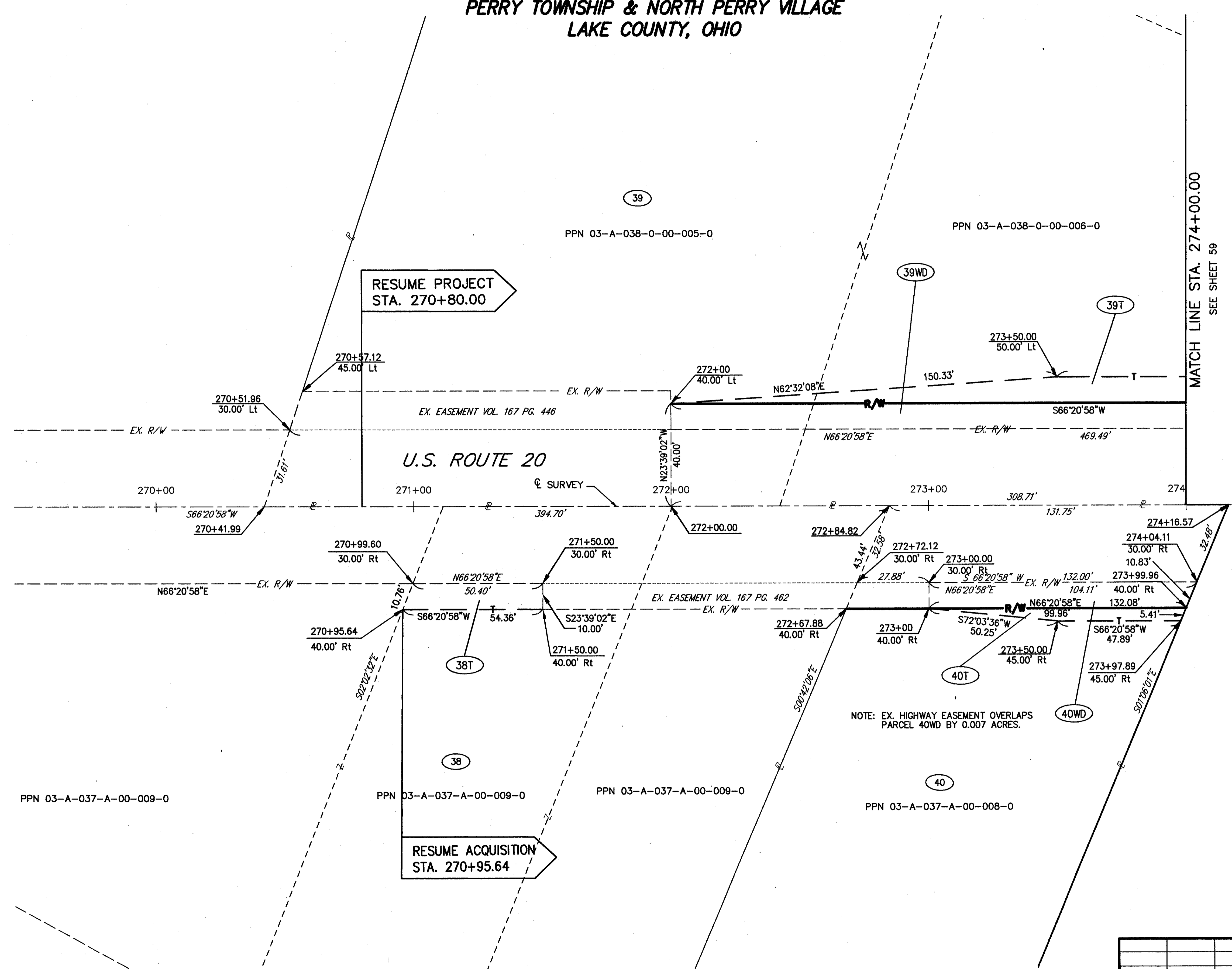
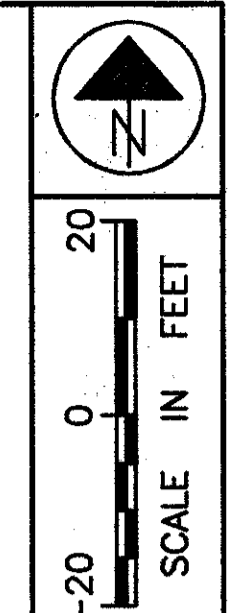


PART OF LOTS 75, 76, 85 & 86  
PERRY TOWNSHIP & NORTH PERRY VILLAGE  
LAKE COUNTY, OHIO



MATCH LINE STA. 274+00.00  
SEE SHEET 59

FEDERAL PROJECT NO.  
20343

RIGHT OF WAY PLAN U.S. 20  
STA. 271+00.00 TO STA. 274+00.00

LAK - 20 - 18.72

REV	DATE	DESCRIPTION

57/87

411  
441

H:\1998\98404\DWG\CRWSH1.DWG