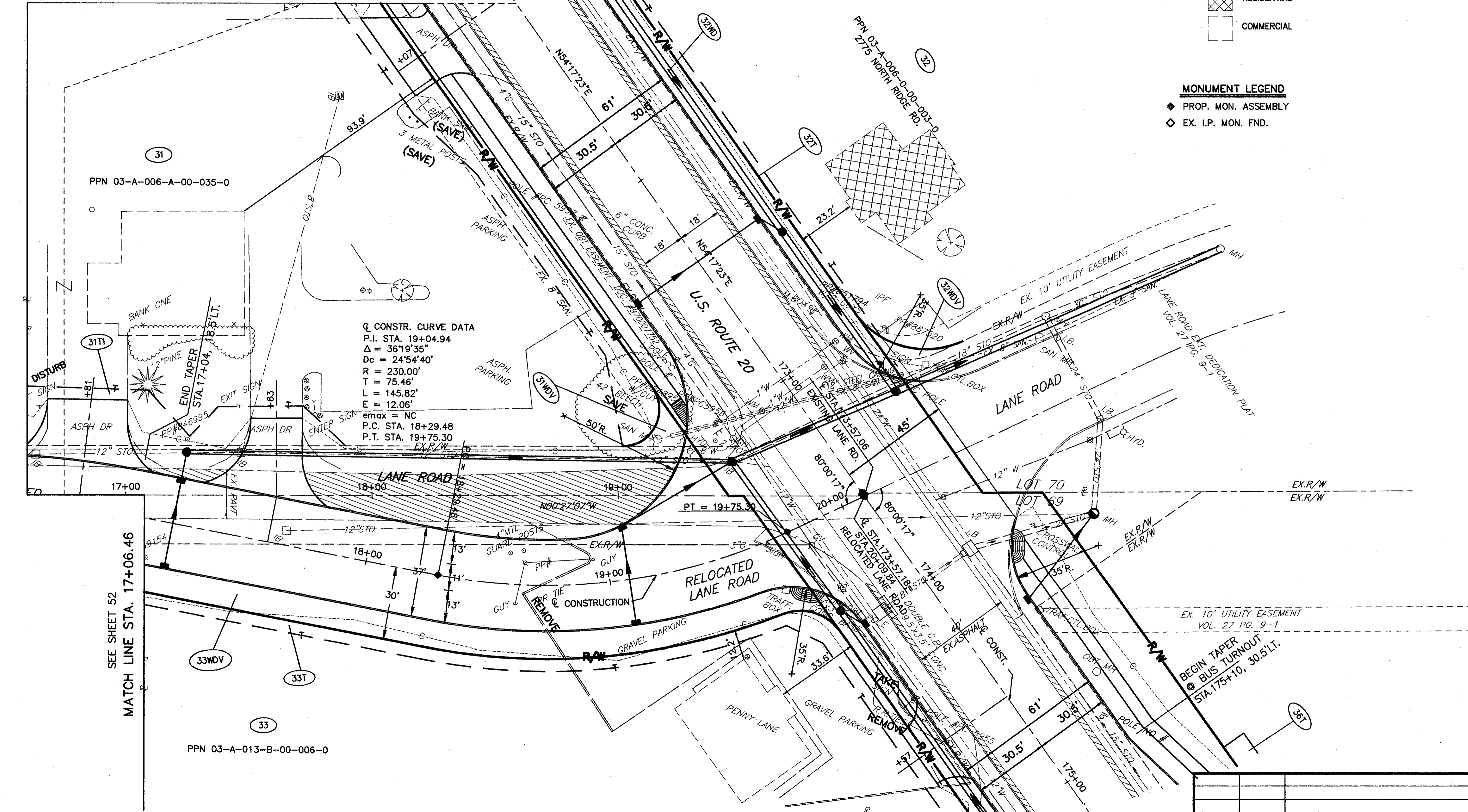
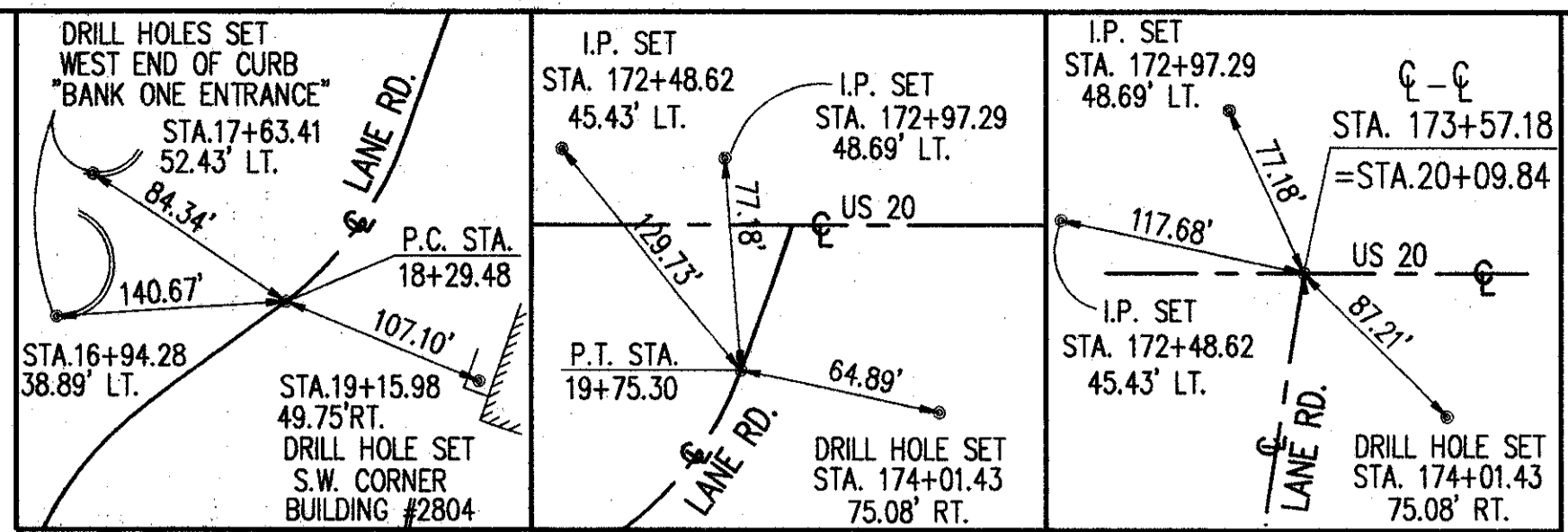
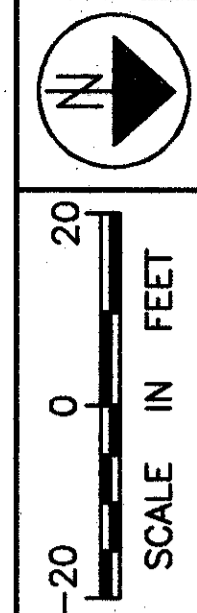
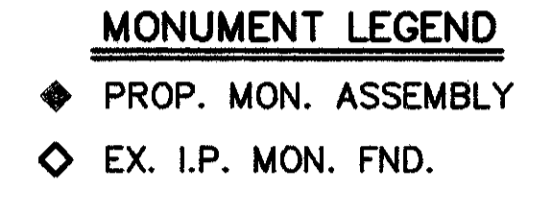
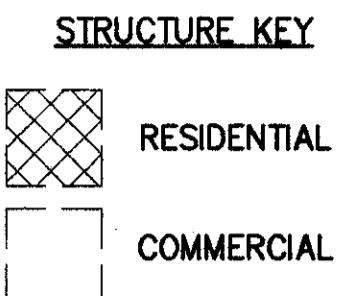


**PART OF LOTS 69 & 70  
PERRY TOWNSHIP  
LAKE COUNTY, OHIO**



**Q CONSTR. CURVE DATA**  
 P.I. STA. 19+04.94  
 $\Delta = 36^{\circ}19'35''$   
 $D_c = 24^{\circ}54'40''$   
 $R = 230.00'$   
 $T = 75.46'$   
 $L = 145.82'$   
 $E = 12.06'$   
 $e_{max} = NC$   
 P.C. STA. 18+29.48  
 P.T. STA. 19+75.30



SEE SHEET 52  
MATCH LINE STA. 17+06.46

PPN 03-A-013-B-00-006-0

FEDERAL PROJECT NO.  
20343

RIGHT OF WAY PLAN LANE ROAD  
STA. 17+06.46 TO STA. 20+09.84

LAK - 20 - 18.72

REV	DATE	DESCRIPTION
PLAN COMPLETED:		

54/87  
408  
441

H:\1998\98404\DWG\LRWPLANS.DWG