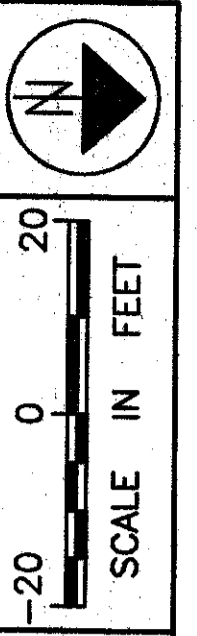
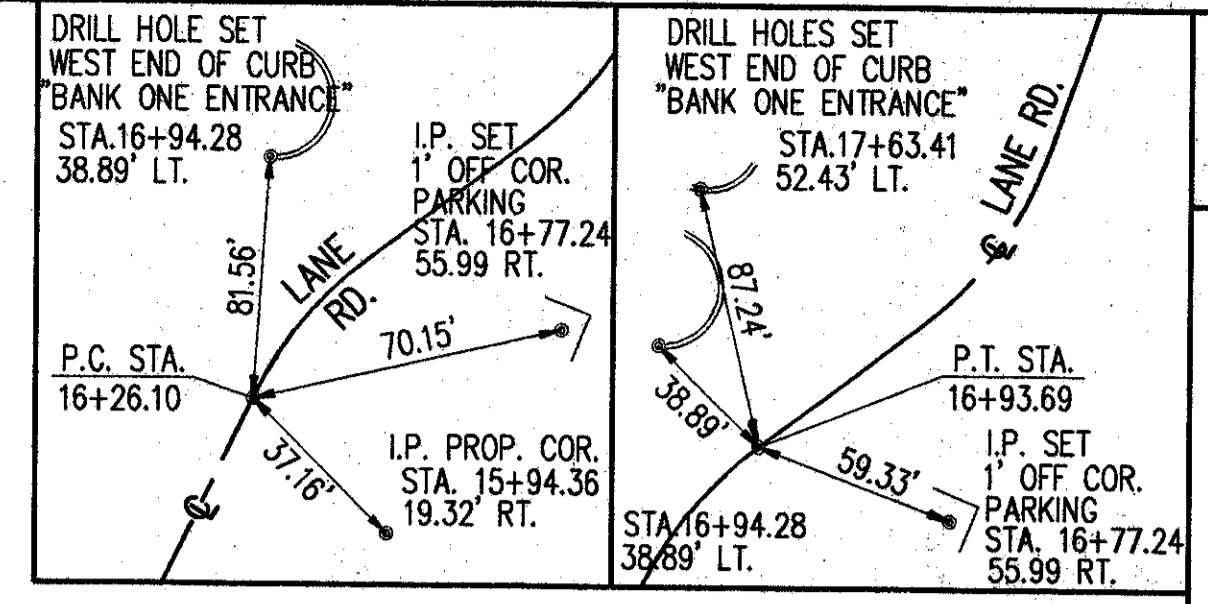
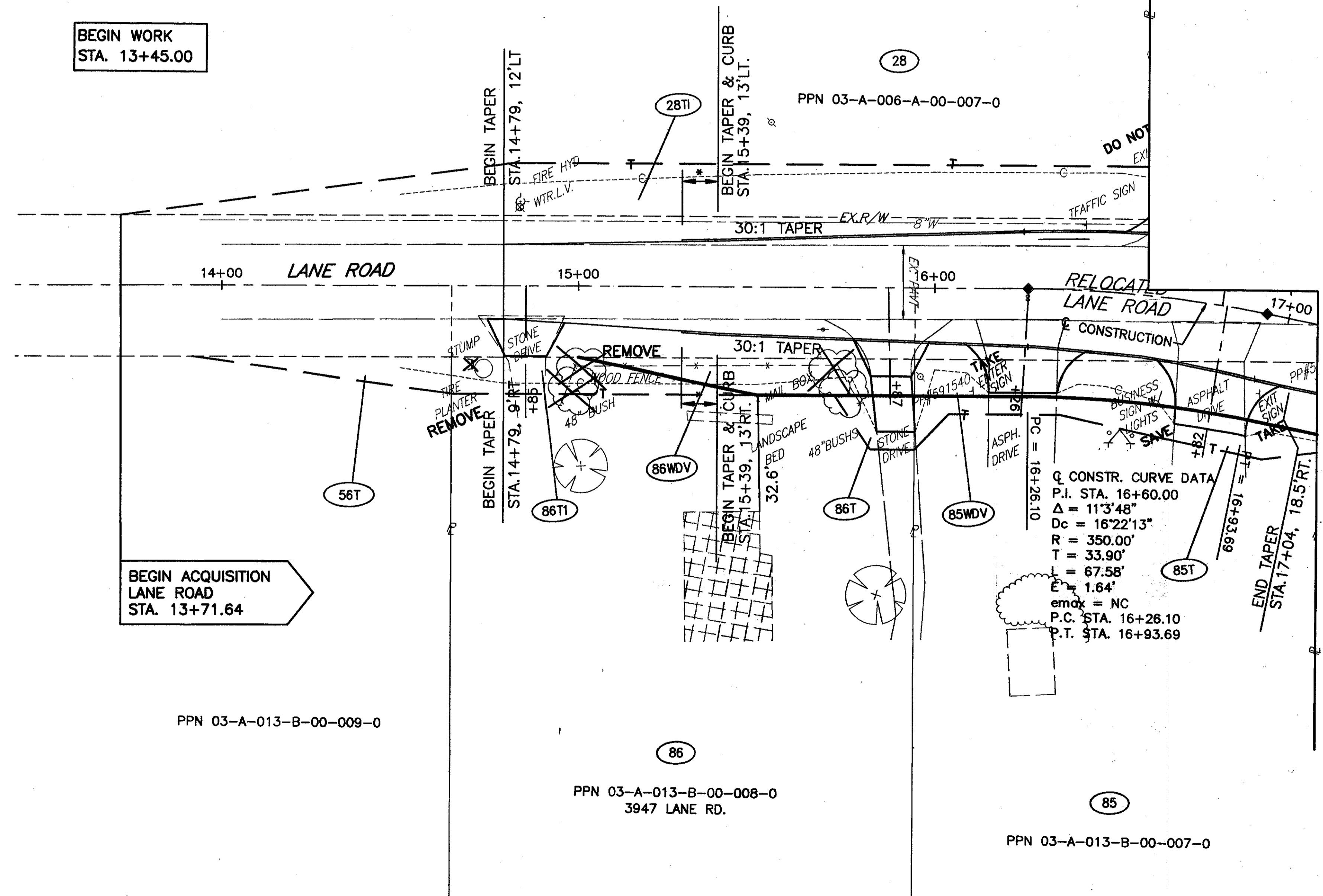


**PART OF LOTS 69 & 70
PERRY TOWNSHIP
LAKE COUNTY, OHIO**



- STRUCTURE KEY**
- RESIDENTIAL
 - COMMERCIAL
- MONUMENT LEGEND**
- PROP. MON. ASSEMBLY
 - EX. I.P. MON. FND.

BEGIN WORK
STA. 13+45.00



Q. CONSTR. CURVE DATA
P.I. STA. 16+60.00
 $\Delta = 113^\circ 48'$
 $D_c = 16^\circ 22' 13''$
 $R = 350.00'$
 $T = 33.90'$
 $L = 67.58'$
 $E = 1.64'$
 $e_{max} = NC$
P.C. STA. 16+26.10
P.T. STA. 16+93.69

MATCH LINE STA. 17+06.46
SEE SHEET 54

FEDERAL PROJECT NO.
20343

RIGHT OF WAY PLAN LANE ROAD
STA. 13+71.64 TO STA. 17+06.46

LAK - 20 - 18.72

			52/87
1	9/24/01	ADDED ENTER & EXIT SIGNS TO PARCEL 85	406
REV	DATE	DESCRIPTION	441
PLAN COMPLETED:			

H:\1998\98404.DWG\LRWPLAN6.DWG