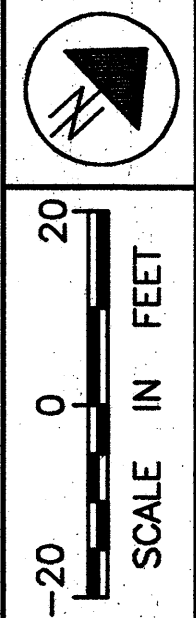


**PART OF LOTS 69 & 70  
PERRY TOWNSHIP  
LAKE COUNTY, OHIO**

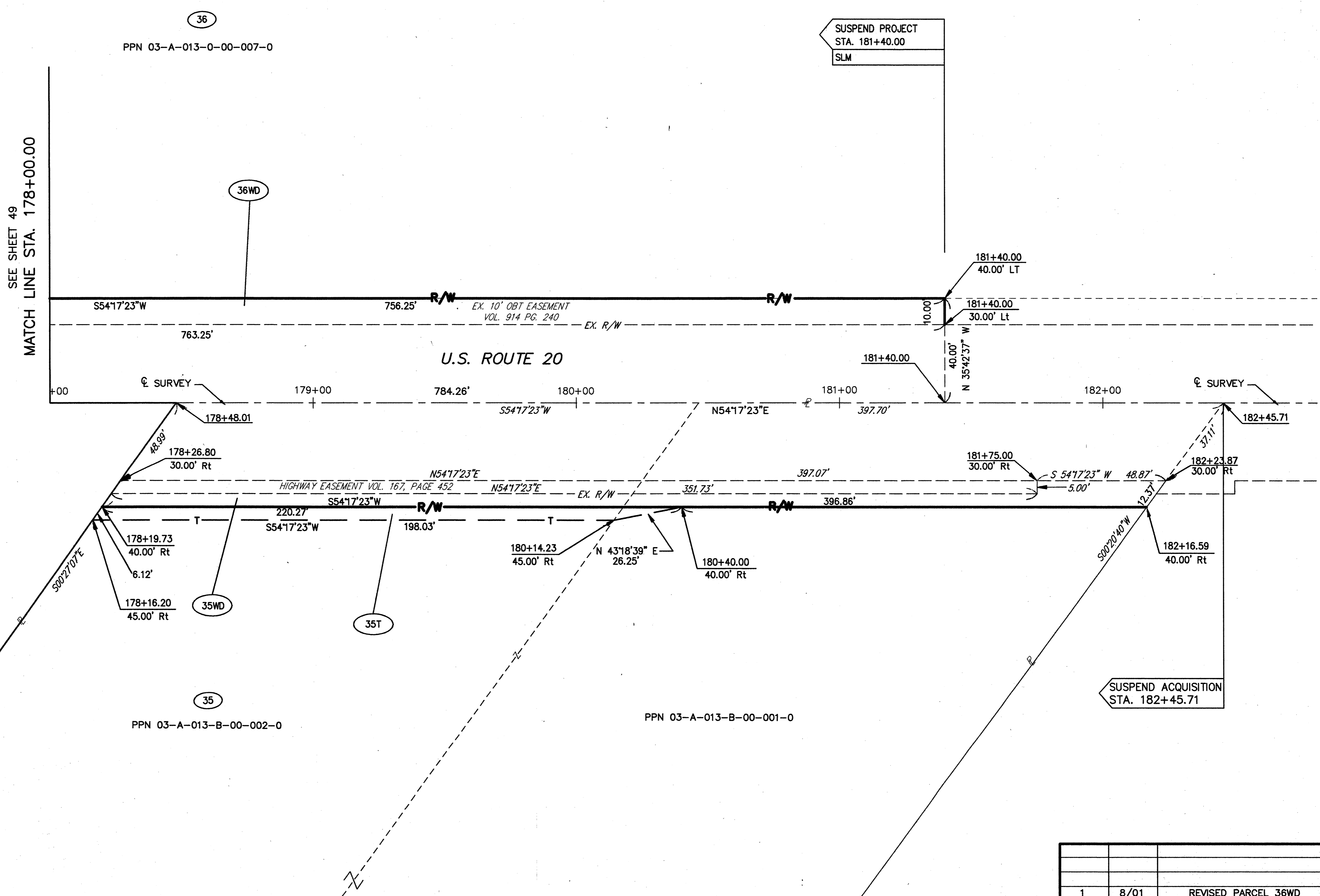


FEDERAL PROJECT NO.  
20343

RIGHT OF WAY PLAN U.S. 20  
STA. 178+00.00 TO STA. 181+40.00

LAK - 20 - 18.72

51/87  
405  
441



SEE SHEET 49  
MATCH LINE STA. 178+00.00

SUSPEND PROJECT  
STA. 181+40.00  
SLM

SUSPEND ACQUISITION  
STA. 182+45.71

1	8/01	REVISED PARCEL 36WD
REV	DATE	DESCRIPTION
PLAN COMPLETED:		

H:\1998\98404.DWG\LRWSH4.DWG