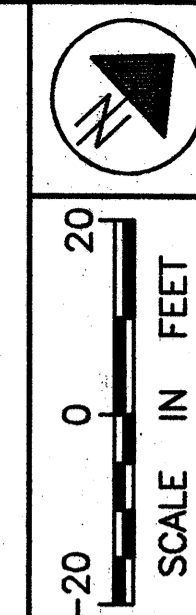


**PART OF LOTS 69 & 70
PERRY TOWNSHIP
LAKE COUNTY, OHIO**



36
PPN 03-A-013-0-00-007-0

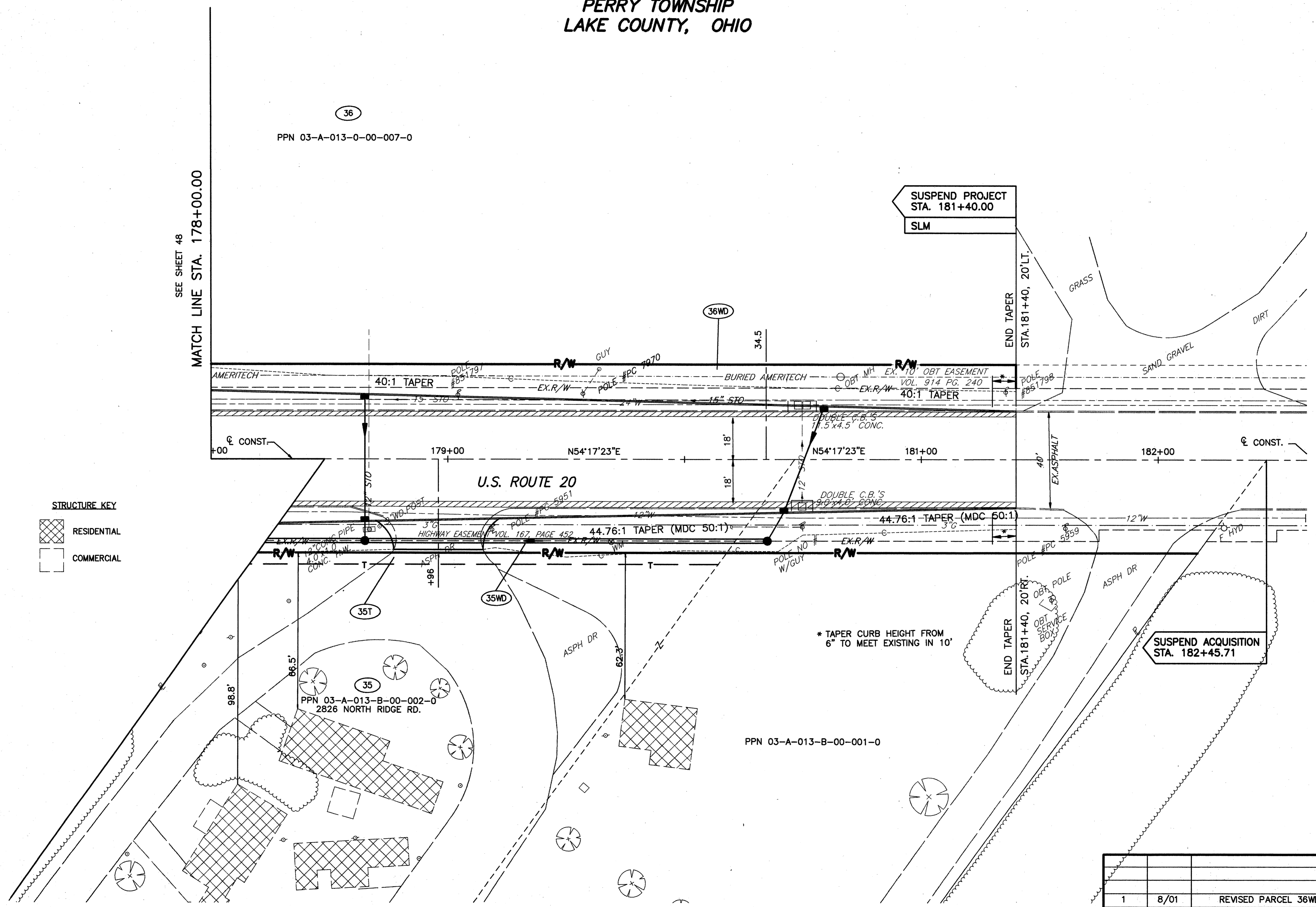
SEE SHEET 48
MATCH LINE STA. 178+00.00

SUSPEND PROJECT
STA. 181+40.00
SLM

FEDERAL
PROJECT NO.
20343

RIGHT OF WAY PLAN U.S. 20
STA. 178+00.00 TO STA. 181+40.00

STRUCTURE KEY
 RESIDENTIAL
 COMMERCIAL



* TAPER CURB HEIGHT FROM
6" TO MEET EXISTING IN 10'

SUSPEND ACQUISITION
STA. 182+45.71

H:\1998\98404\DWG\LRWPLAN4.DWG

| | | |
|-----------------|------|---------------------|
| 1 | 8/01 | REVISED PARCEL 36WD |
| REV | DATE | DESCRIPTION |
| PLAN COMPLETED: | | |

LAK - 20 - 18.72

50/87

404
441