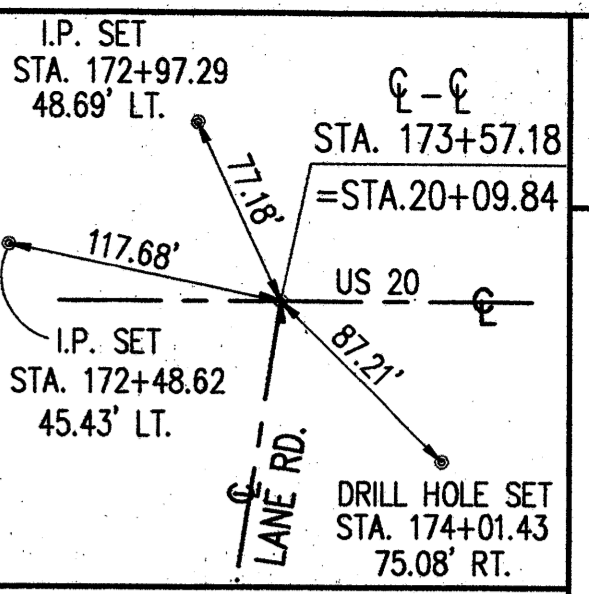


**PART OF LOTS 69 & 70
PERRY TOWNSHIP
LAKE COUNTY, OHIO**



MONUMENT LEGEND
 ◆ PROP. MON. ASSEMBLY
 ◇ EX. I.P. MON. FND.

PROP. R/W CURVE DATA (D)
 Δ = 35°35'22"
 R = 35.00'
 T = 11.23'
 L = 21.74'
 C = 21.39'
 S07°55'13"E

PROP. R/W CURVE DATA (A)
 Δ = 80°00'17"
 R = 35.00'
 T = 29.37'
 L = 48.87'
 C = 45.00'
 N14°17'14"E

PROP. R/W CURVE DATA (C)
 Δ = 23°53'44"
 R = 35.00'
 T = 7.41'
 L = 14.60'
 C = 14.49'
 S42°20'31"W

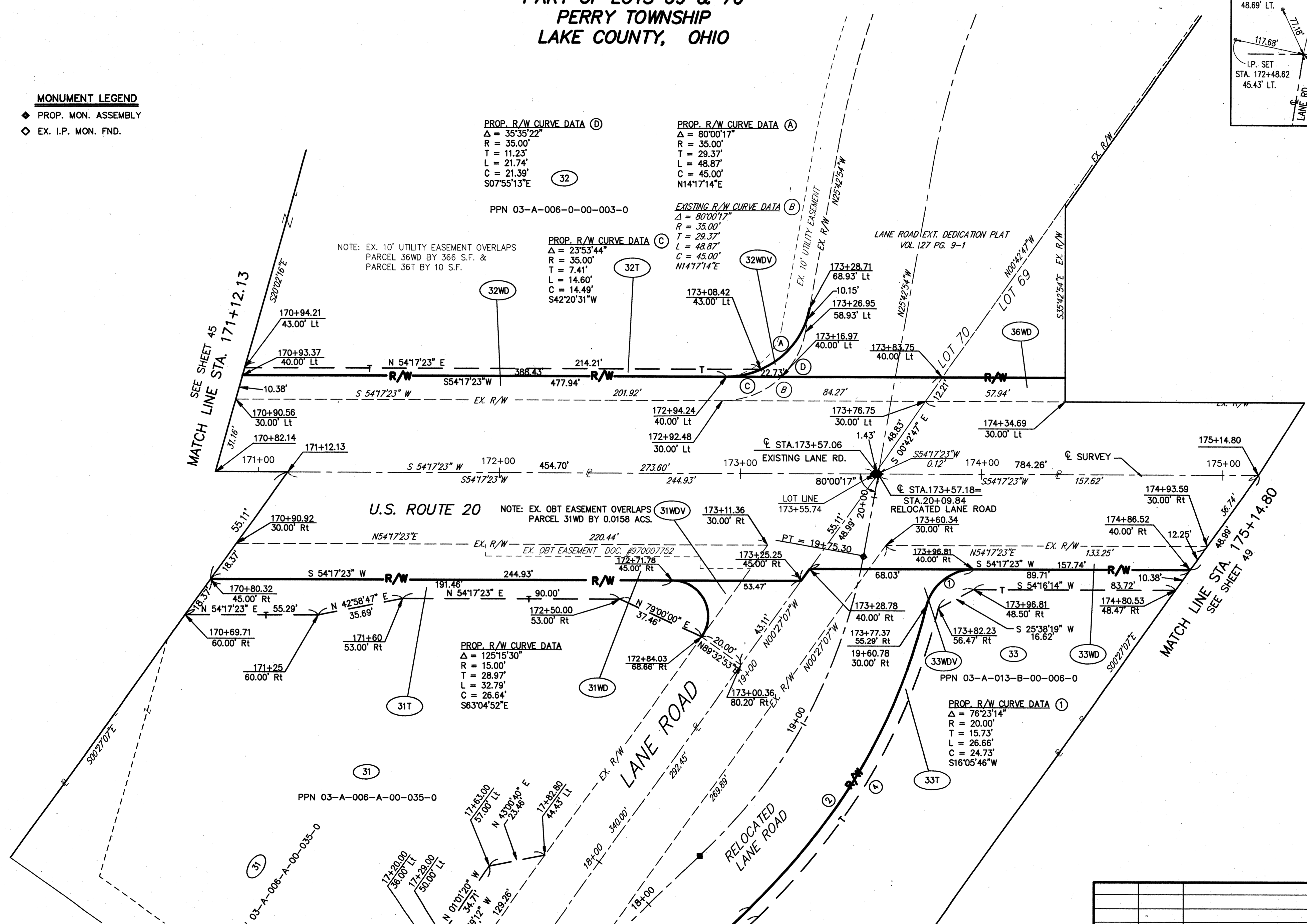
EXISTING R/W CURVE DATA (B)
 Δ = 80°00'17"
 R = 35.00'
 T = 29.37'
 L = 48.87'
 C = 45.00'
 N14°17'14"E

NOTE: EX. 10' UTILITY EASEMENT OVERLAPS PARCEL 36WD BY 366 S.F. & PARCEL 36T BY 10 S.F.

NOTE: EX. OBT EASEMENT OVERLAPS PARCEL 31WD BY 0.0158 ACS.

PROP. R/W CURVE DATA
 Δ = 125°15'30"
 R = 15.00'
 T = 28.97'
 L = 32.79'
 C = 26.64'
 S63°04'52"E

PROP. R/W CURVE DATA (1)
 Δ = 76°23'14"
 R = 20.00'
 T = 15.73'
 L = 26.66'
 C = 24.73'
 S16°05'46"W



SEE SHEET 45
MATCH LINE STA. 171+12.13

MATCH LINE STA. 175+14.80
SEE SHEET 49

SEE SHEET 55

FEDERAL PROJECT NO.	20343	
PID NO.	20343	
RIGHT OF WAY PLAN U.S. 20	STA. 171+12.13 TO STA. 175+14.80	
LAK - 20 - 18.72		
47/87		
REV	DATE	DESCRIPTION
1	8/01	REVISED PARCEL 36WD
PLAN COMPLETED:		

H:\1998\98404.DWG\LRWS12.DWG