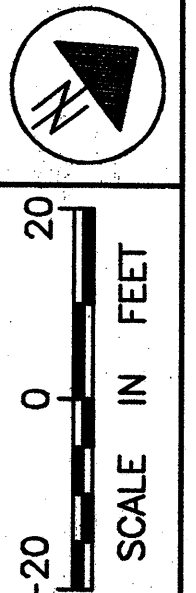
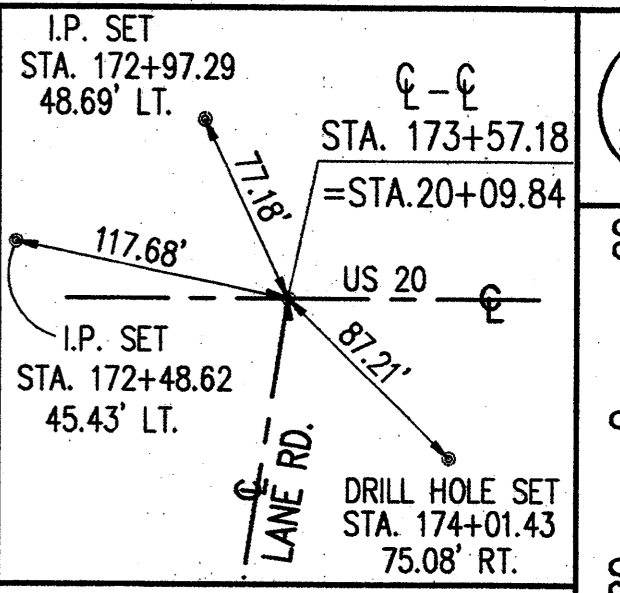


PART OF LOTS 69 & 70
PERRY TOWNSHIP
LAKE COUNTY, OHIO



MONUMENT LEGEND

- ◆ PROP. MON. ASSEMBLY
- ◇ EX. I.P. MON. FND.

FEDERAL PROJECT NO.

PID NO. 20343

RIGHT OF WAY PLAN U.S. 20
STA. 171+12.13 TO STA. 175+14.80

LAK - 20 - 18.72

46/87

400
441

PPN 03-A-006-0-00-003-0
2775 NORTH RIDGE RD.

PPN 03-A-006-A-00-035-0
2772 NORTH RIDGE RD.

PPN 03-A-013-B-00-006-0
2804 NORTH RIDGE RD.

SEE SHEET 54

MATCH LINE STA. 175+14.80
SEE SHEET 48

MATCH LINE STA. 171+12.13
SEE SHEET 44

STRUCTURE KEY

- RESIDENTIAL
- COMMERCIAL

| REV | DATE | DESCRIPTION |
|-----------------|------|---------------------|
| 1 | 8/01 | REVISED PARCEL 36WD |
| PLAN COMPLETED: | | |

H:\1998\98404\DWG\LRWPLAN2.DWG