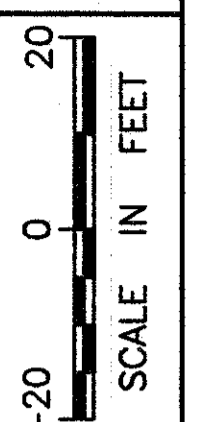


PART OF LOTS 69 & 70  
PERRY TOWNSHIP  
LAKE COUNTY, OHIO



FEDERAL PROJECT NO.

PID NO. 20343

RIGHT OF WAY PLAN U.S. 20  
STA. 166+13.00 TO STA. 171+12.13

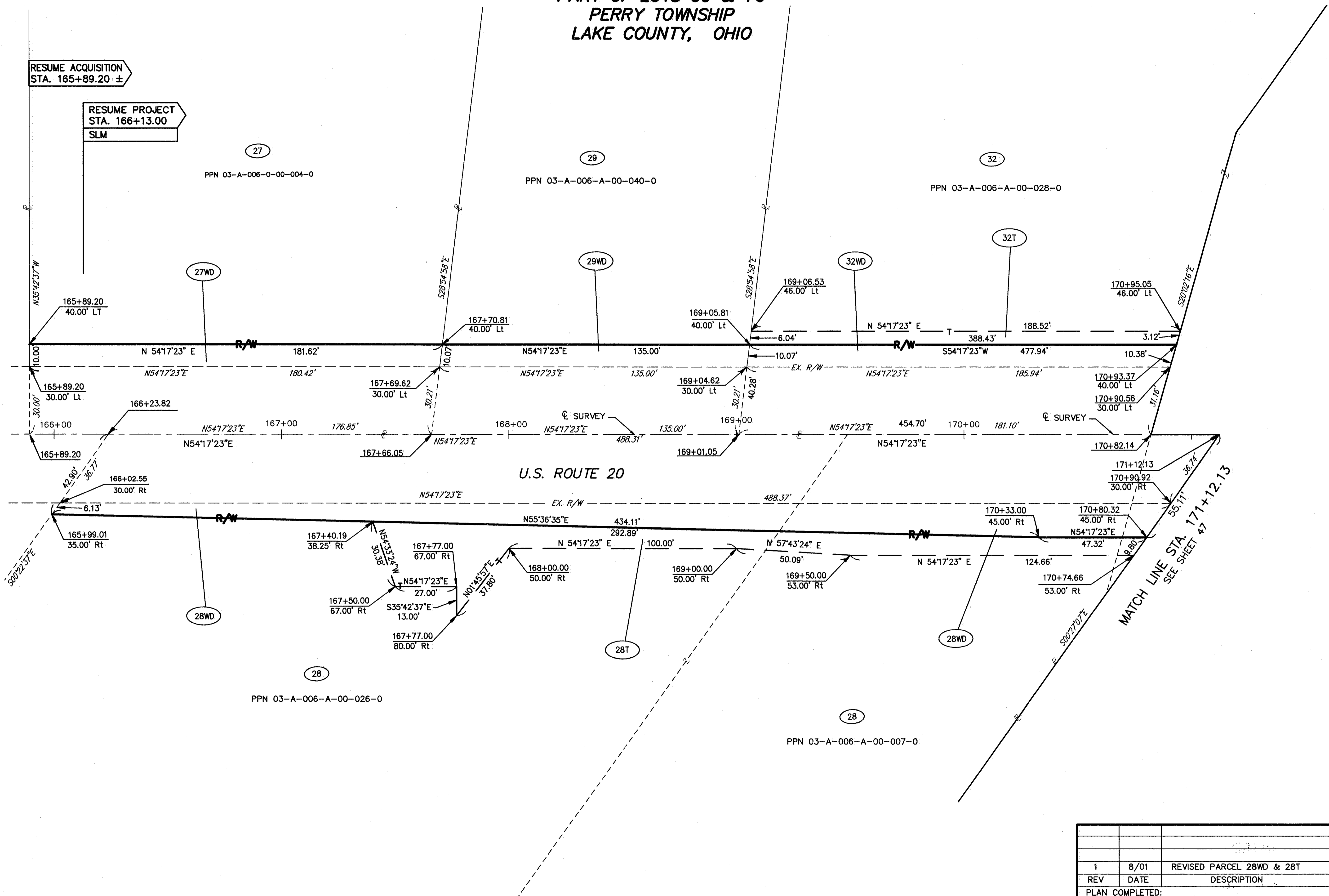
LAK - 20 - 18.72

45/87

399  
441

RESUME ACQUISITION  
STA. 165+89.20 ±

RESUME PROJECT  
STA. 166+13.00  
SLM



U.S. ROUTE 20

MATCH LINE STA. 171+12.13  
SEE SHEET 47

1	8/01	REVISED PARCEL 28WD & 28T
REV	DATE	DESCRIPTION
PLAN COMPLETED:		

H:\1998\98404.DWG\LRW5H1.DWG