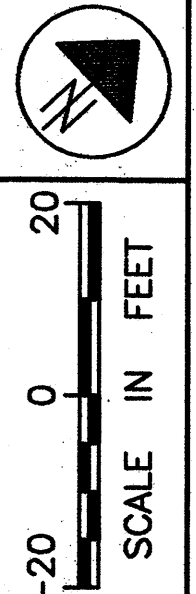


PART OF LOTS 69 & 70
PERRY TOWNSHIP
LAKE COUNTY, OHIO



FEDERAL PROJECT NO. 20343

RIGHT OF WAY PLAN U.S. 20
STA. 166+13.00 TO STA. 171+12.13

LAK - 20 - 18.72

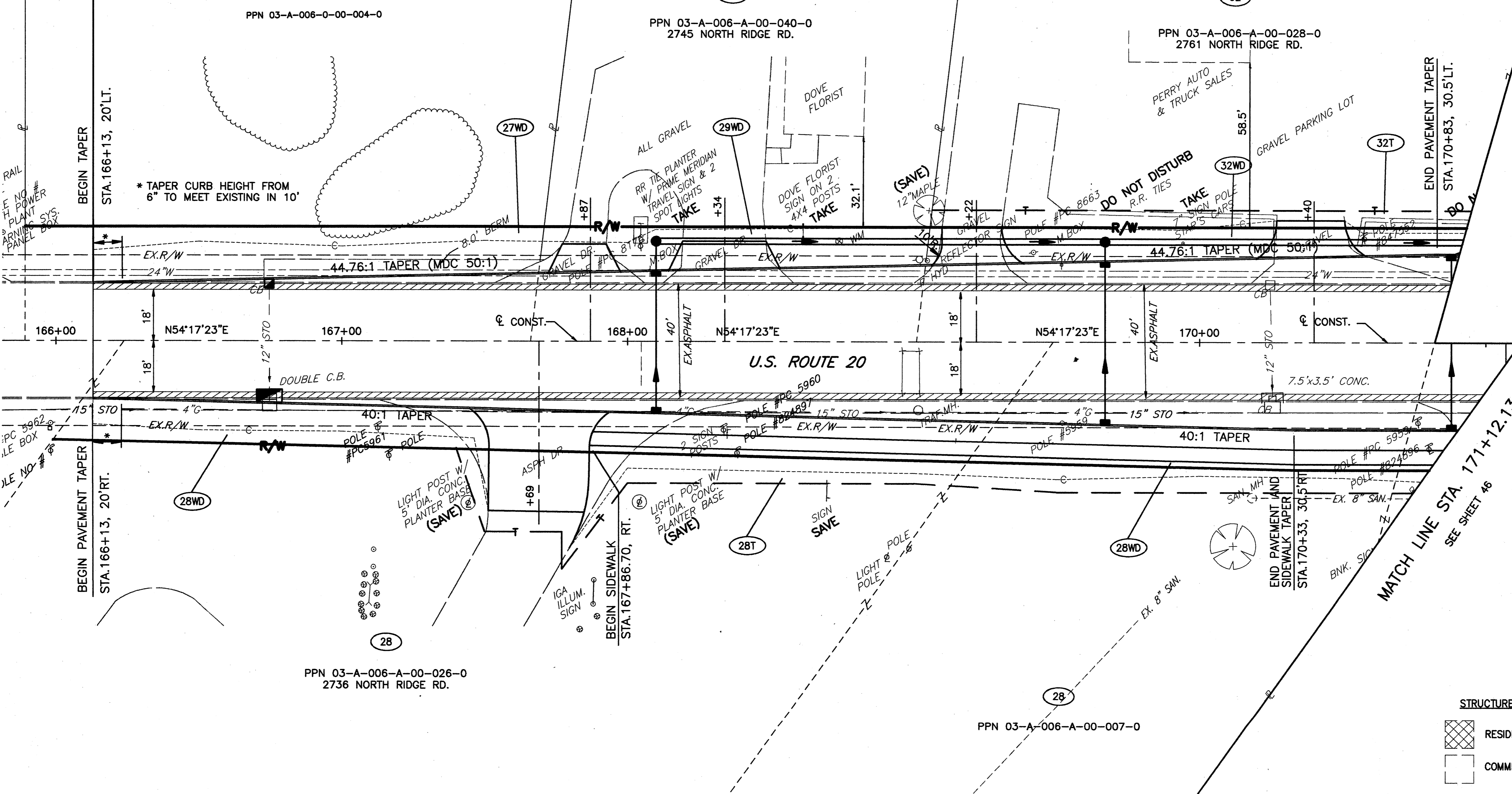
44/87

398
441

RESUME ACQUISITION
STA. 165+89.20

RESUME PROJECT
STA. 166+13.00

SLM



STRUCTURE KEY

RESIDENTIAL

COMMERCIAL

REV	DATE	DESCRIPTION
2	8/01	REVISED PARCEL 28WD & 28T
1	7/01	ADDED SIGNS TO PARCEL 29

PLAN COMPLETED:

H:\1998\98404\DWG_LR\PLANT.DWG