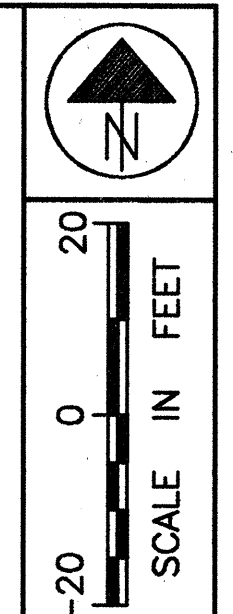


**PART OF LOT 7, TRACT 2  
PART OF LOTS 5 THRU 13, TRACT 1  
PAINESVILLE, TOWNSHIP  
LAKE COUNTY, OHIO**



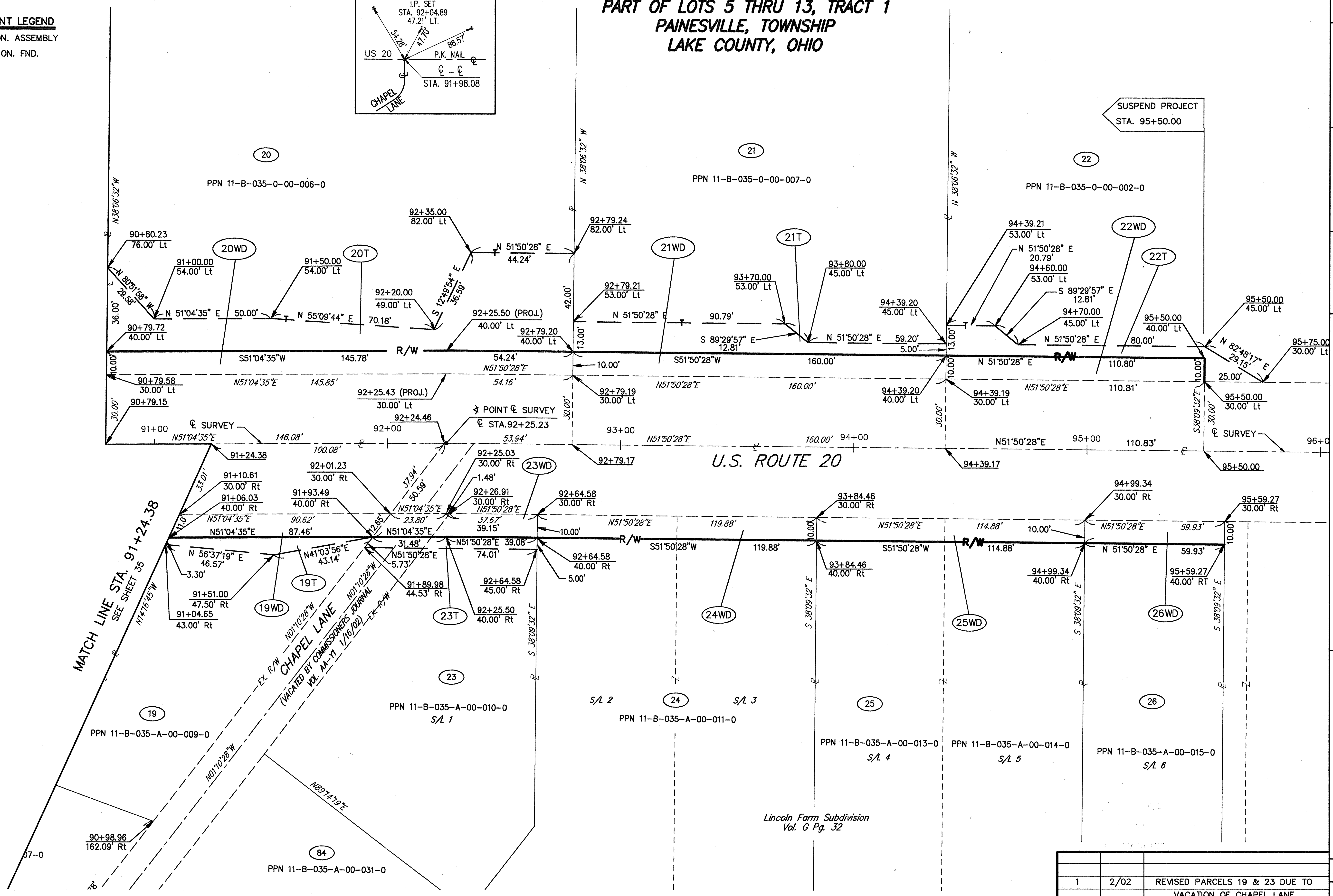
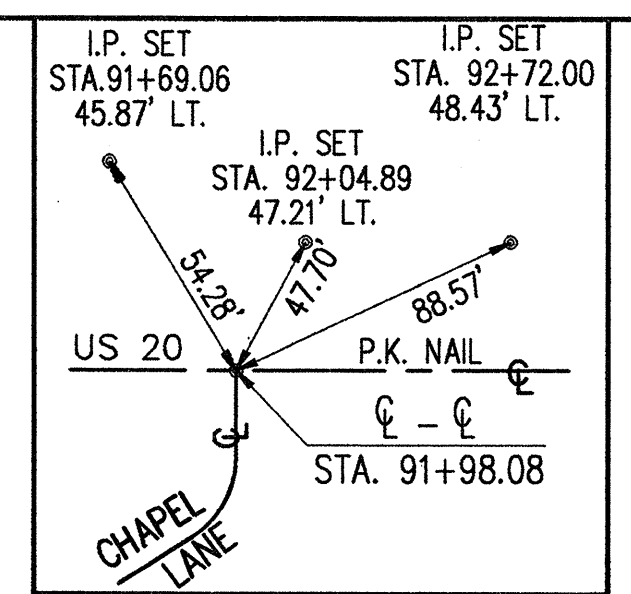
FEDERAL PROJECT NO.  
20343

RIGHT OF WAY PLAN U.S. 20  
STA. 91+24.00 TO STA. 95+75.00

LAK - 20 - 18.72

37/87  
391  
441

**MONUMENT LEGEND**  
◆ PROP. MON. ASSEMBLY  
◇ EX. I.P. MON. FND.



RECEIVED  
MAR 05 2004  
PRODUCTION DEPT.

| REV | DATE | DESCRIPTION  |
|-----|------|--|
| 1   | 2/02 | REVISED PARCELS 19 & 23 DUE TO VACATION OF CHAPEL LANE |
|     |      |  |
|     |      |  |

PLAN COMPLETED:

98404.DWG\HRWSH6.DWG