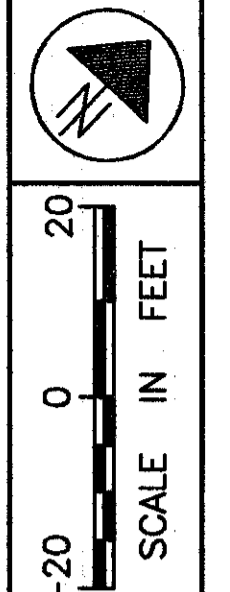


**PART OF LOT 7, TRACT 2
PART OF LOTS 5 THRU 13, TRACT 1
PAINESVILLE, TOWNSHIP
LAKE COUNTY, OHIO**

MONUMENT LEGEND
 ◆ PROP. MON. ASSEMBLY
 ◇ EX. I.P. MON. FND.

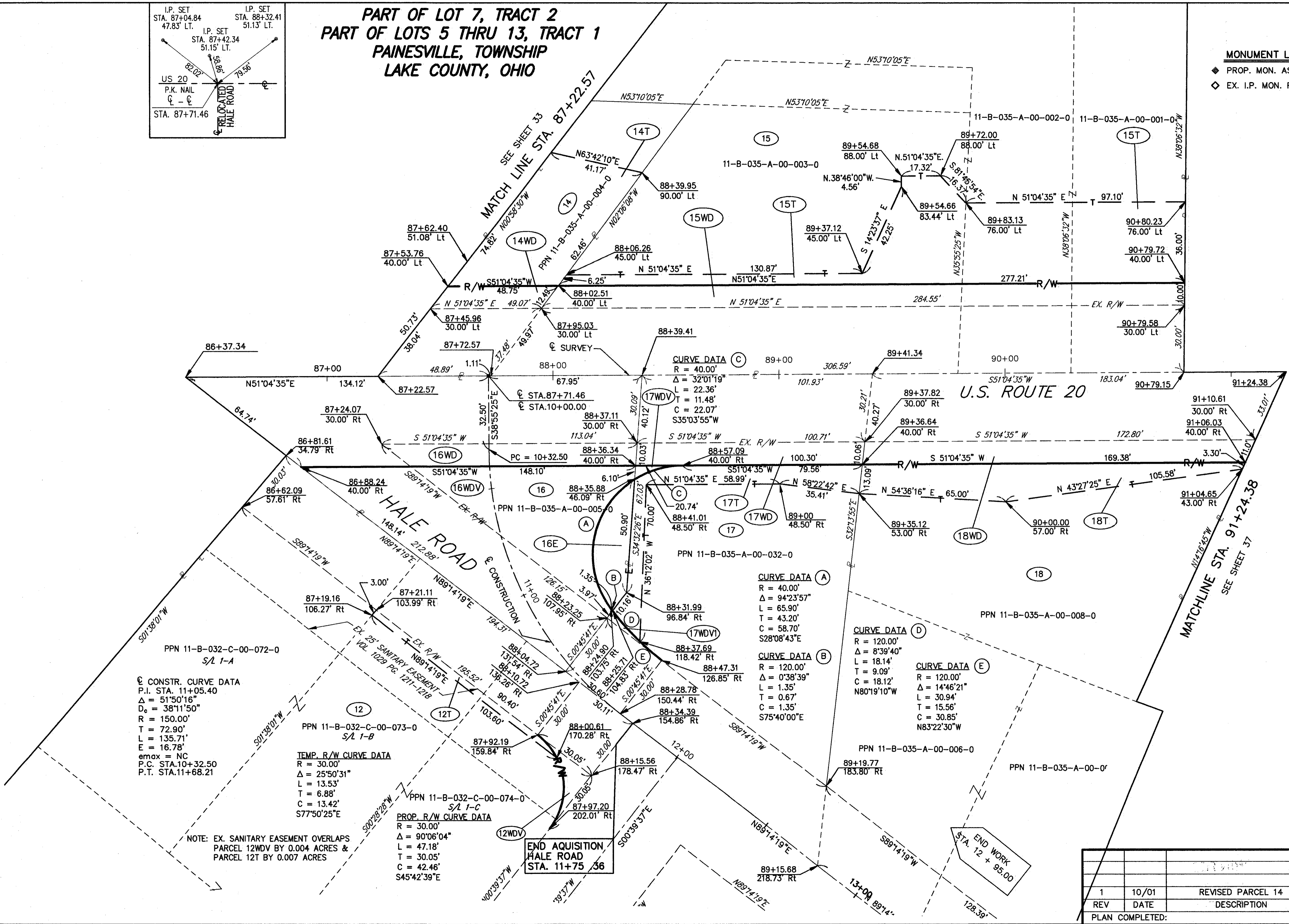


FEDERAL PROJECT NO.
20343

RIGHT OF WAY PLAN U.S. 20
STA. 87+22.57 TO STA. 91+24.00

LAK - 20 - 18.72

35/87
 10/01 REVISED PARCEL 14
 389
 441
 PLAN COMPLETED:



CONSTR. CURVE DATA
 P.I. STA. 11+05.40
 $\Delta = 51^{\circ}50'16''$
 $D_c = 38^{\circ}11'50''$
 $R = 150.00'$
 $T = 72.90'$
 $L = 135.71'$
 $E = 16.78'$
 $e_{max} = NC$
 P.C. STA. 10+32.50
 P.T. STA. 11+68.21

TEMP. R/W CURVE DATA
 $R = 30.00'$
 $\Delta = 25^{\circ}50'31''$
 $L = 13.53'$
 $T = 6.88'$
 $C = 13.42'$
 $S77^{\circ}50'25''E$

PROP. R/W CURVE DATA
 $R = 30.00'$
 $\Delta = 90^{\circ}06'04''$
 $L = 47.18'$
 $T = 30.05'$
 $C = 42.46'$
 $S45^{\circ}42'39''E$

NOTE: EX. SANITARY EASEMENT OVERLAPS
 PARCEL 12WDV BY 0.004 ACRES &
 PARCEL 12T BY 0.007 ACRES

CURVE DATA (A)
 $R = 40.00'$
 $\Delta = 94^{\circ}23'57''$
 $L = 65.90'$
 $T = 43.20'$
 $C = 58.70'$
 $S28^{\circ}08'43''E$

CURVE DATA (B)
 $R = 120.00'$
 $\Delta = 0^{\circ}38'39''$
 $L = 1.35'$
 $T = 0.67'$
 $C = 1.35'$
 $S75^{\circ}40'00''E$

CURVE DATA (D)
 $R = 120.00'$
 $\Delta = 8^{\circ}39'40''$
 $L = 18.14'$
 $T = 9.09'$
 $C = 18.12'$
 $N80^{\circ}19'10''W$

CURVE DATA (E)
 $R = 120.00'$
 $\Delta = 14^{\circ}46'21''$
 $L = 30.94'$
 $T = 15.56'$
 $C = 30.85'$
 $N83^{\circ}22'30''W$

END ACQUISITION
 HALE ROAD
 STA. 11+75.36

END WORK
 STA. 12 + 95.00

H:\1998\98404\DWG\HRWHS5.DWG