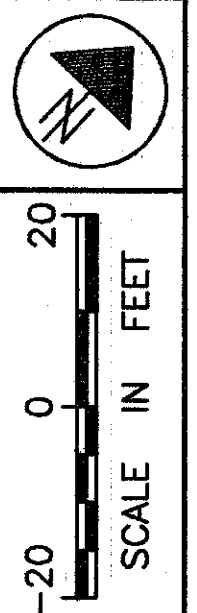
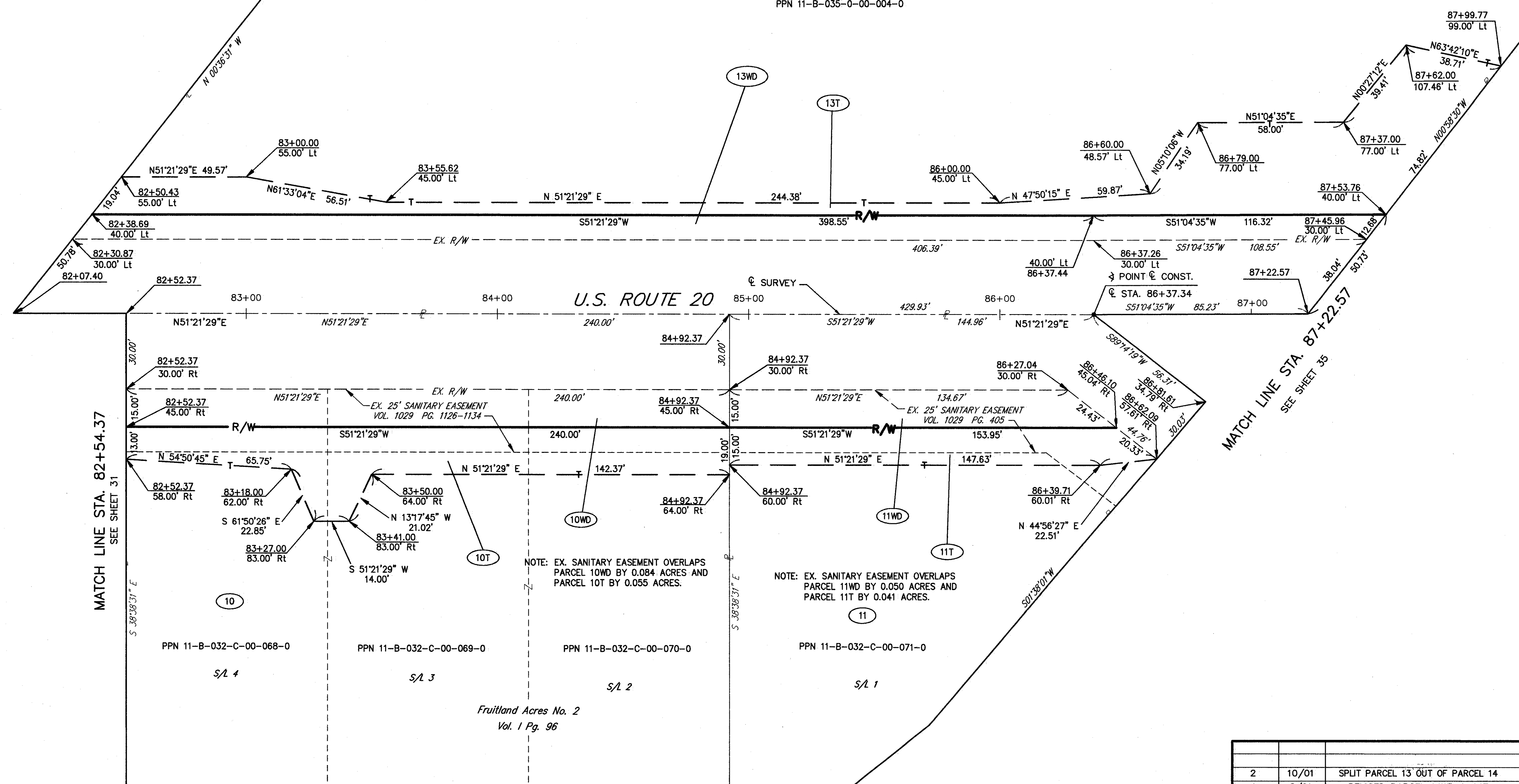


**PART OF LOT 7, TRACT 2
PART OF LOTS 5 THRU 13, TRACT 1
PAINESVILLE, TOWNSHIP
LAKE COUNTY, OHIO**



13
PPN 11-B-035-0-00-004-0



MATCH LINE STA. 82+54.37
SEE SHEET 31

MATCH LINE STA. 87+22.57
SEE SHEET 35

NOTE: EX. SANITARY EASEMENT OVERLAPS
PARCEL 10WD BY 0.084 ACRES AND
PARCEL 10T BY 0.055 ACRES.

NOTE: EX. SANITARY EASEMENT OVERLAPS
PARCEL 11WD BY 0.050 ACRES AND
PARCEL 11T BY 0.041 ACRES.

PPN 11-B-032-C-00-068-0

PPN 11-B-032-C-00-069-0

PPN 11-B-032-C-00-070-0

PPN 11-B-032-C-00-071-0

Fruitland Acres No. 2
Vol. 1 Pg. 96

FEDERAL
PROJECT NO.

PID NO.
20343

RIGHT OF WAY PLAN U.S. 20
STA. 82+54.20 TO STA. 87+22.57

LAK - 20 - 18.72

| | | |
|-----------------|-------|----------------------------------|
| 2 | 10/01 | SPLIT PARCEL 13 OUT OF PARCEL 14 |
| 1 | 8/01 | REVISED PARCEL 14WD & 14T |
| REV | DATE | DESCRIPTION |
| PLAN COMPLETED: | | |

33/87

387
441

H:\1998\98404\DWG\HRWSH4.DWG