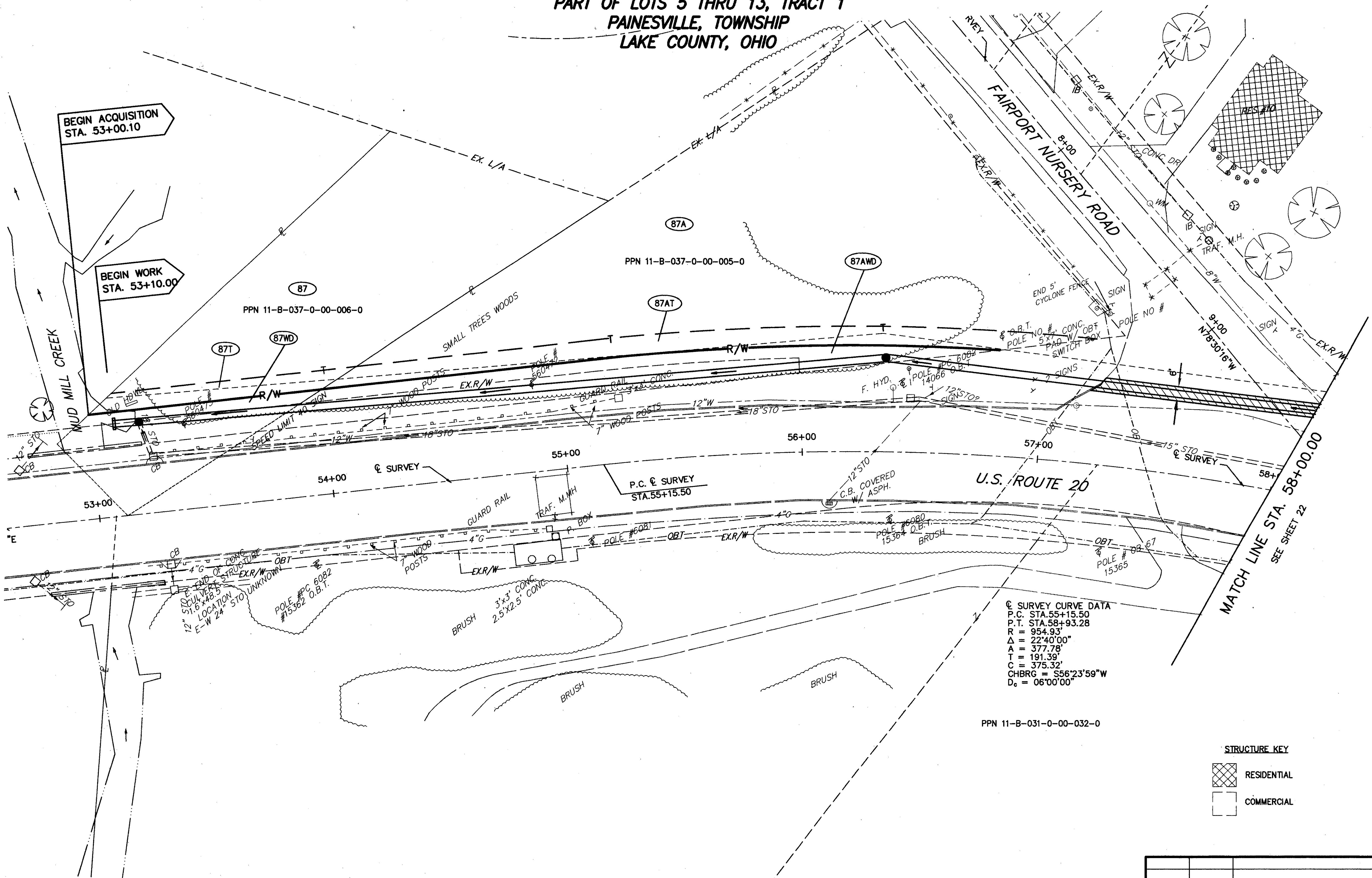
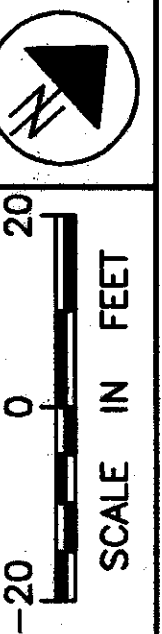


PART OF LOT 7, TRACT 2  
PART OF LOTS 5 THRU 13, TRACT 1  
PAINESVILLE, TOWNSHIP  
LAKE COUNTY, OHIO



BEGIN ACQUISITION  
STA. 53+00.10

BEGIN WORK  
STA. 53+10.00

PPN 11-B-037-0-00-006-0

PPN 11-B-037-0-00-005-0

☉ SURVEY CURVE DATA  
P.C. STA. 55+15.50  
P.T. STA. 58+93.28  
R = 954.93'  
Δ = 22°40'00"  
A = 377.78'  
T = 191.39'  
C = 375.32'  
CHBRG = S56°23'59"W  
D<sub>c</sub> = 06°00'00"

PPN 11-B-031-0-00-032-0

STRUCTURE KEY  
 RESIDENTIAL  
 COMMERCIAL

FEDERAL PROJECT NO.  
20343

RIGHT OF WAY PLAN U.S. 20  
STA. 53+00.10 TO STA. 58+00.00

LAK - 20 - 18.72

1	5/11/01	REVISED PARCEL 87 & ADDED PARCEL 87A
REV	DATE	DESCRIPTION
PLAN COMPLETED:		

20/87  
374  
441

H:\1998\98404\DWG\OUTPLAN3.DWG